



FIRE INSURANCE POLICY

DON'T DELAY ORDERING
 A fire insurance policy from us a single day. Fire isn't going to stay away because you are not insured. In fact, it seems to pick out the man foolish enough to be without.

MARK WHAT I SAY
O. C. TEEL,
Reliable Insurance.

Red Cloud School's Bi-monthly Spelling Contest.

No. taking part	lowest percent	high percent	average standing
Grade 7			
Boys 12	36	98	78
Girls 13	70	100	91
Grade 6			
Boys 16	60	94	78
Girls 20	46	98	81
Grade 5			
Boys 18	48	98	80
Girls 22	60	100	86
Grade 4			
Boys 17	62	100	81
Girls 24	68	100	88
Grade 3			
Boys 18	22	100	70
Girls 19	50	100	74

The following named children secured the highest in their respective grades:

Grade 7—Paul Polinsky, Atison Cowden, Laura Pierce, Blanche Boner, Bula Fitz.

Grade 6—Jackson Fincher, Ruth Husong, Hazel Wolf, Prun Huffer, Gladys Frey.

Grade 5—Kenneth Johnston, Ernest Newhouse, Faith Koontz.

Grade 4—Robert Blackledge, Merly Boner, Will McElrnie, Theima Lamborn, LaVaughn Moraville.

Grade 3—Ralph Newhouse, Katherine Trout, Mewie Edson, Clara Warren, Winnie Smith, Beatrice McAllister.

W. C. T. U. ITEMS.

(This Space Belongs to the W. C. T. U.)

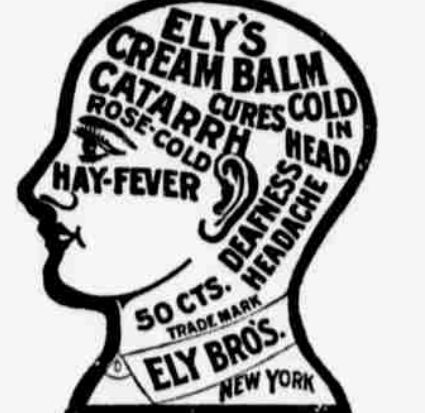
The experience of a Michigan common council justice "I hereby most respectfully tender my resignation of my commission as a Justice of the Peace to take effect on March 1st, '10. Cause: County prohibition, local option, no drinks, no vagrants, no disorderlies, no business to make the office desirable or in any way profitable."

When we can bring about such conditions we will have less officers, misery, crime, and expense with rooms to rent in our jails, poor houses, asylums and penitentiaries and we will be nearing that "happy me-jum" for which we are striving.

Keep your ribbon pinned on tight, it may give another cheer
 It may help another fear
 It may help another fight
 If your white ribbon is on tight.

There is a new and a young face at the door. Father Time has departed with the past year, a bright faced cherub has made his bow with 1910. As we take a retrospective glance—a long look back in the past record we see many things to ponder over. The liquor interests have got the best in the fight but with the rallying of the noble and persistent women we can see the advance guards of the foehaling to survey the situation. If the men will now rally to their support and stand by their convictions of right and good government we can overthrow the monster.

CATARRH



ELY'S CREAM BALM
 This Remedy is a Specific. Sure to Give Satisfaction. GIVES RELIEF AT ONCE

It cleanses, soothes, heals, and protects the diseased membrane. It cures Catarrh and drives away a Cold in the Head quickly. Restores the Senses of Taste and Smell. Easy to use. Contains no injurious drugs. Applied into the nostrils and absorbed. Large Size, 50 cents at Druggists or by mail; Trial Size, 10 cents by mail.

ELY BROTHERS, 156 Warren St., New York.

WANTED—A load of coils on subscription. Inquire of the Chief.

S. J. CUNNINGHAM
 DENTIST
 Successor to Dr. J. S. EMIGH

At the old stand over the State Bank. Phone 131.

A Few of the Good Things

- Dill Pickles.....15c per doz
 - Sour Pickles.....10c
 - Sweet Pickles.....10c
 - Bulk Olives.....10c
 - Horse Radish.....10c per bottle
 - Catsup.....10c
 - Celery Relish.....10c
 - Mustard.....10c
 - Oleomargarine Butter.....20 & 25c per lb
 - Oysters.....50 & 60c per qt
- YOST & BUTLER**
 The 4th Avenue Meat Market

Col. J. H. Ellinger
AUCTIONEER

Does livestock and general auctioneering. Satisfaction guaranteed in every case. Understands pedigrees and stock values. Many years experience. Phone him anytime.

Red Cloud, Nebr.

County Treasurer's Semi-Annual Statement.

Recapitulation, showing the amount on hand July 1, 1909, the collections since made, disbursements, and amount remaining on hand at the close of the 5th day of July, 1910, in each and all of the several Funds stated.

KIND OF FUNDS	Amount on hand July 1, 1909	Amount since collected	Interest collected	Funds Transferred from	TOTAL	Disbursements	Funds Transferred to	Amount now on hand	TOTAL
School and University Land	\$11,954.13		121.82		\$12,075.95	\$2,655.38		\$9,420.57	\$9,420.57
State Consolidated	11,559.91		331.94		11,891.85	2,566.24		9,325.61	9,325.61
County General	708.29				708.29	1,226.91		(518.62)	(518.62)
County Bridge	7,046.72				7,046.72	5,969.83		1,076.89	1,076.89
County Railroad Bond	258.69				258.69	3,415.96		(3,157.27)	(3,157.27)
County Soldiers Relief	291.63				291.63	429.9		(138.27)	(138.27)
County Fund						1,539.7		1,539.7	1,539.7
District Road	8,943.72				8,943.72	5,767.67		3,176.05	3,176.05
Commissioner of Highways	7,118.7				7,118.7	1,957.7		5,161.0	5,161.0
District Schools	2,871.94				2,871.94	3,045.6		(173.66)	(173.66)
State Appointments						282.08		282.08	282.08
Elms and Licensures						109.20		109.20	109.20
School Bond	6,093.55		1,916.79		8,010.34	8,219.25		(208.91)	(208.91)
Red Cloud City	39.01		1,472.78		1,511.79	1,511.89		(.10)	(.10)
Red Cloud Water Bond	1,619.38		148.40		1,767.78	2,057.78		(290.00)	(290.00)
Red Cloud Electric Light Bond	241.59		138.01		379.60	682.90		(303.30)	(303.30)
Red Cloud Electric Light Works	11.2		874.81		886.01	886.01			
Red Cloud Water Works	16.18		583.54		599.72	599.72			
Red Cloud Water Works Special	3.75				3.75				
Red Cloud Judgment	19.12		1,335.88		1,354.00	1,236.72		117.28	117.28
Red Cloud Sidewalk	2.73				2.73				
Blue Hill			956.63		956.63				
Blue Hill Water Bond	221.69		666.94		888.63	888.63			
Blue Hill Special	103.14				103.14				
Guide Rock	195.26		417.84		613.10				
Bladen	128.92		297.06		425.98				
Invasive Township Special			886.40		886.40				
Guide Rock Township Special			656.76		656.76				
Interest			36.70		36.70				
Advertising			278.37		278.37				
Redemption			461.43		461.43				
Miscellaneous									
	\$7,991.28	\$9,909.73	\$656.76		\$18,557.77	\$12,635.54		\$5,922.23	\$5,922.23

Fees and Commissions received from July 1st, 1909, to January 6th, 1910..... \$ 1529.54
 Railroad Bonds outstanding..... 17,500.00
 Interest collected on county funds..... 704.28

I, W. C. Frahm, County Treasurer, certify that the above is a true and correct statement of the outstanding indebtedness of the county and of all moneys received and disbursed by me as County Treasurer of Webster County, Nebraska, from the 1st day of July, 1909, to the 6th day of January, 1910, to the best of my knowledge and belief, as per statement submitted.

Subscribed and sworn to before me this 8th day of July, 1910.

[SEAL] E. W. ROSS, County Clerk.

G. A. SCHULTZ CO.

Are now located in the
Potter Building STAIRS UP
 We Write Insurance
 We Make Surety Bonds
 We Make Farm Loans
 We Sell Real Estate
 PIANOS

"We want your patronage"
 We make NO CHARGE for listing your property UNLESS WE SELL AT YOUR PRICE.
 WE ADVERTISE listed property WITHOUT A CENT OF EXPENSE TO YOU.
 Our new quarters are easy and comfortable. Come in and chat with us.

C. A. Schultz & Co
 Red Cloud, Neb.

Swift's Premium Hams or Bacons.



Fresh and Salt Meats of All Kinds
Wm. Koon
 Red Cloud, Nebr.

MARBLE & GRANITE MONUMENTS MADE BY

OVERING BROTHERS and CO., THE MONUMENT MEN,

Are durable, attractive and mechanically correct.

Red Cloud, Nebraska.

There's Only One Best

— and that's the GREAT MAJESTIC — they are the only ranges made exclusively of Malleable and Charcoal Iron — outlast three ordinary ranges — don't break, crack or rust. Malleable Iron allows absolutely airtight riveted joints in a MAJESTIC and these combined with pure asbestos lining, save half your fuel bill and give you a dependable cooker, a perfect baker — every day.

The MAJESTIC is equipped with a 15-gallon, all-copper reservoir — it touches the red hot fire and heats water in a jiffy.

The Great and Grand MAJESTIC Range
 Malleable and Charcoal Iron

has an oven door which when closed, forms a tight shaft strong enough to bear its weight — oven rack slides out automatically, holding anything this happens to be on it securely. Other attractive MAJESTIC features are the open end which can act as a shelf and the ash cup under it.

No mass or danger of fire from red hot ashes with a MAJESTIC. Each exclusive MAJESTIC feature makes this range more practical, more serviceable, more durable — the best range — your money can buy regardless of price.

SOLD BY
RED CLOUD Hdw. & Imp. Co

With water fronts if desired for pressure boiler
A Fuel Saver
Perfect Baker

It Should Be In Your Kitchen

Women Suffer Agonies from Diseased Kidneys
 And Most Women Do This Not Knowing the Real Cause of their Condition

These poor, suffering women have been led to believe that their misery of mind and body is entirely due to "ills of their sex." Usually the kidneys and bladder are responsible — or largely so. And in such cases, the kidneys and bladder are the organs, that need and must have attention.

Those torturing, enervating sick headaches, dragging pains in back, groin and limbs, bloating and swelling of the extremities, listlessness, nervousness or hysteria, listlessness and constant tired, worn-out feeling — are almost certain symptoms of disordered and diseased kidneys, bladder and liver.

DeWitt's Kidney and Bladder Pills have, in thousands of cases, been demonstrated as remarkably beneficial in all such conditions of female organism — affording the most prompt relief and permanent benefit.

As an illustration of what these Pills will do, Mrs. P. M. Bray of Columbus, Ga., writes that she was very ill with kidney trouble, and that she is now well — and that these Pills are what cured her.

They are very pleasant to take, and can in no case, produce any deleterious effects upon the system — as syrupy, alcoholic, liquid preparations are apt to do.

E. C. DeWitt & Co., Chicago, Ill., want every man and woman who have the least suspicion that they are afflicted with kidney and bladder diseases to at once write them, and a trial box of these Pills will be sent free by return mail post-paid. Do it today.

FOR SALE BY ALL DRUGGISTS



LAND! LAND!! LAND!!! LAND!!!!

I have a few remarks to make to prospective buyers, home-seekers, speculators etc. I spent several days driving over the land in four different Counties in Western Kansas, in counties where I have been told they have the best and cheapest lands, especially good for Wheat and Alfalfa. I have some well improved and some unimproved places which can be bought on easy terms.

I also have some very fine bargains in Western Nebraska, especially in the Champion Valley and also some in Eastern Colorado. Any one desiring to go and look these places over will please call on A. H. CARPENTER and he will either go with you or will send a good man with you who can show you where the best bargains are to be found. Also have some excellent trading propositions.

I have farms listed from all these places and will show you some very fine bargains for the money. These are all new bargains which I have just got lined up for the year 1910. For further particulars call on

A. H. CARPENTER, THE LAND MAN.

Market Report

- As Furnished by Hanson & Trine
- Hens (fat).....8 per lb.
 - Springs.....8
 - Cox.....3
 - Ducks.....6
 - Geese.....5
 - Butter.....21
 - Eggs (rots out).....27

Land Bargain.

610 acres sq. sec. 3-10-31 Lincoln Co., Neb. Price \$8 per acre. This is A 1, grass, corn, alfalfa, potatoe and beet land. Inquire of Editor of this paper.

Widow's Pension.
 The recent act of April 10th, 1908 gives to all soldiers' widows a pension of \$12 per month. Fred Maurer, the attorney, has all necessary blanks.