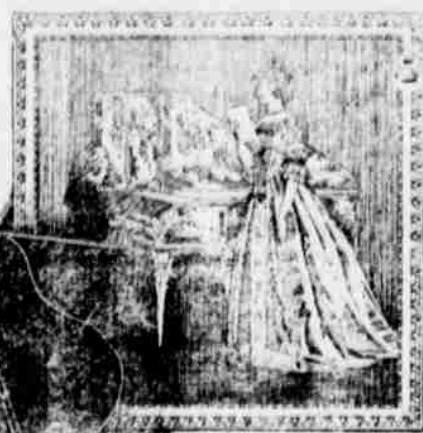
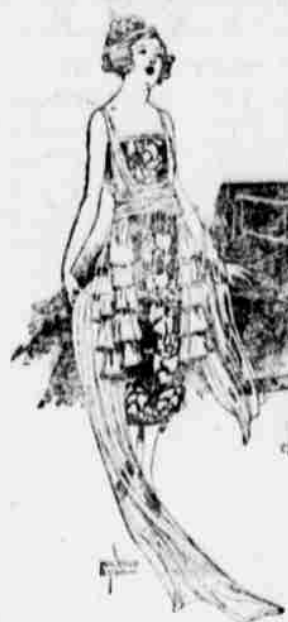


Golden Voiced Pianos!



Again, and again, we hear the tone of our instruments eulogized

SPECIAL INTRODUCTORY SALE

To Introduce the Baldwin Line of Pianos and Player Pianos We Are Making Special Prices on These Instruments

THE PRUDENT BUYER OF A PIANO WILL ASK FIRST OF ALL—"WHY SHOULD I BUY THIS PARTICULAR INSTRUMENT?" RIGHTLY SO—THE PURCHASE OF A PIANO MEANS TO MOST FAMILIES THE ACQUIRING OF A LIFE LONG COMPANION.

ALL PIANOS BEARING THE BALDWIN NAME PLATE ARE MADE IN THEIR ENTIRETY IN THE BALDWIN FACTORIES AT CINCINNATI OR CHICAGO. QUALITY IS NEVER SACRIFICED TO PRICE. THE NAME BALDWIN ON A PIANO HAS BEEN A MARK OF DISTINCTIVE QUALITY SINCE 1862.

WE CONSIDER OURSELVES FORTUNATE IN BEING ABLE TO OFFER MERCHANDISE OF SUCH EXCEPTIONAL QUALITY TO OUR PATRONS. WITH THE CO-OPERATION OF THE "HOUSE OF BALDWIN" WE ARE ABLE TO MAKE THE FOLLOWING EXTRAORDINARY INTRODUCTORY PRICES YOU MAY HAVE SPECIAL EASY TERMS IF YOU WISH.

The Baldwin "Modello" Player

The Modello is the Player Piano you have been looking for. In it you have an instrument of genuine merit at such a price and of such a value as to vanquish competition.

The Modello is a Player Piano of which any family would be proud. Its simplicity of lines is in accord with modern taste and its mechanism of the latest type. As a musical instrument it is without peer. It emphasizes our policy to give quality and value to the fullest extent.

In the Modello you have an investment that will pay you daily dividends in pleasure, education and entertainment. An investment whose returns will be enjoyed alike by your family and your friends, yet will leave you all the richer for sharing them.

The Modello is unit in conception and construction. Its technique is un-failing and gives the player pianist absolute control over all the essentials of playing such as Tempo, Rhythm, Accent and Expression. Its ease of operation is remarkable.

Regular Chicago Price Without Bench, \$750.00
Special Red Cloud Price With Bench - - \$435.00

OUR GUARANTEE

"We buy certain merchandise because we believe the goods are reliable—because we believe it is what our customers need because we believe it represents full value for every dollar paid for it.

On this belief, we base our guarantee of satisfaction to you. If what you buy is not satisfactory, it is because we made a mistake and we stand ready to rectify our mistake by "making good" to you. This is our policy on everything sold here."

Come in, get a free copy of "The Tunes That Dad Whistled" and "Songs Of Long Ago."

A REAL BARGAIN

I have one slightly used "New Edison." This instrument was sold on installments. The purchaser finds himself unable to complete the payments. We'll sell this for the balance due either cash or deferred payments.

The Hamilton Baldwin Piano

The Hamilton (Baldwin) Pianos are good pianos, not by chance but as a result of most careful planning, years of study and scientific experiment on broad and sound lines.

All essential parts of these instruments are made in our factory under one supervision assuring unfailing uniformity and excellence. More than 100,000 Hamilton pianos are now in use and their owners delight in their praise. All Hamilton pianos are protected by a ten year factory guarantee.

Regular Factory Price \$625.00—Sale Price \$335.00

THE HOWARD BALDWIN PIANO

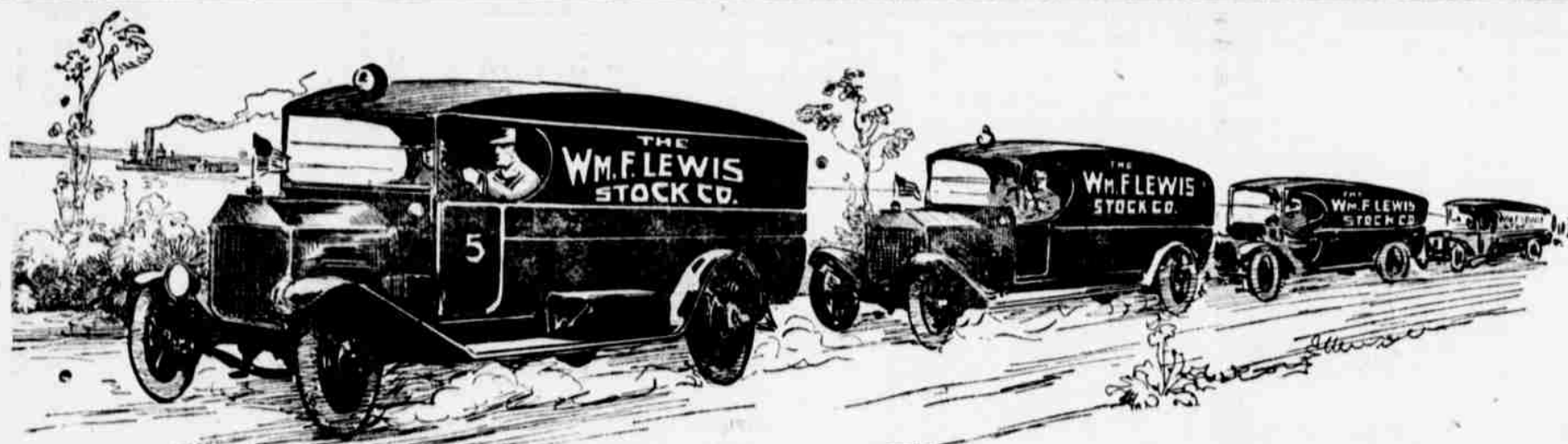
A durable, well built piano is always a piano of good tone—quality. Good tone quality is impossible without reliable construction. In a well built piano the tone will improve with usage—but it should be good from the beginning.

Selecting a piano carefully, inspecting it thoroughly, insisting upon one that suits you, is not a waste of time nor effort.

The Howard (Baldwin made) meets the requirements of all those who want an instrument of fine and lasting tone quality, in a handsome, durably constructed case at an attractive price. Every Howard factory guaranteed for seven years.

REGULAR FACTORY PRICE \$500.00—SALE PRICE \$305.00

REDCLOUD **E. H. NEWHOUSE** NEBRASKA



PART OF THE Wm. F. LEWIS STOCK COMPANY'S MOTOR TRUCK TRAIN EN-ROUTE TO RED CLOUD

Yes, Garber's Is The Place!

To Buy Wall Paper, Paints, And Electrical Supplies. The best place for Picture Framing.

The Margin of Safety

Is represented by the amount of insurance you carry.

Don't lull yourself into a fancied security.

Because fire has never touched you it doesn't follow that you're immune tomorrow—no today, if you have time—and you better find time—come to the office and we'll write a policy on your house, furniture, store or merchandise.

—LATER MAY BE TOO LATE—

O. C. TEEL
Reliable Insurance

THE HUGHES WAY
Cleaners-Dyers-Tailors
WE CLEAN HATS

The Missouri Philosopher.
An optimist can always see the bright side of the other fellow's misfortune.—Jameson Gem.

The Cave Man.
Mrs. Wetherbee decided where they should live, what kind of furniture they should buy, what plays they should see and where the seats were to be; chose names and schools for the children and the friends of the family, planned their recreations, selected Mr. Wetherbee's suits and neckties and spent all the money.

Once the cave-man spirit flared up in Mr. Wetherbee, and only once. "But listen, dear—" he said. "Then the flame of the cave-man spirit burned out.—Life.

Probably Obsolete.
"Just what is meant by 'senatorial courtesy'?"

"To the best of my knowledge and belief," replied Mr. Grumpson, "after reading the light returns from Washington, it doesn't mean anything."—Birmingham Age-Herald.

Steam Turbine Not Modern Invention.
Experiments with a steam engine invention were being made 150 years before the Christian era by an old Greek experimenter of Alexandria. He had an apprentice named Hero. Hero constructed the first steam turbine engine which was of the reactionary type, but for all that it would spin like a top. He also invented a steam whistle and a pneumatic blower by which he could sound trumpets and organ pipes in a way that mystified his public. Hero also made temple doors open and close mysteriously by use of compressed air and pistons. He made a fountain which is still a philosophic toy known by his name. He made the first machines to be put in operation by inserting a coin in a slot and a "dioptric or spying tube" which was the forerunner of modern spy glass and opera glass.

ROMANCE OF WORDS

"PECUNIARY"

IF, AFTER being promised a "pecuniary reward" for the performance of a certain service, a person were to receive a sheep, he would probably feel that he had been deceived or that the one who had made the promise had gone back on his word. But, in its primary meaning, "pecuniary" means "relating to sheep," being taken verbatim from the Latin pecunia which, in turn, is derived from pecus, sheep.

The transformation grew out of the custom of the Romans of measuring a man's wealth by the number of sheep which grazed over his pastures. A "man of many sheep" was the equivalent of a wealthy citizen, for sheep were valuable not only for their wool but also as an article of diet. Gradually, the root-word pecus was lengthened to pecunia, the equivalent of "money" or "worldly possessions," and its pastoral origin was almost completely obscured when transplanted into English. Should a restaurant, therefore, advertise a "pecuniary stew" it would not necessarily mean that dollar bills and gold pieces appear in the dish, but it would merely be an etymologically allowable synonym for the old standby, "mutton stew."

(© by the Wheeler Syndicate, Inc.)

All Races in France.

Our nation (France) is compounded of many stocks. Great migrations, coming from the East and North and marching toward the Southwest, have left their successive traces in our blood. We know only the later of these migrant stocks, among whom the chief were the Celts and the Germans.

Their predecessors of still remoter date are unenumerated and unknown. On the other hand, our southern and northern coasts have attracted settlement from beyond the seas. The Mediterranean brought to our shores the Phoenicians, the Carthaginians, the Greeks, the Latins, and, last of all, the Arabs; Great Britain sent her Bretons to our Armorica; and Scandinavia peopled with Normans the lower valley of the Seine.

So France has become, so to speak, an ethnographical synthesis of Europe. The blood of all civilized mankind courses through our veins.—From "L'Histoire de France Contemporaine," by Ernest Lavisse. Extract Reprinted in La Revue de Paris.

Triumphed Over Disabilities.

Blind and armless an ex-soldier was brought to trial for driving an automobile in London. The evidence proved that he drove frequently through the crowded streets, with his chauffeur at his side, responding to nudges as signals when to stop and when the road was clear. He has had a pair of artificial arms since being maimed in the war, but manipulates them with the facility of ordinary persons. He testified that he could write, typewrite, dress and undress, tell time by his watch and drive a car as safely as anybody. The judge was so fascinated by his story of conquering blindness that he called him a "superman" and discharged him on condition that he would not drive again.

COAL

We Sell

**Niggerhead Maitland
And
Routt County Lump**

We sell for cash that's why we sell cheaper.

FARMERS ELEVATOR

Blankets and Robes

Call and see our line of new Robes and Blankets

LEE WALKER

Successor to J. O. Butler

A Financial Rainbow

A SAVING ACCOUNT is a most welcome rainbow to the financial storms of your life. After the clouds have rolled by and you find your Savings still there, the future will look ever so much brighter and cheerful. And you will be glad that you started an account.

Why not get busy to-day? Take a few dollars and start an Account with this bank. And with a little added each week plus the interest we contribute, you will soon have a sum to allay all fears of any financial storm in the future.

If not already a depositor open an account today.

THE WEBSTER COUNTY BANK

Edward Florence, President Red Cloud, Neb. S. R. Florence, Cashier

Capital and Surplus \$35,000.00

Deposits Guaranteed by the Depositors Guaranty Fund of the State of Nebraska