



A Newspaper That Gives The News Fifty-two Weeks Each Year For \$1.50

VOLUME 49

RED CLOUD, NEBRASKA, NOVEMBER 3, 1921

NUMBER 14.

## Photographs

Do You Need Any This Fall?

Now is a good time to get them as we are making a

**Special Price of \$6.00 and \$7.00**

A DOZEN—FOR A SHORT TIME ONLY.

See The Styles in The Street Case

**THE GLEASON STUDIO**  
Red Cloud

## Good Values

CERTAINLY you want the lowest price on all your purchases. We are going to give you this help when making your purchases at our store.

Remember our store the next time your wants are in our line.

We are after your business.

**J. C. MITCHELL**  
The Jeweler Grafanolas and Records

## To Our Patrons And Friends

Mr. J. F. Edwards has resigned his position with the Farmers' Union to accept a position at Riverton and Mr. Will McPherson, who has been connected with the Union for the past two years, will assume his duties at the store.

Carl McArthur has accepted a position as second man at the Elevator and G. A. Kailey will handle the clerical work for both the store and elevator, with headquarters at the store.

**The Farmers Union**  
RED CLOUD, NEBR.

### Will Celebrate at Inavale

On Friday evening the local American Legion Post held a meeting at which time they decided to go to Inavale to celebrate Armistice Day as they have received an invitation from the wide-awake merchants of that town. They expect to have a big barbecue and all the "fixings" to go with it. A good time is anticipated.

### Fifth Red Cross Roll Call

The Fifth annual Roll Call of the American Red Cross for membership will begin Nov. 11 and continue until Nov. 24th.

The Webster County Chapter has \$1874.22 on hand altho it is using considerable money each year for different kinds of relief work. So far as funds are concerned you can readily see that there is no pressing need for them and yet there must be a Red Cross organization that we may hold our chapter together and retain money for use in our own immediate vicinity.

You will not be solicited but it is advisable that as many as are interested should renew their membership at this time. Annual membership \$1; Contributing \$5.00; Sustaining \$10. All except fifty cents for each of these memberships is retained by the local chapter for relief work permitted by the American Red Cross. Detailed information as to the work being done will be cheerfully given. Memberships can be obtained at the office of the secretary. E. J. Overing J., Secretary.

### COUNCIL SAYS PUT ON AN EXTRA POLICEMAN

Mayoress Mary Peterson called the Council together in regular session, with all members present, in the Council Chambers on Tuesday evening and after the minutes of the October meetings were read and approved the report of City Treasurer S. R. Florance was presented and ordered placed on file.

Superintendent B. R. Frazier of the light and power department reported the wells at the power house as being full of oil, and at the rate, now being used, the supply should run about five months.

On motion of Alderman Sherwood the Council voted that the Mayoress be instructed to secure the services of an extra policeman for the winter months. Also on motion of Alderman Sherwood the Council voted that city treasurer be instructed to transfer sufficient funds from the Electric Light Cash Fund to Electric Light Levy Fund under Ordinance No. 61, to take up two warrants and interest on the Grand Island Loan and Trust Co.

Following claims were allowed:  
B. R. Frazier \$150.00  
W. A. Patten 125.00  
C. D. Whitaker 85.00  
Bert Perry 75.00  
S. R. Florance 552.54  
O. C. Teel 53.46  
I. Boyle 75.00  
C. R. Lewis 85.00  
Frank Clawson 7.25  
L. Simpson 15.00  
Malone-Gellatly 10.40  
A. B. McArthur 3.20  
Smith & McKimney 4.80  
Sam Mountford 54.17  
Nat'l Refining Co. 159.60  
Johnson Oil Ref. Co. 194.01  
Mutual Oil Co. 290.50  
Midwest Elec. Co. 47.67

### Grace Church Services

24th Sunday After Trinity  
Sunday School at 10 a. m.  
Holy Communion with special Missionary Sermon by Rev. J. M. Bates at 1 a. m.  
Confirmation Instruction at 4 p. m.  
Evening Service at 7:30 p. m.  
If you dont worship elsewhere, come and worship with us.

Mrs. Ed. Gilbert went to Chappell Monday to visit her daughter who is very sick.

### Booster's Lunch

On Monday next Nov. 7th the Boosters Lunch will be held in the Royal Hotel. Give your name to Messers J. C. Mitchell, Ed Garber or Dave Kaley and reserve your place

### Community Christmas Tree

A number of persons in Red Cloud have expressed a desire for a Community Christmas Tree. This is a splendid spirit and in line with other united efforts to make the world brighter and better. If you are interested come to the mass meeting to be held in the basement of the Public Library next Tuesday evening at 7:30 o'clock.

### Commissioners Give \$1000 to Our Farmers Institute

Red Cloud, Nebraska, November 1, 1921.

The County Board of Commissioners met as per adjournment at 1 o'clock p. m. with all members present.

A committee consisting of E. J. Overing, J. W. Auld, Henry Gilham, C. B. Steward and Jas. S. Gilham officers and members of the Red Cloud Farmers' Institute appeared before the Board and through their spokesman, Jas. S. Gilham, asked that the 1921 levy made for aid to County Agricultural Societies be divided equally between Bladen Fair Association and the Red Cloud Farmers' Institute.

They also filed the proper certificates as provided by law showing they had complied with all the requirements of the law entitling them to share in this appropriation equally with Bladen Fair Association

A motion was made by Crowell seconded by Shidler that this appropriation be divided equally between the above mentioned societies and County Clerk instructed to draw a warrant on the General Fund for \$1000.00 to Bladen Fair Association and \$1000.00 to Red Cloud Farmers' Institute. Motion carried.

The application of Jesse Brooks for admission to the Soldiers' Home at Burkett was approved by Board.

The following claims were audited and allowed and County Clerk was instructed to draw warrants on the proper funds in payment of same:

#### GENERAL FUND

W. D. Edson \$ 99.85  
Omaha Printing Co. 31.76  
University Pub. Co. 6.14  
H. Ludlow 5.20  
O. J. Kailey 24.00  
Anna B. Spanogle 41.66  
Henry R. Fausch 239.20  
Anna Stumphendorst 60.00  
Frank Starr 68.86  
Robert Damerell 8.00  
F. E. Maurer 3.00  
J. A. Denton 4.00  
Nelson Bartlett 4.00  
Wm. E. Wallace 4.00  
T. J. Chaplin 56.49  
Grant Shidler 125.00  
H. H. Crowell 45.00  
H. A. Stumphendorst 67.85  
Clara McMillan 62.22  
Chicago Lbr. Co. 14.20  
W. H. Rpsocore 60.00  
State Journal Co. 57.55  
Red Cloud Chief 12.50  
Kiops Printing Co. 215.00  
C. A. Wadd 81.80

#### BRIDGE FUND

H. G. Fols 32.50  
C. R. Fakeson 6.50  
A. O. Mefford 56.00  
Agnes J. Dyer 29.50  
Barn Hopper 25.10  
Wm. Tomlin 100.00  
Gen Wilson 15.00  
H. E. Hersh 131.90  
G. A. Wells 18.98  
John Himmelberg 45.00  
Frank Worman 107.00

#### POOR FARM FUND

Standard Oil Co. 4.45  
Edgar McIntosh 15.00  
Board adjourned to December 13, 1921.

B. F. PERRY, County Clerk

## Alarm Clocks

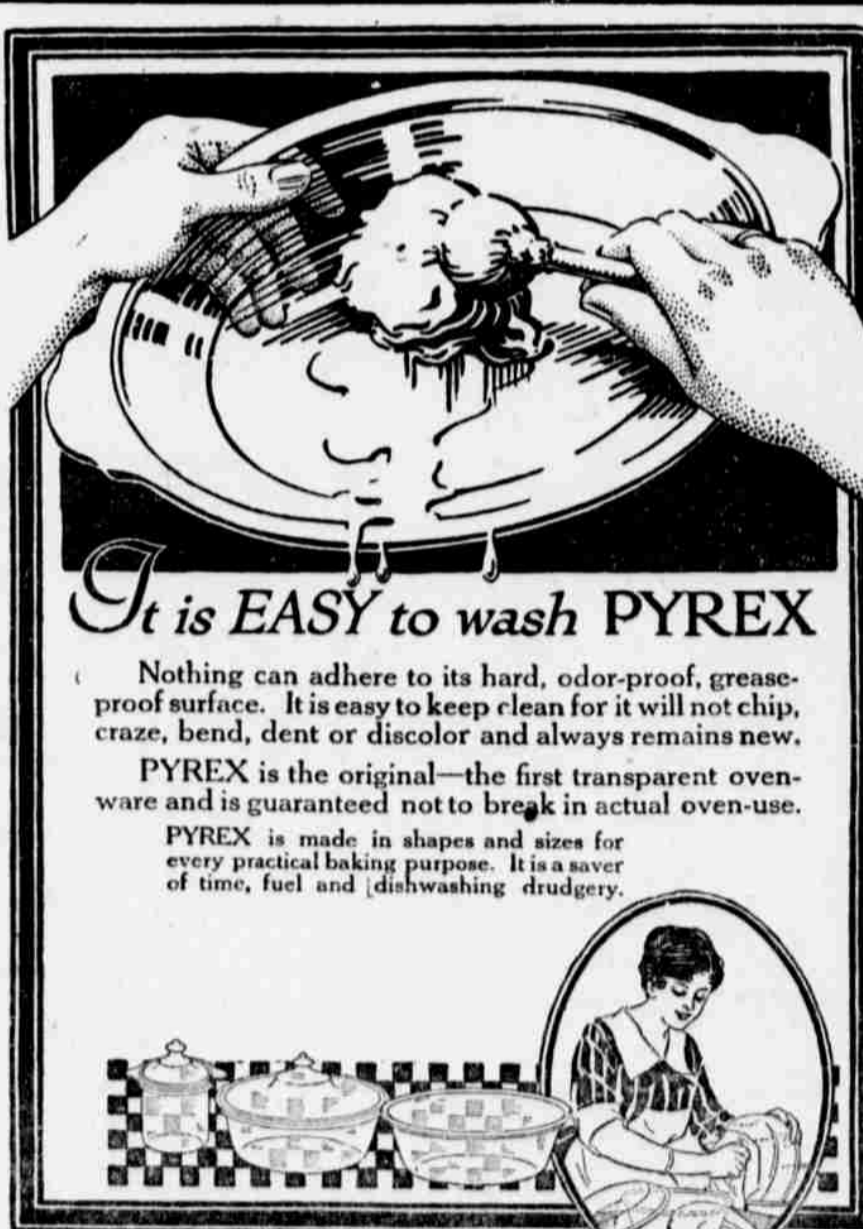
A new stock of Westclox Alarms

BIG BENS  
SLEEPMETERS  
BABY BENS  
AMERICAS

We Make 'Quality' Right--Then the Price Right

**E. H. Newhouse**

Red Cloud Jeweler and Optometrist Nebraska



It is EASY to wash PYREX

Nothing can adhere to its hard, odor-proof, grease-proof surface. It is easy to keep clean for it will not chip, craze, bend, dent or discolor and always remains new.

PYREX is the original—the first transparent ovenware and is guaranteed not to break in actual oven-use.

PYREX is made in shapes and sizes for every practical baking purpose. It is a saver of time, fuel and dishwashing drudgery.

**TRINE'S HARDWARE**

## GENERAL CONTRACTOR

We do building from the excavating to the painting complete. We will figure your jobs to furnish all materials, or otherwise, to suit our customers. We do FRAME BRICK and STUCCO work. Let us show you the difference between good and inferior stucco.

**GRANT CHRISTY**