

## In The Eye

Ever stop to think how strongly you are influenced by the look in a man's eye? Your eyes are the most observed feature. Why not give them the consideration they deserve, and select becoming eye glasses? Our glasses make your eyes look best, and are best for your eyes.

**J. C. MITCHELL**  
JEWELER AND OPTICIAN

## New Voile Dresses



### Nifty New Voile Dresses

In both light and dark back grounds. Prices range from **\$4.75 to \$9.75**

In sizes from 16 years to 48 inch bust.

Also a new lot of gingham dresses and aprons.

**Barbara Phares**  
The Women's Store  
Red Cloud - - - - Nebraska

## Thank You



We have endeavored to put this garment into first class condition as you requested us to do. If not entirely satisfied PLEASE give us an opportunity to rectify to your entire satisfaction.

LET US MAKE YOUR NEXT SUIT OR COAT

This is our guarantee with every order

**THE HUGHES WAY**  
FOR CLOTHES TROUBLES  
**The Frank R. Hughes Co.**  
CLEANING DYEING REPAIRING  
LADIE'S TAILORS MEN'S TAILORS  
BOTH PHONES WE Call and Deliver

### THE RED CLOUD CHIEF

Red Cloud, Nebraska  
PUBLISHED EVERY THURSDAY  
Entered in the Postoffice at Red Cloud, Neb as Second Class Matter  
A. B. MCARTHUR, Editor and Owner

#### Advertising Rates

Foreign, per column inch 15c  
Local, " " " 10 & 12 1/2

#### Farm Bureau Notes

**FARMER'S INSTITUTE**  
The Board of Directors of the Webster County Farmer's Institute met and selected October 25th to 28th as dates for this year's Institute. The Executive committee was authorized to name committees. The first named on the Committee is to be Chairman or Superintendent of that department.

The Executive Committee was urged to select these committees as soon as possible and everyone can start planning for the biggest Institute ever held.

Two departments, Farm Products and Dairy Cattle have been lacking the past year and every effort will be put forth to try and bring them back to normal. Now is the time to get busy on the farm products.

Committees named were as follows:

Program—E. J. Overing, County Agent Henry R. Fausch, Superintendent of Red Cloud Schools, Mr. Gelwick, Mrs. Frank Hughes, and J. E. Btz.

Finance—Dr. Damerell, Geo. Coon and William Carbill.

Buildings and Advertising—Henry Gilham, C. G. Starke, C. J. Platt.

Parade—F. W. Cowden, County Superintendent Estella Ducker, R. P. Weesner.

Horses—Farnk Starr, Thomas Swartz and Henry Johnson.

Cattle—C. B. Steward, Alf Nolan and Wm. Starke.

Hogs—C. W. Johnston, Len Wilcox and George Amack.

Sheep—H. H. Crowell

Junior Work—County Agent Fausch

Poultry—J. O. Butler, Dan Garber and Henry Lambrecht.

Farm Products—Frank Frisbie, Ben Pegg and Chas. Gurney, Sr.

Fruit—J. M. Bates.

HENRY R. FAUSCH,

#### County Agricultural Agent. STATE FARM BUREAU NOTES

Atlanta, Georgia was selected as the meeting place for the annual convention of the American Farm Bureau Federation to be held November 22-25 inclusive. The selection was made at a meeting of the executive committee in Chicago last week. This will be the largest agricultural convention ever held. More than a score of foreign agricultural societies have signified their intention to send delegates.

Fred M. Dewese, head of the legal department of the Nebraska Farm Bureau Federation appeared before the state railway commission in opposition to the application of the Northwestern Bell Telephone Company for continuance of its 10 percent surcharge and for increased toll rates in which it was joined by the Lincoln Telephone Company in so far as increased toll rates were concerned. Many other persons representing nearly all portions of the state also attended and expressed opposition to increased rates being granted to public service corporations at this time, when the prices of farm produce are at the lowest level in many years.

At the meeting of the Mid-West Farm Bureau Federation presidents and secretaries held in Chicago last week in connection with the meeting of the American Farm Bureau executive committee, the Farm Bureau from mine-to-consumer co-operative coal marketing plan was tentatively agreed upon. It was plainly stated that the plan is not to be a commercial enterprise, but merely a service agency, serving not only farm bureau members but all individuals. Orders will be placed by individuals through their county farm bureau. The county farm bureau will pool the orders through the purchasing agent of the office or allied organization. The orders for each state will be turned over to the purchasing agent, who will seek the grade of coal desired at the most favorable rate as regards location, the coal to be delivered through the local co-operative elevator, the local dealer, or county farm bureau. The farmer is to pay for his coal upon arrival at his local distributing point.

Partial returns have been received by the Nebraska Farm Bureau Federation from twenty-one Nebraska counties giving replies to the American Farm Bureau questionnaire on sixteen national questions as follows:  
No. 1-Do you favor commodity financing based on bonded warehouse receipts? Yes-2002 No-110  
No. 2-Do you favor livestock financing based on an adequate pledge

of animals and feed? Yes-2609 No-90.

No. 3-Do you favor the development of a personal rural credits system based on proper safeguards? Yes-2686 No-88.

No. 4-That authority be granted the Federal Reserve Board to so classify rediscounts as to give priority to loans for basis production of all kinds? Yes-2609 No-137.

No. 5-Increasing limit federal land mortgages from \$10,000 to \$25,000. Yes-2195 No-394.

No. 6-Asking Congress to submit federal constitutional amendment prohibiting tax-free securities. Yes-2900 No-11.

No. 7-Continuance of excess profit tax. Yes-2915 No-137.

No. 8-Are you opposed to general sales taxes? Yes-2985 No-79.

No. 9-Will you be able to move greater quantity of farm products if freight adequately reduces? Yes-3126 No-34.

No. 10-For the building of farm-to-market before construction of transcontinental highways. Yes-3001 No-56.

No. 11-For Great Lakes-St. Lawrence waterways. Yes-2750 No-176.

No. 12-Do you favor other waterway development for transportation reclamation, and water power at this time? Yes-2366 No-340.

No. 13-Placing packers under government regulation to be administered by department of agriculture. Yes-2721 No-221.

No. 14-For making illegal "short selling" in agricultural products. Yes-3088 No-52.

No. 15-For "truth-in-fabric" legislation. Yes-3228 No-7.

No. 16-Legislation for enabling co-operative marketing. Yes-3158 No-7.

The Gage county fair this year is to be managed by the county farm bureau with county extension agent Boyd Rist in charge of the arrangements. The program has already been arranged which gives promise of making it a most successful exposition of the industry of the county.

Secretary of the Interior Fall: "One never stops learning till he draws his last breath."

#### Speeds Up Car Repairs

Determined that every grain and coal carrying car shall be in ship shape so that the road can render 100 percent service when the crops begin to move and the public commences to buy coal. E. P. Bracken, Vice President in charge of operation of the Burlington Road, advises that effective July 1, his line will employ 1500 car repairers.

Did it Seem That Long?  
Santa Cruz News—"She was sixty-nine years of age and she had been married for more than a century."—Boston Transcript.

## Here's why CAMELS are the quality cigarette



BECAUSE we put the utmost quality into this one brand. Camels are as good as it's possible for skill, money and lifelong knowledge of fine tobaccos to make a cigarette.

Nothing is too good for Camels. And bear this in mind! Everything is done to make Camels the best cigarette it's possible to buy. Nothing is done simply for show.

Take the Camel package for instance. It's the most perfect packing science can devise to protect cigarettes and keep them fresh. Heavy paper—secure foil wrapping—revenue stamp to seal the fold and make the package air-tight. But there's nothing flashy about it. You'll find no extra wrappers. No frills or furbelows.

Such things do not improve the smoke any more than premiums or coupons. And remember—you must pay their extra cost or get lowered quality.

If you want the smoothest, mellowest, mildest cigarette you can imagine—and one entirely free from cigarettey aftertaste,

It's Camels for you.

# Camel

R. J. REYNOLDS TOBACCO COMPANY, Winston-Salem, N. C.

## Three Things You Want

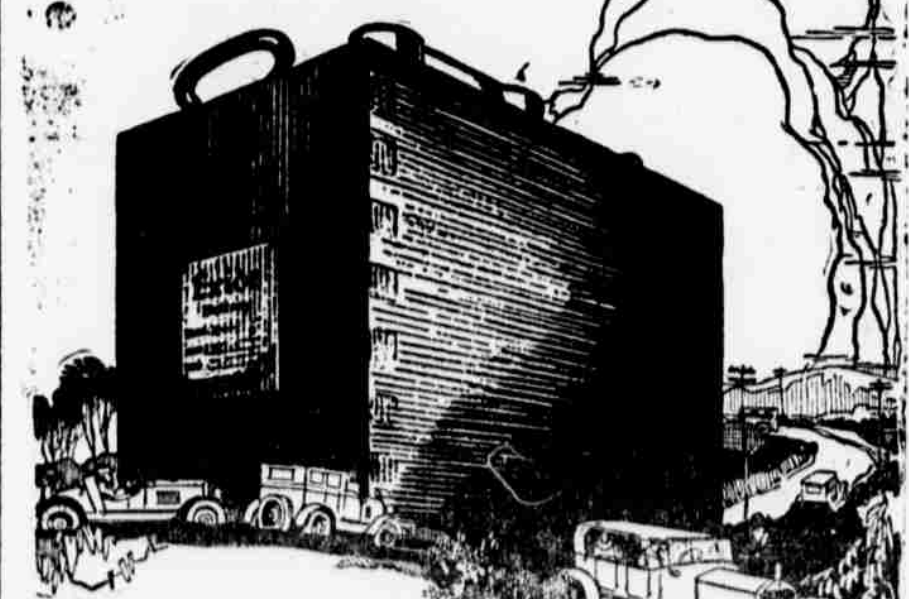
The three things that count in a battery, Exide gives in the maximum degree. These are:

- 1—Plenty of power—and then some.
- 2—Long life.
- 3—Freedom from repairs.



To make sure that the Exide gives this service, ask any motorist who uses one. To see why, call and dissect an Exide Battery with us.

Red Cloud Battery Service Station  
CARL S. MCARTHUR, Mgr.



# Exide

BATTERIES

## JUST RECEIVED

A line of new FLY NETS, FLY COVERS, AUTO COVERS, and DUSTERS.

Priced at a low margin of profit

Fogel Bldg. **J. & BUTLER** Red Cloud Nebraska