

**THE RED CLOUD CHIEF**  
Red Cloud, Nebraska.

PUBLISHED EVERY THURSDAY

Entered in the Postoffice at Red Cloud, Neb. as Second Class Matter

A. B. McARTHUR, Editor and Owner

**GEORGE EMERSON SHUTE BURIED ON FRIDAY**

George Emerson Shute was born at Plymouth, New Hampshire, April 2, 1852 and departed this life December 13, 1920, at the age of 68 years, 8 months and 11 days.

On May 17, 1883 he was united in marriage to Miss Laura A. Still of Burlington, Iowa. To this union were born eight children, six daughters and two sons, one son dying in infancy.

The deceased was one of the early settlers of Jewell County, Kansas, coming here in 1876. Since that time he has lived continuously on the home

farm with the exception of five years—1876 to 1881—spent in Burlington, Iowa.

Besides the widow, those left to mourn his death are Mrs. W. C. Creider of Colorado Springs, Colorado; Miss Grace L. Shute of Washington, D. C.; Mrs. Carl P. Hedge of Inavale, Nebraska; Miss Carrie Shute of Portland, Oregon; Mrs. Wm. T. Boren of Red Cloud, Nebraska; Miss Estelle Shute of Washington, D. C.; Mr. Ralph T. Shute, who is still at home; seven grandchildren and two brothers.

Funeral services were held at the Highland church at 2 p. m. December 17, and interment made in the Highland cemetery.—Monday's Commercial Advertiser.

**The Original Hearse.**

A hearse originally was a metal grating or spike fence with upright spikes for the reception of candles for illumination or the hanging of decorative draperies around a tomb or at a gateway.

**NEBRASKA FARMERS PLANT LESS WHEAT**

In spite of the very favorable autumn season for the seeding of winter wheat, the acreage is reduced 2 per cent over last year according to the preliminary estimate just announced by A. E. Anderson of the Bureau of Crop Estimates and Leo Stuhr of the Nebraska Department of Agriculture. This gives the state a total of 3,301,000 acres as compared to 3,368,000 acres sown a year ago. The harvested acreages were 3,716,000 acres in 1919, 3,335,000 acres in 1920. The 1921 harvested acreage depends upon the percentage of the planted acreage that survives the winter. These figures show a tendency on the part of the farmers to reduce the winter wheat acreage so as to limit the supply to the demand.

The condition of winter wheat is 90 per cent as compared to 91 per cent a year ago and 89.8 per cent the five year average. The condition remains very poor in some of the western counties due to lack of moisture. Heavy autumn winds did some damage throughout the state and were threatening serious damage until relieved by moisture.

The preliminary estimate of rye totals 278,000 acres as compared to 264,000 acres sown a year ago. Rye acreage made a steady increase from 63,000 acres in 1909 to 408,000 acres in 1919, and then dropped to 264,000 acres in 1920. The condition of rye is 90 per cent as compared to 93 per cent a year ago.

An estimate of the average yield per acre of straw has been made for the first time. The yields are as follows: wheat straw, 1.1 tons; oats, 1.1 tons; rye, 1.3 tons; barley, 1.1 tons; flax, 1 ton.

The average farm labor wages for 1920 when hired by the year were \$66 per month with board. This is an increase of \$9.26 per month over last year. The extreme range in wages in the different counties varied from \$58 to \$86 per month. The average daily wage for harvest labor was \$5.90 with board as compared to \$5.25 with board last year. The average wage per day for farm labor other than harvest work was \$3.90 as compared to \$3.85 last year with board. It is evident, therefore, that the present crop was the most expensive ever produced by Nebraska farmers.

Estimates for the United States are as follows: Winter wheat acreage 97.2 per cent of that sown a year ago or a total of 40,605,000 acres, and a condition of 87.9 per cent compared to 85.2 per cent a year ago. Rye acreage, 88.6 per cent of a year ago, totaling 4,653,000 acres, and a condition of 90.5 per cent against 89.8 per cent last December.

**STATE SANITARY ENGINEER PASSES ON OUR WATER**

The following letter received by City Superintendent B. R. Frazier is in itself explanatory and is well worth a careful perusal:

BUREAU OF HEALTH  
Lincoln, Nebraska  
December 16, 1920.

Mr. B. R. Frazier,  
Red Cloud, Nebraska.

Dear Sir:  
I am sending you herewith the result of the analysis of the samples of water you collected December 7th and which were examined the 10th.

Sample number 2045 taken from a tap at 4th Ave. and Elm St. shows bacteria 415 per c. c. and B. Coli negative in all portions tested.

Sample number 2046 taken from the municipal well shows bacteria 90 per c. c. and B. Coli positive in one out of five 10 c. c. portions tested.

Sample number 2047 taken from the tap at 3rd Ave. and Cedar St. shows bacteria 675 per c. c. and B. Coli positive in two out of five 10 c. c. portions tested.

The average of these results would indicate water of safe drinking quality as it only shows B. Coli positive in but one out of five 10 c. c. portions which compares with the government standard on purity. The total count is high on two samples but this is not given much weight as we are interested in giving the interpretation on just the B. Coli.

Care should be taken in watching your water supply for sometime in the future so that if anything does show up it can be remedied.

Yours respectfully,  
BEN HUNTINGTON,  
Sanitary Engineer.

**THE YOUTH'S COMPANION HOME CALENDAR FOR 1921**

The Publishers of The Youth's Companion will, as always at this season, present to every subscriber whose subscription (\$2.50) is paid for 1921 a Calendar for the new year. The tablets are printed in red and olive green, and besides giving the days of the current month in bold legible type, give the Calendar of the preceding and succeeding month in smaller type in the margin. It is a rich and practical piece of work.

**ORPHEUM RED CLOUD NEBRASKA**

Thursday, December 23

LARRY SEMON in

"THE FLY COP"

Also GLADYS LESLIE in

GREY TOWERS MYSTERY

Friday, December 24

ALLAN DAWN PRODUCTION.

IN THE HEART OF A FOOL

Also 5th Episode of THE PHANTOM FOE

Saturday, December 25

DOUGLAS McLEAN and DORRIS MAY in

23½ HOURS LATE

Remember Them in Mary's Ankle

Also A BIG V COMEDY

Sunday, December 26

CHAS. RAY in

RED HOT DOLLARS

Monday-Tuesday, December 27-28

Courage of Marge O'Doone

By James Oliver Curwood

USUAL PRICES

Mr. and Mrs.

**ED. AMACK**  
UNDERTAKING

BOTH PHONES

RED CLOUD, NEB

Wishing You A Merry Christmas and A Happy New Year

**FRANK R. HUGHES & CO.**  
CLEANING DYEING REPAIRING

Phones—Red 88—193 M Red Cloud, Nebraska  
We Call and Deliver We Pay Return Charges on Out-of-Town Work

**Christmas Display**

We're showing a beautiful line of Manicure and Toilet Sets, Leather Goods, Dolls and Games. Our usual large stock of Books of all kinds. CALL and SEE.

**Chas. L. Gotting The Druggist**

WISHING YOU A  
**MERRY CHRISTMAS**  
AND A  
**HAPPY NEW YEAR**

*We thank you for your liberal patronage during the past year and we will endeavor to merit a continuance of the same in the future.*

**Gaston MUSIC CO**



**Dr. R. E. CAMP**

CHIROPRACTOR

PHONES } Office 76-M  
IND. } Residence 190-Y

Office 2 Blocks North of Fireman's Hall

RED CLOUD NEBRASKA

**Dr. W.H. McBride**

DENTIST

OVER STATE BANK

Red Cloud

**Dr. R.V. Nicholson**

DENTIST

Office Over Albright's Store

Red Cloud

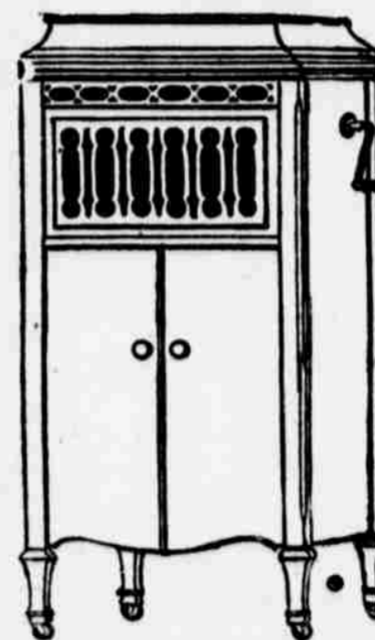
Nebraska

THE  
**PATHE**  
PHONOGRAPH




**The Christmas Gift for All the Family**

No matter who gets it, all the family can enjoy it all of the time. It is THE ONE CHRISTMAS PRESENT that spreads the CHRISTMAS SPIRIT over all the year, till Christmas comes again.



Here's your chance to get a Genuine Pathe Phonograph and \$25 worth of Genuine Pathe Records for the regular price of the Phonograph alone. In other words, you get

**\$25.00** Worth of **FREE** Records

Come in today, pick out any cabinet Model PATHE Phonograph and we'll deliver it, with the \$25 worth of records, any time you say—now, or the day before Xmas.

For all the Family—Father and mother, Sister and Baby and Little Brother Let's get them a jeweled Pathe—'Twill make a whole year a big Xmas day

Rexall Store **GRICE & GRIMES** Red Cloud

Pathe Phonographs | Exclusive Pathe Agents | Pathe Records

The Pathe Phonograph Plays All Makes of Records