

# School Clothes

School is now in session and the school children need sturdy clothes. Have a nice line of the following goods that are priced right.

What is more serviceable for a school dress than a good gingham, well made for wear—and the styles are right.

If you are in need of a good sweater come in and look my line over before buying—Always ready and willing to show goods.

## BARBARA PHARES

### A Few of My Bargains in KANSAS WHEAT LAND

640 acres. 4 1/2 miles from good town, good grass, 15 feet to water, for quick sale \$12.50 per acre will carry back \$4000 at 6 percent.

640 acres. 8 miles from town all in grass, 250 acres bottom land all can be farmed but about 40 acres, close to school, good neighborhood, and surrounded with good improvements, 50 feet to water, \$20 per acre will carry back \$5600 at 6 percent.

480 acres, with improvements, 8 miles from good town. 50 feet to water, 80 acres under cultivation, adjoins school, a bargain at \$25 per acre, \$1800 back at 6 percent.

160 acres 3 1/4 miles from town, level as a floor, good grass, \$30 per acre, \$1000 back.

320 acres 9 1/4 miles from town, 40 acres in wheat, 1/4 delivered, 160 acres more broke which could be put in barley in spring, every foot can be cultivated, priced at \$30 per acre, \$4000 back at 6 percent.

100 acres fine level quarter except about 30 acres, 150 in cultivation, 100 acres in wheat 1/2 of wheat at machine goes with the place at \$40 per acre, \$2000 back at 7 percent.

320 acres, 300 tillable, 200 acres under cultivation, 120 in pasture, 7 room house, barn, granary, well and mill, leased for 1921, for one third delivered, 5 miles from town on graded road, a bargain at \$40 per acre, \$4000 back at 6 percent.

900 acres, 7 miles from town, finest improved farm in county, 100 acres good alfalfa land, pumping plant irrigating 40 acres, good spring in pasture, 280 acres seeded to wheat goes with the place for \$20 per acre, terms at 6 per cent.

160 acres 13 miles from town, all in grass, level, good soil, this goes for \$24 per acre.

If you are interested in any of the above come in and see me and set a date to go down and look it over. I make the trip in auto and about three days is all that is required to make the trip and look the land over to your satisfaction. I believe I am giving you good advice when I tell you to act quick for land is sure to advance, as parties in northwestern part of Kansas are selling their land there and coming in here to buy.

**Geo. W. Hutchison**  
Real Estate, Insurance, Loans, Abstracts

PHONES Office, Red 33. Ind. 63  
Residence, 177 Red Cloud Nebraska

# Land Sale!

The South West Quarter of Section Thirteen (13) Township One (1) Range Eleven (11) Webster County, known as the Gust Ryden land, will be sold at public auction to the highest bidder on Saturday, October 23, at 10:30 a. m. This sale will take place in front of the State Bank. The purchaser will be required to pay \$1,000 at the time of sale and balance on delivery of deed. The undersigned reserves the right to reject any and all bids. This property belongs to the heirs of Gust Ryden, and the undersigned has power of attorney to sell it.

**P. A. EDQUIST**

Bernard McNeny VICE CONSUL OF SWEDEN  
Attorney FOR NEBRASKA

**Dr. W.H. McBride** **Dr. R.V. Nicholson**

DENTIST

DENTIST

OVER STATE BANK

Office Over Alibghra Store

RED CLOUD

NEBRASKA

Red Cloud

Nebraska

## THE RED CLOUD CHIEF

Red Cloud, Nebraska

PUBLISHED EVERY THURSDAY

Entered in the Postoffice at Red Cloud, Neb. as Second Class Matter

A. B. McARTHUR, Editor and Owner

THE ONLY DEMOCRATIC PAPER IN WEBSTER COUNTY

Edith L. McKeighan for Clerk of District Court

Edith L. McKeighan, Clerk of the District Court, who is a candidate for re-election on the Democratic ticket this fall, has during her incumbency of office carried out the duties faithfully and efficiently. She has conducted the office in such a manner that it has not been necessary for the county to pay out money for extra help.

Economy has been second only to efficiency. The work of our courts require experience and ability. Miss McKeighan possesses the ability and necessary knowledge and is in every way qualified to fill the office satisfactorily to the public.

Alfred McCall for State Senator

Alfred McCall, our nominee for state Senator needs no introduction to the people of Webster county. He has lived among us for over forty years.

He knows the needs of this part of Nebraska. He is a practical farmer and knows all about the farmer's problems.

Mr. McCall is not a politician but a good clean man and we should elect him.

Vote for McCall and you will be voting for the right man.

N. V. Anderson for Representative

Vic Anderson is a real farmer. He has worked and got his start in this county.

He knows what is needed in Webster county. He has been a democrat some time and will not desert the cause.

Send Anderson to the legislature and you will send a man that will represent you without fear or favor.

Mr. Anderson is too busy to make an active canvass but be sure and put the X after his name.

Henry Wright for Commissioner

Mr. Wright needs no introduction to most of the people of the county. He is a merchant and farmer of Rosemount.

His neighbors call him "Honest Henry". This is the sort of man that the county needs in this office.

He has never held county office and should be elected by a large majority. He will give consideration to all parts of the county. Vote for Henry.

James Hubatka for Commissioner

James Hubatka is a candidate for re-election. His record is an open book. He is for economy. He is a large and prosperous farmer. Just the man for the place.

This office has always sought him. The voters know that a man of the sort as Hubatka is the right man in the right place. It would be a mistake, Mr.

Vote not to re-elect Mr. Hubatka. He is the water dog of our public food. Three of the commissioners now in office are Republicans, don't you think that it is a good idea to have some democrats on the board? Therefore vote for Hubatka, Wright and Gurney.

Chas. E. Gurney for Commissioner

Charles E. Gurney is our candidate for commissioner from the 4th district. He is an old settler of the county and a good citizen and business man. Mr. Gurney entered the race because his friends urged him to do so. Elect Gurney and you will do much to protect your own interests.

For County Assessor

Seth Greene from Bladen is the Democratic nominee for county assessor. Mr. Greene has been local assessor from Bladen and knows the values of property in the county. He is the right man to elect county assessor. His experience will be to the taxpayer's advantage.

WEBSTER COUNTY DEMOCRATIC CENTRAL COMMITTEE

SEED CORN SELECTION

Fall selection of seed corn is the best method, but not generally practiced by farmers. If you can't go out and select seed early in the fall, the next best method is at husking time, by putting a box on the wagon. Selecting seed corn by the above methods has two advantages. First, it insures a supply of seed for next year and second, by going into the field you can select ears from vigorous stalks, ears that husk easily and are the right height on the stalk. After the corn is picked it should be properly stored for the drying. We have a sample of a corn rack at the office, that some of the farmers are using and they would not do without them.

POULTRY CULLING

Many inquiries are coming in for poultry culling. We will try to handle this work during November. Those wanting their poultry culled, please let us know and we will make out our schedule and notify you. It is very important that you pick out the on-laying hens and put them on the market.

HOG SALES

Webster county Breeders of Poland Chinas and Durocs are trying out for the first time, Combination Sales.

The Poland China Breeders will sell on Saturday, November 6, at Red Cloud, 27 boars and 16 open gilts.

The Duroc Jersey Breeders will sell on Saturday, November 20, at Red Cloud, 30 boars and 23 open gilts.

These offerings are nicely grown out, not overloaded with fat. This will be a good opportunity for farmers to buy their herd boar and some good gilts for breeding purposes.

Remember the dates and attend the sales.

HENRY R. FAUSCH,  
County Agricultural Agent.

Lutheran Church

Sunday School at 10 A. M.  
Confessional Service at 10:30.  
Regular Service at 11 o'clock.  
Rev. O. Heinitz, Pastor.

# SALE

Of

## High Sensation DUROCS

To be held at the farm 12 miles northeast of Superior, and 8 miles southeast of Nelson and 2 miles southwest of Nora, Nebraska on,

### FRIDAY, OCT. 29th

Sale Starts 1 o'clock. Free Dinner at Noon

Offering Consists of 40 Head Immuned

1 Jr. yearling Boar, 1 Senior yearling Boar, 2 Fall Boars, 21 Spring Boars, 2 Jr. yearling Gilts and 13 Spring Gilts

### Announcement to Our Brother Farmers and Breeders

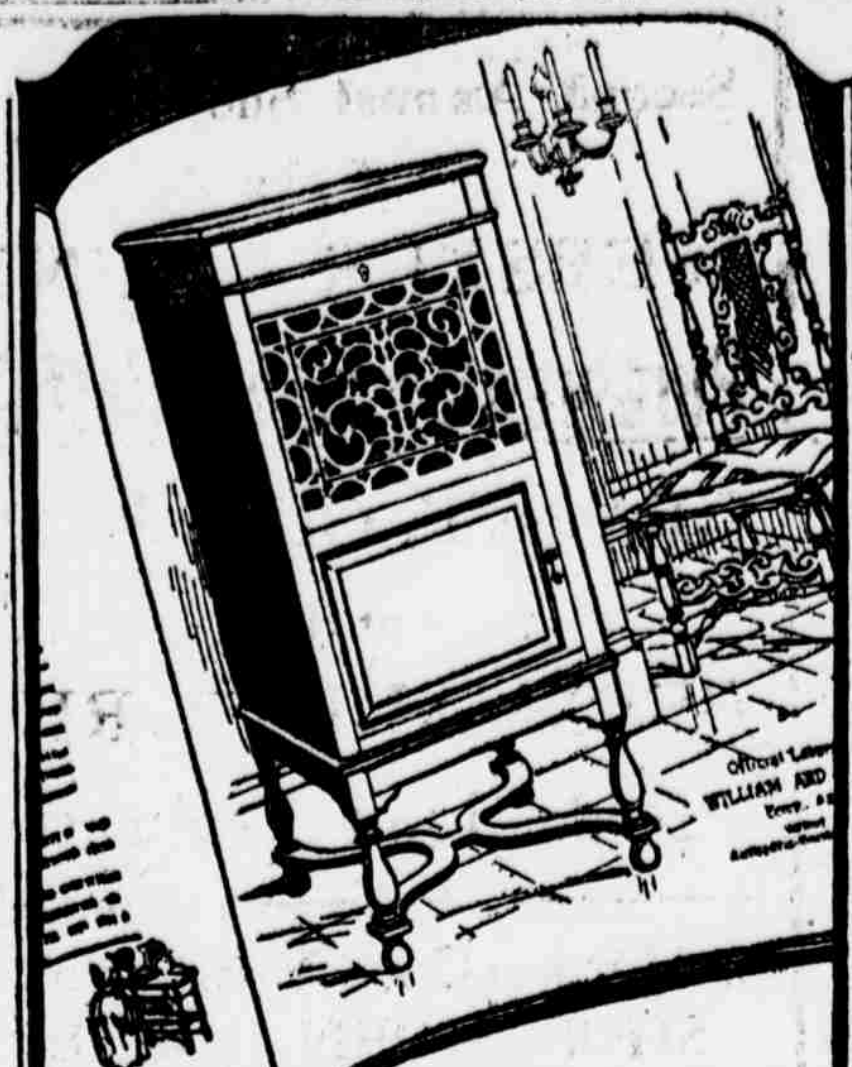
This offering has been grown out for breeding purposes and will not be fattened, but I think I am safe in saying that they are as growthy and in as nice a healthy condition as any you can find any where this fall. Our Durocs have made good in our customers hands the last year. In almost every instance a man that bought a boar in our last fall sale will tell you he has the best bunch of pigs this year that he ever owned. Now this is more than just a happy so. The breeding is back of them and High Sensation is a real sire of the right kind. We have them grown out and the best are always the cheapest. Nothing does us any more good than to look around over the country and see the improvement in different herds where boars or sows of our breeding have been used.

Write for our Catalogue

TERMS: Cash, or any arrangement you make with clerk

**CARL DAY, Owner**

A. W. Thompson & C. A. Landreth, Auctioneers. J. Yung, Clerk



aren't you coming in to get your copy of Edison and Music? It's Free

## Page after page of exquisite period cabinets

On each page, the same fascinating story.

And this is it:

Every Edison cabinet has been adapted direct from some Old World furniture masterpiece. Every Edison cabinet looks every inch the thing that it is—a true furniture aristocrat.

### The NEW EDISON

"The Photograph with a Soul"

So—stop in today. Get your copy of "Edison and Music" It tells you, in picture and story, all about the 17 Edison period cabinets—their looks, their lineage, their characteristics.

The kind of book that makes useful information a joy to obtain. A guide to the kind of furniture that has given modern times its most precious heirlooms.

Ask us, at the same time, about our Budget Plan—the thrift way of buying a New Edison.

E. H. NEWHOUSE Authorized Dealer Red Cloud, Nebraska

# School Days

Are again at hand and with them come the usual cares and worries for mother—hustling to get the kiddies off to school each morning. Sometimes in the haste other household duties are forgotten, preparations for the noonday meal forgotten. But don't let that worry you—phone us your wants or have the "kids" stop in and give us your order and it will receive the same careful attention as if you had personally made the purchase.

GIVE US AN OPPORTUNITY TO SERVE YOU IF YOU DESIRE QUALITY AND SERVICE

**P. A. Wullbrandt**

Groceries and Queensware

FOOT BALL GAMES, 3:30 p. m.

Friday, 22nd; RED CLOUD vs. BURR OAK

Thursday, 28th; RED CLOUD vs. BEAVER CITY

Attend These Games and Help The Boys!