



A Newspaper That Gives The News Fifty-two Weeks Each Year For \$20

VOLUME 48

RED CLOUD, NEBRASKA, JUNE 24, 1920

NUMBER 23

Ted Lewis Makes a Date in Cuba



Come in and hear the latest fox-trots by Ted Lewis' Jazz Band. "I'll See You in C-U-B-A," with melodious incidental whistling by Ted Lewis himself, and "The Moon Shines on the Moonshine" by these same exclusive Columbia artists, are a pure delight to dance to.

A-2927—\$1.00

Other Good Records

J. C. MITCHELL

The Jeweler

Columbia Phonographs

Columbia Records

The Big Three—

Quality In order to measure up to the demands of the buying public of today any piece of merchandise must give satisfaction in every way. If it does not it is stricken from the list of desirable merchandise. The goods we handle possess this **QUALITY**

Service The service we tender our patrons, even to the 'kiddies' is known to all. Our aim at all times, is to give you wants very prompt and careful attention.

Price The price is figured as low as it is possible to make it—when you consider that our merchandise is the best the market affords. You are protected not only by our years of successful grocery experience, but also by our guarantee of your satisfaction.

P. A. Wullbrandt

Groceries and Queensware

RESULTS COUNT

and we have the knowledge the equipment and the desire to produce **RESULTS**.

Let Us Prove It

Over Smith's
Shoe Store

The Gleason Studio

Will Play Two Teams Sunday

Sunday afternoon the Republican City ball team came to Red Cloud and played a very interesting game here, the result being a score of 5 to 1 in favor of the home boys. The line up of the local team has been changed and it seems to have produced the desired results, as last Sunday's game was one that came up to standard.

Sunday afternoon of this week a big double header will be played here on the local grounds. Inavale will be the first team to oppose the locals, game called at 2 o'clock. The second game will start at 3:30 at which time Cora, Kansas will play the home team. Judging from reports of the class of ball that these two teams have been playing the base ball fans will receive their money's worth Sunday.

1370 Dogs in the County

County Assessor C. A. Herrick kindly furnished us the following information which may prove interesting to our readers. The records show that on April 1, 1920, that Webster county had 1086 head of mules, 10,816 head of horses, 23,141 head of cattle, 15,148 head of hogs, 604 head of sheep, 290 stands of bees, 86,477 bushels of wheat, 271,942 bushels of corn, 6,545 bushels of oats, 4,825 bushels of barley, 10,645 dozen chickens and 1370 dogs. The total actual valuation of personal property is \$72,67,945 showing an increase of \$491,900 over last year. The actual value of real estate is \$21,031,545. In 1916 it was figured at \$16,773,110. The real estate valuation of Red Cloud City was raised \$16,005 over that of four years ago. This increase in valuation is due to the erection of the Besse Auditorium.

COUNCIL PROCEEDINGS

Mayor Amack called the Council together in regular adjourned session in the Council Chambers on Wednesday evening, with all members present.

Mr. Fulton presented his report and final estimate on paving in District No. 3, after which Council voted that the estimate and claim of Watts Construction Co. for \$40,486.88 and Grant, Fulton & Letton for \$1,839.77 be allowed.

On motion of Alderman Sherwood, the Clerk was instructed to publish in the Argus, a notice to property owners of a special meeting of the City Council to be held on July 17, 1920, for the purpose of assessing the cost of paving in Districts No. 2 and 3 to the property benefitted.

The final claims of Grant, Fulton & Letton for \$105.52 and Watts Construction Co. for \$105.50 were allowed.

UNITED CHRISTIAN CHURCH

A business meeting of the membership and all interested will be held at the Christian church at 8 p. m. Wednesday, June 30th. The matter of securing a pastor for the ensuing year will be discussed as well as other matters pertaining to the future action of the United movement.

COMMITTEE

According to the Wednesday Omaha World Herald, Harry A. Williams, of Omaha, and Mrs. Sadie A. Tomlinson of this city were granted a marriage license.

Mr. and Mrs. Chas. Dickerson and daughter, Mrs. Ralph Shepardson left Monday afternoon, via automobile, for Parsons, Kansas, where they will visit their daughter and sister. They will also visit in Oklahoma and Arkansas before returning home.

Dave Bell, B. E. Eshelman, Bert Ducker, W. H. Thomas, Will Rosenkrans and E. S. Fitz returned home Wednesday from Eldorado, Kansas, where they had been investigating the Boyer oil lease and they are well pleased with the prospects.

BOARD OF EQUALIZATION

Red Cloud, Nebr. June 15-1920
This being the date fixed by law, the County Board of Equalization convened at 10 o'clock a. m., with all members present.

Meeting called to order by County Clerk.

Motion made by Waldo, seconded by Knigge, that W. H. Thomas act as chairman of Board of Equalization for the year 1920. Motion carried.

Mathias Massinger appeared before the Board and complained that his improvements were assessed too high on lots 6-7 and 8 in the N. W. ¼ section 10-1-9. Motion made and carried that the assessment remain the same as fixed by the Precinct Assessor.

The next complaint was that of Porter Hale who appeared before the Board and complained that his land lots 3 and 4, W ½ of S. E. Section 11-1-10 was assessed too high. After comparison by the Board of adjoining land motion was made and carried that said land be reduced to \$50 per acre.

Wm. McCallum next appeared before the Board and complained of his assessment being too high on the W ½ of Section 23-1-11. After the Board had investigated the assessment as made on lands in the same vicinity a motion was made by the Precinct Assessor for 1920 on above land be not changed.

Board adjourned to meet at 10 a. m., June 16, 1920.

June 16, 1920

Board convened at 10 o'clock a. m. with all members present.

Mrs. E. J. Ducker appeared before the Board and complained that her improvements on Blk 8 Red Cloud Annex were assessed too high. After investigation of this property by the Board the same was reduced from \$1500 to \$1400 actual value.

Fred Maurer next appeared before the Board and stated that he considered his improvements on lots 1 to 3, Blk 7 Le-Duc add to Red Cloud were assessed too high. Motion made and carried that no change be made on above assessment.

H. A. Stumpenhorst appeared before the Board and complained that his improvements on the N. W. ¼ of Section 36-4-11 were assessed too high. Motion made and carried that the assessment on above remain the same as turned in by Precinct Assessor.

Board adjourned to 10 a. m. June 17, 1920

June 17, 1920

Board convened at 10 a. m. with all members present.

Henry R. Fausch appeared before the Board and claimed his improvements on the N. E. ¼ of Section 2-1-9 were assessed too high. Motion made and carried that the same be reduced from \$2500 to \$1500 actual value.

No other complaints coming before the Board they now took up the matter of equalizing the real estate between the different precincts of the county. After a careful comparison of all the precincts as shown by the summaries prepared by County Assessor Herrick a motion was made by Waldo and carried that assessments as turned in by Precinct Assessor in Inavale precinct be reduced 10 per cent on both land improvements also the same reduction on lots and improvements in the village of Inavale.

Motion made by Knigge and seconded by Waldo that Oak Creek precinct be reduced 15 per cent on the land only. Motion carried.

No other business appearing before the Board they adjourned to call of the County Clerk.

B. F. PERRY, County Clerk

TO OUR MEMBERS AND PATRONS

Owing to the 4th of July falling on Sunday our store and elevator will be closed all day Monday, July 5th.

FARMERS' UNION

Give Our Jewelry

Recount your own treasures that your heart holds dear---a Watch, a Pin, a Ring---and you will give lasting presents to those of whom you are fond.

JEWELRY is the thing to give

Our store is the place to buy it, because you can absolutely depend upon the Quality, Style and price of any piece you buy from us.

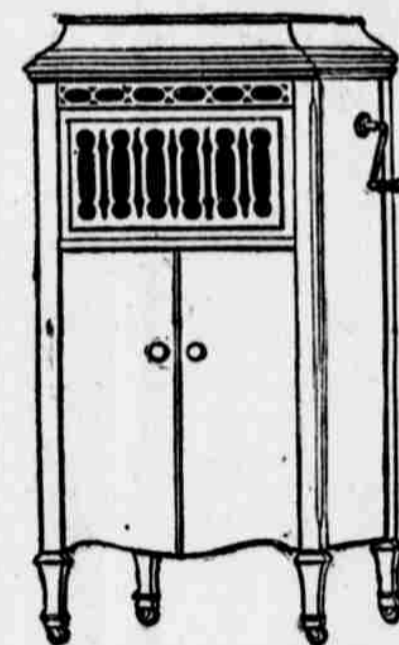
Your Satisfaction or
Your Money Back!

E. H. Newhouse

Red Cloud

Jeweler and Optician

Nebraska



Pathe Phonographs

Conceived in Paris decades ago and delicately perfected as time went on, Pathe music has long enjoyed the approval of our musically fastidious allies.

Ears that would be distraught by the blair of the "talking machines" have welcomed the jeweled music of Pathe.

It is the romantic belief of poets that in their encirclings through space the stars made musical their passage. The "music of the spheres" may be on a grander scale but it is not more bewitching than the music of that tiny sapphire ball which glides around its appointed orbit on a Pathe Record.

In contemplating the more sophisticated mechanism of Pathe one should remember that there are two ways of considering recorded music. One is that it is a sort of science. The other that it is Art.

The pseudo-scientist uses points, needles, which rip sound out of the record. The Artist is gentler; he uses a perfectly rounded sapphire which by mere touch releases music. Music must be wooed, not gouged; and we know that this matter may be safely left to the verdict of your ears once you hear Pathe



HEAR THE PATHE AT

Red Cloud **GRICE & GRIMES** Nebraska
PATHE PHONOGRAPHS — AND PATHE RECORDS

The Price of Lumber

and building material is so much less than it has been and the prospects for it going much lower is so slight that we feel justified in advising you to build now

PLATT & FREES