

AS TOLD TO US

Buy your Groceries of Miner Bros. Co. Come to Red Cloud and do your trading.

Cecil Essig spent Saturday in Hastings.

W. V. Real was in Hastings, Saturday.

Mrs. Lloyd Perry went to Omaha, Sunday.

Horace Brown spent Saturday in Hastings.

B. J. Kincaid spent Wednesday in Blue Hill.

Mrs. F. H. Cassil spent Wednesday in Hastings.

Bert Leonard was down from Inavale, Wednesday.

B. L. Castor returned from Franklin, Saturday.

Roy Sattley, undertaker—auto hears in connection.

Sam Saunders was down from Inavale, Saturday.

H. E. Baird spent Saturday in Manhattan, Kansas.

Almo Clutter returned home Wednesday from Denver.

Mrs. N. R. Simpson spent Saturday in Republican City.

John Crans spent Friday with friends in Hastings.

County Attorney F. J. Munday was in Inavale, Saturday.

P. A. Britton of Dresden, Kansas, spent Thursday in the city.

Fred Temple of Kansas City was in the city the last of the week.

E. C. Person and H. H. Hutchison of Franklin spent Friday in the city.

Misses Blanche Barker and Elta Douglas spent Sunday in Inavale.

Mrs. Al Slaby and son, Fred, returned home Sunday from Denver.

Mrs. Jas. McGuire and daughter, Miss Rose, spent Friday in Hastings.

Miss Louise Schumacher spent the weekend with her parents at Orleans.

Mr. and Mrs. Frank Starr spent Friday with relatives at Lebanon, Kansas.

The Nebraska Press Association will hold a meeting at Lincoln, Saturday.

Ed Cray and Howard Hamilton of Guide Rock were in the city, Thursday.

Ashley Worthen and Ivan Blankenbaker were down from Inavale, Friday.

Mr. and Mrs. J. H. Bailey spent Thursday in Burr Oak, Kansas, with relatives.

Will Robertson went to Lincoln, Thursday, to spend a few days with his sisters.

Fred Wallin of Harrisburg, Colorado, arrived Sunday, to visit his wife and children.

Jas. Silvey, the popular lumber dealer at Inavale, was in town Thursday afternoon.

Mrs. John Jensen and daughter went up to Inavale, Saturday night to visit relatives.

Mrs. Joe Topham Sr., went to Blue Hill, Friday, to visit her son, George Topham, and family.

George Delph returned to Kearney, Saturday, after having spent a few days with his parents.

Clyde Schultz and Earl Parson of Guide Rock, were the guests of Louis H. Schultz, Saturday.

Mrs. Rufus Misch left Friday for Seneca, Kansas, where she will visit her son, Will, and wife.

Mrs. F. M. Barlow went to Bladen, Thursday, to spend a few days with her daughter, Mrs. Claude Cramer.

Helen Holmes in a powerful dramatization of the great novel "Whispering Smith" at the Orpheum, Thursday, Nov. 23. Admission 10 and 15c.

Mrs. Al Spire was in Hastings, Tuesday.

Dr. E. E. Loller spent Saturday in Hastings.

Mrs. Ed Amack spent Friday in Hastings.

Law Breakey was over from Lebanon, Monday.

Roy Sattley, undertaker—auto hears in connection.

Commissioner elect John Kutzge was in the city, Tuesday.

For Sale—A base burner, in good condition.—Will Mountford.

Attend the chicken pie dinner in Peterson's new garage, Friday.

Mr. and Mrs. Hugh Wescott of Riverton were in the city Tuesday.

Miss Viola Spire returned home from Hastings, Tuesday evening.

C. E. Hill, of Hastings, was the guest of Roy Hassinger, Tuesday.

Mrs. S. C. Ellis and daughter, Helen, were passengers to St. Joe, Tuesday.

Mr. and Mrs. Humphrey Etherton returned home from Inavale, Monday.

John Hamilton, of Guide Rock, attended the Farmers' Institute, Wednesday.

Wesner & Koontz shipped a carload of hogs to Kansas City, Wednesday.

Thanksgiving is only two weeks away and turkeys are very high this year.

Mr. and Mrs. Chal Gellatly spent Tuesday evening with friends at Riverton.

Foot Ball game Friday, 3 p. m., Republican City vs Red Cloud.

The Misses Alice and Mabel Pope spent the weekend in Franklin with friends.

Don Fulton, Clark Crow, Jr. and Harold Lundy were in Blue Hill, Monday evening.

Mr. and Mrs. G. J. Warren returned home Monday evening from Claremore, Oklahoma.

Mrs. Bernard McNeny returned home Tuesday from Kansas City and Excelsior Springs.

If you want to sell or trade your real estate call on C. A. Schultz. Independent phone 208.

Attorney Bernard McNeny was attending district court at Benkleman the first of the week.

Mr. and Mrs. G. W. Lindsey left Tuesday evening for California where they will spend the winter.

Mrs. Julia Warren departed Wednesday for Indianapolis, Indiana, where she will attend a W. C. T. U. convention.

Mrs. W. G. Hamilton returned home Thursday evening from Guide Rock, after spending a few days with relatives.

The band boys will serve a chicken pie dinner in Peterson's new garage on Friday. Plan to eat your dinner there.

Mr. and Mrs. E. S. Fitz returned home Tuesday evening from Astoria, Illinois, where they had been visiting relatives.

Aaron Hedge left Monday for Greybull, Wyoming, where he has a position with the Fox-Saunders Bros. Lumber Co.

Several of the foot ball fans of this city are planning to attend the Nebraska-Kansas foot ball game at Lincoln, Saturday.

Lloyd Hines, who has been playing with the Ringling Bros. circus band the past season, has returned home for the winter.

Miss Mira Cook, who was called home by the illness of her father, Dr. Cook, returned to her studies at Omaha, Wednesday.

Mr. and Mrs. Sinter returned to their home at Indianola, Saturday, after having attended the Delaney-McP. and wedding on Thursday.

Messrs. John Uerling of Hastings and George Burgess of Los Angeles, returned to Hastings, Tuesday, after visiting at the N. B. Bush home.

We are in the market for 100 to 125 pounds Shovels at market price delivered at Serum Plant. Will pay for delivery to plant.—C. H. Miner Serum Co.

Mrs. Ella Patrick and sister, Miss Mira Cook, of Omaha arrived home Saturday morning, being called here by the sickness of their father, Dr. Cook.

Messrs. and Mesdames Oliver Powell, L. H. Blackledge, Herb Ludlow and Mrs. Wm. Hoffman attended the foot ball game at Lebanon, Friday afternoon.

Mr. and Mrs. Sim Robertson left Thursday for Lincoln, where they will spend the winter with their two daughters, Mesdames Will Kizer and Fred Sleeper.

Coming attraction at the Orpheum on Monday and Tuesday, Nov. 20 and 21, a fine trio, The Grey Family, Tennessee Harmony Singers and Entertainers. Adm. 10 and 20c.

The band boys will give a chicken pie dinner in Peterson's new garage on Friday. The boys are trying to raise money to buy new suits and if you are a live wire you should plan to attend the dinner.

Rev. Beebe was in Alma this week.

Fresh Allegretti Chocolates at Cotting's.

G. W. Trine was in Cowles, Tuesday evening.

Everett Bean of Inavale was in town, Wednesday.

The County Commissioners were in session this week.

Ralph Tumbelson of McCook spent Sunday in the city.

Chas. Funk went to Fairmont, Saturday, to visit friends.

The Chamber of Commerce will elect new officers on Nov. 28.

A beautiful line of Eaton & Crane's Stationery at Cotting's.

Commissioner elect James Hubatka of Bladen was in town Wednesday.

Mrs. T. Wilburn of Henley, Nebraska, is the guest of Mrs. L. H. Rust.

Mr. and Mrs. W. A. Kent have moved into the old Fourth avenue hotel.

Mrs. James Peterson and daughter, Miss Mary, spent Monday in Hastings.

Township organization was defeated in this county at the election held November 7th.

Mrs. H. A. Frey and son of McCook, are visiting her parents, Mr. and Mrs. C. T. Dickenson.

Lew Aubushon, after taking treatment at Kansas City, returned home the last of the week.

Mrs. James Burden returned home the last of the week from St. Joe, where she purchased millinery for her store.

Col. J. H. Ellinger left Tuesday morning for Vernon and Idalia, Colorado, where he had two public sales to cry.

Mrs. Fred Wittwer and daughter, Miss Nannie Wright, spent the weekend in Guide Rock with Mr. and Mrs. Art Robinson.

Supt P. M. Whitehead returned home the last of the week from Omaha, where he attended the teachers' association meeting.

Roy Sattley autoed to Downs, Kansas, Sunday, and brought his wife and little son home, who had been visiting being visiting at that place.

Mr. and Mrs. G. W. Ballard and her father, Rev. Hancock, of Ayr, spent the weekend with Mr. and Mrs. John Coon.

Friday afternoon the Red Cloud High school foot ball team will meet the Republican City High school team on the Koontz field. Go out and boost for the home boys.

Dr. Warrick, the specialist, will meet eye, ear, nose and throat patients and those needing glasses properly fitted at Dr. Damerell's office. Wednesday, Nov. 22. Hours 1 to 5 only.

George Corner and John Havel, in company with four Blue Hill citizens, went to Kansas City, Friday night, and drove back six Ford cars which the former had sold in his territory.

C. H. and Lloyd Rust and Ben Rasser are home from Wyoming. They each took up 320 acres of land in the valley south of Gillette. There are ten families from Red Cloud and Inavale located there.

Murvel Fentress of Riverton, and Miss Blondel Lain of Red Cloud were married in the County Judge's office Wednesday of this week, by Rev. J. H. McDonald of this city.—Franklin County Tribune.

Messrs. Hauserman and Ritzman, owners of the Orpheum Theater, have found it necessary to install several more seats in the theater in order to accommodate the increasing attendance which is attending that theater every night.

County Superintendent Gertrude Coon returned home from Omaha the last of the week, where she attended the state teachers' association meeting. She reports that sixteen rural teachers and superintendents of city schools of Webster county attended this meeting.

Local Farm For Sale

Well improved quarter section, 1/4 mile north from corporate limits and 1 mile from center of business center of Red Cloud. All first and second bottom. All readily tillable excepting creek channel and timber. 30 acres first bottom, 130 acres low second bottom—110 acres in cultivation, 50 acres pasture, and timber, 55 acres finest alfalfa.

This farm is most attractively located on main-traveled north road into Red Cloud. Can easily have all the conveniences in line of mail, telephones, electricity, schools and churches of this city, and is no further out than the remoter districts inside the corporation. An ideal home, dairy, feeding station, stock and grain farm. Excellent soil and good producer, with running water and shade, well drained and sheltered lots.

Quarter measures out 161 acres. This farm is priced to sell and \$6000 cash will handle it.

Satisfactory terms to purchaser.

Daniel Garber Owner and Operator. RED CLOUD, NEBRASKA.

Farm Loans

I have the cheapest rates and best option in the state, with several plans to choose from. Sole agent for Treve, Mattis & Baker J. H. BAILEY.



Copyright 1916 The House of Kuppenheimer

We Want Your Clothing Business

We are entitled to your clothing business if Fair Dealing and Good Merchandise count for anything

We sell and guarantee Kuppenheimer and Cloth Craft Suits and Overcoats

This statement should carry great weight as these two lines are America's BEST Clothes

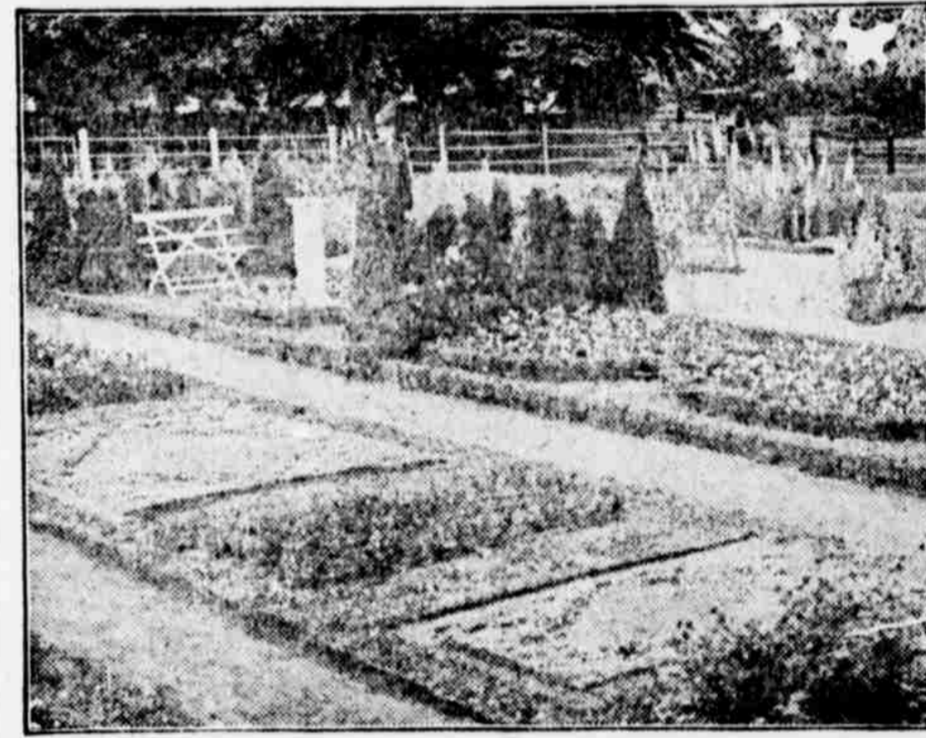
Kuppenheimer or Cloth Craft Suit or Overcoat \$10 to \$25

Boys and Childrens Suits and Overcoats \$3 and up

We carry a big line of low priced, high grade Hats, Caps, Shoes, Furnishing Goods and invite your careful inspection

The Cowden-Kaley Clothing Co. "ALWAYS RELIABLE"

The HOME BEAUTIFUL Flowers and Shrubbery Their Care and Cultivation



A Beautiful Flower Garden.

POINTS IN POTTING PLANTS

By EVA RYMAN-GAILLARD.

Plants grown for beauty of their foliage should be given rather large pots, holding plenty of rich soil, while those grown for blossoms should be in smaller ones.

Root-bound plants seem to produce more and finer blossoms, but this should not be construed to mean keeping them so tightly root-bound that they starve to death.

When the pot is full of roots shift the plant to one an inch or two larger, and fill the space with good soil.

Never fill a pot so full of soil that the water runs off the top instead of settling into the soil. Leave a space vacant in the top of the pot, an inch or more, according to the size of the pot and the amount of water needed by the plant.

For plants having hard, woody stems, the soil may be level on the surface, and no harm is done as the water standing around the stem will not injure it, but for soft, crown-centered plants like the primrose, the soil should be higher in the center than at the edge.

It is well, too, to avoid pouring water into the crown of the plant, as the manner in which the leaves come up makes them drain the water down into the crown of the plant and produce what is known as "crown-rot," which kills all buds which form.

Much is said of using "thumb pots" in which to root cuttings, but (after rooting hundreds) I prefer three-inch pots to the smaller ones.

Or, you can heap the earth against it, on the side toward which you propose to bend it, and over this the canes can be bent. I prefer this method because it does not disturb the roots. The earth should not be as high where it touches the plant as it is a few inches from it.

The object is to form a support of soil which will enable you to curve the bushes over it, thus avoiding the sharp sudden bends which do so much injury to one's plants.

Lay all the bushes in one direction, placing the stalks close together. By doing this, much covering can be saved.

When the plants are laid down, place pieces of sod on them to hold them in place. If this is not done, they will be sure to spring back to an upright position before you get them covered.

Cover with dry earth to the depth of four inches. If leaves are used, it will be necessary to make a little pen to confine the leaves.

After covering the bushes with soil or leaves provide a second covering of boards, or something that will shed rain. If water is allowed to settle into the soil above the bushes, and remain there, they will be greatly injured by it. One must plan to keep the covering as dry as possible. This is of the greatest importance. If the ground is not well drained, make little ditches between your plants in the fall, for surplus to run into.

Plants Grown for Beauty Should Be Given Rather Large Pots.

In such a frame there are 3,276 square inches, and allowing three square inches to the plant, one can have over 1,000 plants per frame.

Good rich soil is used and the under soil is made quite loose to give a chance for root growth. It is best to grow the plants in the open and transplant on the approach of severe weather.

Frames of a larger size are not easily handled, nor can the same protection be given them. On mild days we give light to the plants by removing the outer sash, and if safe we raise the inner sash to admit fresh air.

These frames are not expensive where one can do his own work and they add a good per cent to the investment.

The FOLKS AT HOME EXPECT YOU TO TELL 'EM ALL ABOUT "OMAHA'S FUN CENTRE," THE Gayety VISIT IT. Exhilarating Burlesque; Vaudeville. Stage Always Filled with Pretty Girls, Fancy Clowns, Gorgon Equips, Brilliant Scenic Environment. LADIES' TIME MATINEE EVERY WEEKDAY. Everybody Goes! Ask Anybody ALWAYS THE BIGGEST AND BEST SHOW WEST OF CHICAGO.

Cold Frames for Wintering Plants

By L. M. BENNINGTON.

Successful gardening depends on early production. Cold frame plants are more certain to live than hotbed plants and give a larger per cent of good stuff than do the more tender hotbed plants.

To construct one use two frames instead of one. The larger frame is four and one-half feet by seven and one-half feet and one foot deep. The inner one is one foot smaller each way and only eight inches deep.

The space all around the inner frame, six inches wide, is filled with dry sawdust well packed down.

The covering for the inner frame is a glass-covered sash made to fit quite close to the frame to exclude the air.

The outer frame is covered with an oiled canvased frame so as to be waterproof.

A strip of carpet, or other good material, is kept over the inner sash in severe weather.

We prefer shallow frames to keep the plants from growing spindling. We choose a location free from cold winds and where a good exposure to the sun can be had.

In such a frame there are 3,276 square inches, and allowing three square inches to the plant, one can have over 1,000 plants per frame.

Good rich soil is used and the under soil is made quite loose to give a chance for root growth. It is best to grow the plants in the open and transplant on the approach of severe weather.

Frames of a larger size are not easily handled, nor can the same protection be given them. On mild days we give light to the plants by removing the outer sash, and if safe we raise the inner sash to admit fresh air.

These frames are not expensive where one can do his own work and they add a good per cent to the investment.



When the Firemen Appear

the insured man's first thought is one of thankfulness that he is so. How about your thoughts if a fireman should appear at your home?

The Day Before the Fire

is the day to insure. As that day is to-morrow for all you can know do, it follows that prudence would tell you to stop in our office to-day and have us issue you a policy.

O. C. TEEL Reliable Insurance

San-Tox ELIXIR TONSILLITIS. Enlarged tonsils and inflamed condition of the throat, especially in children should receive prompt attention. Here is a preparation which brings speedy relief in those conditions. May be taken internally or used as a gargle. Either way, it is more pleasant than the ordinary throat remedy. Children do not object to it. Don't fail to give SAN-TOX Elixir Tonsillitis a place in your medicine cabinet. You will find it fully up to the high standard of excellence maintained in all SAN-TOX preparations.

C. L. Cotting THE DRUGGIST