

THE RED CLOUD CHIEF
Red Cloud, Nebraska

PUBLISHED EVERY THURSDAY

Entered in the Postoffice at Red Cloud, Neb., as Second Class Matter

A. B. McARTHUR PUBLISHER

THE ONLY DEMOCRATIC PAPER IN WEBSTER COUNTY

The brilliant light on the stand-pipe reveals the scarcity of light in the business district. We believe that the administration should provide for a better lighting system on our main streets. If there is any thing that makes a town look dead it is the dismal feeble lights at night time. Looks as tho every one had skipped off and left things deserted. Just a few modern lights on the four corners would make a wonderful difference.

Roscoe Weesner and Mrs. Burden inaugurated a novelty in this city Saturday by giving a procession of floats showing the latest styles in cloaks and millinery. There was a living exhibit of the very nicest and choicest of wearing apparels imaginable. Anyone could see just how stylish the new models are. As an advertising feature it was a success and we congratulate these business houses on their enterprise. We have the goods in this city and if we let the people know it they will gladly come here to make their purchases. Stand up for Red Cloud.

The beacon light has been installed on the top of the stand-pipe. This lamp is of many candle power and can

be seen for miles around. It sheds its rays impartially for the learned and the unlearned, the rich and poor, the just and the unjust, cheering the weary wander, beckoning the way to home and shelter. The idea is a good one and we congratulate the administration on its being useful as well as ornamental. Which reminds us that we are following the lead of the United States government in this matter. This country has the best lighting system for coast sailing in the world. There are over nine thousand beacon lights installed by our government on both coasts and the lakes. These lights make it possible for sailors to travel at night safe from hidden dangers and with the feeling that they are still at home. One of these lights sends a ray of light one hundred miles. It is of very heavy candle power and is equipped with strong focusing lenses which collect the rays of light and send them like a streak across the water. Red Cloud is now on the map day and night and no stranger can make a mistake if he heads this way.

Weekly Weather Forecast

Weather forecast for the week beginning Wednesday, Sept. 22, 1915 issued by the U. S. Weather Bureau, Washington, D. C., for the Upper Mississippi Valley and Plains States: Fair weather and moderate temperature the first half of the week, although frosts are probable Wednesday in the Upper Mississippi Valley. The weather will become warmer and unsettled by the middle of the week, with scattered showers. The latter part of the week will be generally fair.

Apples For Sale

Good eating and cooking apples, 25c per bushel.—W. E. White, 1 mile north and 2 1/2 miles west of town.

WRESTLING MATCH

AT

Red Cloud, September 30

IN

Newhouse Building

Beginning At 9 P. M.

Tommy Doctor
Of Belleville, Kansas, 145 Lbs.

VS.

Young Russell
Of Friend, Nebraska, 150 Lbs.
FOR \$500 A SIDE

Best Two Out of Three Falls. Must Go To a Finish

Tommy Doctor Holds the Welter Weight Championship of Kansas, and This Match Must Be a Go As a Forfeit Has Been Posted.

Admission - - 75c

What is Your Ability Worth to You Without The Time to Apply it?

Better Insure Your Time in a Safe Company
100,000,000 Assets
Spells the Strength of

The Travelers of Hartford

Geo. M. VanCamp, Agent

(Over Storey's Clothing Store)

THE OFFICE WHERE YOUR CLAIMS ARE WELCOME

PHONES: Ind. 241 and 173 Bell 123

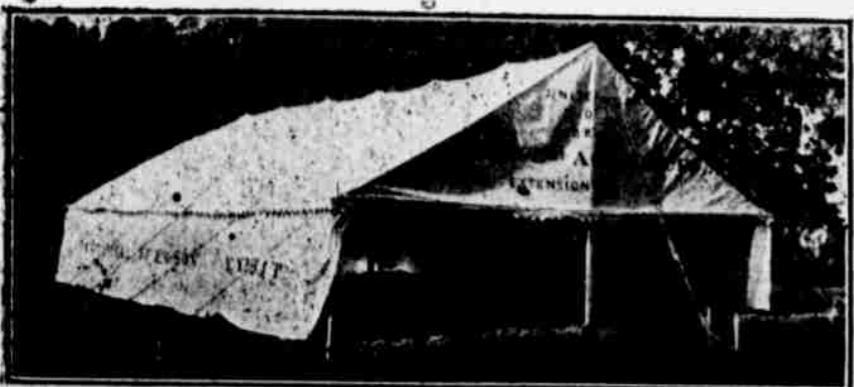


Exhibit Tent College of Agriculture, at Webster County Fair to be Held at Bladen, Nebraska, Next Week



The Miner Bros. Co.

The Store That Sells Wooltex



The New Fall Styles

WHEN you choose your fall suit or coat, you want to select it from garments that bear the stamp of style correctness. You want to choose from assortments that afford a wide range of models, materials and colors—garments among which you are sure to find one that is most becoming to you.

We invite you this week to our

Advance Autumn Display of Wooltex Coats, Suits, Skirts

AMERICA'S greatest organization of fashion designers assures the style correctness of these garments. The Wooltex Bureau of Fashions in Paris, with Madame Savarie as its director, has been maintained despite the great war.

Here are the style features to look for in your new fall suit or coat

Natural figure lines are most stylish. Not tightly fitted, but with the graceful curves of the natural figure.

Jackets are made semi-fitting or loosely belted to give modish lines. Many have the smart flare below waists. Jackets are hip length or long.

Skirts have rolling pleats or flat pleats on the sides to give fullness.

Come in this week. See the new style features, how becoming they are. Try on a few. Get acquainted with the new styles, even if you are not yet ready to buy.

- Suits at - - \$25.00 to \$65.00
- Coats at - - 16.50 to 45.00
- Skirts at - - 5.00 to 15.00

The Miner Bros. Co.

The Store That Sells Wooltex

Coats Suits Skirts

"A Mighty Safe Place To Trade"



Sunday, September 26

"Billy Sunday and the Omaha Campaign."

(Evening Subject)

SUNDAY SCHOOL

At 10 A. M.

The United Church

J. L. Beebe, Pastor 1st Door South of Court House

Will You Visit The Exposition This Autumn Or Winter?

Thousands are going to California to see that marvelous exposition before the gates are closed December 31st. Many will make an autumn tour at these cheap rates, returning before winter, while many will leave before cold weather for the winter in Southern California, going via San Francisco. The final return limit of Exposition tickets is December 31, 1915; those spending the winter in California should travel either on one way tickets, or there is available the first class nine-months excursion ticket. The Burlington operates daily through sleepers to San Francisco and Los Angeles via the popular route through Denver, Scenic Colorado and Salt Lake City.

Consult me if you expect to go this autumn. Let me make your through reservations early. Whether you go first to Los Angeles or to San Francisco you have Burlington through sleeper service.

Burlington through service California routes comprise a "See America" tour that includes the scenic, the highly developed regions, the attractive cities of half a continent.



N. B. BUSH, Ticket Agent, Red Cloud, Nebr.
L. W. WAKELEY, General Passenger Agt.
1004 Farnam Street, Omaha, Nebr.