

A Newspaper That Gives The News Fifty-two Weeks Each Year For \$1.50.

VOLUME 42

RED CLOUD, NEBRASKA, NOVEMBER 26, 1914.

NUMBER 48

If You Desire



VERY one of your banking connections to be a profitable one, returning you the largest measure of service and accommodation commensurate with the size of your deposit, open an account with us. Interest paid on time deposits.

Deposits Guaranteed by State Guaranty Fund

WEBSTER COUNTY BANK,
RED CLOUD, NEBRASKA
CAPITAL \$25,000

NOW IS THE TIME TO THINK OF YOUR COAL WANTS

We Handle All Kinds "GOOD SERVICE"

THE MALONE-AVERY CO.
"Talk With Us About Your Wants"

Is Your Watch a Guessing Machine?

THEN discard it, and at the same time rid yourself of the mental uncertainty and hesitation caused by continually allowing a watch-may-not-be-right margin.

Purchase one of Our Elgin Watches

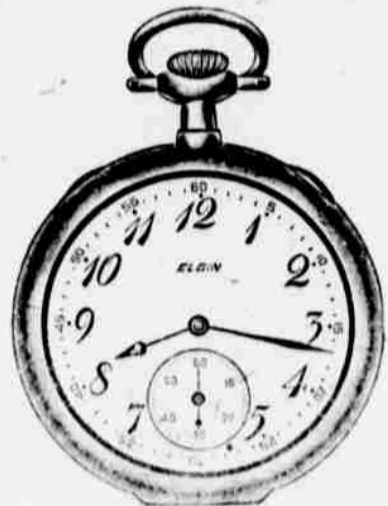
It's a watch you can believe every time and all the time.

There's extra value in the Men's Watches we offer at \$25.00

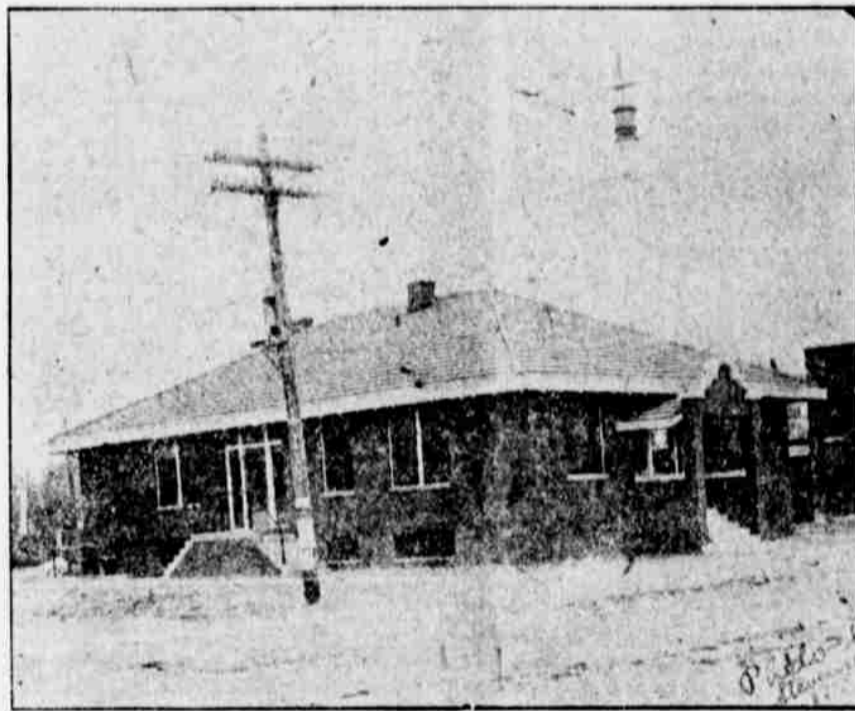
Join our Club and get the benefits

E. H. NEWHOUSE
ELGINEER

C. B. & Q. Watch Inspector Scientific Eye Fitting



THE HOME OF The Farmer's Independent Telephone Co.



The above is a cut of the Farmer's Independent Telephone Company's new building erected at the corner of Webster street and Fifth Avenue, during the past season. The building is made of brick with tile roof, one story and basement ground, size 38x56 feet, and occupied as an exchange or operating room with dwelling in the rear for J. A. B. afford, the wire chief, a ladies rest or waiting room on the north side of the front entrance, and the office of O. C. Teel, the secretary of the company, on the south side of the front entrance.

The Farmer's Independent Telephone Company was organized in June 1907, and is comprised of 376 stockholders of which 313 shares are held by the farmers in the vicinity of Red Cloud, the balance of the stock is held by the merchants and residents of the city.

The incorporators of the company were S. W. Frisbie, J. W. McIntyre and Wm. Crabill. The first officers were A. McCall, president, J. W. McIntyre secretary and Wm. Engels, treasurer.

The first site purchased by the

company was lot 12, block 6, Red Cloud, but when the erection of the new building was contemplated, it was necessary to purchase an adjoining lot from J. W. Moraville.

Eight years ago last October the stockholders in annual session elected O. E. Ramey, J. H. Ellinger, Clark Stevens, Frank Wittwer and O. C. Teel directors of the company, and the above named gentlemen have acted in that capacity ever since, except Mr. Wittwer, who resigned early last spring and George Beardlee was chosen in his place.

These men have worked in perfect harmony, and today the worth of the telephone property has doubled in value and the Chief can only see a prosperous future in store for this company.

The present officers are O. E. Ramey, president; O. C. Teel, secretary and Clark Stevens, treasurer and business manager.

The present switch board operators are Vina Stevens, Mrs. Maude Renfro and Ethel Turner.

Red Cloud High Plays Tie Game With Nelson College Last Friday Afternoon

The Red Cloud High School eleven held the heavy Nelson College team to a 7 to 7 score last Friday, in a game that was hard played and one that was the roughest played in Red Cloud in years.

The Nelson College team outweighed the locals 25 lbs to the man. The game played by the College team was dirty, unfair, slugging and rough play being continually displayed. The entire College team were novices at the game of foot ball, and not only did they not know the first rudiments of the game, but displayed a fighting tendency that did not end when the game ended, but was again in evidence on the main street, after the game. From a spectators standpoint the game was some what interesting, only the disgusting methods of the College team spoiled what might have been a good game. The officials in overlooking penalties, only made matters worse. The locals in order to protect themselves, were compelled to resort to the same methods in retaliation. It is to be hoped that in the future that games of this class will be barred from the schedule, and one with some high school be scheduled.

The game opened with Red Cloud kicking to the College 40 yard line, which was returned 5 yards. The College made their 10 yards in four downs, and on the next down lost the ball on a forward pass, ball being intercepted by Kyde for a five yard gain. Red Cloud with possession of the ball, started for a touchdown. Giger made

two yards, Blackledge added 20 yards, on an end run, which placed the ball on the College 25 yard line. Polnick added two yards on a line smash. Shuck on an end run added 9 more. Polnick again added two yards and Blackledge added 4 yards. College was penalized 5 yards for holding and Blackledge then going over for a touch down. Polnick kicked goal, score 7 to 0. Red Cloud again kicked to the College 30 yard line, who returned 20 yards on their first down. The College attempted a forward pass, which was intercepted by Polnick. Red Cloud failed on a forward pass and Giger made 25 yards on an end run. Shuck added 10 more on an end run. Blackledge added 5 more, Shuck again added 8 yards and Polnick added 2 yards, putting the ball on the College six yard line, where a forward pass failed in the end zone, and it was the College ball on their 20 yard line.

College was forced to punt on their fourth down, but recovered punt. Blackledge was forced to leave the game on account of injury. College was held for downs and Giger won 3 yards, Polnick added two, when time was called for first quarter with ball on 40 yard line.

Second quarter opened with Red Cloud punting out of bounds, and ball went to College on their 20 yard line. College was forced to punt, and Zeiss returned 5 yards. Red Cloud again punted and ball was in College possession on their 20 yard line. On the College first down they were pen-

WE ARE THANKFUL



That the war is in Europe instead of the United States for were it in the United States we might not be able to sell you the dependable furniture that you need in your home.

Never has our stock been larger than at this time. Come in and look it over before you buy elsewhere. You can see what you are buying here and then you have our guarantee back of any thing you buy.

ROY SATTLEY

Licensed Embalmer and Furniture Dealer.

CHRISTMAS STORE

BRING THE CHILDREN TO THE SANTA CLAUS STORE

We have gifts for the ladies
Toys for the babies
Gentlemen will find
Presents of every kind

DECEMBER 1 IS OPENING DAY FOR

The Model Variety Store

alized 15 yards for rough play, and then punted 30 yards, Pope returning 10 yards. A forward pass failed for Red Cloud and Polnick punted 35 yards, which was returned 10 yards. College on their first down made 20 yards on a forward pass. The second half was a repetition of the first. The ball zig zagged back and forth in possession of the College and then Red Cloud. One redeeming feature of the third quarter was a 35 yard end run by Shuck, which placed the ball on the College 12 yard line, where Polnick failed at a drop kick for goal.

The fourth quarter opened with ball on Red Cloud's 25 yard line in College possession. On first down College failed to gain and Red Cloud was penalized 12 1/2 yards for rough play. A forward pass by the College scored their touch down, and they kicked goal, score 7 to 7.

College kicked off to Red Cloud 50 yards. Giger returned 5 yards on first down. Polnick added 6 yards and on second down punted 55 yards, Zeiss recovering the ball. Polnick added 2 yards, Blackledge who had returned to the game, on a fake play added 9 yards. Giger added 3 yards,

forward pass to Pope added 12 yards, putting the ball on the 30 yard line, while Polnick failed at a try at a drop kick for goal. College ball on their 20 yard line. College tried a forward pass which Blackledge captured and game was called, score 7 to 7.

Referee, Sherwood; umpire Barrett.

Guide Rock Child Meets Death By Fire

The five year old daughter of Mr. and Mrs. L. C. Smith, who reside seven miles southwest of Guide Rock was burned to death late Friday afternoon says the State Journal. The parents left the three children at home, and came to town to do the week's trading. On their return home they found the eldest in the road, near their home dead, her clothing burned from her body, and the flesh burned to a crisp. The two smaller children were playing in the house unharmed. The child attempted to pop some corn, and when her clothing caught fire, started to run to the home of a neighbor.

FOOT BALL

FRANKLIN ACADEMY
VS.
RED CLOUD HIGH

THANKSGIVING DAY

On Koontz's Field At 2:30 P. M.

Admission - - 25c