

# There's Nothing Better

Than our complete line of Groceries, Queensware, Cigars, Candies, Tobacco. You will find us able and willing to supply your wants in a very satisfactory manner at all times, and our chief endeavor is to please. Now, with these inducements and incentives to give us a trial order, why not do so today.

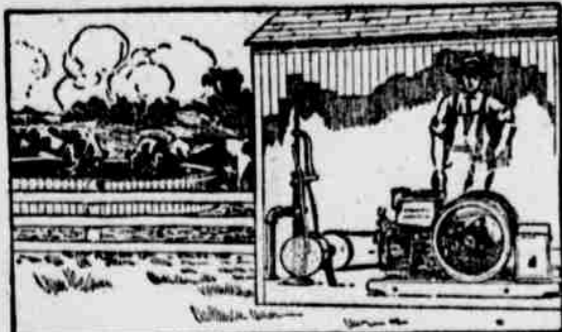


A Trial Will Convince You

## P. A. WULLBRANDT

THE HOME GROCERY

# International Harvester Oil and Gas Engines



**The IH Line**  
GRAIN AND HAY MACHINES  
Mowers, Reapers, Mowers  
Rakes, Struckers  
Hay Loaders  
Hay Presses  
CORN MACHINES  
Planters, Pickers  
Mowers, Cultivators  
Endless Cutters  
Shellers, Shredders  
TILLAGE  
Paw, Spring, Tooth, and Disk Harrows  
Calibrators  
GENERAL LINE  
Oil and Gas Engines  
Oil Tractors  
Manure Spreaders  
Cream Separators  
Farm Wagons  
Motor Trucks  
Trashers  
Grain Drills  
Feed Grinders  
Kilns  
Blender Trains

EVERY wise farmer does what he can to save money, time, unnecessary hard work, and to have as pleasant a life as is possible.

Therefore, wise farmers buy International Harvester engines, engines of standard construction with features like the offset cylinder head, accurately ground piston and rings, extra large valves, detachable valve guides, split-hub fly-wheels—features that make them last by far the longest and save the most money in the end.

Be sure when you buy your engine that it is an I H C engine, and you will be sure of best material and best construction. They are made portable, stationary, or skidded; vertical or horizontal; air or water-cooled. Sizes range from 1 to 50-H. P. They operate on both low and high grade fuels.

Not every local dealer can show you International Harvester engines. Write us for interesting catalogues and full information, and we will tell you the name of the local dealer who handles our engines.

International Harvester Company of America

Lincoln Neb.  
Champion Deering McCormick Milwaukee Osborne Plano

# FURNITURE

AND

# UNDERTAKING

# ED. AMACK

ALL THE PHONES - NEWHOUSE BLK.

# DON'T GET INTO DEBT

# ON A RENTED FARM

Get into the dairy business on your own farm. I can put you in touch with the owners of fine prairie lands of rich soil, from 200 to 400 miles west of Omaha, which can be bought on very easy terms at from \$15 to \$20 per acre. You are sure to make money by modern dairy practice, because the soil is the solution to the dairy problem and feed crops are heavy on these lands. If you haven't money at first to build a silo, dig one. Good farmers with proper equipment and I feed can secure cows on time.

These owners make these special terms to dairy farmers, because they know that a good dairy farmer will make money by earn dairy farming and will soon clean up his obligations. Then hogs and poultry fit right in and add out the profits. These 100 acre tracts are located among improved farms in established communities.

Give me your name; let me help you become the owner of a dairy farm, no matter whether you want to buy on easy terms in Nebraska or Eastern Colorado, or whether you want to homestead a 200 acre Mandell tract in Wyoming.



S. B. Howard, Ass't. Immigration Agent  
1004 Farnam St., Omaha, Nebraska

I am again ready to make farm...  
Sole agent for...  
The next band concert will be given...

# THE RED CLOUD CHIEF

Red Cloud, Nebraska

PUBLISHED EVERY THURSDAY

Entered in the Postoffice at Red Cloud, Neb., as Second Class Matter

A. H. MCARTHUR - PUBLISHER

THE ONLY DEMOCRATIC PAPER IN WEBSTER COUNTY

## Political Announcements

Announcements Are Run Under This Head By Paying the Sum of Five Dollars Which Must Be Cash in Advance. Our Columns Are Open For Any Legitimate Advertising and We Welcome Announcements Regardless of Party Affiliations.

### FOR SHERIFF

I hereby announce myself a candidate for the office of Sheriff of Webster County, subject to the will of the voters of the Democratic party at the primary election to be held August 18, 1914.  
BEN HUDSON.

I hereby announce myself a candidate for the office of Sheriff of Webster county, subject to the will of the voters of the Democratic party at the primary election to be held August 18, 1914.  
GRANT CHRISTY.

I hereby announce myself a candidate for the nomination of Sheriff of Webster County subject to the will of the voters of the Democratic party at the primary election to be held August 18, 1914.  
CHAS. J. REDDON.

I hereby announce myself as a candidate for the office of Sheriff of Webster county, subject to the will of the voters of the Democratic party at the primary election to be held August 18, 1914.  
JAS. HUBATKA.

I take this method of announcing myself as a candidate for the office of Sheriff of Webster county, subject to the will of the progressive voters to be expressed at the primary August 18th  
T. W. WHITE.

### FOR COUNTY TREASURER

I hereby announce myself as a candidate for the office of Treasurer of Webster County, subject to the will of the voters of the Democratic party at the primary election to be held August 18, 1914.  
GEO. W. TRINE.

I take this method of announcing my candidacy for the office of County Treasurer, subject to the decision of the republican voters at the primary August 18th  
C. D. ROBINSON.

### FOR COUNTY CLERK

I hereby announce myself a candidate for the office of County Clerk of Webster County, subject to the will of the voters of the Democratic party at the primary election to be held August 18, 1914.  
FRANK VAVRICKA.

I hereby announce myself a candidate for the office of County Clerk of Webster county, subject to the decision of the voters of the Republican party at the primary to be held August 18th, 1914.  
CHAS. C. BENNETT.

### FOR COUNTY COMMISSIONER

I hereby announce myself a candidate for the nomination of County Commissioner of Commissioner District No. 1, subject to the will of the voters of the Democratic party at the primary election to be held August 18, 1914.  
A. H. BRIGHT.

### FOR REPRESENTATIVE

I hereby announce myself as a candidate for State Representative for the 45th district subject to the will of the Republican voters at the primary election August 18th. I trust I merit your support.  
A. F. HARTWELL.

### FOR COUNTY ATTORNEY

I hereby announce myself a candidate for County Attorney of Webster county, subject to the action of the Democratic party at the primary election, August 18, 1914.  
E. G. CALDWELL.

I hereby announce myself as a candidate for the office of County Attorney, subject to the will of the voters of the Republican Party at the primaries to be held on August 18th, 1914  
BRANSON W. STEWART.

A. F. Hartwell has announced himself as a candidate for representative. He is an A. N. S. man, well liked by everyone, and has made a good representative. He is in the wrong track, however, and if he was only a Democrat we could all vote for him.

Jas. Hubatka of Bain township has announced himself as a candidate for the office of county sheriff, subject to the will of the voters of the Democratic party. Mr. Hubatka is a man whom everyone considers is well qualified for this position. He is well known all over the county as a man of good character and a man of ability. He has been a resident of this county for over thirty years and his record is clear and clean. His many friends will be

# Why we sell and feature Wooltex Coats, Suits and Skirts

Our business after all is your business. Unless we can please you, we can't continue to do a satisfactory business



We have found that Wooltex coats, suits and skirts give entire satisfaction to the best-dressed women of this community. Women tell us repeatedly that whenever they buy a Wooltex coat, suit or skirt,

they are certain that the style is correct; and because of the Wooltex guarantee there can be no doubt but that the garment will give satisfactory service. Could there possibly be a better reason why we sell Wooltex coats, suits and skirts?



# The Miner Bros. Co.

General Merchants.

## The Store That Sells Wooltex.

Come and see us for all that is right in Dry Goods, Women's Furnishings, Coats, Suits, Skirts, Rugs, Carpets, Shoes and Groceries.

pleased to learn that he has decided to enter the race for county sheriff

### Farm Loans

Lowest rates, best option. Call for me at State Bank. C. F. CATHER.

### Notice of Final Report.

In the County Court of Webster county, Nebraska.  
In the matter of the estate of Alice Finkenbinder, deceased.  
All persons interested in said estate are hereby notified that the Administrator has filed a final account and report of his administration, and a petition for final settlement of his account and a discharge from his trust, which have been set for hearing before said court on the 20th day of May 1914, at 10 o'clock, A. M., when all persons interested in the premises may appear and contest the same. Dated this 5th day of May 1914.  
(Seal) A. D. HANNEY, County Judge.

### In the County Court of Webster County, Nebraska.

State of Nebraska, ss.  
Webster County, ss.  
In the matter of the estate of Effie D. Strickland, deceased.  
CREDITORS of said estate will take notice, that the time limited for the presentation and filing of claims against the same is November 20th, 1914; and for the payment of debts April 25th, 1915; that I will sit at the county court room in said county on the 30th day of November 1914, at 10 o'clock A. M., to receive, examine, hear, allow, or adjust all claims and objections duly filed.  
Dated this 25th day of April, A. D., 1914.  
(Seal) A. D. HANNEY, County Judge.

# CAMP

## THE CHIROPRACTOR

Red Cloud, - Nebraska  
Second House North of I. O. O. F. Hall

—O—  
Consultation and Spinal Analysis Free

—O—  
Phone Ind. 212

## E. S. Garber

Real Estate, Farm Loans and Insurance.  
Red Cloud, - Nebraska.

## GERMOZONE'S Big Value

is not so much in its great efficiency as a remedy for cough, cold, croup, whooping cough, influenza, and other diseases of the respiratory tract, but in its ability to soothe and relieve the throat, loosen the phlegm, and break up the mucus, which is the cause of the trouble. It is a most valuable remedy for all these ailments, and is sold by dealers or post paid, 25c per bottle. Sold by dealers or post paid, 25c per bottle.

# MIRRORS!

## MIRRORS

Of all sizes and shapes. If it is a Bath Room Mirror you need we have them in White Enamel with Plate Glass, Shelf and Towel Rack. We also have them in Gilt, Walnut and Oak Frame, in all of the sizes in French Bevel and Plain. The price is right.

# ROY SATTLEY

Licensed Embalmer and Furniture Dealer.

## FOR SALE

# DeLaval and Beatrice Cream Separators

## Queen Incubators

Flour and Feed of All Kind

## Geo. W. Trine

Both Phones

## Dr. Nicholson

DENTIST  
OFFICE OVER ALBRIGHT'S STORE  
IN HVERTON ON MONDAY

## DR. DEARDORF

VETERINARY SURGEON  
Graduate Chicago Veterinary College  
TWELVE YEARS EXPERIENCE

AT BAILEY'S TIE BARN