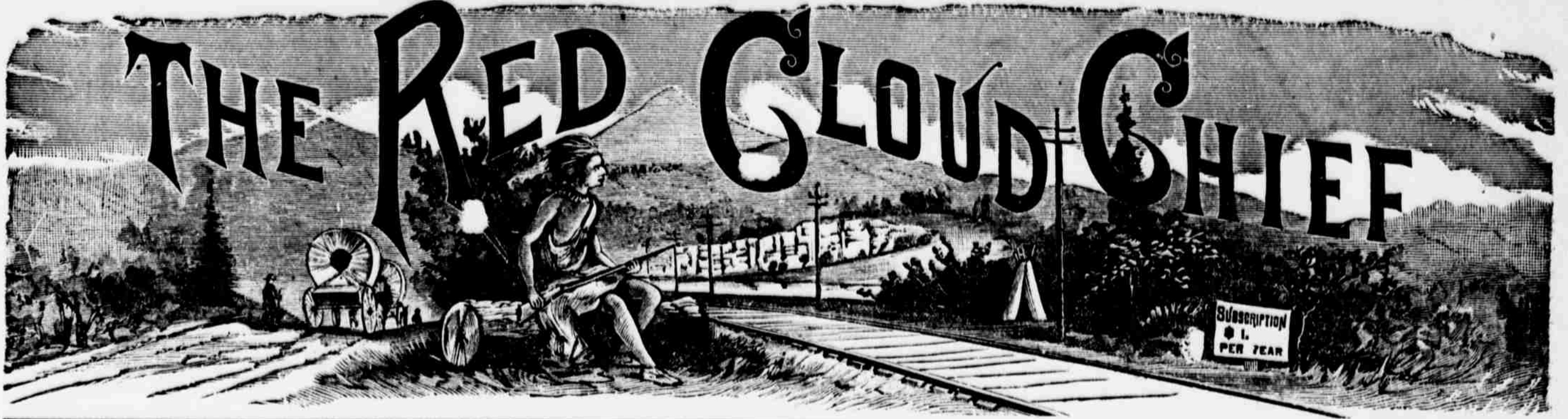


# THE RED CLOUD CHIEF



VOLUME XXXII.

RED CLOUD, NEBRASKA, APRIL 29, 1904.

NUMBER 18

**Miner Bros. Miner Bros.**

## RIGHT PRICES!

By right prices we don't mean City prices or Bargain prices, but prices that are right for reliable merchandise. We stand back of the representation of every article sold from this store. If you are not satisfied with your purchase, bring it back in salable condition and we will cheerfully refund your money.

### GINGHAMS.

A lot of 1,000 yards of fine Gingham in stripes, checks and plain colors—the usual 10c kind. Instead of 10c, price **8c**

One lot of French Gingham in stripes. These are mostly remnants and short lengths carried over from last fall, with a number of new patterns. Usual price 25 to 30c. Price now **18c**

### NECK RIBBONS.

Some pretty new novelties in fancy neck ribbons. Satin Tafeta in white, with large silk em-

broidered dots in pink, blue and red. Champagne color with small silk embroidered dots, in white, red and black. A late novelty; per yard **35c**

### LACES.

500 yards of 2 to 4 in. Torchon and Val Laces. Come while the assortment is complete. Per yard, while they last **5c**

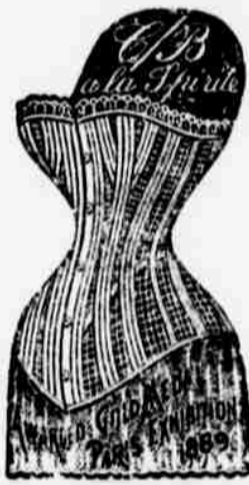
### SILK GINGHAMS.

Whites and black stripe, colored stripes, plainwhite, lace effects, etc., in regular 50c cloth, but remnant lengths of 5 to 18 yd pieces. Instead of 50c **33c**

## CORSETS.

We are overstocked on one number of Corsets—our No. 294 in black and white; a full run of sizes, in the perfect-fitting C-B. Corset. Regular value \$1.00.

**Special, 75c.**



"Satisfaction or money back."

# MINER BROS

### Big Horn Basin.

Your spare time will be well spent if you will use it in making a trip to this new irrigated country. The United States will not be long now in getting under irrigation all the land that is subject to this class of farming, as it is becoming the most popular way to farm for sure results. This country is yet in its infancy, and homeseekers should avail themselves of this opportunity to get a farm in the Big Horn Basin. Just now you can get the choice of this land at a very low price, and you will be surprised what a delay of a few days will do for you in the price of this land.

Post yourself on this country by writing for booklet description of the Big Horn Basin and other information you may desire.

We will make very low round trip rates to this country the first and third Tuesday in May.—J. Francis, General Passenger Agent, Burlington Route, Omaha, Neb. may 8.

### Real Estate Transfers.

Transfers for week ending Wednesday, April 27, furnished by J. H. Bailey of Webster County Abstract company. Lincoln Land Co to George Solomon lot 3 blk 1 1st add to Bladen wd. 50  
Henry Boyd to E. A. Yost pt. nw 4 sw 4 8-11 wd. 60  
Ellen G. Talbot to Village of Guide Rock pt. sec 4-1-8 wd 7

W B Gasehe and wife to F J Olmstede s 2 sw 1 and sw 4 nw 4 17-19 wd. 800  
Lincoln Land Co to Carrie L Baker lots 1-2-7 and 8 blk 5 1st add to Bladen wd. 150  
Lincoln Land Co to Luella T Baker lots 3-4-5 and 6 blk 1 1st add to Bladen wd. 150  
Total 11217  
Mortgages filed \$5400  
Mortgages released \$5800

### Business Notices.

Light harness at Joe Fogel's.  
Infants' all-wool white shirts, 50c. F. Newhouse.  
Try Ward Hayes for a first class shave or hair-cut.  
If you want the best and cheapest harness, go to Fogel's.  
Furnished Rooms for Rent—Inquire of Mrs. J. A. Tulley's.  
Moranville's Perfection Hair Tonic for sale at Schaffert's barber shop.  
Some more of that cream white Henrietta at E. Newhouse's, at 25c a yard.

### Card of Thanks.

We take this method of expressing our appreciation and gratitude to all friends who showed us so much kindness and sympathy during the sickness and death of our son and brother.  
MR. AND MRS. GEORGE GARNER AND FAMILY.

## CORRESPONDENCE

Interesting Items Gathered by Our County Reporters

### Catherton

Mrs. A. I. Bittan was numbered with the sick last week.  
C. F. Cather was in this vicinity last Saturday on business.

Mr. and Mrs. Otto Jensen are visiting relatives in Nubkols county.

Born, to Mr. and Mrs. Wm. Muscogrove, Friday, April 15, a baby girl. Will says he will not allow the boys to come around now.

Mrs. Brethauer's windmill blew to pieces during the strong wind last Sunday.

Miss Bertha Wisecarver is able to be up and around after a long siege of the rheumatism.

Several of the young people from this vicinity attended the dance at Mr. Kudrna's last Saturday night.

Otto Skjelver shd. ped his fat cattle Tuesday.

Mr. Marker is quite sick again.

Hamp Wisecarver was in this vicinity Tuesday buying eggs.

During the strong wind last Sunday a board blew off of Bergeman's barn and hit him on the head, cutting quite a severe gash.

A heavy rain visited this locality last Sunday; three and one half inches was registered on F. E. Payne's water gauge.

Wheat is looking excellent. Oats have been retarded some by the cool weather. No corn has been planted yet.

C. M. Wilson purchased a horse from Elmer Fogg Tuesday.

Ed Brethauer traded horses one day this week with Roy Wilson.

C. H. Wilson was transacting business at Red Cloud last Saturday.

Grataps J. A. Lockhart is attending court at Red Cloud this week.

George Hoffelbower closed a very successful term of school at Catherton last Friday.

### Bladen.

Quite a hard rain fell here last Sunday, accompanied by a hard wind which blew down several wind mills in this vicinity.

H. B. Boyd and H. C. Turner shipped two cars of cattle to St. Joe last Sunday. They accompanied them to that place.

Mrs. George Newhouse and children returned home Tuesday after visiting her parents for several days.

Mrs. Wm. Staley and Mrs. L. Boyd, went to Fairfield last Tuesday to visit Mrs. Staley's mother, Mrs. True.

Mrs. N. Springer and son Bliss drove to Blue Hill last Friday.

Mrs. Joe Wildersheim went to Norman last Saturday to visit her parents. She drove back Wednesday, accompanied by her mother, Mrs. Casambers.

Mr. and Mrs. John Kropp and Mrs. Easterly went to DeWitt last Tuesday, to attend the wedding John Soucheck and Miss Warner. John is a brother of Mrs. Kropp, and Mrs. Easterly.

Miss Marker, the teacher of the Primary room, was unable to get back Sunday on account of the storm. Miss Grace Reed taught during her absence.

Frank Wheat has brick hauled for the foundation for his new dwelling east of Mr. Denney's.

### Guide Rock.

T. J. Muloney is now able to hobble about on crutches.

Mrs. Melissa Lambert has completed her school in the McNatt district.

Chas. Darwin was over from Jewell county yesterday.

A number of people from Guide Rock attended the funeral of Miss Gertrude Kaley at Red Cloud Tuesday.  
Lewis Smith, living north of Guide Rock, was thrown from his horse Sunday and his leg was broken by the fall. The Kensington club went to Red

Cloud Wednesday where they were entertained by Mrs. E. S. Garber.

Mrs. Clarence Waldo of Bloomington has returned home after a short visit with her grandmother, Mrs. H. E. Rich.

Work on the rural telephone lines is progressing rapidly.

### Esbon.

Rain is still the order of the day.

Abe and George Michael's windmills were blown down Sunday evening.

Eliass Eotigraph is building a new addition to his house.

The Michael and Houghtaling boys were wolf-hunting Monday afternoon. They saw no wolves, but shot a crane measuring 4 feet from tip to tip.

Howard Houghtaling has his millet ground plowed and is ready to plant the seed.

Wheat and alfalfa are looking fine, but grass is growing slowly.

George Michael has some millet seed for sale.

### Red Cloud-Lebanon Line.

The Red Cloud and Lebanon Mutual Telephone companies have been consolidated and will have a line twenty-three miles in length. Enough money has been subscribed to build the line, with 4 inch top poles twenty-foot high. Subscribers are notified that money or 90 day notes for their portions must be paid inside of fifteen days, so that work may begin. After May 15 no more charter members will be taken in, and the membership fee will be raised from \$10 to a sum considerably higher. Money or notes may be deposited with the Peoples Bank of Red Cloud. The officers of the consolidated company are: David Bell, president; S. N. Potter, vice president; V. H. Serivner, secretary; M. A. Cole and G. Graham, treasurers; and six trustees distributed along the line.

### \$45 California and Back.

April 23 to May 1, inclusive, tickets on sale via the Burlington route to San Francisco and Los Angeles and return at \$45. This is less than the regular one way rate.  
No more delightful outing can be imagined. The trip is made at the time of the year when traveling is a pleasure and the climate of California at its best.  
Attractive diverse routes are offered as well as liberal stopover privileges and return limit.  
Folder giving details mailed free on request. Our agent can give you any further information that may be desired—J. Francis, General passenger agent, Omaha.

### Worlds Fair Rates.

Tickets to St. Louis and return, good all summer, \$23 15.  
On and after April 25, sixty day tickets, \$19 30  
On and after April 27, ten day tickets, \$17 35.

For full information about train service ask the ticket agent.

Now is the time to take a spring tonic to purify the blood, cleanse the liver and kidneys of all impurities. Hollister's Rocky Mountain tea will do the business. 35 cents. Tea or tablets. —C. L. Cutting.

### WALKING IN CIRCLES.

Why People Lost in Fog or Forest Do Not Go Straight On.

It is a matter of common knowledge that when a man is walking blindfolded or is lost in a fog or in some unknown forest or desert instead of walking straight he has always a tendency to work round in a circle. The most commonly accepted explanation of this curious fact is the slight inequality of a man's legs. The result of one limb being longer than the other will naturally be that a person will unconsciously take a longer step with the longer limb, and consequently will trend to the right or to the left, according as the left or right is the longer, unless the tendency to deviation is corrected by the eye.

This explanation is supported by the fact that in the enormous majority of cases the human legs are proved to be of unequal length. The careful measurements of a series of skeletons showed that no less than 99 per cent

This beautiful gravy ladle is one of the

"Oneida Community Quality"

pieces of silver-plated tableware that are famous for possessing the



originality, the art and the finish of the best "Sterling." It is made in the plate heavier than triple, called "Triple-plus," and is guaranteed for twenty-five years. The Oneida Community's Avalon pattern with its beautiful French gray finish is the most perfect reproduction of "Sterling" that has ever been attempted. It is sold for about the price of ordinary plate. We will be glad to tell you more about "Oneida Community Quality" silverware

and to show you many rich and beautiful sets that make refined and lasting gifts.

For Sale by Newhouse Bros.

Had the lower limbs unequal in length; 25 per cent had the right limb longer than the left, while in 55 per cent the left leg was the longer. The left leg being, therefore, more often the longer, it is to be expected that the inclination should take place more frequently to the right than to the left, and this conclusion is quite borne out by observations made on a number of persons when walking blindfolded.

### KOREAN HOUSES.

They Are Comfortable Neither in Summer Nor Winter.

The Korean style of architecture is suited to anything but an extreme climate such as prevails there. During the winter months it is very cold. The houses are made of bamboo framework, plastered within and without with adobe mud. The roof is thatched with rice straw, which is weather proof. The inside may be made into one room by the sliding back of a screenlike partition. Just why these were introduced it is impossible to say, for they are but rarely used, as privacy is never desired in Korea. This open space becomes the living room, and even when travelers are passing along and must halt for the night they are invited to share a common sleeping place on the floor with the entire family. The discomfort of such an experience is extreme during the summer. In the kitchen, which is just without the living room, there is located a most curious kind of stove. From this clay pipes extend under the floor to the living room. They warm the house summer and winter alike.

for it has never entered their minds that some means could be devised whereby the heat could be turned off from the other quarters.—Housekeeper.

### HAIRS OF THE NETTLE.

The Reason They Sting So When They Prick the Flesh.

The stinging hairs of the common nettle, which can easily be seen by the naked eye, stand out under the microscope as rigid, transparent, tubular prickles, highly polished and exquisitely pointed. At their bases these hairs are furnished with bulbous reservoirs, which are charged with formic acid, an acrid, poisonous fluid, which is discharged into the wound after the sharp points have pierced the skin.

Mr. Curtis, in his "Flora," gives this graphic description of the process: "Placing the foot stalk of a nettle leaf on the stage of a microscope, I pressed the bulb with a blunt pin and found a liquid ascend in the prickle, as quicksilver does when a warm hand is applied to the bulb of a thermometer. I saw the liquid ascend and flow from its extremity. I was the more anxious to see this, as I fancied the poison might proceed from an aperture in the side of the sting near its point, and here it appears to be placed rather than quite at the end, that it may not take off from its necessary sharpness.

One Done, the Other Not Begun.  
Primus (looking up from Darwin's celebrated work)—You're an evolution of a monkey. Secundus—You haven't started yet.—Yale Record.

DR.

# PRICES' CREAM BAKING POWDER

Greatest Aid to Cookery

With least labor and trouble it makes hot-breads, biscuit and cakes of finest flavor, light, sweet, appetizing and assuredly digestible and wholesome.