



"Eternal Vigilance is the Price of Liberty," and One Dollar a year is the Price of The Chief.

Vol. 17.

RED CLOUD, WEBSTER COUNTY, NEB., FRIDAY, MAY 30, 1890.

No. 44.

+ McNitt & Galusha, +

Men's Cheap Suits.

they offer you an

ALL WOOL SUIT!

For same money that other dealers sell you Satisfactory suits for.

In Men's Pants

they sell a pant for

+ \$2.50 +

that you have been paying 3.00 for.

+ The leaders

Boys AND Children's DEPARTMENT.

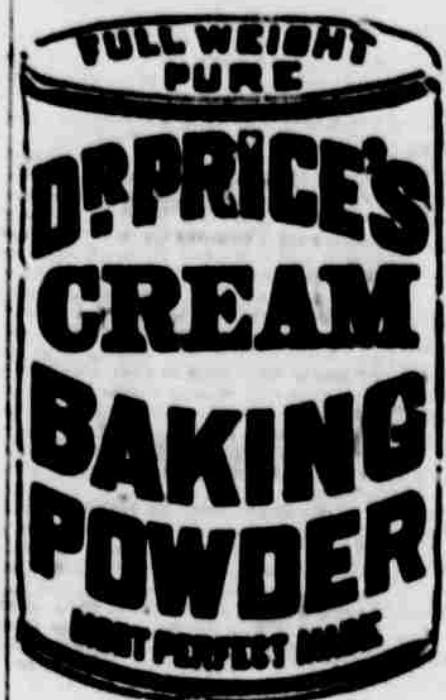
Their stock of Boys' and Children's wear is simply large consisting of the best in the land and a line of cheap stuff that suits the closest buyer.

+ In Bargains.

Men's Fine Suits.

In this Line they Show the Largest, Best Fitting Handsomest **SELECTIONS!** That can be found in any retail store.

Their display of Fine suits in **Patent Shoulders** Are elegant and the only ready made clothing in the Country that is perfectly made.



Its superior excellence proved in millions of loaves of bread has a quarter of a century. It is used by the United States government. It is used by the heads of the great institutions as the Standard, Purist, and most healthful. Dr. Price's Cream Baking Powder does not contain arsenic, lime, or alum. Sold only in cans. **PRICE BAKING POWDER CO. NEW YORK. CHICAGO. ST. LOUIS.**

Farmers and the Census.
The census year began June 1, 1889, and ends May 31, 1890. Each state has from one to eleven supervisors' districts. There are 175 supervisors in all. There are 42,000 enumerators, who in all parts of the country will begin their work Monday morning, June 2, 1890. Every farm will be visited before June 30, and the following questions will be asked, keeping in mind that the figures you are to give nearly all pertain to the crops of 1889, and not to the growing crops of 1890:

1 Your name as occupant of the farm
2 Are you owner, renter for money, or for share of the crops of the farm? (3) Are you white or black? 4 Number of acres of land, improved and unimproved. 5 Acres irrigated. 6 Number of artesian wells flowing. 7 Value of farm, buildings, implements, machinery, and live stock. 8 Fences: Cost of building and repairing. 9 Cost of fertilizers. 10 Labor: Amounts paid for labor, including board, weeks of hired labor, white or black. 11 Products: Estimated value of all farm productions sold, consumed, or on hand for 1889. 12 Forestry: Amount of wood cut, and value of all forest products sold. 13 Grasslands: Acres of each kind of grassland cut for hay or pastured, tons of hay and straw sold, clover and grass seeds produced and sold, silos and their capacity. 14 Sugar Cane, sorghum, maple, and beet, sugar and molasses, acres, product and value of each. 15 Cattle: Breeds. Acres. 16 Cereals: Barley, buckwheat, Indian corn, oats, rye, wheat, acres, crop, amount of each sold and consumed, and value. 17 Rice: Acres, crop, and value. 18 Tobacco: Acres, crop, amount sold and value. 19 Peas and Beans: Bushels, and value of crop sold. 20 Potatoes: Acres, bushels, and value. 21 Hops: Acres, pounds, and value. 22 Fibers: Cotton, flax, and hemp; acres, crop, and value. 23 Broom Corn: Acres, pounds, and value. 24 Live Stock: Horses, mules and asses; number on hand June 1, 1889, number foaled in 1889, number sold in 1889, number died in 1889. 25 Sheep: Number on hand June 1, 1889, of "Sew wool" "long wool" "all other"; number of lambs dropped in 1889, "spring lambs" sold in 1889, value in 1889, other than "spring lambs," slaughtered for use on farm in 1889, killed by dogs in 1889, died from other causes in 1889. 26 Wool: Shorn spring of 1889 and fall of 1889. 27 Goats: Number of Angora and common. 28 Dogs: On farm June 1, 1890. 29 Neat Cattle:

Working oxen, milk cows, and other cattle on hand June 1, 1890, number of pure bred, grade and common; calves dropped in 1889; cattle sold in 1889, slaughtered for use on the farm, and died in 1889. 30 Dairy: Milk—total gallons produced on farm; sold to families, sent to creamery or factory; used on farm, including for butter or cheese; used on farm in raising cream for sale, including for creamery or factory. Butter—pounds made on farm and sold in 1889. Cream—quarts sent to creamery or factory; sold other than to creamery or factory. Cheese—pounds made on farm and sold in 1889. 31 Swine: Number on hand June 1, 1890, sold in 1889, consumed on farm and died in 1889. 32 Poultry: Number each of chickens, turkeys, geese, and ducks on hand June 1, 1889; value of all poultry products sold, eggs produced, sold, and value in 1889. 33 Bees: Number of stands, pounds of honey and wax produced, and value. 34 Oranges: Field crop—number of acres, bushels produced and sold, and value. 35 Potatoes: Sweet and Irish, bushels produced and sold. 36 Market Gardens and Small Fruits: Number of acres in vegetables, blackberries, raspberries, cranberries, strawberries, and other small fruits, and total value of products in 1889. 37 Vegetables and Fruits for Canning: Number of acres, and products, in bushels, of peas and beans, green corn, tomatoes, other vegetables and fruits. 38 Orchards: Apples, apricots, cherries, peaches, pears, plums, and prunes, and other orchard fruits, in each the number of acres, crop in 1889, number of bearing trees, number of young trees not bearing, and value of all orchard products sold. 39 Vineyards: Number of acres in vines bearing and in young vines not bearing; products of grapes and raisins, and value in 1889.

Taylor's Circus.
Taylor's circus yesterday afternoon played a good audience notwithstanding that the weather was very threatening, and before the entertainment was over it rained quite hard. The show is a good one and gives the best of satisfaction to those who see it. They have some of that Hornum not Foreign looking better. The company is a nice looking lot of people and give a clean show. In the evening the tent was filled with a very enthusiastic audience and when the Foreman brothers, acrobats, Chas. Watson hurdle rider, and M. M. Nelson made their appearance were greeted with loud applause. No circus ever gave a better or more entertaining show in our city, and when the price is taken into consideration one wonders how Taylor can afford it. Mr Taylor has sent so many people to Nebraska City will always welcome him with a full house.—Nebraska City Free Press. Will exhibit at Red Cloud, Tuesday, June 10.

An Encouraging Word to Farmers.
Over production of one farm products, too much wheat, oats, corn, too many cattle, hogs, and sheep, is now the cry. We produce more than our own people consume, and foreigners will only take our surplus at their own price.
Is there any light ahead? Yes, a little. Nearly all of the cheap government lands have been sold, and western migration for homestead and cheap land is stopped. Our population is increasing at the rate of 2,200,000 a year, and in less than ten years a healthy home demand will more than overtake production.
Then the great bearing factory, which but the first successful Grain Binder upon the market, and has always so now led the way to economical methods of harvesting grain and grass, is still at it more largely and extensively than was endeavoring to help the farmers to make and save money, while helping themselves by furnishing the constantly improved Bearing Binders and Mowers.
...Savages expect to include honey by drinking the blood of their beaver enemies. A more enlightened method of vitalizing the blood is by taking Ayer's Serravallo. It tones up the nerves and gives strength and fortitude to endure the trials of life.

McNITT & GALUSHA.

E. CLARK President, Albany, N.Y., J. A. TULLY, Vice-President
Robt. V. SHIRRY, Treasurer.

NEBRASKA & KANSAS.
FARM LOAN CO.,
PAID UP CAPITAL, \$50,000.
Red Cloud, Neb. Albany, New York.

DIRECTORS:
H. Clarke, Albany, New York Geo R. Beach, Balston Spa N.Y.
W. H. Robeson, Albany, N. Y. E. S. Francis, Pittsfield, Mass.
R. V. Shirry D. M. Platt K. W. Highland. J. A. Tullys M. B. McNitt
NO EYLCANED.

On improved farms in Nebraska and Kansas. Money furnished as soon as the security is approved. Principal and interest payable in Red Cloud

THE PIONEER Feed, Sale and Livery Barn!

F. N. RICHARDSON, Prop, Red Cloud.
We have more hay and more corn, more oats, and more barn (all of which we purchased when prices were ay down) than any firm in town, there's we R prepared 2 give U lower BSts than any firm between the 2 oceans, Boarding by the day, week or month. We do not brag of our horsemanship. Stock in our care shows their keeping. Call on us at the old reliable barn back of Postoffice and be convinced that what we tell you is true.

Hacker & Parker, THE g R O c E R s
RED CLOUD, NEB

J. H. BAILEY, C. B. CRONE.
BAILEY & CRONE,
Abstracters, Real Estate and Farm Loan Agents.
RED CLOUD, NEBRASKA.

Abstracts of title furnished accurately and promptly. Satisfaction Guaranteed. \$10,000 bond fil

S. F. SPOKESFIELD,
—DEALER IN—

Dry Goods, Groceries, Boots, Shoes, &c., will be found in the "Old Chicago Store" in Red Cloud Nat'l bank block.

WARNER & WOLFANGER,
PROPRIETORS OF

Cincinnati Boot and Shoe Store
We have just received our large stock of Spring Goods and sell a custom made plow shoe for 1.25, best ever on 4 out of Red Cloud for the money
We have also ladies fine double button shoe, also in pair for \$1.75. Every pair warranted. For children's shoes we have the standard brands the Little Giant and also the Watery school shoe. These are the best in the world. Examine our stock before purchasing elsewhere.