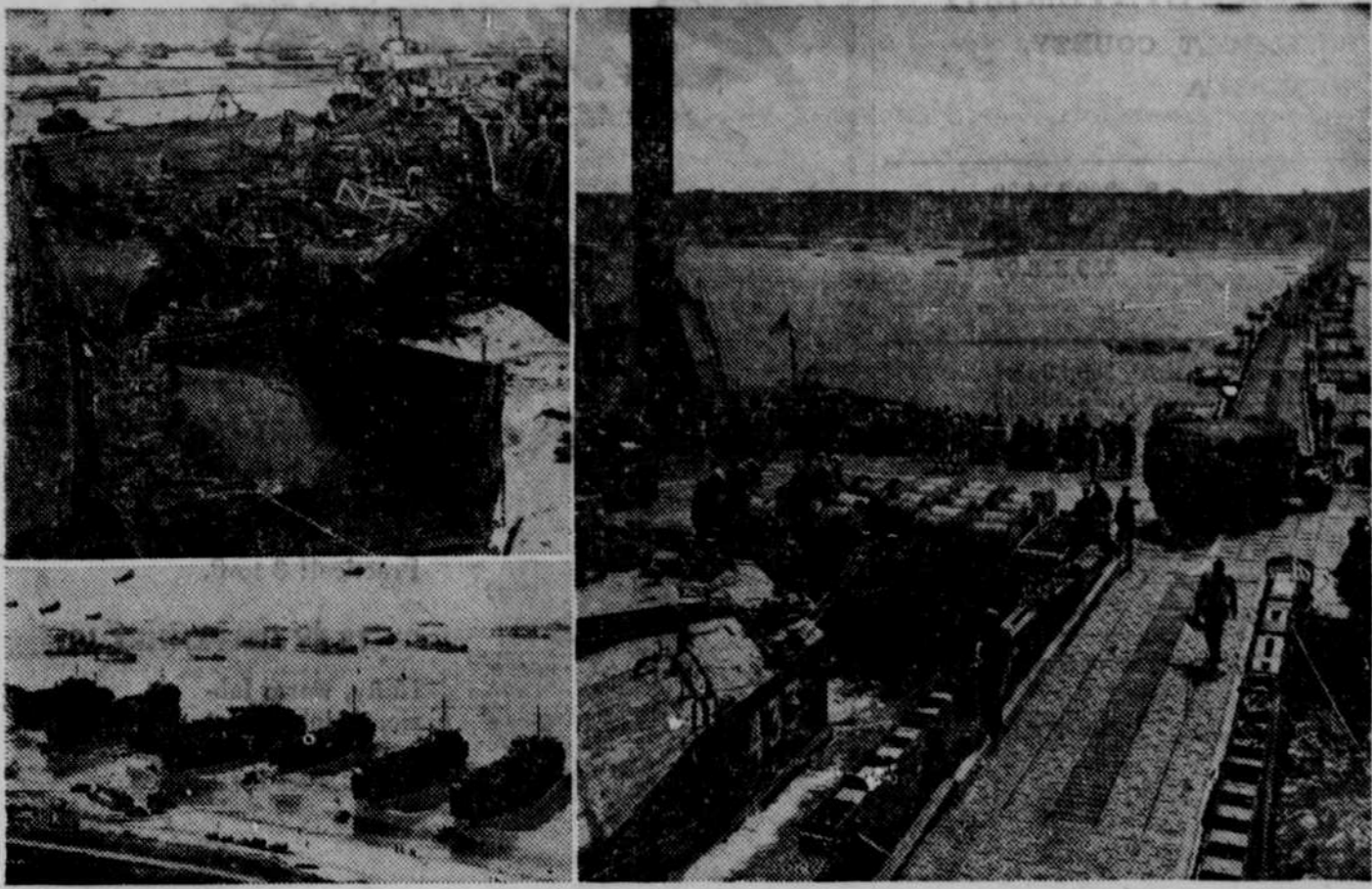


## Floating Invasion Docks Destroyed by Storm



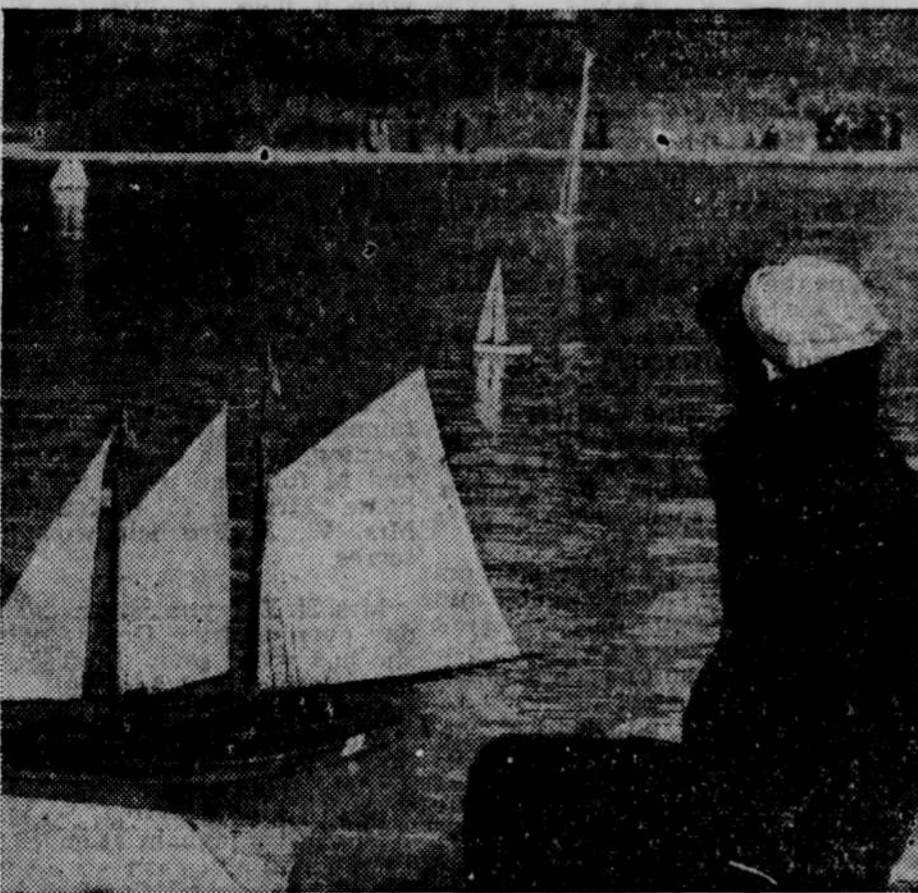
Lower left shows panoramic view of Omaha beach before the U. S. Mulberry invasion docks were set up. Right shows how all hands pitch in to keep the flow of supplies going in the U. S. Mulberry off Colleville, France. The Mulberry (top, left), shown wrecked by the terrific channel storm which broke directly after completion of the Mulberry.

## Commanded U. S. Navy Units in Biggest Victory



These are the three men who were in charge of the United States fleets that battled the Japanese, with such disastrous consequences to the Nipponese. Shown left to right are Rear Adm. Russell S. Berkey, U.S.N., Rear Adm. G. L. Weyler, U.S.N., and Rear Adm. Robert Ward Hayler, U.S.N. Latest tally indicates that 58 Japanese ships were destroyed, seriously damaged and hit, with a United States loss of six ships sunk. The loss in Japanese lives was believed to have been the greatest in history.

### Salt Water Sailor on Leave



Back to the sea goes this sailor, visiting Manhattan during shore leave. He spends his time ashore watching a miniature sailboat race in the Central park pond, in New York city. Among the sea-going men, the miniature boats in the pond prove one of the biggest drawing cards for Uncle Sam's tars when visiting the city. Many of the boats entered in races are sailor-owned.

### They Return to Philippines



Left: Gen. Douglas MacArthur as he broadcasts to the Philippines that the Americans landed on Leyte island and that he has returned. Right: Vice Adm. Thomas Kinkaid (right), and Lieut. Gen. Walter Krueger (center), as they discuss Philippine invasion operations aboard the flagship in Philippine waters.

### Returns to Islands



Sergie Osmena, new president of the Philippines, embarks at New Guinea for return to his native land. He has moved the Philippine government from Washington, D. C., to the islands, following their recapture by General MacArthur's troops.

### India-Burma Chief



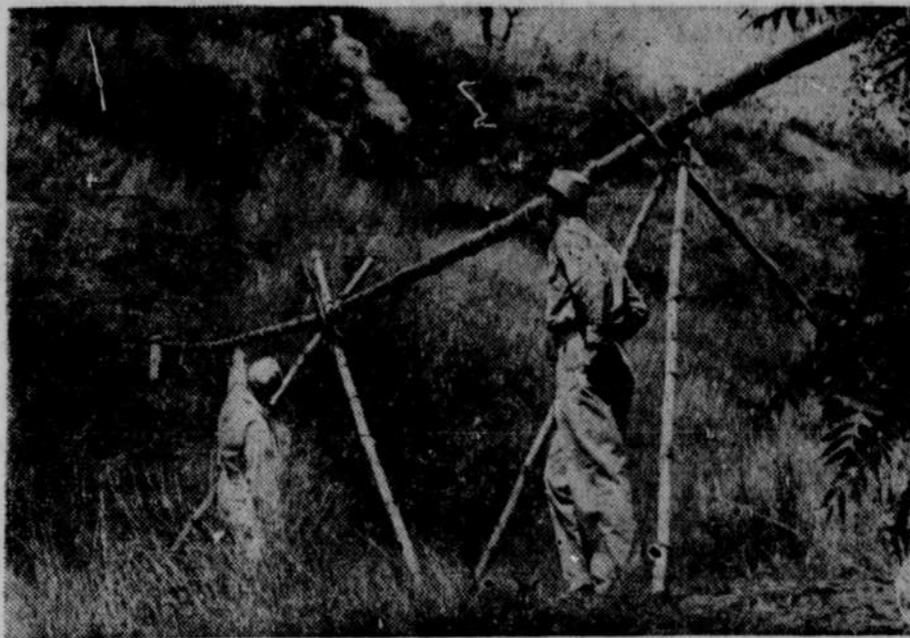
Lieut. Gen. Daniel I. Sultan has been selected to relieve Gen. Joseph Stilwell as commander of all U. S. forces in the India-Burma theater of operations.

## Aviation Conference Underway



Adolph Berle, assistant secretary of state, and temporary chairman, is shown as he made the opening address of the International Civil Aviation conference held in Chicago. Delegates representing 50 countries met in first conference of its kind, hoping to work out a plan for world air transportation. The conference has dedicated itself to world-wide peacetime aviation development.

## GIs Build Bamboo Water Line



Bamboo water line is supported across a defile by trestle also made of bamboo. This improvised line, in Yunnan province of China, the end of the lines for American army supplies, released hundreds of Chinese coolies from carrying water in order that they could handle other essential war supplies for American and Chinese forces.

## Gain by Gain Toward Victory



This map shows the steps taken by Gen. Douglas MacArthur as he kept his vow to return to the Philippines. On the second day of January, 1944, he made his first major leap-frog jump along the coast of New Guinea from Lae to Saidor. The map shows the succeeding operations, climaxing in the invasion of the Philippines.

## Awarded Nobel Medicine Prizes



All 1944 Nobel prizes for medicine went to the United States, the Nobel committee has announced. Dr. Joseph Erlanger, St. Louis, Mo., (left); Dr. Edward A. Doisy, St. Louis, Mo., (center); and Dr. Herbert S. Gasser, of the Rockefeller Institute, New York city, were awarded the prizes for medical research work.

## Guest of Air Force



Hot dogs and raisin pie were served to this French lad by members of the U. S. army Ninth air force service command unit in France. Mess call always finds a number of the French children lined up for chow with the GIs. Thousands of French children have to be fed.

## Commands Invasion



Maj. Gen. James L. Bradley, commanding general of the 96th Infantry division, leads his division in the invasion of Philippines. The troops received extensive training for the present campaign in the Hawaiian islands.

## Crossing the Alps



Typical of the terrain over which our forces must battle in northern Italy is this jagged pass at Della Stelvio. These are the Austrian Alps on the Italian-German border. The man-angled white strip is the Burma pass-like road.

## Waiting for Flush



Dog, Joe Contender, and his hunter, working like two halves of a well-oiled machine, stand by a covert. The dog is in a point and the hunter is ready for his shot.

## Pilgrims Crawl to Worship In Far-Off Mysterious Tibet

What is without doubt the most amazing procession in the world takes place every year outside the Kum Bum lamasery in Tibet. For days before the annual Butter Festival, thousands of pilgrims move slowly round the building 10 abreast. First they throw themselves full length on the ground and with outstretched fingers make a mark in the dust. Then they stand upright, shuffle to the mark, and lie prostrate again. This movement they repeat unendingly for hours on end, never seeming to tire and every few minutes more pilgrims add themselves to the end of the procession until the whole scene, viewed from a distance, looks like a rolling undulating wave.



**CHEST COLD TIGHTNESS**  
**QUICKLY RELIEVED** When chest muscles feel "tight" and sore, due to a cold, rub on Mentholatum. Two vital actions bring quick relief: (1) Mentholatum stimulates surface circulation—helping to "loosen" the tight muscles. (2) Soothing medicinal vapors comfort irritated mucous membranes of nose and throat. Get Mentholatum. Jars, tubes, 30¢.

**MENTHOLATUM**

## SNAPPY FACTS ABOUT RUBBER

Many rubber items in common use are shaped at the factories in giant extruding machines, which in general appearance and action are much like the ordinary kitchen meat grinder. Rubber, mixed with chemicals, is extruded in any shape desired—round, square, rectangular or tubular.

The critical operating temperature in a tire is about 240 degrees at its hottest point, and is reached quicker in a synthetic rubber tire than in one made of natural rubber. Speed, load and inflation are chief factors in developing tire heat, which accounts for tire users being cautioned about respecting them.

*Joseph Shaw*

*In war or peace*

**B.F. Goodrich**

**FIRST IN RUBBER**

**\$25 A DAY** Making marble and plastics in your back yard. Amazing! Mail 10¢ and 3¢ stamp for folder. Peace-Time Manufacturing Co. Box 6169, Metro Station, Los Angeles 55, Calif.

**CHILDREN'S COLDS' COUGHING** quickly relieved by Penetro—Grandma's old-time mutton suet idea developed by modern science into a counter-irritant, vaporizing salve that brings quick, comforting relief. 25¢, double size 35¢.

**PENETRO**  
 BASE CONTAINS MUTTON SUET

## Pull the Trigger on Lazy "Innards"



WHEN CONSTIPATION makes you feel punk as the dickens, brings on stomach upset, sour taste, gassy discomfort, take Dr. Caldwell's famous medicine to quickly pull the trigger on lazy "innards", and help you feel bright and chipper again.

DR. CALDWELL'S is the wonderful senna laxative contained in good old Syrup Pepsin to make it so easy to take.

MANY DOCTORS use Pepsin preparations in prescriptions to make the medicine more palatable and agreeable to take. So be sure your laxative is contained in Syrup Pepsin.

INSIST ON DR. CALDWELL'S—the favorite of millions for 50 years, and feel that wholesome relief from constipation. Even finicky children love it.

CAUTION: Use only as directed.

**DR. CALDWELL'S**  
**SENNAXATIVE**  
 CONTAINED IN SYRUP PEPSIN