

### Colonial Salt Box, Pan Holder Rack

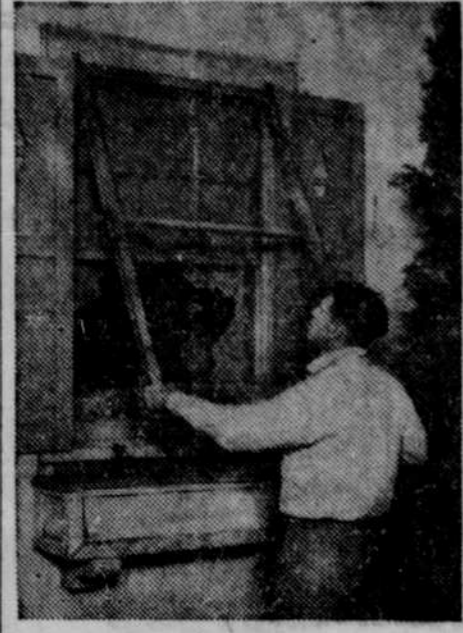


HERE is a pair of gifts that will bring joy to any homemaker. The salt box has the graceful proportions of those used in Colonial kitchens, and the rack with cup hooks screwed in place for hot pan holders is designed to harmonize with the box.

Both box and rack are easy to cut out of plywood or scraps of thin lumber—either by hand with a coping saw or with a jig saw. The quaint stencil design may be applied right on the wood with wax crayon and then shellacked to fix the color.

Form for Mrs. Ruth Wyeth Spears, Bedford Hills, New York. Includes fields for name, address, and pattern No. 251.

### How to Save Heat—



SEE THAT ALL storm sashes fit tightly. Keep the storm windows closed as much as possible.



SEAL UP ALL air leaks with compounds made for the purpose. Cracks in the smokepipe and the joining of the pipe and chimney should be filled.

### CLASSIFIED DEPARTMENT

#### Stove & Furnace Repairs

REPAIRS FOR ANY STOVE, FURNACE or BOILER. Prompt Shipments Since 1889. Order Through Your Dealer.

#### Live Stock Commission BYERS BROS & CO.

#### FEATHERS WANTED

DO YOU OWN A FEATHER BED? We also buy new Geese and Duck feathers, quilts, horse hair and furs. Send to FARMERS STORE, Mitchell, So. Dak.

### Coughing COLDS

Relieve Distress This Modern Way. Here is a simple way, Mother, to relieve the coughing misery of your child's cold. At bedtime, rub Vicks VapoRub on the throat, chest and back...

WNU-U 46-44

### SURVEY SHOWS Many Doctors Recommend SCOTT'S!

★ HELPS BUILD STAMINA ★ HELPS BUILD ACTUAL RESISTANCE TO COLDS. Try good-tasting Scott's Emulsion! Contains natural A & D Vitamins that help bring back energy and stamina if there is dietary deficiency of these elements.



AIR FILTERS ON forced air heating systems must be kept clean, or the free circulation of warm air will be impeded.



KEEP SHADES, venetian blinds and drapes drawn at night, and as much as possible during the day. Warm room air chills quickly when it comes in contact with colder window surfaces.



HAVE YOUR FURNACE thoroughly cleaned at the beginning of the cold season. You can do this yourself with a stiff wire brush.

### Production Rate of Coal Mines More Than Doubled Since 1918

It weren't for the efficiency of the highly mechanized coal-mining industry, the fuel situation this year would be a lot more desperate than it is. If we had to depend on 1918 production rates, for instance, we'd just have to shiver through the winter.

## We'll Have to Stretch Fuel If We Want to Keep Warm

Serious Shortages of Coal, Wood and Oil Make Heat-Conserving Practices Necessary for All.

Coal, coke, oil, gas or wood—whatever you burn for fuel—will be short in supply this winter, as they all have been for the last three years. They may be even scarcer. The reason is familiar enough—it's the war. There are fewer men mining coal, or making coke, or cutting wood.

It is estimated that we will be short 38 million tons of coal this winter. Wood will be extremely scarce. So will coke, charcoal and gas—all by-products of these primary fuels.

Nevertheless, nobody needs to be cold. There will be enough fuel to keep everyone warm, if it is intelligently used. This means that all leaks that cause loss of heat will have to be closed.

One way to spread the available coal and wood on an equitable basis among the 45 million families of the nation would be to ration these fuels. This has already been done with oil. But the government believes it can avoid this step.

The heating industry, which includes 35,000 dealers and jobbers and many thousands of manufacturers, is volunteering its help. Drawing on their years of experience with heating problems, many manufacturers have prepared booklets on fuel saving.

The War Production board recently announced that raw materials are being made available for the production of automatic temperature controls—thermostats and similar devices—on the basis that the fuel saved will more than compensate for the small amounts of steel and other materials necessary to make the instruments.

Some of the ways to save fuel are the following recommendations of heating engineers:

ly cleaned. Remove all scale from heating surfaces in furnace or boiler. Clean the stack and chimney. Every two or three weeks be sure all soot and ash is removed from boiler flue surfaces.

Periodically throughout the heating season remove all air from radiators in hot water systems. You can do this by opening the air valves. In a steam heating system make sure the automatic bleed valves are in working order.

Use your fireplace but see that fireplace dampers are closed when not in use.

If the temperature at the bottom of the casing in the vicinity of the cold air return on gravity warm air furnaces gets above 75 degrees, a baffle should be installed in the furnace to eliminate heating of the cold air return.

Keep Air Filters Clean. Air filters on forced air heating systems must be kept clean.

In any warm air system, keep rugs and furniture away from warm air delivery ducts and cold air returns, so that free circulation of air can take place.

Insulate the heating plant if the basement of your home is warmer than the upstairs rooms.

Cut off heat in unused rooms. If rooms are subject to temperatures below freezing, have a plumber drain the radiators.

All glass in both regular and storm window sashes should be tight and should not rattle. Keep the storm sash closed as much as possible.

Experiments of government fuel conservation agencies prove that storm windows are an important aid to fuel saving.

Many people prefer to keep the bedroom windows closed at night and close off the heat supply. This really conserves fuel—and after a few minutes before retiring there will be a sufficient fresh air supply with normal infiltration to last throughout the night.

Keep shades, venetian blinds and drapes drawn at night and as much as possible during the day. Warm room air chills quickly when it comes in contact with colder window surfaces.

Maintain as low a temperature as consistent with health. Uncle Sam figures that you will have to keep your house at 65 degrees, under average conditions, if you are going to have enough fuel to last all winter.

Another factor is the uncertain but huge demand of the armed forces. Great quantities of coal must be shipped to liberated countries, both for American military establishments and for the countries' own utilities.

### SEWING CIRCLE PATTERNS

#### 'Date' Dress Is Slim, Graceful



A Fashion 'Must.' WE KNOW what a "date" dress should have—and this one has everything! A close-fitting waist and peplum—a fashion

"must" this year—and a softly gathered skirt to make you look slim and graceful.

Pattern No. 8711 comes in sizes 12, 14, 16, 18 and 20. Size 14, short sleeves, requires 4 1/4 yards of 39-inch material; three-quarter sleeves, 4 3/4 yards. For this pattern, send 25 cents in coins, your name, address, pattern number and size wanted.

Form for Sewing Circle Pattern Dept., Chicago. Includes fields for name, address, and pattern No. 8711.

#### Accident at Cornerstone Laying Unnerved Hitler

Few ominous experiences have caused the superstitious Hitler more concern than the one that occurred when he was about to lay the cornerstone of a Munich art gallery on October 15, 1933, says Collier's. After the chairman had stated that the ceremony was the "sign and symbol of the future of the Nazi movement," Hitler stepped forward and, in delivering the first blow on the stone, broke the silver hammer in two.

## LET US HELP YOU KEEP YOUR CAR IN SERVICE

### Firestone FACTORY-CONTROLLED RECAPPING

Grade A Quality Camelback Used 6 Reasons Why You Get a Better Job With Firestone Factory-Control Methods

- (1) THOROUGH INSPECTION: Before any work is done, your tire is thoroughly inspected. Any weak spots or nail holes are marked for repair. (2) EXPERT REPAIRING: When repairs are needed, a trained specialist using latest approved methods builds up weakened or broken areas. (3) CONTROLLED BUFFING: The worn tread is precision-buffed for perfect balance. Only a minimum of rubber is removed to provide proper surface. (4) ACCURATE TREADING: New tread rubber of highest quality is carefully applied to the buffed tread base. Care and precision insure a well balanced tire. (5) SCIENTIFIC CURING: Careful scientific control of time and temperatures assures proper toughness and maximum wearing quality of the recap. (6) FINAL INSPECTION: Complete final examination carefully inspects inside and outside of tire. Note sharp, clear tread, ready for thousands of additional miles.



7.00 6.00x16 OTHER SIZES PROPORTIONATELY LOW

NO RATIONING CERTIFICATE REQUIRED PROMPT SERVICE ALWAYS

See Us for the Finest Truck and Tractor Tire Recapping with the Very Best Quality Materials and Workmanship

### GUARANTEED

## SEE YOUR NEARBY FIRESTONE DEALER STORE OR FIRESTONE STORE