

Getting the News Out of Anzio Beachhead



War correspondents covering the fighting fronts must be constantly on the job, interviewing officers and men as they prepare for action and when they return from combat areas. In picture at left War Correspondent Reynolds Packard interviews a member of the crew of a U. S. tank, just back from action at the Anzio-Nettuno beachhead. Center: Delmar Richardson (left), and Halg Nicholson start out for the front in a jeep in the Anzio sector. Right: Pvt. Melvin Diamond tries to talk himself and his pooch into an air ride.

Coiffures for Combat and Comfort



Comfort and the exigencies of combat, rather than convention, dictate the hair styles of our fighting men. Dazzling and sometimes daffy are some of the examples of tonsorial work encountered in fighting zones. Above are a few, photographed aboard a coastguard-manned assault transport in the South Pacific.

Salute to Signalmen



Loneliest soldiers in the British army are the men of the Royal Signals who construct and maintain the longest military telephone system on earth—the 5,000 miles from Algiers to Teheran, Persia. Here two Sinal police greet two signalmen.

Six Colorful and Gay Tea Towels



5244

THE first days of spring are no more colorful than the colors of this gay little canary, done life-size and in bright yellow with flowers of red, green and blue. Each design for tea towels, breakfast cloth or place doilies is 6 by 6 inches. Embroider them in simple line stitch for gifts!

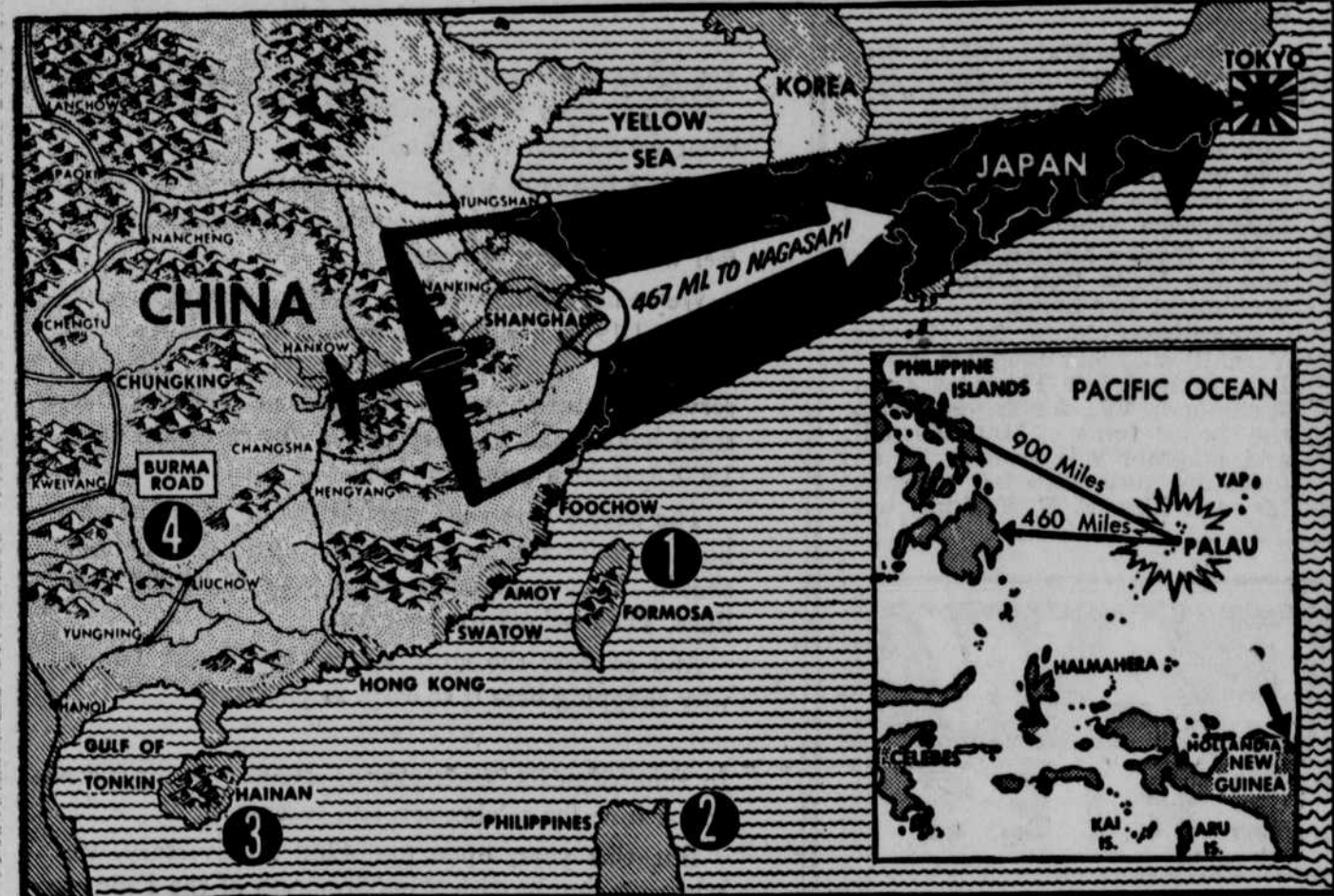
To obtain transfer designs for 6 Canary Towels (Pattern No. 5244) color chart for embroidering, send 16 cents in coin, your name, address and the pattern number.

Due to an unusually large demand and current war conditions, slightly more time is required in filling orders for a few of the most popular pattern numbers.

Send your order to:

SEWING CIRCLE NEEDLEWORK
538 South Wells St. Chicago.
Enclose 15 cents (plus one cent to cover cost of mailing) for Pattern No.
Name
Address

Campaign to Gain Coast Air Bases to Bomb Tokyo



Tokyo by way of the south China coast—that seems to be the major strategy. Figuring in the China coast campaign are, as the map shows (1) Formosa, which has been having invasion jitters, (2) the Philippines, towards which a swift drive appears to be directed, (3) Hainan, often bombed recently, and (4) the center of the battle for China's lifeline.

War Ballot Commission Meets



The United States war ballot commission, authorized by congress to take administrative action under the new federal service men's voting law, meets in the office of the secretary of war for the purpose of formal organization. Left to right, Secretary of Navy Frank Knox; Secretary of War Henry L. Stimson, and Adm. Emory S. Land, administrator of the War Shipping board.

No Race Tracks Here



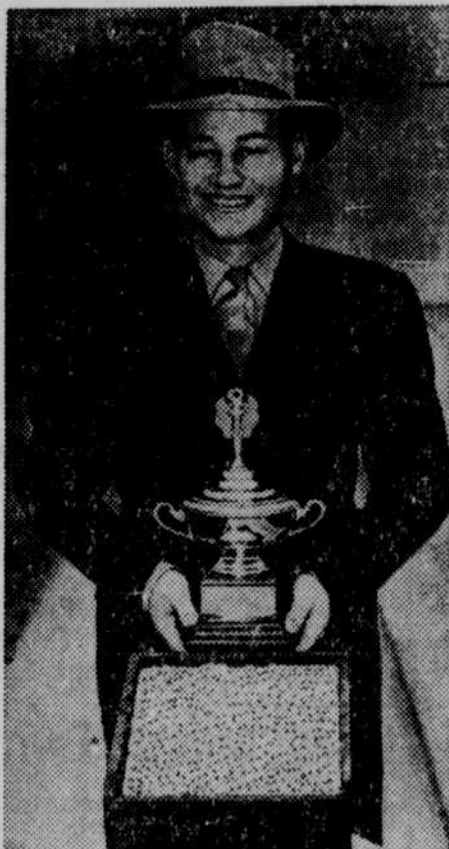
Millionaire sportsman Alfred G. Vanderbilt, right, aboard PT boat in New Guinea area, with Lieut. (jg) James Costigan, center background, and Lieut. (jg) Kester Denman. They have runk four Jap barges and a cargo ship.

Beating Japs at Own Game in Burma



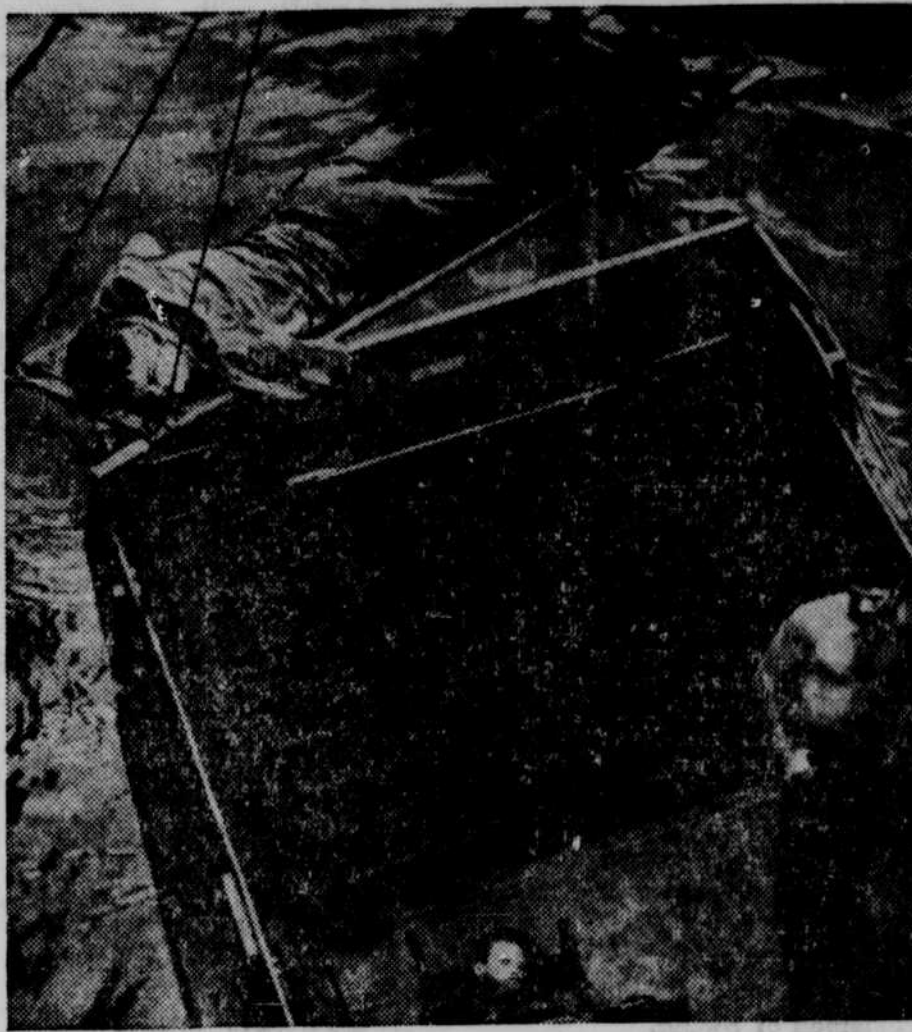
These men, who do not look like the popular conception of the dashing soldier, are members of the jungle fighting outfit which has won fame as "Merrill's Marauders" in the jungles of North Burma. They are licking the Japs at their own game of infiltration and jungle fighting.

'Wheat King'



Smiling proudly from behind his trophy and a sample of his prize-winning product is Leo Lindstrom of Sterling, Colo., who was named national "wheat king" at the Union Stock Yards, Chicago.

One of the First to Fall at Bougainville



Wounded in the initial invasion at Empress Augusta Bay, Bougainville, this American is hoisted aboard a coastguard-manned transport off shore. He was among the marines and coastguardsmen to leave the ship earlier in the morning, to begin the attack.

A 'Long Story'



This 36-foot letter is the answer to a GI's dream. Sent to Pfc. William Pauls, East Orange, N. J., it is made up of cartoons, stories, messages from friends, photos and other items—enough to keep him busy for hours.

Recommends 4-Fs for War Work



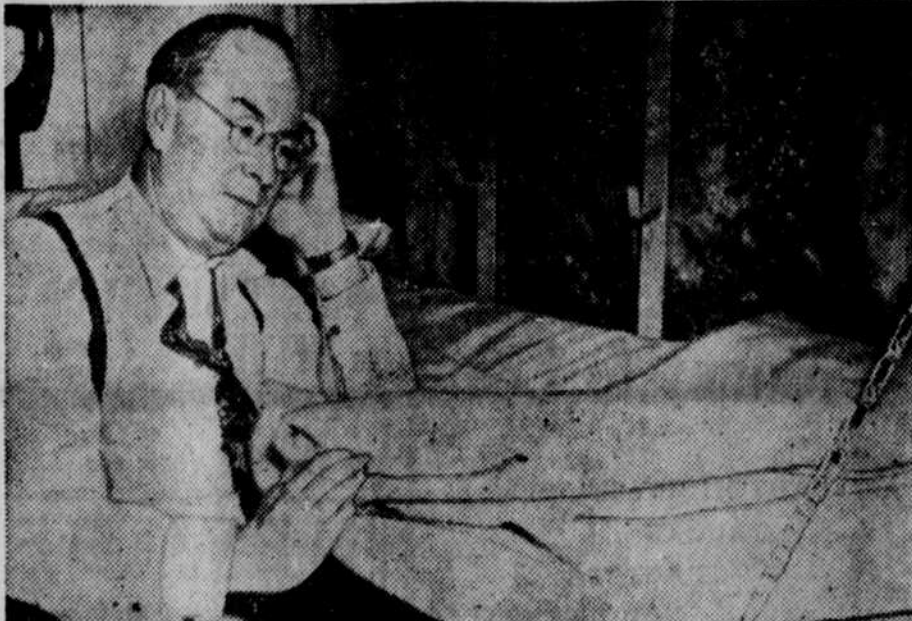
Appearing before a house military affairs committee, Undersecretary of War Robert F. Patterson recommended that 4-Fs not engaged in essential war work be inducted into the army enlisted reserve for assignment to civilian jobs. Photo shows, left, Ralph A. Bard, assistant secretary of navy, talking to Secretary Patterson (right) during the hearing.

Sister Shows How



Sister Elizabeth Kenny demonstrates her miracle of healing before nurses and doctors at a San Francisco hospital. Little Robert Tweedie, six, pins an orchid from his father on her as a tribute.

Small Quarters for a Large Man



It was late, and Donald Nelson, head of WPB, was sleepy, but the bunk assigned to him aboard an LCT (landing craft tank) was so small, apparently never intended for a man of Nelson's height. He spent the night aboard the LCT going from Solomons Island, Md., to Little Creek, Va., with a labor party inspecting East Coast amphibious bases.

Fuel from Salvage



Dr. Ernest Berl, chemist at the Carnegie Institute of Technology, Pittsburgh, Pa., who has a postwar plan for producing gasoline and coal from farm, crop waste, forests and seaweed.

Fly's Wing Movement
The wing of a fly makes 338 movements a second.

Muffins your family will love!

*Prune or Bacon Muffins

Kellogg's ALL-BRAN Muffins
2 tablespoons shortening 1/2 cup milk
1/4 cup sugar 1/2 cup sifted flour
1 egg 1/2 teaspoon salt
1 cup Kellogg's All-Bran 2 1/2 teaspoons baking powder

Blend shortening and sugar thoroughly. Add egg and beat well. Stir in All-Bran and milk. Let soak until most of moisture is taken up. Sift flour with salt and baking powder and add to first mixture. Stir only until flour disappears. Fill greased muffin pans 2/3 full. Bake in hot oven (400° F.) about 30 minutes. Yield: 5 large muffins.
* For prune muffins, add 1/2 cup well-soaked, pitted and chopped prunes to dry ingredients.
* For bacon muffins, add 1/4 cup crisp, diced bacon to dry ingredients.

And remember, too, KELLOGG'S ALL-BRAN by itself is a rich, natural source of the whole grain "protective" food elements—protein, the B vitamins, phosphorus, calcium and iron!

Kellogg's ALL-BRAN

STOP OR GO

The comedy quiz—starring

JOE E. BROWN

THURSDAY NIGHTS
10:30 P.M. E.W.T.

on the entire BLUE network

CONSULT YOUR LOCAL NEWSPAPER

McKESSON & ROBBINS, INC.
CALOX TOOTH POWDER
BEXEL VITAMIN B COMPLEX CAPSULES