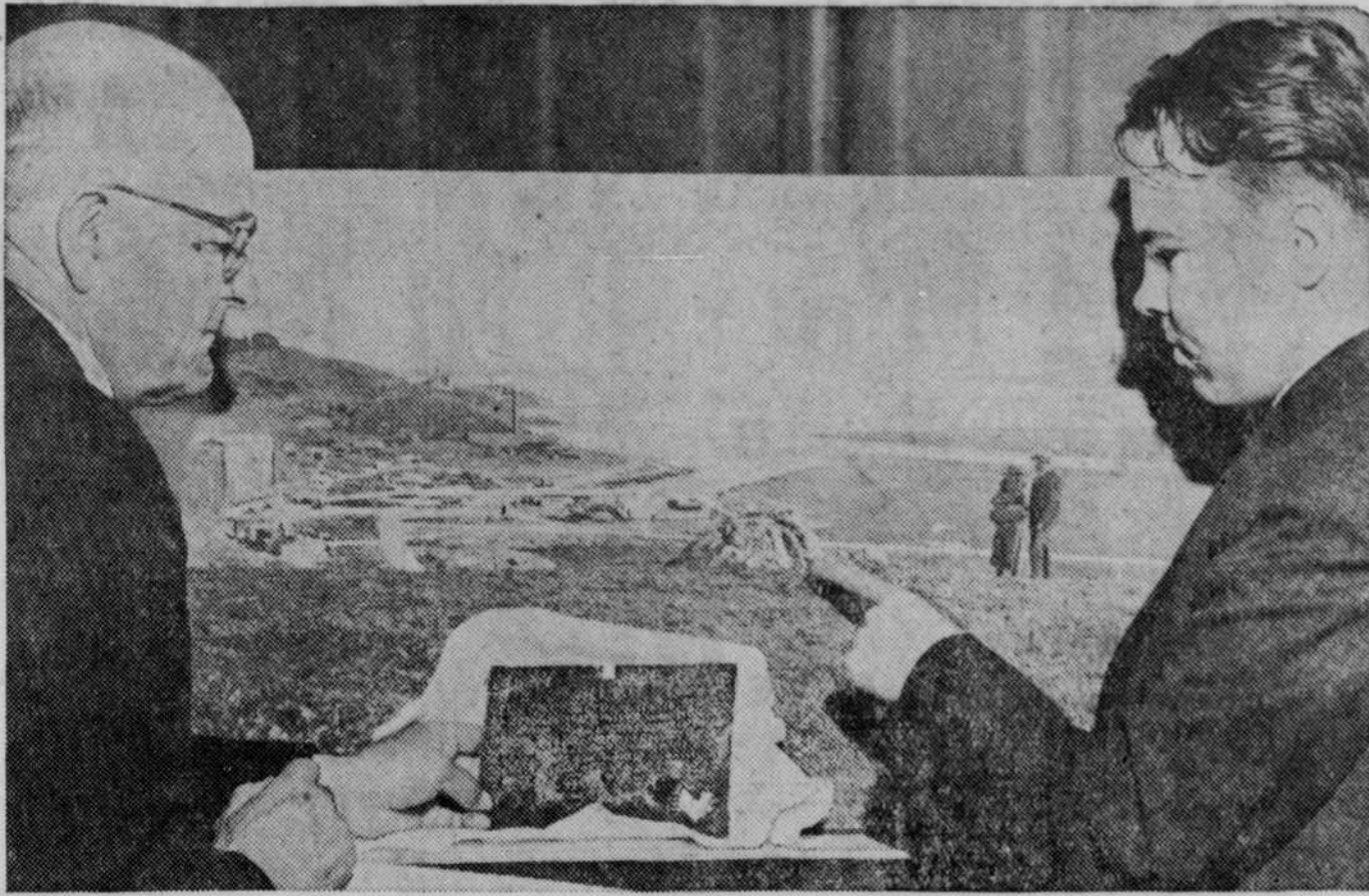
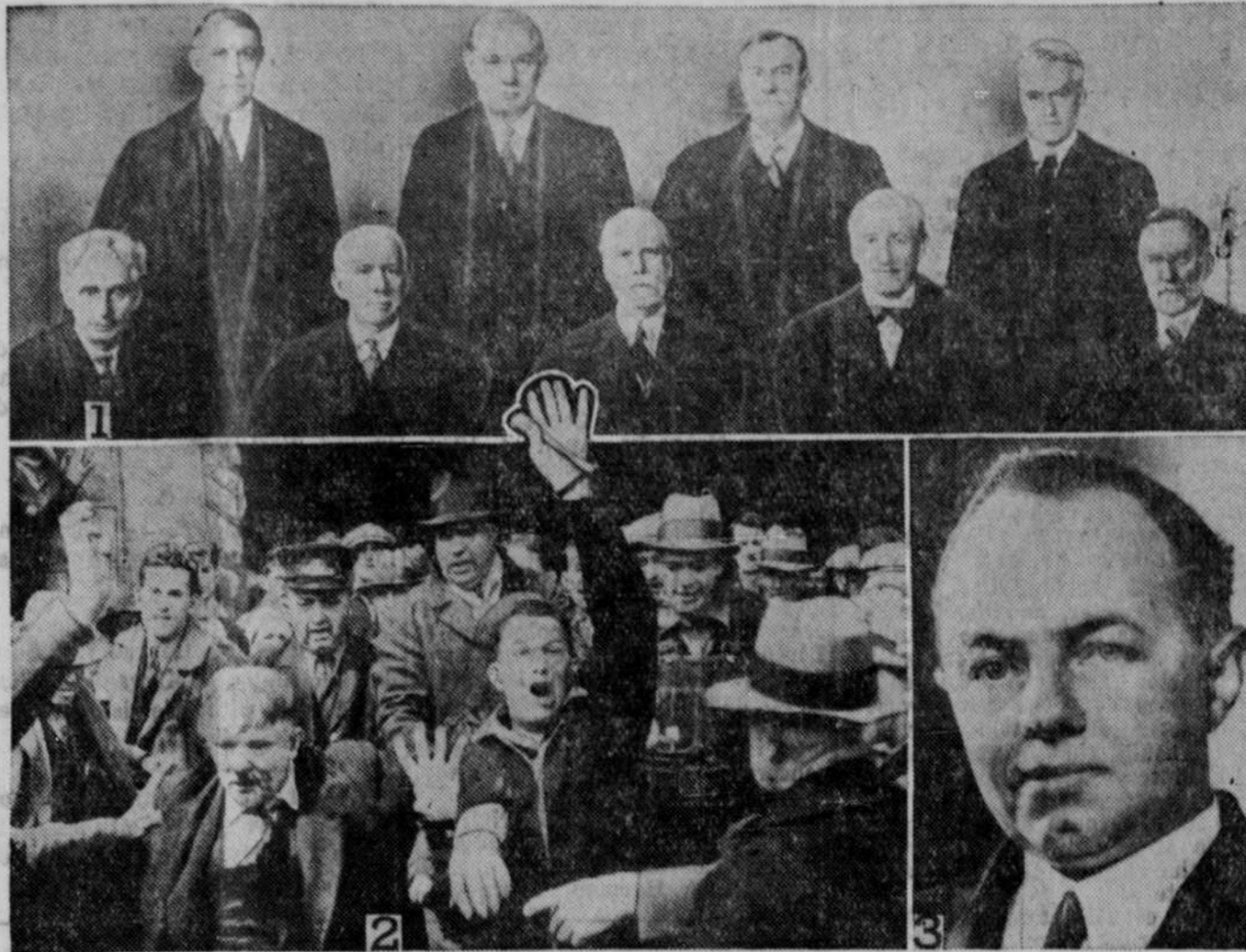


Historical Treasure Found by Store Clerk



Beryle Shinn, twenty-six-year-old department store clerk who accidentally discovered in Marin county, near San Francisco, a small metal plate, subsequently identified as the "plate of brass," a long-sought historical treasure by which Sir Francis Drake claimed California lands for England in 1579. Dr. Herbert F. Bolton of the University of California (left) being shown by Beryle Shinn, the discoverer, the location of the find.

Scenes and Persons in the Current News



1—Members of the Supreme court who recently, in an epochal series of decisions, declared the Wagner national labor relations act constitutional. Left to right (rear), Justices Roberts, Butler, Stone, Cardozo; (front), Brandeis, Van Devanter, Hughes, McReynolds and Sutherland. 2—Strikers being forcibly evicted from the Hershey Chocolate plant by non-strikers and local farmers. 3—Premier Mitchell F. Hepburn of Ontario, who combated efforts of the C. I. O. to get a foothold in Canada in connection with the General Motors strike at Oshawa and forced the resignation of two members of his cabinet who opposed his policy.

POULTRY

SHOULD BREED FOR HIGH-PRICED EGGS

Size as Well as Production Equally Important.

By Dr. W. C. Thompson, Poultry Husbandman, New Jersey College of Agriculture.—WNU Service.

Since big eggs make for increased poultry farm income because of the emphasis placed on size in grading eggs, and since the ability to produce big eggs is heritable, poultrymen should breed for egg size as well as for production and other inherited traits.

Fresh quality table eggs are sold on an egg size quality basis. This means that price returns are, to a large extent at least, based on the egg size quality of respective packs.

The poultry breeder who is interested in improving the average egg size of the yield produced by his pullet layers should remember that there is no significant correlation between the number of eggs that a bird lays and the size of those eggs and that the poultry breeder must select his breeding stock both with regard to the quantity and egg size quality. He should also keep in mind that egg size quality may be very materially increased by a proper introduction of this element into the poultry breeding improvement program.

The nearer the poultryman can come to produce pullet laying flocks which yield eggs of such size and quality as will command first-grade prices, the more profitable will be the egg farming enterprise.

In the practical application of such principles two methods are offered: First, if trapezoidal is being done, pullets which show 60 per cent or more of first-grade eggs, or eggs weighing 24 ounces or more to the dozen should be separately banded with a legband. Future breeders, other things being equal, are best chosen from that group. This involves weighing eggs produced during any 30-day period after three months of production have passed.

According to the second method, suggested when no trapezoidal is being done, the breeding stock is selected with regard to all the characteristics considered to be important, and the matings are made up as usual. In any case, only eggs weighing 24 to 28 ounces per dozen are placed in the incubator.

Figures gathered on several hundred layers indicate that the adoption of the 24-ounce-to-the-dozen minimum, or preferably the 26-ounce-to-the-dozen minimum, for hatching eggs will accomplish distinct improvement in the average egg size of the resultant pullet flocks.

Cites High Standards in Choosing Hatching Eggs

Selecting eggs for hatching according to a definite standard aids materially in improving the size, shape and color of eggs produced on the poultry farm, J. C. Taylor, associate extension poultryman at the New Jersey College of Agriculture, Rutgers university, tells egg producers.

The standard of egg selection for hatching suggested by Taylor is that no egg shall weigh less than 24 ounces to the dozen nor more than 28. "The size," he says, "should be uniform and the shape normal. Do not use eggs which are long, short, round or oddly shaped. The color should also be uniform—no cream colored or other tinted shells in the white eggs and the brown eggs should be of a shade most characteristic of the flock."

The care of eggs before they are placed in the incubator determines to some extent the success of the hatch. Collect the hatching eggs frequently, at least two or three times a day. Store the eggs in a clean, cool room or cellar where the temperature does not go above 55 or 60 degrees Fahrenheit. Be sure that all hatching eggs are turned once a day and do not hold eggs longer than 10 days before putting them in the incubator.

Raising Broiler Birds

The cross of Rhode Island Red hens and Barred Rock males is a popular broiler bird. It is said that they grow faster and are easier to raise than most pure breeds. Broilers are started on a chick starting ration and can be given hard grain after a short time or raised on an all mash feed. A special broiler ration gives well fleshed birds. The loss in dressing broilers ranges between 13 and 14 per cent.

In the Henyard

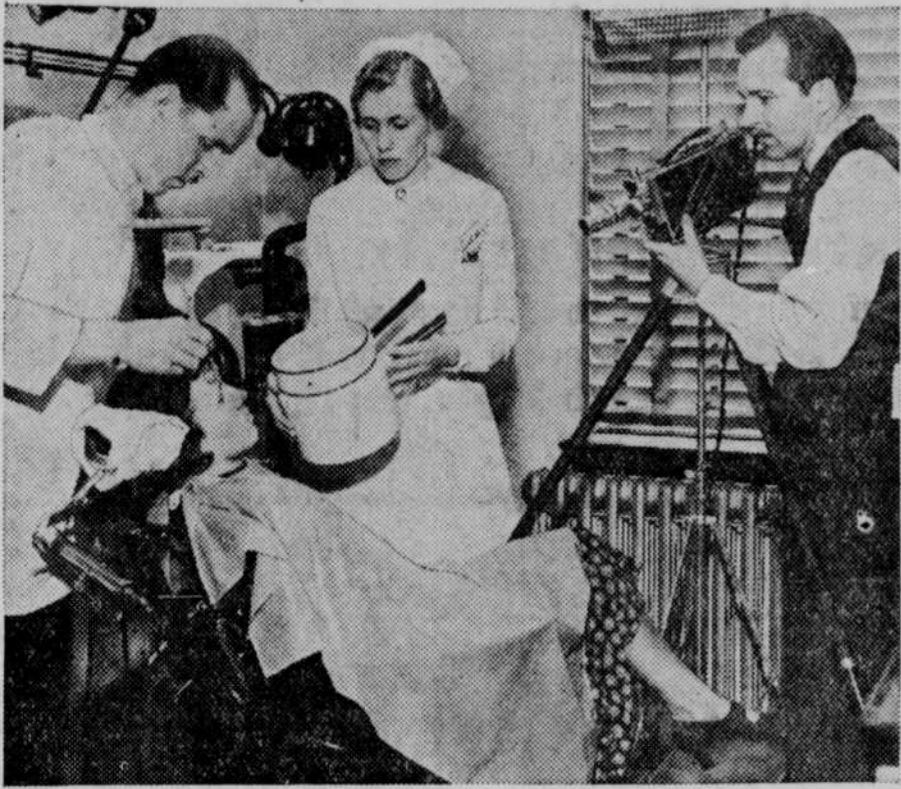
Hatching eggs held longer than 10 days decrease in hatchability.

The principal poultry markets of the country are New York, Boston, Chicago and Philadelphia.

Prevent floor drafts by whatever treatment of the poultry house may be necessary, but break up these drafts at all costs.

The usual number of males used in breeding flocks is one male to 15 hens, or six to 100 is the usual number in commercial hatching egg flocks of White Leghorns.

New Departure in Dentistry



Dr. James E. Bliss (above left), instructor in prosthetics at Western Reserve university, at Cleveland, Ohio, is shown performing a new dentistry technique, which ensures that the face of a patient will look the same after a new set of teeth have been put in as before. In this scene he is applying a plastic substance to the patient's face, which will harden into a mask, and he is having the patient photographed before the teeth are extracted.

ELDERLY CADDY



Known only as "Jim," this eighty-two-year-old man is one of the most picturesque figures of the British golfing world. A caddy at the Sunningdale links near London, Jim is on the job rain or shine.

Nicholas Foregoes Royal Rights



Prince Nicholas of Rumania who is reported to have renounced all his royal rights in order to stay with his wife and their four-year-old son. They will move into French exile. Photograph shows Nicholas and his wife soon after their marriage.

DEMOCRATIC LEADER



Mrs. Thomas F. McAllister, of Grand Rapids, Mich., for several years a forceful political personality in Michigan, who recently became director of the women's division of the Democratic national committee.

Near-Centenarian Prefers Corn-Cob

Mrs. Abigail Leffingwell, of Los Angeles, ninety-eight years young, as she appeared in her latest perma-



nent wave. She believes in modern things, but prefers her corn-cob pipe to those modern cigarettes.

Queen and Children at Concert



Queen Elizabeth of England and her two daughters, Princess Elizabeth (left) and Princess Margaret Rose as they attended a concert recently at Central hall, Westminster. The concert was for London children.

Chicago Crime Foe Reaches Age of 85

Frank J. Loesch, noted Chicago lawyer who achieved national fame a few years ago for his vigorous leadership against crime in the city



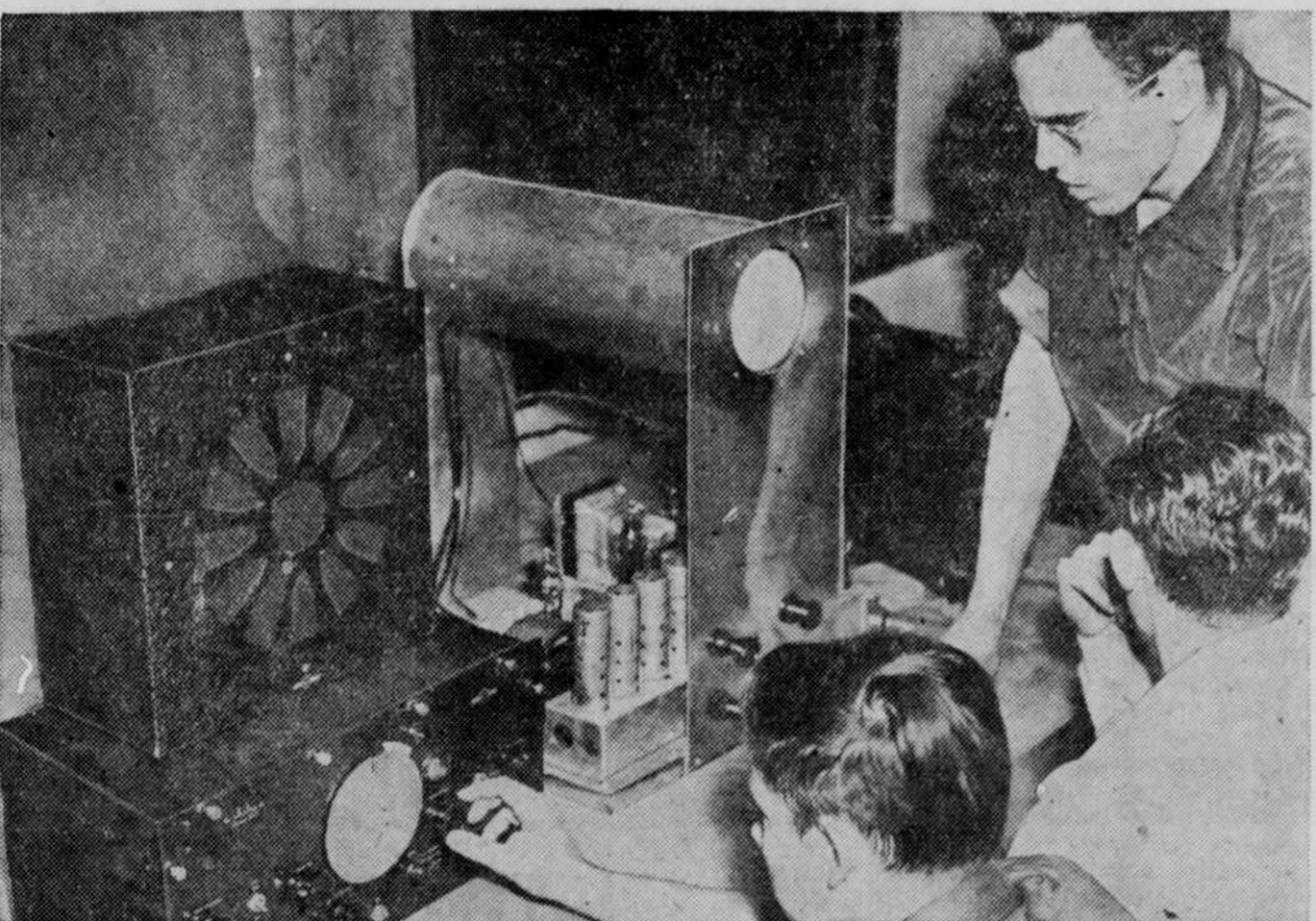
recently celebrated his eighty-fifth birthday. Head of Chicago crime commission, he received credit for coining the phrase "public enemy."

Kansas Gets Damp After 56 Years



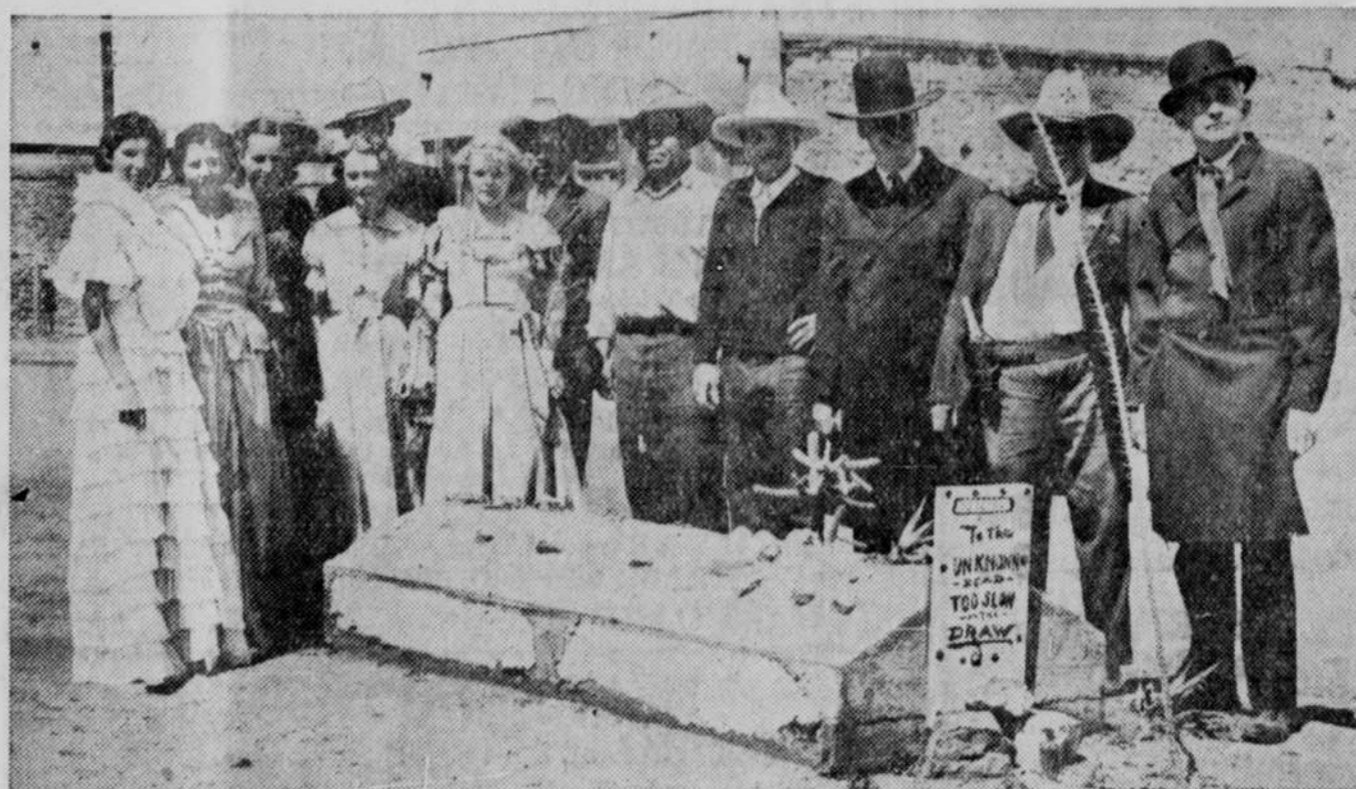
After a 56-year reign as the great American desert, arid Kansas gets slightly damp as Gov. Walter A. Huxman signs the legislative bill permitting the legal and regulated sale of 3.2 beer in Kansas—a history-making event. The ending of the long reign of "bone dry prohibition" was to promote temperance through use of light wines and beer. Kansas first went dry in 1881.

New Type Television Receiver Developed



Students at the California Institute of Technology at Pasadena examining a new type of television receiver developed at the institute by Harry R. Lubeke. A television demonstration proved a major attraction as 10,000 visitors jammed the show rooms of the school.

Tombstone Builds Memorial to Its Tough Old Days



As a memorial to the tough old days in the eighties when Tombstone, Ariz., was the scene of some of the bloodiest gunplay in the history of the Southwest, a concrete coffin has been erected on the main street as a monument to the nameless dead who fell in front of the notorious Bird Cage theater, because they were too slow on the draw. Immortalized through Walter Noble Burns' book, "Tombstone—an Iliad of the Southwest," the town is now a mecca for tourists. The dedication ceremony is shown above.