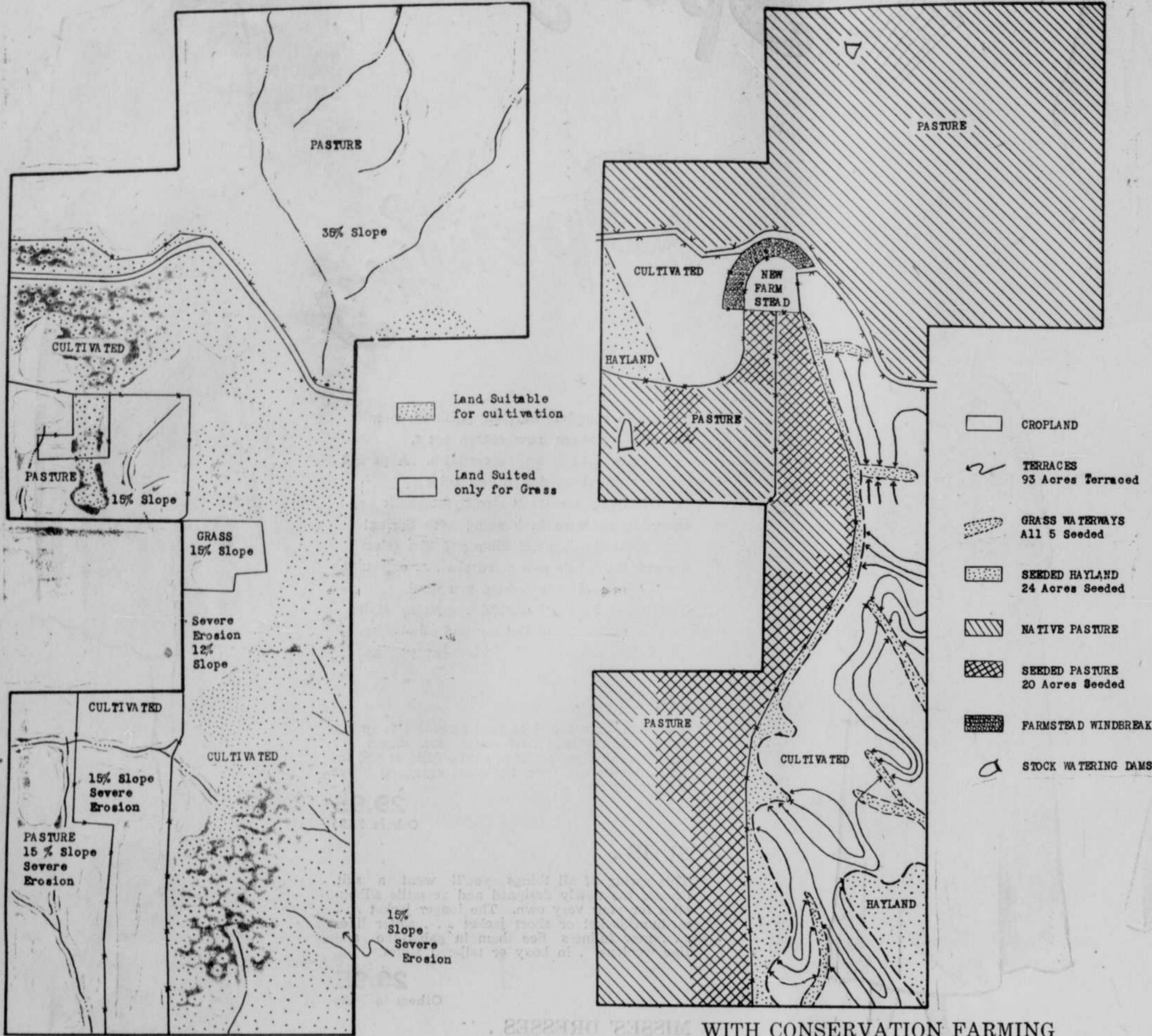


Long - Range Plans Pay Lynch Farmer

Fred Spencer Works 'Miracle' in Short Time; Farmstead Relocation Considered in Plans



BEFORE CONSERVATION FARMING

This map of the Fred Spencer farm, north of Lynch, shows how it looked before he worked up a complete longtime soil conservation program. The map shows the portion of the farm which is suitable for cultivation and that which should be kept in grass. Also shown are the slope and erosion conditions that make the land unsuitable for continuous cultivation. By comparison it shows which fields have been cultivated.

WITH CONSERVATION FARMING

This map shows how it will be when he gets his Soil Conservation Service program completely established. Only the best land will be farmed. It will have conservation practices to save soil and moisture and keep the land productive for years to come. Steep and eroded land has or will be seeded to grasses for hay and pasture. The farmstead will be relocated and protected by a recently planned windbreak. Ponds furnish water for livestock as well as check gully erosion.

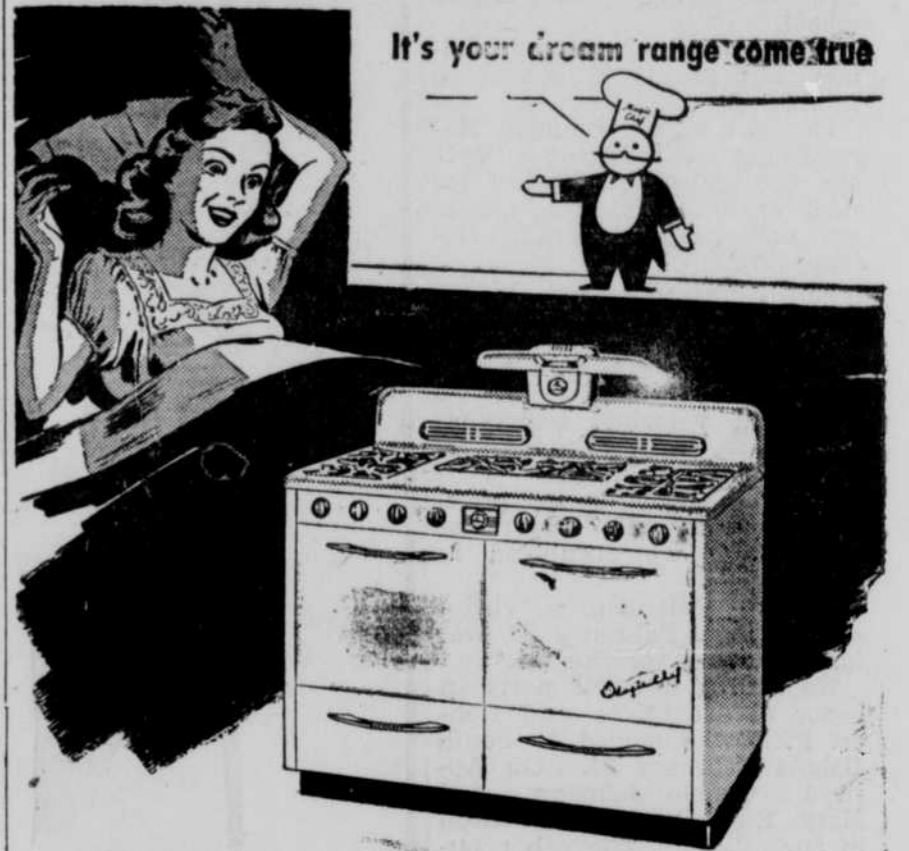
(Continued from column 4.)

has constructed all dovetail into a workable complete program when it is finished.

Any farmers or ranchers who are interested in such programs should contact their Soil Conservation district offices for more information. The

U. S. Soil Conservation service furnishes the local districts personnel trained and experienced in developing such cooperative plans with farmers.

Venetian blinds, 7-day delivery, made to measure, metal or wood, all colors. — Brown-McDonald's, O'Neill. 331f



THE NEWEST IN GAS RANGES... *Magic Chef*



New SUPER CAPACITY

You've dreamed about getting extra capacity for your extra special occasions — and here it is. Six fast-heating top burners, two of them being giant super-duty burners, a larger 18" oven big enough to oven-prepare full meals, a 26% greater broiling area in the smokeless Swing-Out Broiler and a wider working surface.



New AUTOMATIC FEATURES

You'll be amazed at the time you can save with such features as instant automatic top lighting, fast-heating easy-to-control burners, the handy clock-timer and the Red Wheel Regulator which controls your baking and roasting temperatures so accurately. Let us show you how you can save time, food, and money with this new Magic Chef.

The New Magic Chels are now on display at

Ralph N. Leidy

PHONE 410, O'NEILL

HEADQUARTERS

— FOR —

Servel Gas Refrigerators

STAY SILENT — LAST LONGER



Ralph N. Leidy

PHONE 410 : O'NEILL

Concrete Blocks

Permanent — Firesafe — Low in Cost

WHATEVER . . .

you build investigate the advantages of Concrete Masonry Construction. More concrete block are being used today throughout the United States than any other masonry units.

OUR BLOCKS . . .

are uniform in size and properly cured with live steam meeting all requirements of the Nebraska Concrete Masonry Assn. Leading Architects and Engineers highly approve concrete masonry produced to these high standards.

See your dealer — ask for PLAINVIEW BLOCKS — or write or call

Dwain B. Kirk

CONCRETE PRODUCTS CO.

"Member Nebr. Concrete Masonry Assn."

PLAINVIEW : NEBRASKA

farmed under the revised program.

Land with 12 and 15 percent slopes was plowed and farmed without conservation practices. This land eroded and became undesirable for cultivated crops.

Grass has been seeded on 24 acres for hay and 20 acres for pasture. The balance will be seeded as it works out most conveniently for Mr. Spencer. Water is provided for livestock in the pastures by ponds

and wells located so as to promote even grazing in each pasture.

The land with the more gentle slopes where the erosion has been less severe and where the type of soil is better is kept in cultivation. However the old style method of straight-row farming is not sufficient to keep this land at its highest possible productivity over the longest possible period of time. Of course, Mr. Spencer is following a crop rotation which will return fertility to his soil. This, Mr. Pilcher, the Soil Conservation representative, says "is the first simple step in a soil conservation program and one that every farmer should follow."

Mr. Spencer's rotation consists of corn, small grain and sweet clover. The sweet clover is seeded with the small grain and left the second year to add nitrogen and organic matter to the soil.

There were watercourses where the water concentrated and eroded the soil as it left the field. These have been sloped, shaped and seeded to a mixture of bromegrass and

western wheatgrass. In order to hold back the water so more could soak into the soil and reduce the amount that ran off carrying with it the plant food and valuable top soil Mr. Spencer farms all of the 113 acres of the cropland on the contour, 93 acres of this is given additional protection with 3.2 miles of terraces which he constructed with his farm tractor and moldboard plow. The additional 20 acres will be terraced as soon as he has the time.

It is difficult to maintain a good road to the present building site and Mr. Spencer is not very well satisfied with it. His plans call for moving it to a more desirable location. He has already planted a new farmstead windbreak which is on the contour and protected from erosion with a terrace.

Mr. Pilcher points out that this illustrates the advantage of developing a complete longtime soil conservation program because the trees which Mr. Spencer has planted, the grass he has seeded in fields and waterways and the terraces he

(Continued in column 6.)

Public Dance

AMERICAN LEGION BALLROOM

— O'Neill —

HANK WINDER AND HIS ORCHESTRA

Tuesday, March 30

Adm.: \$1 Per Person, Including Tax