

Friendship Push Buys' Car Rye, Part-Car Meat

HOLT DONORS CONTRIBUTE \$6,218.16; RYE SHIPPED FROM ATKINSON

A rail carload of rye and a part-carload of meat is Europe-bound from Holt county as a part of the Abraham Lincoln Friendship Train. Leaving Lincoln today (Thursday), the train will move across the Eastern half of the United States this weekend with vital foodstuffs for the hungry in war-devastated areas.

The Friendship Train drive in Holt county grossed \$6,218.16, and the books were closed Monday at a meeting of the officers of the improvised county organization, headed by Mrs. Guy Cole, of Emmet, and Ernie C. Weller, of Atkinson, the cochairmen.

The car of rye was loaded Saturday at Atkinson and shipped Sunday via the North Western railway. The rye cost \$4,146.82. The balance of the fund—\$2,071.34—was forwarded to the Abraham Lincoln Friendship Train headquarters. At the time the cash was forwarded it was estimated the value of a carload of utility beef was \$3,500.

The car of rye was highly decorated for identification purposes for its trip to an eastern port. In 8-inch letters, a sign on the steel side of the car read:

Food from Holt County NEBRASKA Rye for Bread

Seventy-five or more cars are expected to make up the train when it leaves Lincoln. Its size is expected to be swelled to more than a hundred cars after the train leaves Omaha. Holt's rye and the portion of a carload of meat will join the train at Omaha.

Other Friendship Train movements are in progress in Iowa, Illinois, Indiana, Ohio and possibly Pennsylvania. The Abraham Lincoln movement began in Geneva.

Edward M. Gallagher, of O'Neill, was chairman of the Holt committee; Rev. W. C. Birmingham, of Atkinson, secretary, and G. E. Miles, of O'Neill, publicity chairman.

Land Group to Elect 3 Directors at Meet

A lively program is expected to attract more than 500 farmers and stockmen from Boyd, Holt and Wheeler counties to O'Neill next Thursday, February 19, for the annual stockholders' meeting of the Elkhorn Valley National Farm Loan association.

Starting at 10:30 a. m., the meeting will be held in the Royal theatre. A noon dinner will be served at the M&M cafe.

Harry Ressel, of O'Neill, president, will be chairman.

Three directors will be elected for three-year terms, and Lyle P. Dierks, secretary-treasurer, will present the credit cooperative's annual report.

Principal speakers will be representatives of the Federal Land bank of Omaha. Entertainment features will include a movie and door prizes.

Panowicz New Manager of Furniture Firm

Edward Panowicz, of Omaha, a World War II veteran with two years of experience in the southwest Pacific, has been named manager of the Midwest Furniture & Appliance company store in West O'Neill. He succeeds H. J. Hoffman, who was partner-manager of the store since it opened in March, 1947. Don Myers, of Omaha, Hoffman's partner, has purchased Hoffman's interest in the firm.

Mr. Panowicz managed a furniture store in Omaha for Mr. Myers prior to the war.

A veteran of four years in the Navy, he is married and has one son, Frank, 10-months-old. He plans to move his family here soon.

Youth Rally Held—

CHAMBERS—About 150 young people from Neligh, Oakdale, Ewing, Page, O'Neill and Spencer attended a youth rally held Sunday at the Methodist church here. A supper was served. Rev. Dawson Park, of Neligh, was in charge of the services.

Page Soldier's Body Returned for Burial

PAGE—The remains of Pfc. Bernard E. Bolin were interred in the Page cemetery here Wednesday. Pfc. Bolin's body is the second of Holt county's World War II war dead to be returned to the U. S. from overseas for burial under the government's plan.

The youth was wounded in action on June 15, 1944, a week after the initial landing in Normandy in northern France and he died 2 days later. He was only 19-years-old.

Born December 3, 1924, near Middlebranch, a son of Mr. and Mrs. Jess Bolin, now of Lincoln, he moved with his parents to a farm near Page at the age of 6. He received most of his education in the Page school where he graduated in May, 1943. He was active in athletics.

After his parents moved to Lincoln in December, 1942, the youth made his home with his

BLANKET TAX PLAN HEARD

Rural School Officials Are Opposed to Redistricting

Three Holt county rural school officials last Thursday heard approval of a blanket tax plan designed to reduce school taxes in many school districts. These were: County Superintendent Elja McCullough, of O'Neill; Mrs. Lloyd Whaley, of O'Neill, and Fred Forslund, of Ewing.

The trio attended the annual conference of the Nebraska State Rural School Boards association held in Norfolk.

The blanket tax plan would also make districts without schools pay a share in the cost of education.

The plan, presented by Association President Alfred V. Gabelman, of Madison, will be offered to the unicameral legislature to prevent introduction of a new redistricting bill.

The proposal calls for a four-mill levy on all rural school districts in the state. All of the money would be kept within the county where it is raised.

May Solve 'Unfairness'

Districts with 6 or more pupils would get back the taxes raised by the levy to be used with additional tax money to operate their schools. Districts with less than 6 pupils would contract with neighboring districts for instruction on a cost-per-pupil basis.

County Superintendent McCullough said that the blanket tax would solve some of our problems (in Holt county) in regard to the unfairness that exists. She explained that some districts have no tax and other have taxes that are too high.

Under the plan districts with less than 6 pupils who wished to have their own schools would not be eligible to taxes raised by the four-mill levy. They would have to make an additional levy to operate their schools.

Mr. Gableman told the rural school officials that the plan does not prevent any district from reopening its school at any time it has 6 or more pupils, and that there will be no loss of local control under the plan.

Outlaw Grocery Cash Register Is Looted

The cash register at the Outlaw Grocery was looted of \$117 during the early hours Friday, it was reported to authorities by Tony Asimus. The thieves gained entrance by breaking a window in a rear door.

The Asimus Bros. are offering a \$150 reward for information leading to the conviction of the party that stole the cash.

grandparents, Mrs. E. A. Edmisten and the late Mr. Edmisten.

He was inducted into the Army on July 5, 1943, and received most of his infantry training at Ft. McClellan, Ala., spending a 5-day furlough with his parents while enroute from McClellan to Ft. Meade, Md., from where he was sent to England in late December, 1943.

As a member of the ground forces, his unit helped spearhead the invasion of France. When the offensive was only a week old, young Bolin was fatally wounded.

Survivors included: Parents; 5 sisters—Mrs. Alice Szama, of Plainview; Betty Carlene, Ura and Marian, all of Lincoln. Special memorial services were held at the Page public school auditorium on July 19, 1944.

At Wednesday's final rites, brief services were held in an

TOURNEY SITES ARE SELECTED

O'Neill Gets B Meet, Atkinson C and Neligh D

O'Neill, Atkinson and Neligh were chosen as basketball tournament sites this week for class B, C and D meets, respectively.

The B meet at O'Neill will be held March 3, 4 and 5, in the public school gymnasium. Schools assigned are: Ainsworth, Bassett, Burwell, Creighton, Neligh, O'Neill, St. Mary's (O'Neill) and Valentine. St. Mary's, a class C school, voluntarily moved into the B bracket.

Entries in the class C tourney to be held at Atkinson are: Atkinson, St. Joseph's (Atkinson), Butte, Ewing, Lynch, Orchard, Spencer, Springview, Stuart.

In 1947 the north-central B meet was held at Atkinson, and the C tourney was played in O'Neill.

Holt county class D schools—Inman, Chambers and Page—will compete at Neligh. Other entries there are: Clearwater, Elgin, St. Boniface (Elgin), Oakdale and Petersburg.

8 Regional B Meets

There will be 61 teams in the state competing in eight regional class B tournaments. Winners will go to the state meet. There will be 144 teams competing in 16 district class C tournaments and winners will be paired in eight play-offs.

Two hundred and 70 teams will compete in C in 30 district tournaments. Winners will be paired in seven four-team play-offs.

Ainsworth is favored to win the O'Neill B meet, while St. Joe, last year's state C champ and this year's state Catholic and Holt county titlewinner, is expected to breeze through the hometown Atkinson C meet. Inman, runnerup in the Holt county tourney this year and last year's district D titleholder, is expected to repeat at Neligh.

Classifications are based on enrollment, except when a school elects to compete voluntarily in the next higher bracket. St. Joe, a class D school, has won the state class C title for two consecutive years.

'PAPER LOSSES' TAKEN CALMLY

The O'Neill grain market has reflected the confusion which has prevailed for a week in the principal market centers in the United States.

Corn has dropped here from \$2.40 per bushel to \$1.85 since the downward break set in a week ago. Oats had dropped from \$1.22 to 95c. Other grains and livestock likewise have been affected by the downward spiral that has prevailed for the past 7 days.

Local livestock operators and grain buyers and sellers are calmly accepting the "paper losses" that have resulted during the week's confusion.

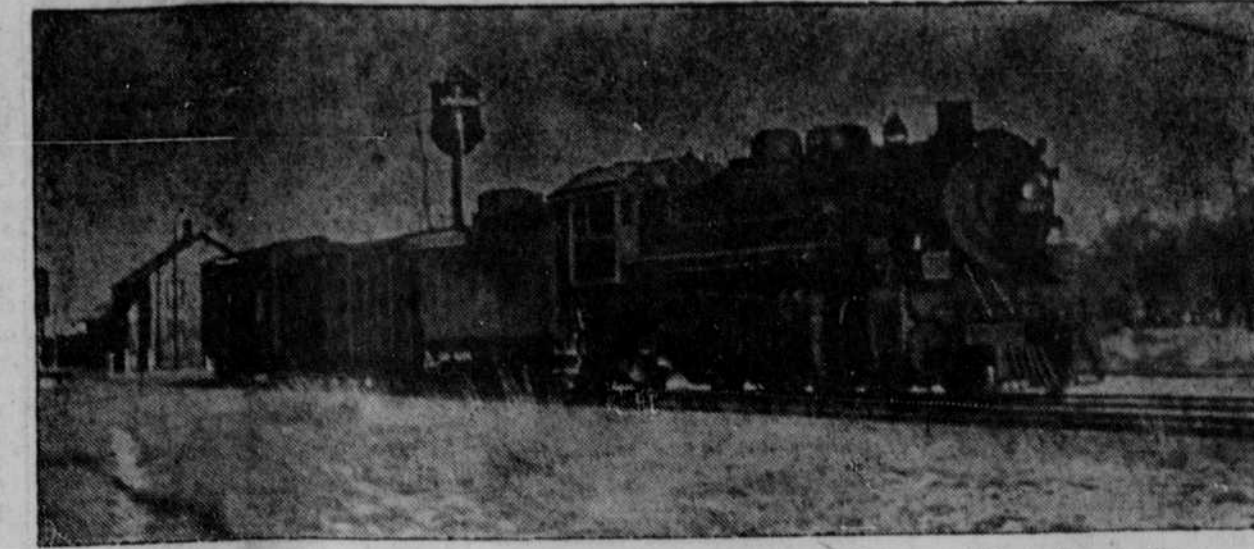
There has been no flooding of the market.

'Housewarming' for Recent Emmet Bride—

EMMET—Mrs. Paul Newton, the former June Luben and a recent bride, was honored Tuesday afternoon in a "housewarming." There were 19 ladies present. The honoree was presented a 6-way electric floor-lamp and a purse.

There was no change in schedule at either the O'Neill public school or St. Mary's academy, although there were numerous absentees among students traveling a distance.

The lowest temperatures here during the short-lived blizzard was 6-below zero, registered early Wednesday. The week's summary, based on 24-hour periods ending at 8 a. m., follows:



FRIENDSHIP FOOD... A carload of rye is shown (above) being picked up in switching operations at Atkinson as part of Holt county's contribution to the Abraham Lincoln Friendship Train. The car was conveyed out of the county by a fast, red ball freight. A carload of flour was loaded at Neligh (below). Left-to-right: Ken Scofield, of Neligh,

publicity chairman; Mrs. Loyd Kimes, of Clearwater, secretary of the Antelope county drive; M. H. Snider, of Clearwater, treasurer; W. H. Buchanan, of Neligh, Antelope county agent; Richard Vollbrecht, of Neligh, mill employe, and Rev. E. A. Kiel, of Elgin, drive chairman. — Photos courtesy Omaha World-Herald.



FRESH STORM CHILLS REGION

All-Night Blizzard Blocks Side Roads; Highways Open

Snow shovels and ear muffs were fashionable items in the O'Neill region late Tuesday and Wednesday as a full-fledged blizzard moved across the state.

North-Nebraska was in the center of the storm, and the weather bureau indicated that the cold would continue through today (Thursday).

The snow was driven by southeasterly winds. Only an inch and a half of snow fell during the storm. The wind blew both fresh and old snow blocked some side roads and made streets difficult.

The state highway department reported that all principal roads in the O'Neill territory were open, but there was some drifting. Snowplows were immediately dispatched to trouble spots. The Chicago & Northwestern railway's mail-passenger trains number 13 and 14 ran from 20- to 30-minutes late during the height of the storm.

All busses in an out of the city were running on schedule, according to Val Darling, manager of the bus terminal here.

There was no change in schedule at either the O'Neill public school or St. Mary's academy, although there were numerous absentees among students traveling a distance.

The lowest temperatures here during the short-lived blizzard was 6-below zero, registered early Wednesday. The week's summary, based on 24-hour periods ending at 8 a. m., follows:

	Hi	Lo	Moist.
February 5	— 18	4	
February 6	— 23	5	
February 7	— 22	5	T
February 8	— 11	— 12	
February 9	— 23	— 11	
February 10	— 18	4	
February 11	— 20	— 6	.09

Incubator Baby Hits the 2-Pound Mark

ATKINSON—Atkinson's incubator baby Wednesday reached the 2-pound mark and is "doing well."

Born 3 months premature to Mr. and Mrs. Carl Damero, of Phoenix, the infant weighed 1 pound 12 ounces at birth on Monday, February 2.

Under the care of Dr. N. P. McKee and Nurse Kathleen Gaylor, R. N., the baby has spent considerable time in an oxygen tent. It is thriving on liquids received by medicine dropper and the attendants are confident the baby will live.



TEACHES TEACHERS

Fred G. Dale, professor of geography at Wayne State Teachers college, is conducting a special study center class at O'Neill on the geography of Europe for teachers of Holt county. The class meets five times during the current college semester for which the teachers receive regular college credit. Wayne State conducts similar study centers in 15 northeastern Nebraska cities to provide on-the-job training for nearly 400 teachers.

EDWARDS YOUTH TO REFORMATORY

Disposition of Cases Against 5 Others Not Yet Made

Robert Edwards, 12, son of Mr. and Mrs. Robert G. Edwards, of O'Neill, Saturday was sentenced to the state reformatory at Kearney by Judge D. R. Mounts in Holt county district court.

Young Edwards was one of a "gang" of juveniles brought into court on charges of "delinquency and dependency" that grew out of a juvenile crime wave.

Entrance into Father Flanagan's home at Boys Town is being sought in behalf of two of the youths. Two others were paroled to private persons—one with the stipulation that he remain off the streets of O'Neill at night for a year. The case against the sixth boy was continued because of illness.

The crime wave included a breaking and entering a grocery store, the Country club, and the looting of parked automobiles.

RTES AT VERDEL

LYNCH—Lew Wilson, 85, died in a hospital here and funeral services were held at Verdel February 5, where he has lived for many years.

ATKINSON PAIR WEDDED 50 YEARS

Joseph Mlinar and Wife Hold Open-House; Homesteaders

ATKINSON—A pioneer Holt county couple, Mr. and Mrs. Joseph A. Mlinar, Sunday celebrated their golden wedding anniversary. There was a dinner for immediate relatives and close friends in Memorial hall, followed with open-house at their home between 2 and 5 p. m.

Four of the persons who witnessed the wedding in Atkinson on February 9, 1898 were present at the anniversary dinner. They are: Mr. and Mrs. Theodore Kubart (who were not married until 10 years after the Mlinars' wedding), John Mlinar, brother of Mr. Mlinar, and Mrs. Frank LeMunyan, all of Atkinson.

Mr. Mlinar was born in Ringold county, Iowa, on March 9, 1870, and came to Holt county at the age of 14 with his parents the late Mr. and Mrs. Frank Mlinar. The original Mlinar family settled 12 miles southwest of here.

Born in Chicago, Mr. Mlinar was born in Chicago, Ill., on October 26, 1879, and came to Holt with her parents, the late Mr. and Mrs. Joseph Kubart, in 1887. The Kubarts homesteaded 5 1/2 miles southwest of Atkinson.

Following the marriage, the Mlinars settled 16 miles southwest of Atkinson, in the same community in which they were reared. After 4 years there they moved onto a place 5 miles southwest of here.

The Mlinars became the parents of six children. They are: Charles, of Atkinson; Mrs. Clarence (Mildred) Johnson, of Stuart; Mrs. George (Helen) Beck, of Atkinson; Edward, of Atkinson; Mrs. Merlin (Eva) Quigley, of Bellevue; and Mrs. Duane (Hazel) Lockman, of Stuart. There are 7 grandchildren.

Now 77- and 68-years-old respectively, both Mr. and Mrs. Mlinar are enjoying "fair" health.

There were 47 persons served at the anniversary dinner and more than a hundred callers during the open-house.

Lions Set for Benefit Ball Game

The Lions club is set to entertain a record crowd at a benefit basketball game in the O'Neill public school auditorium Friday night, beginning at 7:30 p. m.

The game will feature two outstanding amateur teams—the Nut-House team, of Lincoln, and the Pierce Cardinals. In a preliminary the O'Neill Towners will tackle the Spaulding Towners.

ZONING PLAN NOW OFFICIAL

All Douglas Street Is Included in the Business Area

O'Neill's much-talked-about zoning proposal, which has created more stir in the city council chambers than any single topic in recent years, is now official, effective today (Thursday). The ordinance—number 234-A—is being published in full in this issue of The Frontier.

In a meeting December 12, the city council adopted the ordinance, but until it was published the ordinance was not effective. Its publication in this issue was ordered at the regular meeting of the council Monday night. (See page 4.)

The salient features of the 234-A include the definition of business, industrial and residential districts. The business district includes most of the geographical center of the city and all lots facing Douglas street—the main thoroughfare—from the east end of the city to the west end. The industrial district is mainly in the vicinity of the Chicago & North Western and Burlington railway tracks. All other sections of the city are residential and business building will be restricted from the residential area.

Original Draft Amended

The principal residential sections are restricted to two-family dwellings, apartment houses, parks, churches, schools, museums, libraries, playgrounds, hospitals and nurseries.

The original zoning proposal, before it was amended in December, specified that portions of Douglas street would be considered residential. This feature was controversial and ultimately amended to make all of Douglas street business.

The business district also includes all of blocks 15, 16, 21 and 22, portions of blocks 17, 20, 33 and 34, most of blocks 27 and 28, the south-half of block 14, and the north-half of block 23.

New houses in the principal residential districts must contain not less than 350 square feet of first-floor area, or less than two-thirds of the average floor space of all other houses in the block.

The floor-area and other restrictions do not apply in three outlying residential sub-districts in the northeast, southeast and southwest corners of the city.

Runnels and Mellor Win Speech Honors

Phyllis Runnels, of Stuart, and Murray Mellor, of O'Neill, won the right to represent Holt county in the district 4-H club speech contest here Friday. In the county elimination contest held here Saturday, Runnels and Mellor were winners in a field of 12.

"Where Do You Live?" was Miss Runnels' topic, and Mr. Mellor spoke on "Soil Conservation." The contestants were limited to 8 minutes of extemporaneous speaking.

That 4-H youths are conscious of juvenile delinquency was evident in speeches given by Beverly Small, of Amelia; Leslie Sweet, of Stuart, and Leah Serck, of Emmet. Jean Cobb, of Stuart, and Benton Mellor, of O'Neill, spoke on farm safety.

Other speakers and their topics were: Maxine Peterson, of Amelia, "Home Economics as a Profession"; Don Fullerton, of Amelia, "Why I Think Boys and Girls Should Join 4-H Clubs"; and Wilma Potts, of Emmet, "Sportsmanship."

Friday's district meet will be held in the band room of the O'Neill public school, beginning at 1 p. m. The public is welcome. Floyd W. Hoover, of Lincoln, assistant registrar at the University of Nebraska, will be the judge.

District winners will compete for state honors at Lincoln in June.

Youth in Blast Case Is Paroled

George E. Jardee, 20, who pleaded guilty to charges growing out of a blasting incident near here, was paroled to Thad Saunders, of O'Neill, Holt parole officer, by District Judge D. R. Mounts.

The youth, who was brought here by Holt authorities from Climax, Colo., has been ordered by the court to make restitution for the property damage and pay court costs.

Jardee admitted the blasting during the Christmas holidays. He was arraigned in county court and bound over to district court.