

CHURCHES

CHRIST LUTHERAN (O'Neill)

Rev. Clyde Cress, pastor
 "Jesus taketh Peter, James, and John . . . up into a high mountain apart, and was transfigured before them; and His face did shine as the sun, and His raiment was white as the light." "Peter said unto Jesus, Lord, it is good for us to be here." Matt. 17: 1, 4.

It was not far from Bethlehem's manger to Calvary's cross for our dear Savior. During His short life here on earth, He accomplished His one purpose: Yes, He has redeemed me, even me, from all my sins, and now offers me forgiveness of all my sins FREE of charge.

By faith are we saved, not by works. By faith in this One and Only Savior, Jesus, are we transferred from earth to heaven. Christ once laid in a manger and once hanged on a cross—see this God-man? He is your Savior. Come, hear Him speak to you in His Word as it is taught in our Sunday-school at 10:30 and proclaimed from the pulpit at 11:30 this Sunday.

ASSEMBLY OF GOD (O'Neill)

Rev. J. W. Clapper, pastor
 Sunday-school, 10 a. m.; morning worship, 11 a. m.,
 Bible study and prayer meeting, Wednesday, 7:45 p. m. Junior church, Friday, 7-8 p. m.

Try FRONTIER want ads.

MONEY TO LOAN

ON
 AUTOMOBILES
 TRUCKS
 TRACTORS
 EQUIPMENT
 FURNITURE
CENTRAL FINANCE
CORP.
 C. E. JONES, Manager
 O'NEILL, NEBRASKA

CENTER UNION (O'Neill)

Rev. Melvin Gdosenbach, Pastor
 On January 17, the Wesleyan group day will be with us. The first service will be at 10:30 a. m., the Center Union young people being in charge. Basket dinner at noon. Children's meeting at 1:30 followed by peoples' meeting, some special singing, and sermon by Rev. Keith Cunningham, pastor of the Wesleyan church in Neligh.

On Sunday, January 18, morning worship at 10, Sunday-school at 11. Evening service at 8.
 We welcome you to all of these services.

HOLINESS CHURCH

Rev. Melvin Grosenbach, Pastor
 On Sunday, January 18, Sunday-school at 10. Harley Fox is superintendent. Preaching service at 11. In the evening at 7 o'clock there will be some recorded music. Regular service starts at 7:30. Prayer meeting Friday night at 8. Come and bring your friends.

METHODIST (O'Neill)

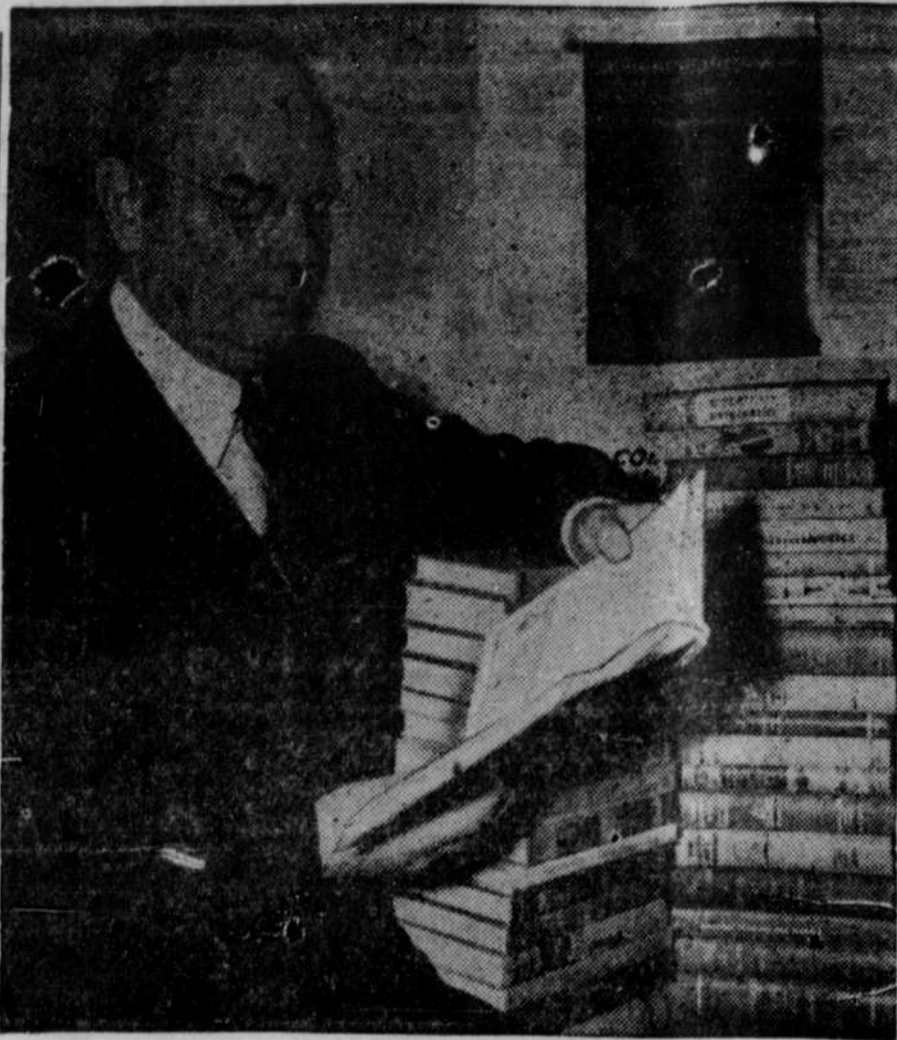
Rev. Lloyd W. Mullis, pastor
 Church school, 9:55 a. m.; Lorenz Bredemeier, general superintendent.
 Worship, 11 a. m., "The Bible Conception of God." Sacrament of baptism and reception of members.
 Intermediate Fellowship, 6 p. m.
 Methodist Youth Fellowship, 7:30 p. m.

METHODIST (Inman)

Rev. E. T. Baldwin, pastor
 Worship, 11 a. m.; church school, 10 a. m.; MYF, 7 p. m.
 A meeting of the official board was held last Thursday evening in the parsonage.

METHODIST (Emmet)

Rev. W. C. Birmingham, pastor
 Worship, 9:45 a. m., sermon by pastor. Sunday-school, 10:45 a. m., Mrs. Guy Beckwith, superintendent.



SOMETHING NEW HAS BEEN ADDED

John Snyder, secretary of the treasury, is leaving through some of the 80 different school textbooks which now contain material on United States savings bonds. In-

clusion of the "plug" for bonds is the result of cooperation of members of American textbook publishers with the savings bond division of the treasury department.

The Frontier Woman

By BLANCHE SPANN PEASE

Hi, there all you nice people!

What goes on at your place? What are you doing these days? And what are you eating?

As usual, I'm as busy as the teen-aged gal whose mother doesn't want her to read confession stories. The gal keeps reading them and I keep working. I have been pondering as to how to stretch a small amount of money over a lot of items. Grin. Our household will have to have some new sheets this year and oh madam, the price of even one sheet these days.

We like a sheet that is not too heavy. Oh, I know the heavier ones wear longer, but oh how long they take to dry! And if you send the laundry out (most of us don't worry about this) and pay for it by the pound, it's cheaper to use a lighter weight. Some like a medium weight sheet.

Be sure when you buy sheets that they aren't too heavily weighted with sizing. You can tell by briskly rubbing the material between your fingers.

Buy sheets that are long enough for a good fold over at the bottom. Of course, you want them wide enough so that the lower sheet can be neatly mitered but you needn't buy them overly wide. We find the 81x108 inch a pretty good buy. Don't purchase pillow cases too small for your pillows.

Pastel colored sheets are back on the market. Several years ago we invested in a set of green sheets and pillow cases and are still using the sheets. They're still very attractive. Choose them to go with your bedroom color scheme, either to match or to harmonize with the bedspread.

After Christmas or midwinter is often a very good time to buy sheets, pillowcases and such items.

—tfw—
 Unbleached muslin and sheeting are back on the market in some of the O'Neill stores. I notice by Frontier advertisements. If you are redecorating and fixing up the home or just starting out housekeeping, consider these materials for curtains and drapes. Particularly if you are clever with the needle or sewing machine and at doing your own decorating. Some mighty beautiful drapes, curtains and kitchen sets.

For a Good Time

VISIT THE OLD PLANTATION CLUB

Elgin Nebr.

- Fine Food
- Dancing
- Entertainment

Members and their guests are invited to visit the Old Plantation Club.

chance to flourish. Remember that all these materials will wash and wear like iron and can be done up to look well. Almost without exception they will wear longer than the kitchen sets you would be apt to buy. Give your imagination free reign and see if you don't come up with some pretty snazzy ideas.

—tfw—
Prize-Winning Letter—
 Mrs. Martha Strong, of Page, wins our three-months' subscription this week:

Dear Mrs. Pease:
 Am sending in some recipes and hints. Hope they will help some. I like to sit in my rocking chair and rock while reading all your wonderful items in the paper.

Sure is lots of fun and lots of nice recipes. I've tried Minnie Gathje's cranberry and peach salad. Oh, it was good! Will be using that recipe often. I know M'nie, also her folks. We used to live on the White Bull ranch east of Gathje's.

LEMON SPONGE PIE

Two tablespoons butter or oleo, 1 cup sugar, 3 yolks eggs beaten light, juice of 1 lemon, and grated rind, 2 round tablespoons flour, 1 cup milk, salt to taste, 3 whites of eggs, beaten dry. Beat the butter or oleo to a cream, beat in part of the sugar and lemon juice, mix in flour and salt. Then the cup of milk and the whites of the eggs. Bake in deep pie plate lined with pastry, from 30 to 40 minutes in a moderate oven. This will have a sponge on top and cream filling at the bottom.

LEMON CUSTARD PIE

One cup sugar, 2 tablespoons butter or oleo, 2 eggs, 2 tablespoons flour, 1 cup of milk, 1 lemon juice and rind. Cream butter and sugar, add well beaten egg yolks and flour and beat well. Add milk and lemon juice and grated rind, lastly fold in the well beaten whites of the eggs. Turn into the pie crust and sprinkle cinnamon over the top, bake like a custard pie.
 I prepare my baked potatoes

in one-third the usual time by cutting in half, put in boiling water for 5 to 10 minutes, remove and lay cut side down in a greased pan and bake.

When peeling potatoes, peel only a narrow strip around each potato. After cooking, the balance of the skin slips off easily.

Instead of scraping new potatoes, carrots, turnips and the like, use a wire chore ball. This quickly removes the paper thin skin, leaving the valuable food elements beneath. Use the chore ball also for cleaning celery and radishes.

MRS. MARTHA STRONG,
 Page, Nebr., Route 1.

—tfw—
 Thank you for sending us that letter, Mrs. Strong. It has some interesting ideas in it which others are sure to want to try out.

Send Us a Letter for The Frontier Woman—

We are very much in need of letters for The Frontier Woman and surely wish you good people would pick up your pencils and help us out. Write us a letter for The Frontier Woman and win yourself a three-months' subscription to The Frontier, provided, of course, your entry is good enough to use.

You can write about anything you wish. Tell us what you are doing these days. Maybe you have a hobby you'd like to tell us about. Most of you have good recipes and hints to share.

Send your letter to: Mrs. Blanche Pease, The Frontier Woman, Atkinson, Nebr.

REDBIRD NEWS

Mr. and Mrs. Ray Wilson visited "Grandma" Hohndorf January 6.
 Edward Krugman, of Minnola, autoted to Lynch January 6.
 Clifford Wells and son, Robert,

R. H. SHRINER

Fire
 Theft
 Rents
 Wind & Tornado, Trucks & Tractor, Personal Property
 Liability GENERAL INSURANCE Livestock
 REAL ESTATE, LOANS, FARM SERVICE, RENTALS
 Automobile O'Neill — Phone 106 Farm Property

were in Redbird January 7.

Mrs. Fred Truax, sr., and Mrs. Fred E. Truax, jr., visited at M. S. Pete More's January 7.

Mr. and Mrs. Boyd Boelter and Herman Eisert, of Middlebranch, were here January 7. Elmer Leudtke was here last Thursday.

Charley Hull, of Crete, arrived January 7 to visit Mr. and Mrs. Michael Hull for a few days. Mr. and Mrs. Will Hartland visited at Mike Hull's last Thursday.

Louis Hohndorf, of Shelby, and Mrs. John Hickstein, of Grafton, came Friday night to visit their mother, "Grandma" Hohndorf.

Dale Bessert left for Ravenna, S. D., Saturday afternoon to visit his sister and brother-in-law, Mr. and Mrs. John Stewart. Don Allen autoted to O'Neill Friday on business.

O'NEILL TRANSFER

Please route your freight

O'NEILL TRANSFER

An O'Neill firm.

— TRIPS WEEKLY —

Mondays

Tuesdays

Thursdays

Fridays

O'NEILL—Phone 241J

OMAHA—Phone JA3727

Your Patronage Appreciated

JOHN TURNER,

Prop.

Public Dances!

LEGION HALL

O'NEILL

MONDAY, JANUARY 19

LEE WILLIAMS AND HIS ORCHESTRA

Adm.: \$1 Per Person
 Including Tax

WEDNESDAY, JANUARY 28

ELMER HALL AND HIS ORCHESTRA

Adm.: \$1 Per Person
 Including Tax

P-U-B-L-I-C I-N-V-I-T-E-D

A WISE JUDGE SAYS:



"I became judge of the Juvenile and Domestic Relations Court on June 1, 1939. Since that time I have tried approximately 8,000 boys and girls under 17 years of age for violating the law. Of that number, only 42 were regular in attendance in Sunday school or Church. Of course others of the children had at one time or another gone to Sunday school, but many of them had not. Another unusual fact is that of these children there has not been a child in court whose father or mother attended Sunday school regularly."

8077-B

This Advertisement Sponsored by:

- INMAN METHODIST CHURCH
- FIRST PRESBYTERIAN CHURCH (O'Neill)
- LATTER DAY SAINTS CHURCH (Inman)
- PAGE METHODIST CHURCH
- CHAMBERS LUTHERAN CHURCH
- CHRIST LUTHERAN CHURCH (O'Neill)
- CHAMBERS METHODIST CHURCH
- HOLINESS CHURCH (O'Neill)
- METHODIST CHURCH (O'Neill)

ROYAL

THEATER
 O'NEILL

Friday - Saturday
 JANUARY 16 - 17

Big Double Bill
 Al Pearce in

One Exciting Week

with Pinky Lee, Jerome Cowan, Shemp Howard, Arlene Harris, Mary Trean—introducing Radio's newest and youngest band "The Teen-Agers."

—also—

Red River Renegades

starring Sunset Carson with Peggy Stewart.

Adm. 42c, plus tax 8c, total 50c. Children 10c, plus tax 2c, total 12c
 Matinee Saturday, 2:30

★ ★ ★

Sunday - Monday

Tuesday

JANUARY 18 - 19 - 20

Joan Crawford, Dana Andrews and Henry Fonda in

Daisy Kenyon

Adm. 42c, plus tax 8c, total 50c—Matinee Sunday 2:30. Adm. 42c, plus tax 8c, total 50c. Children 10c, plus tax 2c, total 12c

★ ★ ★

Wednesday-Thursday

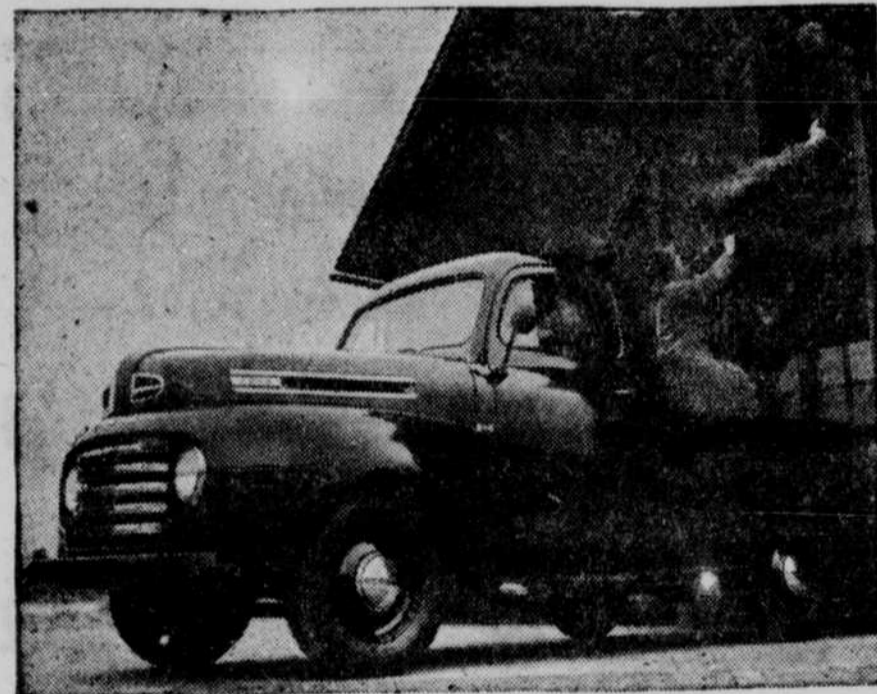
JANUARY 21 - 22

Humphrey Bogart and Elizabeth Scott in

Dead Reckoning

Adm. 42c, plus tax 8c, total 50c. Children 10c, plus tax 2c, total 12c

Introducing the Brand NEW FORD Bonus Built TRUCKS for '48



Here's a "coming-out-party" you won't want to miss! First chance to see the really-new, all-new line of trucks that operators the country over have been anxiously awaiting . . . the New Ford Bonus Built Trucks for '48! They'll be here for you to see, and examine, and drive. Representative models from a line that truly covers the whole range of normal truck uses.

Whatever your business may be, if you use trucks, you owe it to yourself to see these great new Ford "endurance champions"—the trucks that are Bonus Built to serve you for more years, and serve you better!

*BONUS: "Something given in addition to what is usual or strictly due."—Webster.

Listen to the Ford Theater over NBC stations Sunday afternoons 5:00 to 6:00 p. m., E. S. T.

NEW STAMINA!

NEW STYLE!

NEW ENGINES!

NEW COMFORT!

NEW POWER!

NEW MODELS!

LOHAUS MOTOR CO.

PHONE 16

O'NEILL