

CLASSIFIED

FOR SALE
 FOR SALE: Topsy stove and 30-gal. tank with pipes and circulating heater. Phone 476J, O'Neill. 31
 FOR RENT: Tank type vacuum cleaner with all attachments. — Gillespie's, O'Neill. 17
 FOR SALE: Ranch of 1260 acres located five and a half miles north of Page. — J. J. Harrington, Owner, O'Neill. 27

FOR SALE: One 80-gal. electric water heater. — Gillespie's, O'Neill. 31c

FOR SALE: Oil circulating heater with pipes, 30 gallon tank and topsy stove. Telephone 476J, O'Neill. 31c

FOR SALE: 160 acre farm, 1 mile north of O'Neill. — F. J. Dishner, O'Neill. 21

FOR SALE: 1947 cars and trucks, also used cars. Repairing and Storage. — Luber Motor Sales, O'Neill. 31-33p

CAR OWNERS ATTENTION! Liability insurance on farmers' cars, \$16; town cars, \$17, \$18.50 and \$22.50, according to use. Dwelling insurance combined 5-year term, \$11. Why pay more? — L. G. Gillespie Insurance Agency, O'Neill. 31f

FOR SALE: Hospital bed. Used six weeks. Call Theodore Strong, phone 481W, O'Neill. 31c

FOR SALE: Business building on O'Neill's main street. — P. C. Donohoe, O'Neill. 17f

FOR SALE: Three one-month-old puppies, Terriers. — Phone 182-J, O'Neill. 31c

INCOME TAX

For assistance in making out your returns call on: **GEO. G. ROBERTSON** Res. Phone 161W

FOR SALE: New flash camera and bulbs. — O'Neill Hatchery, O'Neill. 31c

FOR SALE: 110-volt electric washer, 107.50. — O'Neill Hatchery, O'Neill. 31c

MISCELLANEOUS

WANTED: We need more flocks of White Leghorns, White Rocks, and New Hampshires to furnish us hatching eggs. Big premium paid-over market price. — Corkle Hatchery, O'Neill. 28-31

WANTED TO BUY: 5- or 6-room modern house, direct from owner in north or west part of O'Neill. — Herbert H. Kaiser, Burwell, Nebr. 30-31p

BY MAIL

CLASSY, serviceable shoe repair. Invisibly soled. Finest materials. **ORCHARD SHOE SHOP** Orchard, Neb. 31-26

NOTICE: Mullen's Radio Service is now located directly across the street west from the Spelts-Ray Lbr. Co. Prompt service, pickup and delivery. Telephone 415. 28f

HEADQUARTERS for Presto pressure cooker repair parts. — Gillespie's, O'Neill. 17

WANTED TO BUY: Good, dry yellow corn, oats, and barley. Write or phone: **Corkle Hatchery, O'Neill.** 28-31

James G. Fredrickson

Kieth A. Abart

— Auctioneers —

Ready to Serve You

Phone 2 O'Neill

NEW FLOOR SANDER and edger for rent. Inquire: Spelts-Ray Lbr. Co., O'Neill. 52f

POWER SPRAYING SERVICE

Barns — with D. D. T. Cattle — with D. D. T. and Rotenone
 Weeds — with 2, 4D Weed Killer Poultry Houses — with Insect Oil
 We have the latest type equipment that develops up to 600 lbs. pressure.

CORKLE HATCHERY Phone 19 O'Neill, Nebr.

SHOPPER SERVICE

I would like to call your attention to a trip I took through our local Gamble store this week.

I went in to buy a gift for my Dad — I should say a gift for my Dad's car. So, naturally, I went to the Downstairs Store to see Marv Johnson. I picked Dad's gift and then took a look around at all the other nice gifts they have down there. The toy stock is very complete and at reasonable prices, too.

I picked up a nice box of 21 Xmas cards for only 21c. The Camfield automatic Pop-up toaster at \$22 is really beautiful. This would make a suitable gift for friend or family.

Then I decided to visit the Main Floor and was very much impressed with the wonderful selection of gifts Jim Harty has selected for his floor. Imagine it! Jim show-me shirts selling at \$1.49 that have a regular price of \$2.29. Among the other several nice gifts I looked at were women's lingerie, slips, and nylon hosiery. I was especially attracted by the complete and very loveliest prints and patterns in the yard goods department.

This about completed my tour of the Main Floor. I decided to go up to the Second Floor and look at the display of furniture. On my way up I couldn't help but stop and admire the beautiful Fashion department on the Mezzanine. Mrs. Ella Thompson, the Fashion Girl, showed me some lovely up-to-the-minute style dresses at prices as low as \$7.98. Ella also had other beautiful dresses ranging as high as \$19.98.

I took a gander at her blouses, too, and are they nice! I believe priced from \$1.98 to \$3.98. She even had the new Window blouse. I was told by Ella that Ladies' winter coats are marked down 25 percent.

A word for the mother, too: Children's Snow Suits, 40 percent off. They are really honys.

On entering the Furniture department I was surprised to find George Head had such a nice selection of furniture. Imagine it! 6 different styles of bedroom sets and some as low as \$99.50! I picked up a nice gift on the "What-Not" shelf for only \$1.50. Also some Linoleum Mats for only 5c each. They were just what I needed.

This about completed my tour, and when leaving the store, Gene, the store manager, called my attention to the large shipment of candy they had just received. Imagine a whole pound of mixed chocolates for only 89c, in a lovely Xmas wrapping, too!

I feel I saved myself lots of walking by shopping in a store with such a nice selection and I saved some cash, too.

Why don't you visit Gamble's new Department Store? I'm sure you will say the same as I do. Shop at Gambles and save time and money.

HAVE money to loan on farms and ranches and city property. See **R. H. Pa. ker, O'Neill.** 17

FOR RENT: One sleeping room. Close-in. Call: 171W. 31f

WANTED TO BUY: A summer cabin in Nebraska's Hidden Paradise. Write: **H. J. Gengler, Hartington, Neb.** 31c

LOST: An acetelyne drum with gauges, lost Tuesday evening in O'Neill! Reward if returned to Kelly's Men Service, O'Neill. 31f

CARD OF THANKS

I WANT to take this opportunity to thank the friends who remembered me with cards and gifts while I was in the hospital. I enjoyed every one of them and will long remember each of you for your kindness.

MRS. GEORGE E. RECTOR 31c

TO ALL my kind friends and neighbors, I wish to express sincere thanks for the beautiful flowers and gifts and the many cards and letters I received during my stay in the hospital. Your kindnesses will be long remembered.

EDITH J. DAVIDSON. 31c

WE WISH to thank our many friends and relatives for cards, floral offerings, and acts of kindness shown during the illness and death of our beloved wife and mother. — **Ralph Young, Leonard R. Young and family, Helen, Edward, Thelma Young.** 31p

Southwest Quarter of Northwest Quarter and Northwest Quarter of Southwest Quarter of Section Twenty-two, All of Sections Twenty-eight and Twenty-nine, North Half, Southeast Quarter, North Half of Southwest Quarter of Section Thirty-two, East Half of East Half, and West Half of Section Thirty-three, Township Thirteen North, Range Sixteen West of the 6th P. M. in Holt County, Nebraska, real names unknown, Defendants.

You and each of you are hereby notified that on the 3rd day of December, 1947, S. H. Brauer and Pauline M. Brauer as plaintiffs filed their petition in the District Court of Holt County, Nebraska, against you as defendants, the object and prayer of which is to quiet and confirm title in them, the said S. H. Brauer and Pauline M. Brauer, as joint tenants, to the real estate hereinabove specifically described, as against you and each of you, and to secure a Decree of Court that you have no interest in, right or title to, or lien upon said real estate or any part thereof; and for general equitable relief.

LEGAL NOTICE

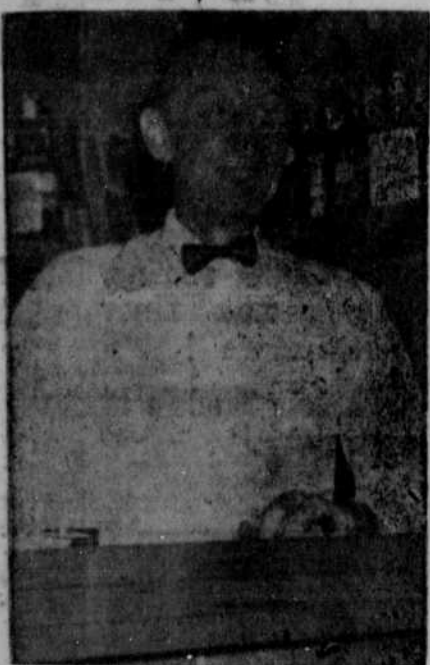
(First publication Dec. 11, 1947)

NOTICE OF SUIT

To: **B. R. Allen; B. R. Allen, Trustee; The heirs, devisees, legatees, personal representatives and all other persons interested in the estates of William S. Pierson, Nancy S. Spalding, Olivia Pierson, Julia P. Allen, and Lydia P. Dexter, deceased, real names unknown; B. O. Benington; D. F. Scott and Mrs. D. F. Scott, his wife, first real name unknown; C. C. Pond; Frank Hagerman, Sole Receiver of Valley Loan and Trust Company; Lombard Liquidation Company; Sanford B. Ladd, Frank Hagerman, Milton B. Whitney, Charles S. Fairchild, Harry E. Mooney, Receiver of Valley Loan and Trust Company; Frank Hagerman, Receiver Lombard Investment Company; M. Thompson; A. J. Millikin; T. V. Golden; and All persons having or claiming any interest in Lot Five of Section Twenty, Lots Three, Four, Five and Six and South Half of Section Twenty-one, Lot Four,**

You are required to answer said petition on or before the 19th day of January, 1948. Dated this 10th day of December, 1947.

S. H. Brauer and Pauline M. Brauer, Plaintiffs,
 By **JULIUS D. CRONIN** Their Attorney 31-34



JOHN

Come to Our Birthday Party!

WE WISH to thank our friends for the splendid patronage we have been accorded during the 7 years that SLAT'S CAFE has been operating in West O'Neill.

JUST A YEAR AGO we enlarged our facilities and The Friendly club was founded. With the club's increasing growth in popularity we have recently redecorated.

IN APPRECIATION, we are holding open-house for Friendly Club members and their guests on—

Friday, Dec. 12, 9 'Til ?

There will be singing, merriment, surprises and a congenial atmosphere. Why not make up a party and plan to help us celebrate the Friendly Club's first birthday?

SLAT'S CAFE

and The Friendly Club

PHONE 367 for Reservations In West O'Neill

AN APPEAL TO OUR ELECTRIC CUSTOMERS

Please Use No More Electricity Than Absolutely Necessary Between 5:00 P.M. and 7:30 P.M. During the Holiday Season!

Use of electricity has increased throughout the Nebraska Public Power System until the additional strain of early evenings and holiday season loads threaten to overtax generating facilities in the eastern half of Nebraska. The increased load has already reached dangerously near the maximum capacity of the power grid from which the major portion of Consumers power is supplied, and is expected to go higher.

IN ORDER TO AVOID A MAJOR POWER FAILURE, ELECTRIC USERS ARE URGED TO

1. Refrain from turning on Christmas lights, including street decorations and decorative lighting in homes, until 7:30 P. M.
2. Reduce or curtail wherever possible, use of electricity for outdoor sign and store window lighting between 5:00 and 7:30 P. M.
3. Reduce as much as possible the use of power consuming appliances and equipment in homes, stores, industries and on farms between 5:00 P. M. and 7:30 P. M.
4. Industries are urged to arrange shifts so as to close at 4:00 P. M. wherever possible, and to keep electrical use at a minimum between the hours of 5:00 P. M. and 7:30 P. M.

The serious power situation is expected to continue throughout the holiday season but is expected to ease up after Christmas. The entire nation faces a major power crisis due to increased use and inability to obtain new generating equipment. However, all agencies in Nebraska are working together to avoid a major power failure and to install new generating equipment as rapidly as possible to provide more power for Nebraska. Your cooperation during seasonal overloads will greatly help to avert a power crisis in Nebraska.

CONSUMERS PUBLIC POWER DISTRICT

UNION STORE

PHONE 56

2 Deliveries Daily

Meat Department Fruit Department

APPLES — We are proud to offer to our customers two of the best apple buys to be found in the state—

200 Bushel Bags of Golden or Red 1.49
 Delicious Apples, Each
 50 Bushel Boxes of Fancy and Extra Fancy Jonathans 2.98
 Per Box

If you're in the market for Apples — Don't miss these Bargains.

LETTUCE — 17c Lb. ORANGES — Calif. Large Size — 29c Doz.
 CELERY — 18c Per Bch, 21c to

POTATOES — Truckload of U. S. No. 1 Red Triumph. See us for potatoes.

Texas — **GRAPEFRUIT SPECIAL** — 1 Dozen Grapefruit & 1 Glass Tumbler — BOTH for 43c

Food Savings Like These are Found Only at Your UNION STORE

SPECIAL COFFEE SALE

Barrington Hall, 1-Lb. Jar 44c
 Chocolate Cream, 1-Lb. Jar 37c
 Save Money — Buy several pounds at this Low Price

BEANS — with Franks — 10c Per Can

GELATIN DESSERT 2 Pkgs. for — 15c All Flavors

PRUNE PLUMS Near Gal. Can 47c Case of 6 2.69

CANDIES & NUTS Libby's SWEET PICKLES 1-Pt. & 6-Fluid-Oz.-Jar — 48c

SEA MUSSELL Per Can — 18c Case of 24 Only — 3.79
 Blended FRUIT JUICE 46-Oz. Can Only — 23c

Libby's **DILL PICKLES** Quart Jar 36c

RAISINS — 29c 2 Lbs.

Harvest King **PUMPKIN** — No. 2 1/2 Can 18c
 Buy Your Christmas Tree — NOW! Supplies are limited

ATTENTION LOCKER PATRONS!

We have one of the finest selections of good quality **BEEF** for your locker

SEE US NOW

HAMS - HAMS PURITAN

Cudahy's - Ready to Eat

The Perfect

CHRISTMAS GIFT

Place Order NOW Supplies Are Not Too Plentiful

STEAK

SIRLOIN 49c
 T-BONE 59c
 SHORTCUTS 57c

PORK ROAST

Lean & Tender 48c Lb.

BEEF ROASTS Lb 39c

PICNIC HAMS Ready-to-Eat Cello-Wrapped Lb. 49c

American— **CHEESE** 5-Lb. Loaf 2.59

FISH—Whiting Lb. 21c