

Holt, Boyd Balk on Valuation Boosts

The state board of equalization's plan to increase valuations on all cattle except milk cows and cattle on feed and business schedules sent more than a dozen Holt and Boyd countyans to the state capitol today (Thursday) to register complaints.

Formal protests were filed on the proposed 20 percent hike on business schedules and the proposed 25 percent increase on cattle valuations. These protests were officially made by Holt county officials.

On Saturday, the state board sent notices to 29 counties, including Holt, proposing increases of their total tangible personal assessments. In a press statement, State Tax-Commissioner Robert Armstrong said that the board "felt that assessment figures were too low," and 50 counties, including Holt and Boyd, were notified to appear at Lincoln Wednesday and today (Thursday.) Holt's hearing on business increases was held Wednesday and the hearing on cattle increases was held today.

Armstrong told *The Frontier* that no action will be taken until sometime next week after the board has had an opportunity to make comparisons and analyze the information gathered at the hearings.

The sessions were held in Gov. Val Peterson's hearing rooms and no seats were vacant. Conducting the sessions were Secretary of State Frank Marsh, Treasurer Edward Gillette, and Armstrong. Gov. Peterson and Auditor Ray Johnson, other board members, were absent.

According to the proposal, 25 percent increases on cattle valuations will be made in 29 counties (including Holt and Boyd) and 15 percent in other counties.

The schedule upon which the assessment has been made by the counties were: Calves up to six months, \$10; yearlings, \$35; two-year-olds, \$45; stock cattle, \$60; milk cows, \$75; bulls, \$125. The board's proposed increases in the first 50 counties amounted to over 13 million dollars for cattle alone.

Cattle on feed and milk cows were not included in the increase. Armstrong said the reason is because the cattle on feed are being assessed at 75 percent of their market value, and the reason milk cows were not increased was that they are now being assessed much higher than other classes.

The overall increase in personal property valuations in the state will be 200 million dollars over 1946, Armstrong predicted. Abstracts from 90 counties already show a tangible property increase of 124 million dollars over last year.

Four large-scale Holt cattlemen, L. D. Putnam, Thomas Green and Dewey C. Schaffer, all of O'Neill, and Charley Peterson, of Atkinson, were among those present at today's hearing. County Attorney William W. Griffin and County Assessor L. G. Gillespie were also present.

Boyd county sent C. J. Tomek, county clerk; Walter Sire, county agent; William Brennan, county attorney, all of Butte, and Alfred Loomis, county assessor, of Spencer.

Griffin filed a formal protest for Holt county against both proposed increases. Tomek presented evidence on cattle valuations in Boyd county in relation to the approved valuations on farm machine, grain, etc., and claimed that the proposed cattle increase was not justified. Griffin, Gillespie, Putnam and Peterson were among those from Holt county heard at today's session. Walter Sire spoke at length.

CITY GOLF MEET OPENS NEXT WEEK

At least 25 entries are expected in the annual city golf tournament which will get underway next week and continue through the month of August.

M. J. ("Max") Golden, winner of the recent Country club invitational tournament and last year's city champ, is expected to lead the field in the 1947 race.

A. P. ("Scovie") Jaskowski, who is assisting with arrangements, said Wednesday that qualifying scores on either nine- or 18 holes must be turned in before August 4. Match play will begin August 5.

Rules and pairings will be posted at the clubhouse, Jaskowski said.

Skalowsky to Open Glass Firm Here

The Skalowsky Glass company, of Norfolk, an institution with 30 years' background at Norfolk, will open a branch store in O'Neill on August 1.

The O'Neill store will be managed by Kenneth Brooks, who has been with the Skalowsky firm at Norfolk for the past four years. Mr. Brooks is married and has a family.

The firm is headed by Abe Skalowsky. His son, Earl, will be a salesman in this territory, representing both stores. The firm will locate in the building on South Third street presently occupied by Harvey's Body shop.

The firm will specialize in store fronts and domestic glass. Its equipment will be "the best in north-central Nebraska," the owner said.

PICNIC DATE FIXED
EMMET—September 1 is the date set for the annual Church of the Epiphany picnic at Emmet. Rev. J. J. O'Brien announced this week.

400 Persons to Die in Nebraska Farm Accidents

This is national farm safety week. Someone has said that people are never too busy to take out time to remedy dangerous hazards.

During the current year there will be 400 deaths from accidents and 25,000 injuries on Nebraska farms. One hundred farmers will be killed at work; 125 members of the family will be killed in the home; and 175 will be killed by livestock.

County Agent A. Neil Dawes said this week that the 4-H and home extension clubs are observing the national farm safety week, July 20-27, by making "a concentrated effort to make homes and farms a safer place to live."

"To prove that accidents don't just happen," Mr. Dawes said, "the 4-H youths through safety contests are

BUS DEPOT-CAFE LOOTED OF \$119

Cash Taken During the Night; Investigation Is Underway

The O'Neill bus terminal and Tom Tom cafe, both housed in the same building, were looted of \$119 sometime between 1:15 and 7 a.m. today (Thursday.)

No solution to robbery has been made. It is believed, however, that a stranger lingered in the building while it was being locked shortly after midnight, and later escaped with the cash through a rest room window.

Baden Stamp, ticket seller, discovered the loss when he opened the depot Thursday morning. Because the cash drawer was empty, he assumed that the proprietor Donald Danbeck, had taken the cash home after closing the night before.

With Danbeck's arrival at 9 a.m., the robbery was known. The rest room window was unlocked.

Both county and city authorities are investigating.

FORMER RESIDENT DIES AT SPOKANE

CHAMBERS—Howard Clinton Grimes, a former resident of the Chambers and Amelia communities, died Saturday in Spokane, Wash., less than a week after being stricken by an apoplectic stroke.

Funeral services were held Tuesday in Spokane.

The late Mr. Grimes left Holt county about 35 years ago. He formerly operated a produce station at Amelia and Chambers.

Survivors include three brothers, Clair, Glee and James, all of Chambers.

400 Persons to Die in Nebraska Farm Accidents

This is national farm safety week. Someone has said that people are never too busy to take out time to remedy dangerous hazards.

During the current year there will be 400 deaths from accidents and 25,000 injuries on Nebraska farms. One hundred farmers will be killed at work; 125 members of the family will be killed in the home; and 175 will be killed by livestock.

County Agent A. Neil Dawes said this week that the 4-H and home extension clubs are observing the national farm safety week, July 20-27, by making "a concentrated effort to make homes and farms a safer place to live."

"To prove that accidents don't just happen," Mr. Dawes said, "the 4-H youths through safety contests are

VOLUME 67.—NUMBER 11.

O'NEILL, NEBRASKA, THURSDAY, JULY 24, 1947.

PRICE 5 CENTS

HOLT LEVY IN SLIGHT INCREASE

Proposal on Budget Calls for .30-Mills Boost Over Last Year

A relatively slight mill levy increase will be required to run Holt county's business during the new fiscal year, July 1, 1947, to June 30, 1948, according to a summary of the county budget released this week by County Treasurer J. Ed Hancock. Last year's county levy was 3.20-mills; the new levy as proposed by the board of supervisors is .30-mills higher, or 3.50-mills.

While the actual costs of running the county will be considerably higher, most of the increase will be absorbed by higher valuations and reserves in the principal accounts.

A hearing on the proposed budget will be held Wednesday at 10 a.m. at the courthouse here. Any objections, suggestions or corrections will be heard by the board at that time. Final approval of the budget will not be made until after next week's hearing.

Hancock is serving for the third year as Holt's budget-making authority. He points out that the county's healthful financial status has enabled the county to undertake another year's operation without the burden of a greatly increased levy.

However, because Holt's overall valuations are up nearly two million dollars, considerable more revenue will be derived in comparison with last year.

The state levy, not yet announced, holds the key to the present tax picture.

Sharp increases in estimated general fund and road and bridge fund requirements will be noted in a study of the table elsewhere on this page. "Most of the general fund increases are in the supplies," Hancock said.

Flood damage this summer caused extensive damage to the county's highways and the increased maintenance and repair requirements will not begin to solve the road problem, the officials said.

ATKINSON BOOSTERS COMING THURSDAY

Atkinson's hay days boosters, accompanied by a band, will appear in O'Neill's business section at 8 p.m. next Thursday. It has been announced by the advertising committee.

The annual Atkinson celebration will be held August 4 and 5.

The boosters will be at Emmet at 1:20 p.m. the same day as the O'Neill visit.

NO BAND CONCERT

There will not be a concert by the Municipal band Saturday night, it has been announced by Director Ira George. However, there will be a practice August 1 and the group will march and play in the streets on August 2.

MARRIAGE LICENSES

Lowell William Lane, 21, and Norma Jean Fox, 19, both of Page, July 24.

Budget and Levy Comparisons

Funds	Requirements		Levies	
	1946	1947	*1946	**1947
General fund	\$ 95,025	\$106,35	2.40	2.20
Bridge fund	19,000	40,000	.20	1.06
Bridge-road	20,000	31,000		
Road	75,700	77,500	.50	.14
Road dragging	3,500	14,800		
Unemployment relief	9,500	13,000		
Soldiers' and sailors' relief	400			
County fair	2,000	2,500	.10	.10
Mothers' pension	500	1,071		
Tax sale foreclosure	1,000			
Inheritance tax	5,375			
Mail route graveling		10,000		
Veterans' service comm.		2,526		
Postwar road machinery		8,000		

* This is the actual levy for the last fiscal year.

** Proposed levy for the new fiscal year. (May be revised downward before adopted pending action by the state board of equalization. (See story in upper-left-hand corner.)

POLIO OFFICERS ARE RESIGNING

Holt Chapter Must Select New Leaders in Annual Meeting

A complete new staff of officers will have to be elected at the annual meeting next Thursday of the Holt county chapter of the National Foundation for Infantile Paralysis. All of the present officers have filed their resignations, effective on that date.

The meeting will be held at the assembly room in the Holt county courthouse at 3 p.m. Secretary James W. Rooney, of O'Neill, said.

No specific explanation for the mass resignations was offered, but one member of the executive committee, who declined to be quoted, predicted that "it would take a bad epidemic of polio in the county to wake everyone up so that they will take an active interest in the chapter."

Secretary Rooney said, "It is the desire of the retiring officers that there be a large attendance at the annual meeting."

Reports of expenditures, approved by the executive committee, will be made. Seven infantile paralysis victims have been aided by the chapter during the past three years. A total of \$3,448.82 has been spent for surgery, medical assistance, hospitalization and transportation.

Statement Issued

Concerning the mass resignations of the retiring officers issued the following prepared statement: "Contributions from the people of Holt county have been generous in past years. Those who have solicited funds have contributed freely of their time. With the exception of the officers and the executive committee members, very few people have ever attended the annual meetings.

"All contributors to the annual fund-raising drives are considered members," the statement concluded.

The retiring officers are: Mrs. Dewey C. Schaffer, O'Neill, president; Mr. Rooney, secretary; and E. C. Quinn, of O'Neill, treasurer.

SALON OPENS

Donna Humpal and Melcina Martin, beauticians, this week announce the opening of the O'Neill Beauty Salon on Saturday. Their salon will be located on Douglas street, directly across from the M & M cafe.

LAND SQUABBLE TO BE SETTLED

Leaseholders Will Be Heard at Lincoln on August 11

The members of the Holt County School Land Leaseholders association are in a quandry.

They have been advised by the state board of educational lands and funds that the board will grant a hearing to a Holt delegation on August 11 in which the delegates will protest what they consider to be a "sharp increase" on the valuation of Holt's 77,000 acres of school lands.

In the meantime, however, Hugh Dillon, the state surveyor and agent for the state board, has ordered the Holt county treasurer to increase the valuations 70 percent, effective July 1.

Ira L. Watson, of Inman, president of the Holt organization, termed the hearing a "mocker."

"It's like going into court with the jury's decision already handed down and on the record," he said.

The controversy over the valuations in Holt began in June when Dillon told an audience of leaseholders here that the valuations would be increased 84 percent. Formal complaints followed the announcement and before leaving O'Neill Dillon told Watson that he would revise the overall increase downward to 70 percent. The proposed increase followed an 85 percent hike in 1945 and another four years earlier.

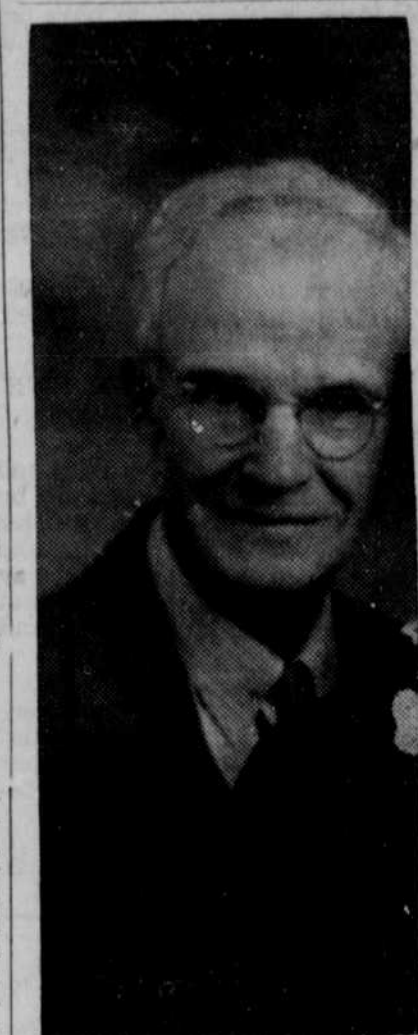
Officers of the Holt association went to Lincoln for a scheduled hearing July 11 and discovered the 70 percent increase had been already approved by the board.

As a result of the trip, Board Secretary Henry Bartling, of Lincoln, said that a new hearing will be granted August 11. At that time protests from Cherry county will also be heard. Cherry counts over a quarter-million acres of school land.

County Treasurer J. E. Hancock, in commenting on his instructions from the state capitol, said he intended to withhold the new valuations from the Holt county books until after the August 11 hearing.

An increase of 333 thousand dollars in school income can be expected from the increases that were made over the state, Bartling explained.

Hail Strikes 3d Time in Year



George A. Coventry, home-sited in Canada.—O'Neill Photo Co.

GEORGE COVENTRY BURIED AT INMAN

Holt Resident Since 1904 D'es Friday in Family Home

INMAN — George A. Coventry, 76, a longtime resident of the Inman vicinity, died at 10 p.m. Friday at the family home here. He had been in good health until that day.

Funeral services were held at 2 p.m. Monday at the residence in Inman with Rev. E. B. Maxcy, of Glerwood, Ia., formerly of Inman, officiating. Interment was in the Inman cemetery under the direction of Garfield lodge AF&AM 95, of O'Neill.

Born at Schuyler on February 20, 1871, Mr. Coventry grew to manhood in Nebraska and went to Alberta, Canada, in 1891 to home head. He and the former Miss Mina Jane Smith were married at the home of the bride's parents, near Olds, Alberta, on December 23, 1896. They began housekeeping on a homestead near there and in June, 1904, they moved to a farm six miles south of Inman.

Back to Nebraska
In the fall of 1913 the family moved into Inman where Mr. Coventry resided until his death. Between 1914 and 1918 he was a partner in the Watson & Coventry store.

The Coventrys became the parents of two sons and three daughters. They are: James and Kenneth Coventry, both of Inman; Mrs. Sherman Graizer, of Jefferson City, Mo.; Mrs. James McMahan and Mrs. Kenneth Smith, both of Inman.

Survivors, besides the widow, five children, 17 grandchildren and two great-grandchildren, include four sisters: Mrs. Janne Sprecker, of Los Angeles, Calif.; Mrs. Mary Mapes, of Fremont; Mrs. Jessie Brillhart, of Hastings and Mrs. Carrie Tompkins, of Albion.

The late Mr. Coventry and his wife celebrated their golden wedding anniversary in December, 1946, with an open-house affair and a family gathering. At that time both were enjoying "excellent health."

Ballbearers at the interment rites were J. E. Davis, A. B. Hubbard, A. E. Bowen, H. L. Lindberg and Clinton Getz all of O'Neill, and Karl L. Keyes, of Inman.

C. J. TOWLE NEW C&NW RAIL AGENT

C. J. Towle, of Albion, is the new agent here for the Chicago and North Western railroad company, assuming his new duties Wednesday. He succeeds A. B. Neuwander, who held the position for several months but relinquished the job to return to Atkinson.

The unfavorable housing situation was given as the reason for the decision. Mr. Towle has spent the past five years at Albion. Previously, he had been stationed at Newport.

He is married and has two sons, Gerald, 25, of Norfolk, and Dean, 20, of Lincoln, a student at the University of Nebraska. Mrs. Towle is here with her husband.

Corn Crop Virtually Wiped-Out Between O'Neill and Eagle

A combination wind and hail storm struck the territory north of O'Neill late Saturday, reducing crops in isolated areas in northern Holt and Boyd counties. Some farmers suffered hail loss for the second and third time this season.

In Boyd county a half-dozen localities reported greater damage than in either of two previous storms.

Among those hardest hit by hail were the farms occupied by Sam Robertson, William Langan, E. W. Reed, and Lloyd Whaley, and Garret D. Janzing.

Some of the small grain was pounded so badly that farmers have abandoned plans for cutting. In a corridor stretching from six miles north of O'Neill to Eagle creek the corn crop is virtually wiped-out.

The hail was accompanied by a high wind that assumed the violence of a small twister. At the Dave Bellar place the barn was wrecked and the house was damaged. Shingles were torn from the building and a wall was smashed.

At the Janzing place a large cattle shed was removed completely from its foundation and the debris was strewn over a quarter-mile. John Pruss lost two buildings and the Henry Winkler house was damaged. A large barn on the Bernard Pongratz place was destroyed and a windcharger was toppled down at the Casper Winkler farm.

There were varied reports of damage to windmills and fences. Many stacks of alfalfa were blown down and owners of haystacks have reported losses.

The city of O'Neill escaped the path of the storm. The wind struck here at 9:30 p.m. and a rain followed, netting .23-inches. Boyd county was visited by rain twice during the night and the official gauge at Butte reported 1.10-inches.

The week's weather summary, based on 24-hour readings at 8 a.m. daily, follows:

Date	Hi	Lo	Moist.
July 18	85	54	
July 19	77	54	.40
July 20	84	60	.28
July 21	79	50	.33
July 22	77	53	
July 23	75	59	
July 24	81	60	
Totals			1.01

ORCHARD YOUTHS ARE INJURED

ORCHARD—Ronnie Wirth, 14, son of Rev. and Mrs. P. J. Wirth, is in a Sioux City hospital with severe injuries, and Gordon Walton, 13, son of Mr. and Mrs. Leonard Walton, suffered a severe cut on the top of his head when the two boys were bounced out of a truck while enroute home following a swimming excursion.

The two youths were in the back end of a paint truck driven by Melvin Dixon.

Young Wirth suffered a fracture of his right leg between the hip and the knee and was badly battered and bruised. He is also suffering from shock and blood loss.

Young Walton was taken to the Orchard hospital for treatment.

Rev. Wirth is known in O'Neill, having served for many months as vacancy pastor at the Christ Lutheran church.

WADE RENAMED LEGION HEAD

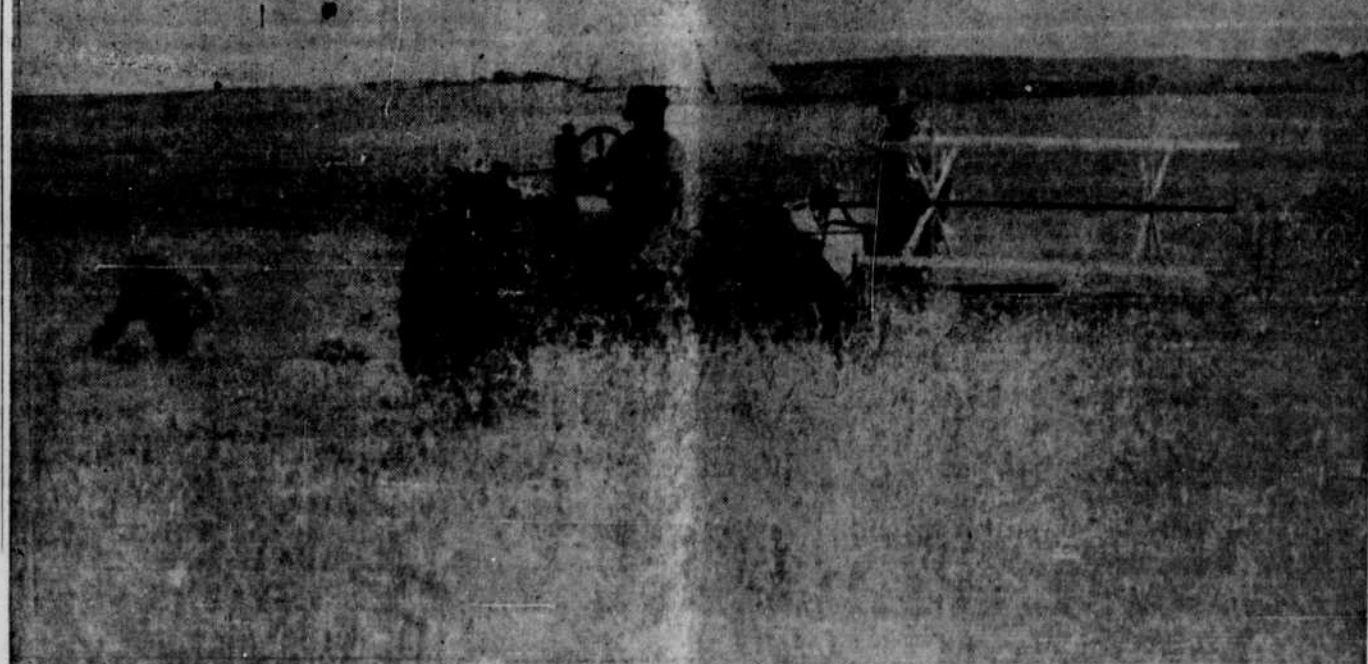
Glea H. Wade, O'Neill fruit salesman and a veteran of World War II in the Pacific, was re-elected commander of Simonson post 93 of the American Legion in the annual election of officers held Friday night.

Wade was wounded four times during three years with the 37th infantry division. Others named were: Ned Porter, vice - commander; Francis Murphy, sergeant-at-arms; P. B. Harty, chaplain.

Elected to the executive committee were Leo Carney, John Grutsch, Stephen A. Price, Elgin Ray, and Melvin Ruzicka.

The officers will not begin the new year until after the annual state convention. Friday's meeting was held in the clubrooms at the Legion's new hall on Douglas street. Although not yet completed, the election was the first formal use of the building.

Mr. and Mrs. J. L. McCarville returned Tuesday after a three-days' buying trip to Omaha and points in Iowa.



HARVEST GETS UNDERWAY

This scene has been reenacted scores of times during the past week in the O'Neill region as the harvest gets under way. Despite

reversals from a late spring, frost, wind, hail and floods, Holt's small grain crop is generally good. This photograph was taken in the Elkhorn river valley.