

Inman Nicks St. Marys 23-21 in Third Overtime Period



**Eagles Swamp Neligh 40-16;
Page Dumps Cardinals 19-16**

**Inexperienced Warriors
No Match for Smooth
Saindon Crew**

The O'Neill high Eagles held up their end of a doubleheader here Friday night as Coach F. E. Saindon's well-oiled basketball quint rolled to an easy 40-16 win over a smaller, inexperienced Neligh team.

Saindon's kids established themselves as the superior team in the early minutes and all substitutes were used freely after the beginning of the second period.

Center Bob Matthews looped in 13 points to lead the O'Neill scoring. Forward Ike Saindon was limited to nine points by a promising warrior soph named Jodie Scofield.

Both Neligh and O'Neill displayed girl baton-twirlers in an intermission show. The knatty Neligh uniforms as well as the performance of all the twirlers won the approval of the crowd.

The boxscore:

O'NEILL (40)	fg	ft	pf	pts
Saindon, f	3	3	1	9
Hartman, f	0	0	1	0
Tibbetts, f	2	3	1	7
Rickly, f	0	1	1	1
Matthews, c	6	3	3	15
Osborne, c	0	0	0	0
Filkins, g	1	0	0	2
VanEvery, g	2	0	2	4
Hungerford, g	1	0	2	2
Caikins, g	0	0	0	0
Bright, g	0	0	0	0
Totals	15	10	11	40

NELIGH (16)

fg	ft	pf	pts	
Eagle, f	0	1	2	1
VanKirk, f	0	1	3	1
Ceil, f	1	1	1	3
Longpecker, f	1	0	1	2
Cofield, c	1	0	4	2
Michaelson, c	0	2	0	2
Peterson, g	2	0	3	4
Marshall, g	0	0	1	0
Hollenbeck, R., g	0	1	0	1
Hollenbeck, G., g	0	0	0	0
Totals	5	6	15	16

Visits in Sioux City — INMAN—Mrs. Tom Hutton returned from Sioux City, Friday where she spent a few days with her daughter and son-in-law, Mr. and Mrs. Vernon Green and children.

Money to Loan
ON
AUTOMOBILES
TRUCKS
TRACTORS
EQUIPMENT
FURNITURE
Central Finance Co.
C. E. Jones, Manager
O'NEILL, NEBRASKA

Sageser — Robertson — Shaffer
4th Annual Sale Registered
Hereford Bulls
at the
ATKINSON LIVESTOCK MARKET
Atkinson, Nebr.
Thursday, January 23
1 O'CLOCK P.M.
65 HUSKY BULLS
Serviceable Ages — Mostly 2-Year-Olds
Here is a dandy lot of high quality herefords. The breeding includes Real Domino, Pioneer Lad, Futurity Mischief, Advance Brummell, and Spartan Lamplighter.
For Sale Catalog Write
Ernie Weller, Auctioneer, Atkinson, Neb.

**Intracounty Competition
Hits Season's High
in Thriller**

Intracounty basketball competition hit a new high for the season here Monday night as the unbeaten Inman Tigers and the St. Mary's Cards were not content to do battle for the conventional time but extended their fiasco into three extra periods, Inman finally winning 23-21 on the "sudden death" rule.

The regular playing time ended with the count knotted at 17-17. In the first overtime, St. Mary's Guard Terry Tomjack and Inman's Center Max Mossman connected on long shots, boosting the count to 19-17 and sending the contest into a second overtime period. Again Tomjack and Mossman caged long fielders that kept their respective teams in the game.

In the third overtime, Guard Bud Sholes potted a well-aimed shot that ended the show.

Lanky Ed Hynes was St. Mary's only performer who could match Inman's height superiority. Hynes turned in a good defensive game. It was the seventh-straight triumph for the Tigers.

There were two preliminary games. In the first, Inman graders were dumped 6-11 by the academy graders. The reserve teams fought to a 21-16 decision for Inman.

The boxscore of the main event:

INMAN (23)	fg	ft	pf	pts
Heck, f	0	2	0	2
Clark, f	1	0	0	2
Hartington, f	2	2	1	6
Totals	3	4	1	10

ST. MARY'S (21)	fg	ft	pf	pts
Hickey, f	1	1	3	3
Miles, f	2	1	4	5
Hynes, c	0	0	2	0
McNichols, c	1	1	5	3
Marne, g	1	0	2	2
Tomjack, g	1	1	0	3
Totals	6	4	16	16

Referee: Kelly Saindon (York), O'Neill.

Sholes, f	0	0	0	0
Mossman, c	4	0	1	8
Sobotka, c	0	0	0	0
Blake, g	0	1	2	1
Hutton, g	0	0	0	0
Bud Sholes, g	2	0	1	4
Gannon, g	0	0	0	0
Totals	9	5	5	23

ST. MARY'S (21)	fg	ft	pf	pts
Hickey, f	1	0	2	2
DeBacker, f	0	0	0	0
Miles, f	2	1	3	5
Hynes, c	0	0	2	0
McNichols, c	1	0	2	2
Marne, g	3	0	0	6
Bahn, g	0	0	0	0
Koci, g	0	0	0	0
Tomjack, g	3	0	4	6
Harty, g	0	0	0	0
Totals	9	1	13	21

**INMAN TIGERS
WIN 6TH STRAIGHT**

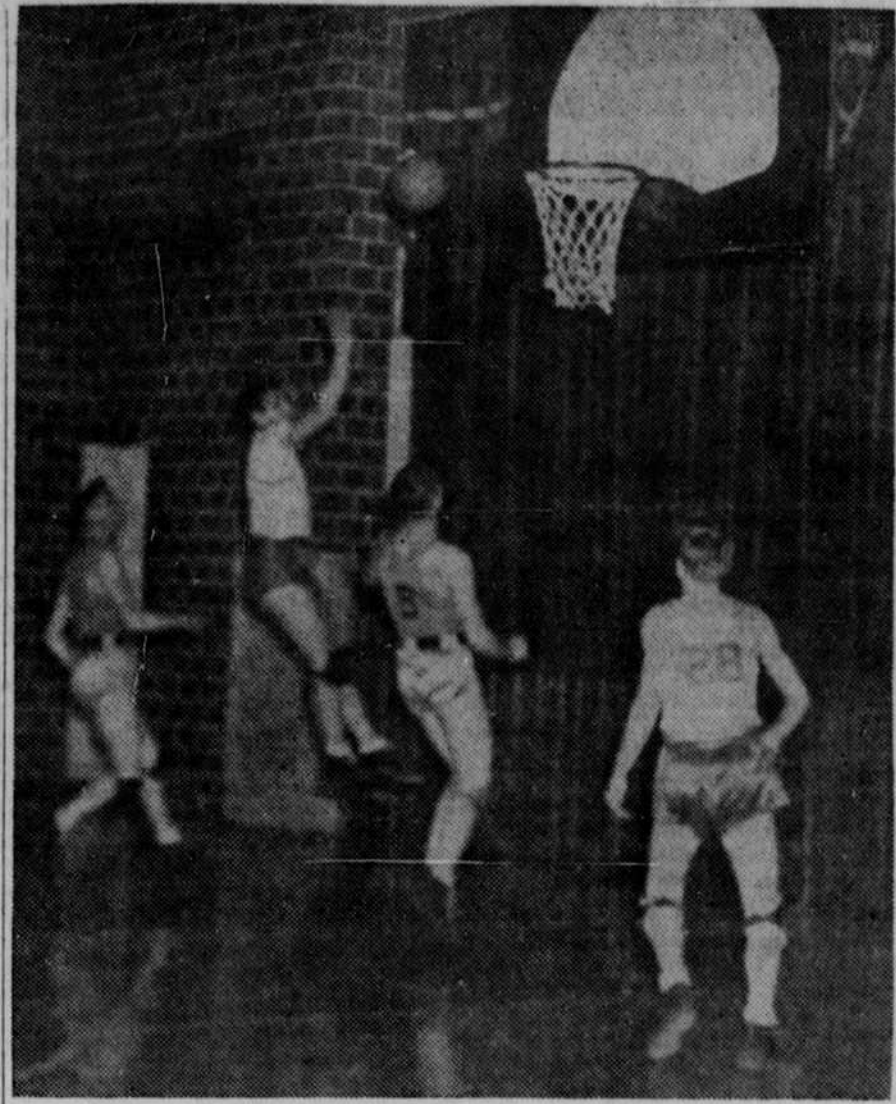
INMAN — The Inman Tigers eked Orchard 34-31 January 7 at Orchard is a cage tilt that was tightly contested all the way.

This was the Tigers' sixth straight win without a setback. Delmont Heck was highpoint man for Inman, grabbing 11. Schluesner led Orchard with 12.

A large delegation of Inman fans followed the Tigers to Orchard.

**Chambers Bops
Erickson 44-14**

CHAMBERS — The Chambers Coyotes found easy prey Friday night in the visiting Erickson high basketballers, winning 44-14.



TOMJACK TALLIES

St. Mary's Guard Jerry Tomjack pushes-up a two-pointer during the St. Mary's-Chambers game here January 7 in which the academy quintet won 29-24. With back to the

camera is Center Dick McNichols. Under the basket is Chambers' Guard Walter. The Chambers player in the background is unidentified.—The Frontier Photo by John H. McCarville.

PIONEERS 30 YEARS
AND STILL LEADING THE WAY
WITH AMERICA'S BEST
FARM AND RANCH LOAN
LONG TERM—LOW INTEREST
PRE-PAYMENT PRIVILEGES
No Fees
Get Your
LAND BANK LOAN
through your
ELKHORN VALLEY
National Farm
Loan Association
LYLE P. DIERKS
Secretary-Treasurer
O'Neill

DANCE
At
SUMMERLAND
Ewing
Sunday, Jan. 19
Music by
SAMMY HAVEN
and His Band

To America's Producers, America's Thanks!



As this new year begins, America's ranchers and farmers are busy with their winter work—feeding and caring for their livestock. And all America is again properly grateful to you who produce the food to keep us the world's best fed people.

To you who ride the range from Montana to Texas . . . whose teams and tractors till the nation's fertile acres . . . who have labored hard, long hours . . . who, with soil and seed, sunshine and rain, grass and grain, have achieved miracle after miracle of food production—to you America gives thanks! Thanks for the part you have had in all-time record crops of wheat and corn . . . for bumper yields of small grains . . . for livestock numbers at high levels . . . for soaring dairy and poultry production. This abundance of food which you have produced means better nutrition for millions of families—

because good nutrition is just good food that's good for you.

Vital as it is, production is only part of the nutritional job. Food must be processed. It has to be transported from surplus-producing areas to the markets where there are great numbers of people to eat it. Here is where Swift & Company comes into the picture. It's our job to provide many of the services required in bringing the foods which you produce to the dinner tables of the nation. Together we are in a vitally important industry. Because nutrition is our business and yours, together we can help build a stronger, healthier America.

Things are NOT always as they seem

A 1-inch pipe and a 4-inch pipe run water into gallon pails. It seems as if the 4-inch pipe would fill 4 times as many pails in a given time. The truth is that it will fill 16 gallon pails while the 1-inch pipe is filling one.

When you read something like this: "Meat in commercial storage on January 1 was about 590,000,000 pounds", it sounds like a lot of meat.

Meat Packers' Risks

Meat is perishable. It cannot be held for prices to go up. Like all meat packers, Swift & Company must sell, within a few days, this perishable product for what it will bring—no matter what price we paid for it.

We take risks in both buying and selling. In buying livestock the meat packer must pay the price established by competitive bidding of over 26,000 slaughterers. If the meat packer overestimates the quality of an animal, or the amount of meat the animal will produce, or the market demand for the meat, he will lose money. Hidden bruises, wounds, or other defects can create losses on any animal.

In selling, the meat packer must also follow the market trends established by those who buy the meats. He stands the risk that meat demand will fall off and prices decline between the day he buys the livestock and the day he sells the meat—also the risk of accidents and delays in transit which can wash out his profit.

An average profit of less than 2% on sales is a small return for taking these substantial business risks.

F.M. Simpson
Agricultural Research Department

Soda Bill Sex:
... that labor saved is money made.
... speak well of your enemies—you made them.

He Puts the NEW in Nutrition

We'd like you to meet a Swift scientist, Dr. H. W. Schultz. He is head of the nutrition division of our research laboratories. The work of Dr. Schultz and his associates is mighty important to all of us in the livestock-meat industry. They develop new products which open new markets for meats. This widens outlets for your livestock.

Dr. Schultz is the father of three children. As a scientist he knew growing children needed the body-building proteins of meat. As a father he knew the trouble of scraping and straining meats for the baby and dicing meat for the older children. An idea was born: perhaps Swift & Company could discover a way to prepare canned meats suitable for babies. A research project was undertaken. The scientists went to work!

The research took more than two years. The Swift people consulted with leading doctors, child specialists. They agreed that special meats for babies would be a good thing. Many methods of preparing various kinds of meats were tried. Hundreds of feeding tests were made by families with small children. Finally, six kinds of meat were approved by the doctors, nutritionists, mothers, and the babies themselves. Placed on the market in test cities, these products won immediate acceptance. They are now being sold in many cities, and facilities for their manufacture are being expanded.

These new products—strained and diced meats for babies—create a big new market for meats. There are millions of baby appetites to satisfy.

OUR CITY COUSIN

City Cousin, fresh from town, Says the wether gets him down.

Martha Logan's Recipe for Navy Bean Soup

1 pint dried navy beans	1/2 teaspoon salt
2 quarts water	1/4 teaspoon pepper
1 cup sliced onion	1/4 teaspoon dry mustard
1 cup diced celery	2 tablespoons flour
3 tablespoons butter	4 frankfurters

Soak beans in water for several hours or overnight. Drain, add water. Fry onion and celery in butter. Add to beans, simmer 3 to 4 hours or until beans are soft, adding more water as water cooks away. When tender, save out 1 cup beans. Rub other beans through sieve. Reheat to boiling point. Add seasonings and flour mixed with 1/4 cup water. Garnish with hot sliced frankfurters and whole beans. Yield: 4 servings.

Know—Don't guess—in 1947
by Tyrus R. Timm
Texas A. & M. College

An adequate record book is an extremely useful and valuable tool. It usually pays good dividends for the few minutes it takes out of the day's work to keep it up to date.

Specifically, a record book helps a farmer or rancher:

- Operate in a businesslike way.
- Learn more about the details of his business than ever before.
- Know exactly how much he is making from his land and his work.
- Find out the weak spots in his enterprises.
- Tell whether or not his operations are working out as planned.
- Prepare a plan for future operations.
- Itemize investments, receipts, and expenses.
- Figure the efficiency of his production methods.
- Provide a record of all business transactions.
- Keep track of bills owed by or to the farm or ranch.
- Establish a sound basis for credit.
- Comply with government programs.
- Prepare income tax returns.

There are farm and ranch record books especially prepared for each state which can help you save time and money. Write to your state agricultural college and obtain one. Properly used, it will give you a better understanding of your business and may open the way to increased profits.

SWIFT & COMPANY
UNION STOCK YARDS
CHICAGO 9, ILLINOIS

NUTRITION IS OUR BUSINESS—AND YOURS
Right Eating Adds Life to Your Years—and Years to Your Life