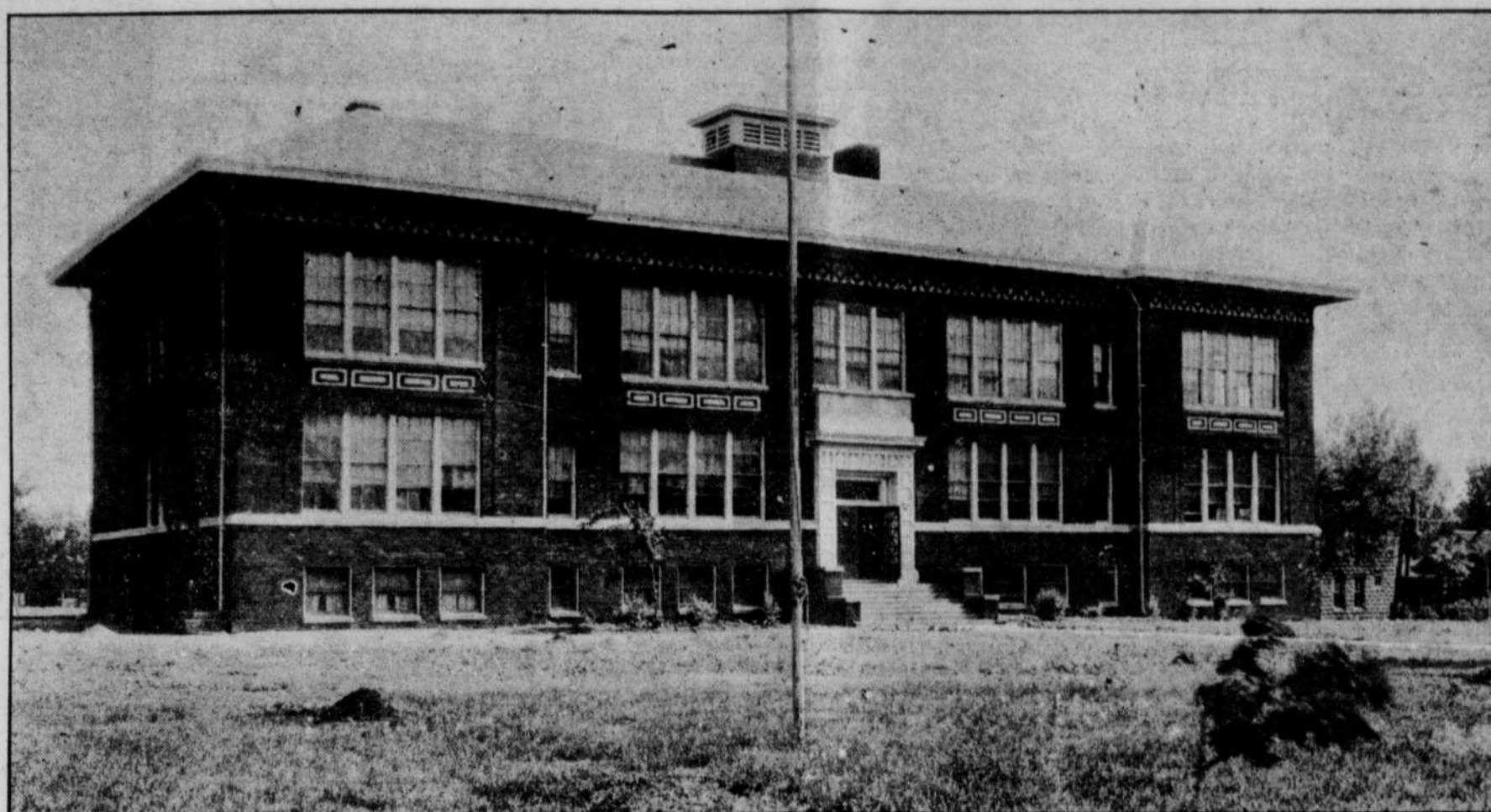


O'NEILL HIGH SCHOOL

MEMBER OF NORTH CENTRAL ASSN. OF COLLEGES AND SECONDARY SCHOOLS

Faculty

F. E. Alder, Superintendent
Mathematics
C. F. Grill, Principal
Mathematics & Social Science
Ira George, Band & Social Science
Marjorie Graybill, Vocal Music
Social Science
Elmer Stolte, Athletics
Science
Harold Connors, Assistant Coach
Commercial
Mildred Miller, Normal Training
Latin
Alfred L. Mathis, Smith-Hughes
Agriculture
Virginia Johnston, English
Dramatics
Lois Giles, Home Economics,
English



Board of Education

President
DR. H. L. BENNETT
Vice President
B. T. WINCHELL
Secretary
ANNA L. O'DONNELL
DR. L. A. BURGESS
H. J. BIRMINGHAM
GEORGE SHOEMAKER

With Its Larger Faculty, New Building, Modern Curriculum, Superior Equipment, And Excellent Opportunities For Participation In Student Activities, the O'Neill High School Is Launching the Greatest Year In The History Of The Institution.

Opening Date Will Be Announced Later

"THE NEWER AIM IN EDUCATION"

F. E. Alder, Superintendent of Schools

THE modern view point requires that the schools interpret education not as a process of teaching facts only, but as a process of developing personality, skills, and character. Of course facts must be thoroughly taught as a basis for these other elements, but education based on facts without the desired skills that go along with them or the attitudes of mind which lead the individual to pursue his vocation skillfully and with energy and enthusiasm are of but little value.



F. E. ALDER
Superintendent of Schools

The faculty of O'Neill High School has been selected with attention to this kind of teaching. Different instructors are expected to make a definite contribution of facts in their own fields, but this is not all; they must have skill in developing character, personality, social traits, and other desirable qualities in the individual.

Courses of Instruction

VOCATIONAL AGRICULTURE

THIS course prepares students to engage in the business of farming. Students who take the required Smith-Hughes agriculture courses plus economics, advanced social science, accounting and typing will be issued a special diploma showing their graduation from the department of vocational agriculture. Smith-Hughes agriculture courses may be selected as electives by boys who feel the need of such training but who wish to graduate from some other course.

COMMERCIAL COURSE

THIS is a four year high school course and prepares students for participation in business life.

SECRETARIAL COURSE

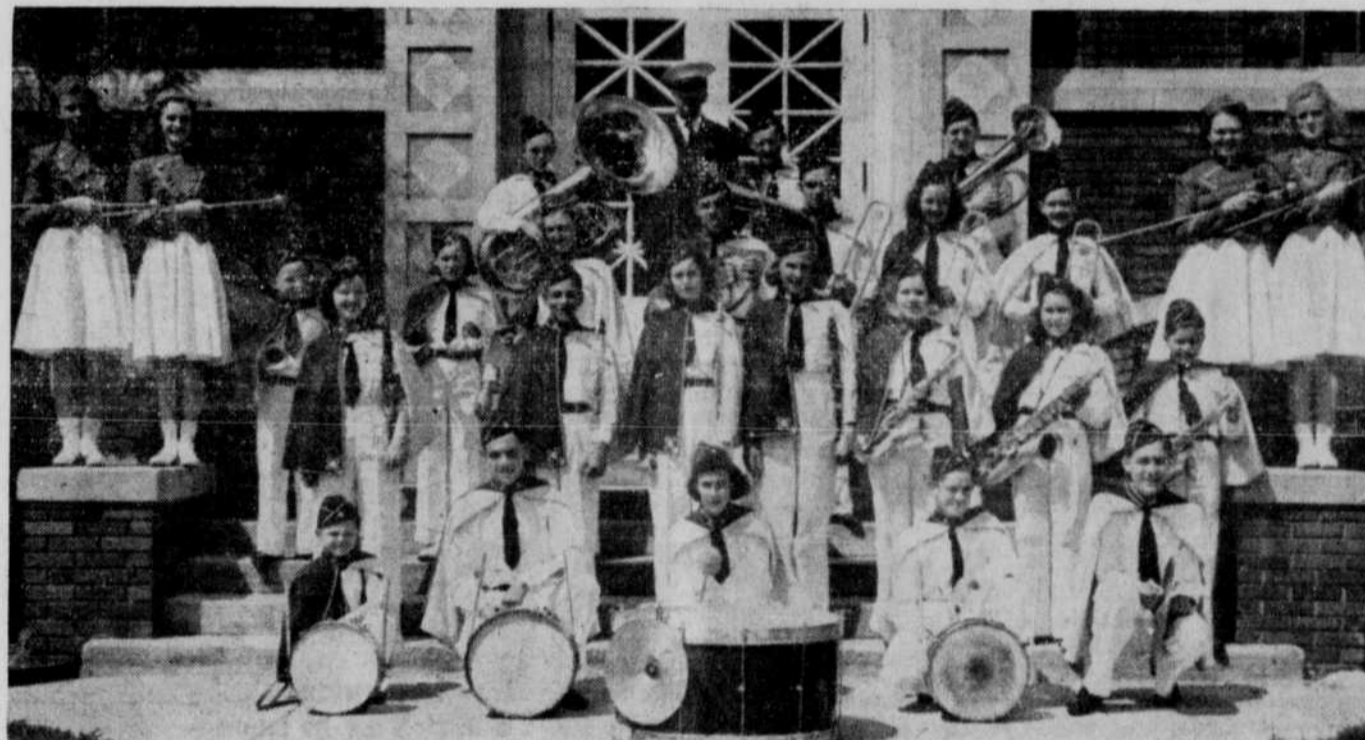
THE secretarial course includes the commercial course but requires in addition at least two years of typing and shorthand to prepare for stenographic work.

HOME ECONOMICS COURSE

THE home economics course presents instruction in sewing, cooking and home-making. This course will emphasize the development of those skills so desirable in making a "house a home."

In order to allow time for completion of the new addition it is necessary to postpone the opening of school. The usual vacations will be shortened to make the closing date about the usual time.

O'Neill High School Band



THE reputation of Mr. Ira George as a band leader and instructor in instrumental music is well known. In one year Mr. George has developed one of the finest bands North of the Platte. The O'Neill High School band meets daily for a period of playing under Mr. George's direction and in addition two periods a week are devoted to individual or small group instruction. This instruction is free. Students who desire may take private lessons.

DRAMATICS AND SPEECH

NO high school activity will do more to free the personality of boys and girls than dramatics and speech work. For this department the board of education has secured the services of Miss Virginia Johnston of Roodhouse, Ill. Miss Johnston is cum laude graduate of Duchesne college with majors in English and dramatics.

ATHLETICS

THE reputation of the O'Neill High School in football is unexcelled in northern Nebraska. This year Coach Elmer Stolte will have the able assist-

ance of Harold Connors and Dorlan Lockman. O'Neill's fine, new gymnasium with a seating capacity of seven hundred should promote the development of basketball. The O'Neill High School has scheduled games with the very best teams in northern Nebraska particularly Albion, Wayne and Pierce. Participation in athletics will afford boys the much desired and beneficial opportunity for traveling. The wide experience offered by athletic participation, the physical development, and the sportsmanship learned in playing the game make athletics a very worthwhile educational activity.

SMITH-HUGHES AGRICULTURE

Alfred L. Mathis, Instructor

MR. MATHIS is a native of western Nebraska and a graduate of the College of Agriculture of the University of Nebraska. Last year he taught Smith-Hughes Agriculture at Lewiston, where he did much valuable work in building up the department.



ALFRED L. MATHIS
Instructor of Smith-Hughes
Agriculture

With the introduction of Smith-Hughes work at O'Neill Mr. Mathis was elected by the board to head the department. He is very busy, just now, meeting boys who are interested in the new course. A card to him or Superintendent Alder will bring him to your place for a conference.

O'Neill is proud of the opportunity of rendering this new and desirable educational service to its rural patrons. Our high school belongs to the rural students as well as our own and it is our desire to render the most worthwhile service possible.

Courses of Instruction

COLLEGE PREPARATORY

THIS course prepares students to enter college. It may be combined with normal training, Smith-Hughes agriculture or home economics. Some of the commercial subjects may be elected by college preparatory students who feel the need of such courses to broaden their training.

NORMAL TRAINING COURSE

THE normal training course is outlined by the state superintendent of public instruction. Students completing this course and passing the required examinations are prepared for rural teaching.

VOCAL MUSIC

THE O'Neill high school has secured the services of Miss Marjorie Graybill, who has a major in voice from Nebraska Wesleyan University. Miss Graybill has a fine soprano voice and is a delightful soloist. It is expected that the voice groups of the O'Neill High School will be as outstanding as the band.

Students who have not already registered may do so when school opens. Students who registered last spring may make such changes as they find necessary.

For Further Information Write or Call-
F. E. ALDER, Superintendent of Schools