

Royal Theatre, O'Neill Sunday and Monday, June 15-16



MAURICE CHEVALIER
The Love Parade
AN ERNST LUBITSCH PRODUCTION

JEANETTE MACDONALD
LUPINO LANE LILLIAN ROTH

LOCAL NEWS

Dale Bressler left for points in Iowa, Tuesday on a business trip. Miss Grace Joyce, deputy county clerk, is enjoying her annual vacation. The old boilers are being removed from the engine room at St. Mary's Academy. The luncheon as usual at the Golden Hotel for their noon luncheon last Tuesday. Billy Griffin is clerking for his uncle, G. E. Morgan in the hardware store at Atkinson.

A marriage license was issued on June 7th to Richard Jarman and Miss Lenora Smith, both of Chambers. Mrs. Pete Hereford, son Bennet, and Mrs. Harry Bowen drove to Lincoln, Wednesday for a few days' visit. Mr. and Mrs. Robert Davidson are the parents of a pair of twins—a boy and girl, born to them last Monday. Mr. and Mrs. Percy Watenpugh drove to Lincoln, Wednesday where they will visit relatives for a few days. Someone stole the spare tire from R. R. Morrison's sedan while it was parked in front of the store, Tuesday evening. Miss Florence Roseler came home from Omaha last Sunday morning where she has been studying to become a nurse. Miss Margaret Welsh came home last Monday from Lincoln where she was graduated from the State University, recently. Mr. and Mrs. Surber returned home Friday from an auto trip which took them to points in Colorado and western Nebraska. A reception was given Rev. H. D. Johnson and family, Monday evening at the Presbyterian church. Rev. Johnson is the new pastor. W. T. Hayes, one of the old settlers of the county and one of Atkinson's most prominent citizens, was visiting in the county hub, Wednesday. Glen Anderson was fined \$500 and costs and given a thirty day jail sentence by Judge R. R. Dickson a few days ago, for the possession of liquor. Mrs. H. J. Hammond arrived home Thursday morning from the Mayo hospital in Rochester, Minnesota. She visited with relatives in Omaha enroute. C. C. McElvain and wife, of Fairmont, Nebraska, spent a few days with his parents, Mr. and Mrs. W. T. McElvain and other relatives here last week. Mr. and Mrs. A. P. Strube, daughter, Miss Violet and Master Richard spent Friday and Saturday visiting with relatives in Scribner, Snyder and Fremont. A heavy rain fell at Jackson, Nebraska this (Thursday) evening and washed out some of the Northwestern tracks; the rivers in that part of the state are overflowing. Miss Evelyn Richardson returned to her work in Omaha, Wednesday, following a few days' visit with her parents, Mr. and Mrs. H. Richardson at Phoenix, Nebraska. Mrs. Frank Biglin today submitted to an operation at the Mayo hospital in Rochester, Minnesota. She is apparently recovering nicely from the effects of the operation. The state convention of the Izaak Walton League which will be held in O'Neill this year has been set for September, according to reports appearing in the daily press of today. A letter from Rex Brown, who submitted to an operation for appendicitis at St. Catherine's Hospital in Omaha last week, announces the fact that he is getting along nicely. Mrs. Phil Ziemer went to Tilden last Friday for a visit with her mother, Mrs. E. J. Rockerfellow and with her daughter, Mrs. Roy Catron who resides seven miles southeast of Tilden. Oak View Park is advertising a Bohemian Picnic for Sunday, June 22nd. Orchard and Neligh will play ball. Bohemian dance at night. A big time is in sight for everyone who attends. Arrangements are being made to hold a celebration on the 4th of July at Redbird. A ball game and other sports and a big picnic dinner are features of the program. Everything will be free. A calf valued at about twenty dollars was stolen from the Mell Peterson pasture, thirteen miles north of O'Neill near Highway No. 8, last Tuesday night. No trace of the calf has been found. Miss Mildred Malone returned home last Saturday from Lincoln where she had been attending a business meeting of the state organization of the Izaak Walton League, of which she is secretary.

Lyric Theatre ATKINSON

PROGRAM
Now Showing—Ends Tomorrow
Matinee Every Sunday at 2:30
Friday and Saturday, June 13-14
WOOT GIBSON and his 50 wild ridin' cowboys in
"THE LONG, LONG TRAIL"
A western romance with songs, action and thrills that will please the whole family.
Wed., June 18—Bargain Night
Marion Davies in
"NOT SO DUMB"
Based on the stage hit, "Dulcy." A comedy hit that the whole family will enjoy. Prices 10 and 25c.
Thursday, Fri., Sat., June 19-20-21
"IN OLD ARIZONA"
This is a fine western picture. Warner Baxter as the "Cisco Kid." A talking picture which records actual sounds in the surroundings of nature.



is happy news
with
JANET GAYNOR
CHARLES FARRELL
singing in their lovingly
adorable way through
this Movietone Musical
song romance
directed by
DAVID BUTLER
presented by William Fox

Lyric Theatre, Atkinson
Sunday, Mon., Tues.,
June 15-16-17



WATCH THIS COLUMN

The Camp Fire girls of the Methodist church went to Long Pine this morning for a few days' outing in "Hidden Paradise," the amusement park. They were accompanied by Rev. Fortune and several ladies.

Miss Fern and Bert Hubbard came home from Lincoln last Sunday for a visit with home folks. Miss Fern returned to the University the first of the week; she expects to receive her Master Degree August first.

W. H. Allinger arrived home Monday night from a couple of week's visit with his parents in Tulsa, Oklahoma. Mrs. Allinger stopped in Lincoln and will accompany her mother and sister on a trip to California.

Sneak thieves broke into the Texaco storage tanks near the railroad tracks last Saturday night and stole about 100 gallons of gasoline. Sheriff Duffy has been working on several clues but has not yet located the gas.

Mr. and Mrs. R. L. Arbuthnot, daughters Miss Roberta and Miss Marian, and Mrs. D. Stannard drove to Lincoln last Monday where Miss Roberta will take a special course in Kindergarten work during the summer.

SUNDAY SERVICES AT THE PRESBYTERIAN CHURCH

10:00 a. m., Sunday School, Mr. Yantzi, Superintendent.
11:00 a. m., Morning Worship, subject, "Spiritual Vision."
8:00 p. m., Evening Service, subject, "Our Responsibility."
We expect to have especially prepared music for these services. Mr. H. D. Johnson will preach. A cordial invitation is extended to all.
H. D. Johnson, Minister

A NEW IDEA IN BOY SCOUT CAMPS; COST ONLY \$1 A DAY

New Camp This Year is Located at
Spencer Dam. Beginning June 16
for North Central District

For some time the Camping committee of our Area Council of the Boy Scouts of America has been particularly concerned with the fact that scouts of necessity must travel hundreds of miles to attend either of our two permanent camps and from this desire to make camping more accessible to the Scouts of our Council, has developed the District Camp idea. The plan of the camp is simple—it merely contemplates a complete scout camp which will make use of a most suitable and accessible camp site, thus giving real scout camping to all of our area without requiring the boy to travel more than 100 miles from home.

The District Camp will be as completely equipped as any permanent camp in our council. Starting with a 4-ton semi-trailer covered wagon in which will be transported all of the equipment down to the last detail which makes for safety, health and sanitation, as well as a real worthwhile camp vacation, the camp will be completely equipped. The tentage consist of army squad tents accommodating 8 scouts each, with folding canvas cots; a huge mess tent complete with tables and table ware, a cook tent, supervised by a competent chef, and containing complete hotel cooking equipment; 2 scout leaders; tents for the scoutmasters and other leaders who can spend all or part of their vacation at camp; a hospital and headquarters tent, a completely equipped set of tools, such as rakes, shovels, brooms, etc., also a full line of athletic equipment such as balls, mats, volley balls, etc. A word to Parents: Be sure to visit the camp and see how complete it is.

The District Camp will be under the personal direction of the Area Scout Executive, John D. Wright, a man of many years experience in camp management and leadership. Mr. Wright will personally supervise each of the camps during the coming summer.

Area Field Scout Executive, Harry C. Hurd, will serve as the Camp Director of this district camp. Mr. Hurd has had many years of camping experience and in addition is a graduate of the National Training School for Scout Executives and a National Camp Director's Training School, where he is qualified for his commission as a registered Camp Director.

Swimming and boating in our District Camp will be under the supervision of Special Deputy Commissioner McGrew Harris, a Senior Red Cross Life Saving Examiner and member of the Nebraska University Swimming Team, an Eagle Scout, and Assistant Scoutmaster of one of the outstanding troops in our area. He is particularly fitted for this responsible position and parents can rest assured that their boys are safe in his charge.

Each scout attending our district camp will be required to be personally examined by his family physician and to present a certificate from him upon his arrival at camp. Forms will be furnished each scout in advance of the camp for this purpose. Upon arriving at camp each scout will again be given an examination to determine his fitness to carry on the strenuous activities of camp life and will be weighed and measured.

In addition to the above necessary precaution, a physician will visit the camp daily to inspect sanitation and health conditions. Accidents and sickness in camp are very rare occurrences and every precaution will be taken to safeguard the health of the scouts and every safety precaution will be taken. Swimming will be only at stated hours and under the supervision of the water front director.

The commissary, mess hall and kitchen will be under the supervision of a competent chef. The menus will be prepared by an expert dietitian with a view toward a scientifically balanced ration. This assures scouts in attendance at the district camp food, wholesome and well prepared and, above all, a properly balanced diet.

As in our permanent camps, the program will be one of adventure, thrills and clean, wholesome activities. The time of the boys will be programmed from reveille in the morning until taps at night, and every opportunity will be given him to indulge in his particular hobbies. In addition to the regular staff, volunteer leaders will be in attendance who will assist with the advancement in conducting the program.

The North Central District Camp will be the Scout camp for Atkinson, Bloomfield, Creighton, O'Neill, Plainview, Newport, Verdigris, Wausa, Spencer Ewing, Brunswick, Monowi, Niobrara, Crofton, Page, Bassett,

Santee, Lynch, Bristow, Butte, Stuart and Osmond. It will be located on a beautiful lake formed by the hydroelectric power dam six miles south of Spencer, on highway No. 8. The lake formed by the dam on the Niobrara river is a beautiful body of water, two and one-half miles long and over a mile in width. The camp will be located in a beautiful grove at the foot of some overhanging cliffs. Swimming will be under ideal conditions, with a fine, sandy beach. There will also be plenty of boating and fishing. A beautiful spring bubbles out close to the camp site, assuring an excellent supply of fine spring water. Ten boats will be furnished free by Spencer.

The North Central District Camp will open Monday morning, June 16, and will close Wednesday afternoon, June 25. Scouts who desire may come to camp Sunday afternoon, June 15, but all should be in camp by 9 o'clock Monday morning. Where eight boys come from one troop, the leader will go free.

In registering for the camp it is desirable that troops register in a body. However, scouts may register individually if they desire. Registrations should be sent together with the \$1.00 advance fee, to Mr. Ed George, clothier, Creighton, who is the district camping chairman. The capacity of the camp is limited to 100 scouts and reservations will be taken on a first come served basis.

Camp fees will be \$10 for the 10-day period. \$1 should be sent in advance as a registration fee and \$9.00 paid on or before arrival at camp. You may register for 10 days for \$10.00 and get the scout leader's course.

Each scout should bring his bedding, clothing, toilet articles and a plate, bowl, cup, knife, fork and spoon. A complete list of suggested articles will be sent to each registrant before coming to camp.

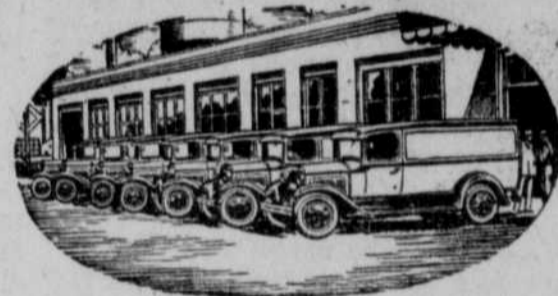
The scout uniform will be the official uniform of the camp. However, while the uniform is desirable, any scout who does not possess one, will be just as welcome in camp as the boy who does.

R. F. Farley, Dist. Chairman

WHEN YOU PAY CASH-- PAY A CASH PRICE!

MATCHES, 5c Box	3c
SANDWICH SPREAD, Pint Jar	25c
RAISIN BREAD, 15c Loaf, each	10c
QUAKER OATMEAL, 5 pound package	25c
MUSTARD, French style, Full Quart	18c
COFFEE, 50c grade Steel Cut, pound	37c
COFFEE, 35c grade, Steel Cut, pound	25c
SYRUP, Blue Karo, 10-pound pail	59c
CANDY, 4 lb. box of pure Marshmallows	67c
JOHNSON'S FLOOR WAX, prepared, pound can	62c
CREAM OF WHEAT, large size package	23c
MALT, Hop Flavored, large can	30c
MADE TO YOUR ORDER	
\$29.75 Men's Suits	\$23.50
Other Men's Suits at \$20 and \$17.95	

John J. Melvin
Sells for Less
57 Steps



SERVING MANY BUSINESSES

Experience of large fleet owners reveals the unusual reliability and economy of the new Ford

A SIGNIFICANT TRIBUTE to the value of the new Ford is found in its increasing use by Federal, state and city governments and by large industrial companies which keep careful day-by-day cost records. In most instances, the Ford has been chosen only after exhaustive tests of every factor that contributes to good performance—speed, power, safety, comfort, low cost of operation and up-keep, reliability and long life.

Prominent among the companies using the Ford are the Associated Companies of the Bell System, Armour and Company, The Borden Company, Continental Baking Corporation, Firestone Tire and Rubber Company, General Electric Company, Goodyear Tire and Rubber Company, Kellogg Company, Knickerbocker Ice Company, Morton Salt Company, Pillsbury Flour Mills Company, The Procter and Gamble Company, and Swift & Company.

Each of these companies uses a large number of Ford cars and trucks. The Associated Companies of the Bell System use more than eight thousand.

Modern business moves at a fast pace and it needs the Ford. Daily, in countless ways and places, it helps to speed the production and delivery of the world's goods and extend the useful service of men and companies.

Constant, steady operation over many thousands of miles emphasizes the advantages of the sound design of the Ford car, its high quality of materials, and

unusual accuracy in manufacturing. Beneath its graceful lines and beautiful colors there is a high degree of mechanical excellence.

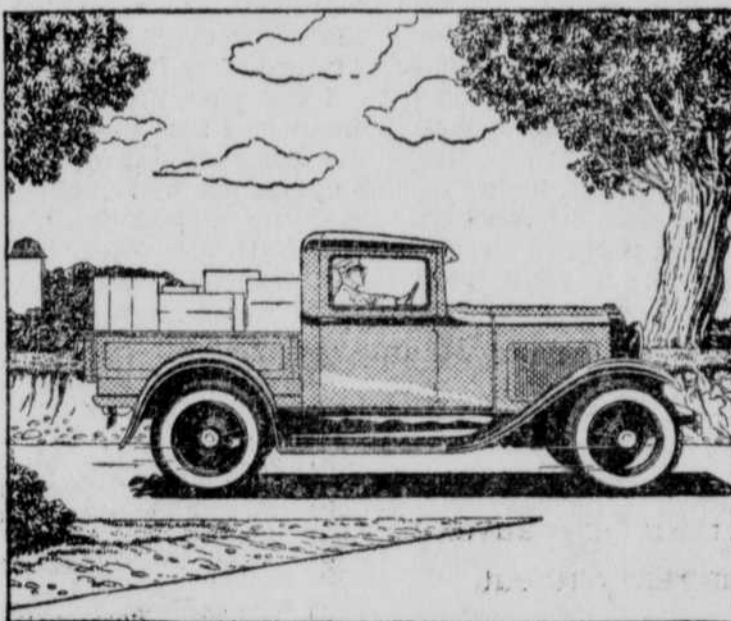
An example of the value built into the Ford is the use of more than twenty ball and roller bearings. They are hidden within the car and you may never see them. Yet they play an important part in satisfactory, economical performance. Their function is similar to the jewels of a fine watch.

Throughout the Ford chassis, a ball or roller bearing is used at every place where it is needed to reduce friction and wear and give smooth, reliable mechanical operation.

At many points, a ball or roller bearing is used at every place where it is needed to reduce friction and wear and give smooth, reliable mechanical operation.

Additional instances of the high quality built into the Ford are the extensive use of steel forgings, fully enclosed four-wheel brakes, Rustless Steel, four Houdaille double-acting hydraulic shock absorbers, aluminum pistons, chrome silicon alloy valves, torque-tube drive, three-quarter floating rear axle, and the Triplex shatter-proof glass windshield.

The Ford policy has always been to use the best possible material for each part and then, through large production, give it to the public at low cost.



NEW LOW FORD PRICES

Standard Coupe	\$495
Sport Coupe	\$525
De Luxe Coupe	\$545
Tourer Sedan	\$495
Three-window Fordor Sedan	\$600
De Luxe Sedan	\$640
Town Sedan	\$660
Cabriolet	\$625
Readster	\$435
Phaeton	\$440
Pick-up Closed Cab	\$455
Model A Chassis	\$345
Model AA Truck Chassis, 131 1/2-inch wheel base	\$510
Model AA Truck Chassis, 157-inch wheel base	\$555
Model AA Panel Delivery	\$780

All prices f. o. b. Detroit, plus freight and delivery. Bumpers and spare tire extra at low cost.

FORD MOTOR COMPANY



LOW EXCURSION FARES Every Saturday and Sunday until December 29, 1936

All points in Nebraska
and Kansas within radius
of 200 miles.



Tickets on sale for all trains
Saturday and Sunday.
Return to reach starting point
before midnight Monday.
For further information see
L. E. DOWNEY,
Ticket Agent