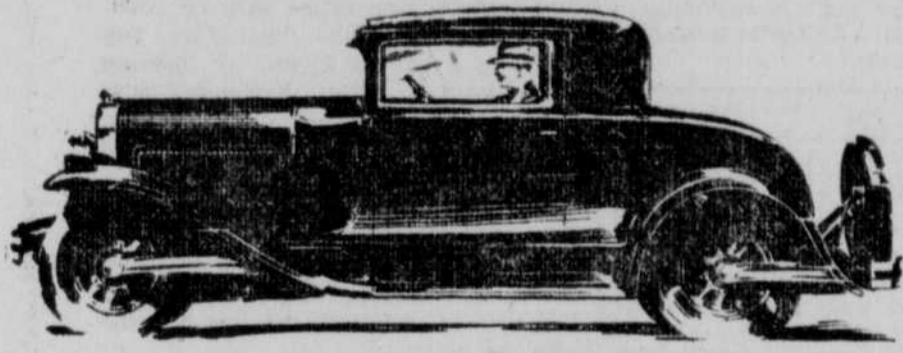


FORWARD-LOOKING PEOPLE WILL INVESTIGATE THIS CAR

It's a sign of progress to own this great new car



The Coupe, \$745. Body by Fisher

The New Pontiac Big Six offers the performance, style and comfort of a truly big car. Its quality is big car quality, yet its prices range as low as \$745. That's why it is enabling progressive Americans to step up in motor car ownership without leaving the low-priced field.

Prices \$745 to \$895, f.o.b. Pontiac, Mich., plus delivery charges. Bumpers and rear fender guards, regular equipment at slight extra cost. Check Oakland-Pontiac delivered prices—they include lowest handling charges. General Motors Time Payment Plan available at minimum rate.

Smith & Warner Motor Co.
Dealers, O'Neill, Nebr.
A. D. Under Norfolk

THE NEW
PONTIAC
PRODUCT OF GENERAL MOTORS **BIG 6** \$745

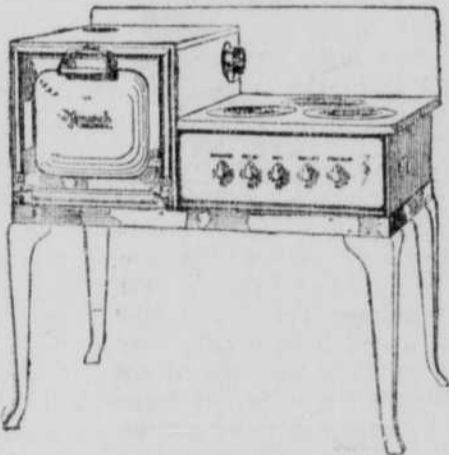
Dance

Opening Dance At
Riverside Park, Spencer, Neb.,
Sunday, March 31

Lawrence Welk's Orchestra of Yankton,
S. D., will furnish the music.

The Frontier \$2.00 per year.

Monarch
Malleable
Electric
Range



Watch For April
Demonstration
Date
Cooking School

Interstate
Power
Co.

Mdse. Dept.

HIGH SCHOOL NEWS.

EXPOSITION.

Ambrose Rohde, Editor
"Towards die many times before their deaths; The valiant never taste of death but once."

If a person is a coward and undergoes many dangers his fear is so great he suffers as much as if he were dying each time he undergoes each danger. If the person is brave he will face all dangers with a stout heart and only suffer the pain of death or anything like it when it actually comes. We often hear of the actions of persons condemned to die. They weep and implore their judge to spare them. They shake and their bodies seem to be wrenched by some monstrous force invisible to the human eye. Truly if their suffering is in proportion to their actions and carrying-on they die many times before their death.

"The evil that men do lives after them; The good is oft interred with their bones."

We remember those who have gone before by their faults and defects and the good they have done is often forgotten when they die. We remember Napoleon as an ambitious prince, striving ever to gain power and conquer new peoples. He was an unscrupulous man. He divorced the beautiful Josephine. He was uncultured, and sacrificed his friends and relatives if only his own ends might be furthered. When someone mentions Napoleon all these things come to the mind. Do we forget, though, the good he did? How he replaced the Directory of France by a stable, strongly-centralized government? How he built wide streets and magnificent boulevards, durable highways and majestic bridges and arches? And how he established a school system in France? If we consider Napoleon, we find the good balances the bad, yet we remember the man by the latter. As with Napoleon so with Caesar. He was a conquerer and was ambitious but was he not also kind and generous and did not he snatch the Republic from ruin and corruption? So it is with all men. In our minds an ounce of bad outweighs a hundred ounces

Cash Does It!

NEW PREMIUMS! A set of Pequot pillow cases and sheet with colored four inch border, hemstitched, threads hand drawn, very large sizes, each set packed in a gift box. Pequot sheets and pillow cases are nationally advertised and the high quality is known to almost every housewife. They are very beautiful with assorted colors.

Save your sale slips until you have accumulated \$8.00 worth, then purchase a set of these beautiful high quality Pequot cases and sheets for only \$3.49. The set is priced in many stores as high as \$6.00 or more.

- Bananas Ripe Yellow Fruit, Pound 06c
- Sugar. Fine Cane Granulated, 10 Pounds 59c
- Hostess Cake, each 15c
- Bread—Two Dime Loaves for 14c
- Coffee—Red, White and Blue, Pound 37c
- Johnson's Prepared Floor Wax 64c
- Malt—Pabst's Special, Large Can 47c
- Garden Seeds at a Special Price.

John J. Melvin

Sells for Less
57 Steps

of good. People watch us for our defects. When they find one they tell the world but forget all about our good points. So it is,—the evil men do lives after them while the good is oft interred with their bones."

PRACTICE TEACHING.

The Senior Normal Training girls have been experiencing the joys of actual teaching this week. Each girl was sent into a rural school for observation and practice teaching.

The schedule for the week was:
Monday—Observe the work of the regular teacher.

Tuesday—Continue observation and assist the regular teacher with seat work, etc.

Wednesday—Assist regular teacher and make plans.

Thursday—Teach all classes under supervision of regular teacher.

Friday—Complete control of the school; regular teacher may be absent. The girls were all placed in schools of this county:

- Daisy Calhoun—District No. 165, Miss Dorothy Lee, teacher.
- Helen Cleary, District No. 145, Miss Cecelia Bruder, teacher.
- Lona Cronwell, District No. 90, Miss Evelyn D. Pruss, teacher.
- Maude Fuller, District No. 224, Miss Elvaetta Bellinger, teacher.
- Marjory Grutsch, District No. 102, Miss Bernice Ernst, teacher.
- Anita Knapp, District No. 37, Miss Kathryn McCarthy, teacher.
- Amolia Merrell, District No. 8, Miss Rebecca Robertson, teacher.
- Neva Oberle, District No. 5, Miss Margaret Leach, teacher.
- Merle Omart, Emmet, Miss Emma Anspach, teacher.
- Mae Peter, District No. 171, Miss Irene Peter, teacher.
- Eva Spengler, District No. 64, Miss Anastasia Carney, teacher.
- Velda Saunders, District No. 62, Miss Ruby Knapp, teacher.

DISTRICT NO. 3 COMMERCIAL CONTEST

What was it all about? Well, 186 entries from twenty one towns in Nebraska assembled at Norfolk last Saturday to compete in Shorthand, Typewriting, Bookkeeping and Spelling. O'Neill High School placed third among schools; Norfolk and Wayne accumulating more points. Alice Page and Helen Toy placed second and third respectively in Spelling; Nellie Toy got third place in Novice Shorthand; Beryl Winchell took fourth in Bookkeeping, and Loretta Saunto placed fifth in Champion Shorthand.

We want to thank all the patrons of the school who so kindly offered their cars to take the students to Norfolk and especially Messrs. Oppen, Haffner and Charles Hancock who made our trip possible.

And maybe it isn't altogether out of place here to mention the enthusiasm and desire of the students of the Commercial department. We like to feel that they are rather in a class by themselves in that they exhibit a little initiative. They possess an attitude of business. They seem to have a conscience. They don't have to be policed.

JUNIOR CLASS PLAY.

By Anita Liddy.
The Junior Class is working upon the play "The Path Across The Hill." The cast is made up of the following:
Samuel Crawford—Grandpa
Harold Sexsmith
Robert Post—The Visitor
Julian Rummel
Walter Conrad—Ruth's Brother
Bruce Rummel
Dr. Jimmie Reed—With Ambition
Edwin Thompson
Salamander Alexander John Henry Jones—Zuzu's Choice
Levi Fuller
Mrs. Davis—Grandma
Grace Hancock
Ruth Conrad—Nicknamed "Bobbie"
Grace Welch
Flo Gray—Ruth's Cousin
Violet Rosler
Lutie—A Neighbor
Gurna Oppen

Very Latest In Feminine Negligees Shown In "Dream of Love."

(Fashion Feature)

Laces, satins, velvets trimmed with ostrich feathers, marabou and embroideries are seen in the newest femi-

nine negligees.

In "Dream of Love," a Metro-Goldwyn-Mayer picture coming March 31 to the Royal Theatre, some of the very latest designs and materials are seen. The colors are equally beautiful but can only be photographed black, gray and white.

Joan Crawford wears an elaborate negligee in a very dramatic scene. Pink satin is designed in a long clinging line with graceful sleeves trimmed with white marabou. Marabou also frames the face and outlines the long train. High-heeled pink satin mules are worn with this costume.

Alice blue chiffon is used to fashion the feminine negligee worn by Carmel Myers. Under this softly clinging gown is worn a knife-pleated slip.

Appearing in the picture as a duchess, Aileen Pringle wears some lovely gowns. In her boudoir she is seen in an orchid souffle negligee carrying out the regal dignity she portrays. Orchid satin pumps complete her costume.

In another sequence she wears a green and gold negligee which is made with long, formal lines. Gold pumps are seen with this outfit.

"Dream of Love" was directed by Fred Niblo and the story is an adaptation by Dorothy Farnum from the famous French play, "Adrienne Lecouvreur." Others in the cast include Miss Crawford, Miss Pringle and Miss Myers are Nils Asther, Warner Oland, Harry Reinhard, Harry Myers, Alphonse Martell and Fletcher Norton.

NOTICE!

There is an ordinance prohibiting riding of bicycles on sidewalks, and as the practice is dangerous, it must be discontinued.

SCOTT HOUGH,
Chief of Police.

THE ROYAL THEATRE

Home of Good Pictures

Thursday-Friday, March 28-29 — BIG SPECIAL—John Gilbert and Renee Adoree and Ernest Torrence in

"THE COSSACKS"
He was a great fighter—but a great lover. Gilbert has never portrayed a romantic character to match this one for thrills!

Friday 10c Night.
Saturday, March 30th —

Richard Dix and Ruth Elder in "MORAN OF THE MARINES"
Love! Action! Fun! Dix makes love to the beautiful trans-Atlantic girl flyer, Ruth Elder.

Sunday-Monday, Mch. 31-April 1— BIG SPECIAL—Joan Crawford and Nils Asther in

"DREAM OF LOVE"
Here is a love story that will live forever!

Tuesday, April 2nd —
Hoot Gibson in "CLEARING THE TRAIL"
Plenty of action, hard riding and Hoot saves the day. 10c Night.

Wednesday, April 3rd —
Buzz Barton in "THE PINTO KID"

If you want speed, if you want thrills, if you want action of the kind they write about in red letters, don't fail to see this. Bring the family.

Thursday, April 4th —
Irene Rich and Warner Baxter in "CRAIG'S WIFE"

She was charming censorious woman who thought more of the ornaments on her mantle and the priceless rugs on the floor than she did of retaining her husband's love, but one day he was disillusioned, then he smashed— 10c Night.

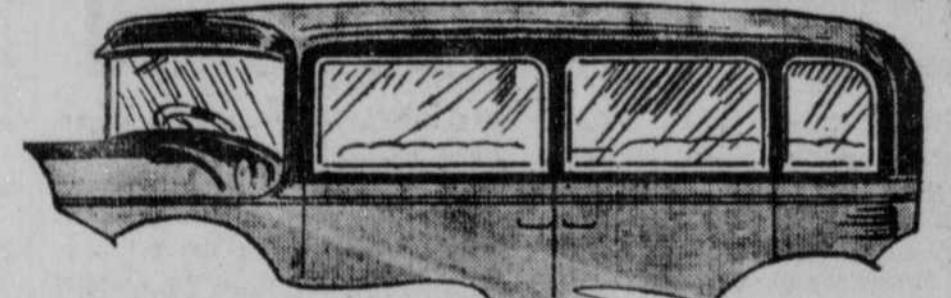
Friday, April 5th —
Mary Astor and Matt Moore in "DRY MARTIN"

A mellow old expatriated American dwells pleasantly in the French capital—until his daughter comes to visit him for the first time in ten years.

Saturday, April 6th —
J. Farrell MacDonald and Louise Fazenda in

"RILEY THE COP"
If you want thrills, laughs and to forget your troubles, see this. It's a scream.

GLASS—The Most Fragile Part of Your Car



Protect It With Thoma Glass Service Insurance

YOU wouldn't think of driving your car without being insured against fire, theft, liability, property damage—but what about glass, your most frequent cause of loss?

On that hazard, which costs motorists the staggering sum of more than \$60,000,000 a year, you have little or no protection. You must carry the risk yourself—unless you allow a Thoma Glass Service Policy to carry the risk for you.



Ask for This Interesting New Thoma Booklet—

Do you know that one motorist in three breaks glass each year? That the total breakage is more than 7,000,000 lights, and the cost to motorists more than \$60,000,000? That it is the most frequent cause of loss of all automobile risks? The Thoma booklet tells the whole interesting story. We have a copy for you.

You need the Thoma Policy. Costs Little; Gives Much. Ask Us About It.

L. G. Gillespie

Agent

INSURANCE

Any Kind That You May Want

15% to 25% Saved on Insurance Policy

Insure against Loss from
Fire
Lightning
Tornado
Hail

Every car owner should
Insure against
Collision
Public Liability and
Property Damage

Plate Glass insurance
in a strong company

Court Bonds
Contractors Bonds
Notary's Bonds written

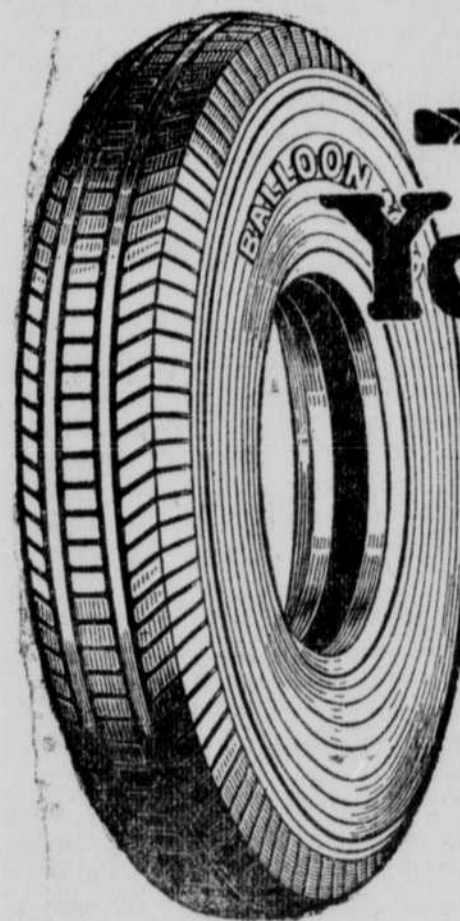
SEE

L. G. Gillespie Insurance Agency

O'Neill, Nebraska.

Our Slogan

"Service and Prompt Settlements"



You Are Insured

You are insured for ONE WHOLE YEAR against EVERY road hazard when we put one of our standard quality tires on your car.

And as to cost—it is a whole lot LESS than you have been paying. Our chain store buying power makes a big difference.

Standard Quality Balloons		Standard Quality Cords	
29x4.40	\$ 6.95	30x3 1/2 O. S.	\$ 5.95
30x5.25	11.65	32x4	10.95
33x6.00	14.65	32x4 1/2	15.40
30x3 1/2 Economy	\$3.95	29x4.40 Economy	\$4.95

National TIRE Stores

O'Neill Tire Station, O'Neill, Nebr.