

HIGH SCHOOL NEWS.
(Continued from page 7.)

colors, blue in distance but nearer they are brown, light brown, middle brown, and dark brown with green sides and lysante tops which makes them quite as if they were lighted by the sun; and in the afternoon in quiet weather they are almost lost in a heavy distance, which makes them enchanting. We have clear streams which come from the mountains and brown streams which come from the glaciers; great and diverse water falls which are one of the greatest beauties in Iceland. Next time I will send you pictures of some of them. In Iceland there are glaciers in here with coverings, both in winter and summer, and it is very difficult to journey over them because of their precipitousness and deep clefts, and sometimes because of the streams which are only bridged in the cultured parts of Iceland. They are brown heaths with green matts. There are also woods yet there are few of them. Before there were many; the country was almost covered with wood from the mountains to the sea; but the inhabitants burned them, now they have done much to cultivate them again. There are great and small ponds, and the largest of them is Hingvallavatu in the southern part of Iceland. I will also send you a picture of it. Before people in Iceland especially used horses to draw their carriages, carry their loads and for riding, and to they were the most useful animals because then the ways were very bad. Later came automobiles. At first no one dared to travel with them, but soon the bravest made up their mind to run the risk, and now there are a great many automobiles in the whole country; that is to say in the inhabited part of it, Iceland is not inhabited all over. In the middle of it there are great inhabitable parts. We also have motor cycles and bicycles. I and my brother have bicycles and we use them now because here is no snow and the streets are dry. In last summer we got a little aeroplane from Deutschland and was especially used by tourists (not foreign). Next summer we are going to have one, and I am very glad for it, and hope to travel with it next summer. In summer there come many tourists to see our small country from U.S. A., England, Deutschland, and many other countries, but they remain here so short time that they only see very little of Iceland. They buy very much Icelandic things; dolls in native dress, and many others.

You asked if we used sleighs and dogs here in winter, but we don't use them at all because there is not enough snow here, and we always can use automobiles, at least in the southern part of Iceland; in the northern part it is colder and they perhaps sometimes use sleighs and horses, but never dogs. Winter is not cold here and summer not very warm. Yet last summer they say was cloudless for weeks, and we had somethimes 28 to 30 degrees. Now there has been quiet weather here for a very long time, and we are very surprised when we read in newspapers that there is a great deal of snow and cold in the southern part of Europe, and the many people die with cold, also in America.

The pond in Reykjavik which I have described before is not iced so we are not able to skate. Our sports in winter are skating, sleigh riding, we run in skis, swimming both in summer and winter in a swimming bath which is a little outside of Reykjavik but is only a little refreshing walk. In summer we dance, and usually much more in winter. ride in the country on our Icelandic ponies, we have coasting, tennis, golf, foot-ball, base-ball and we sometimes play picket, and ascent mountains. We travel in the country with automobiles, on foot, and with tents on our bicycles, and when there are many aeroplanes in the little dear Iceland I think they will be much used to travel with. My father is a teacher in my school. He teaches Icelandic Grammar in allclasses. The address of one Icelandic Missionary whose name is Sigurbjorn A. Gislason.

Asi in Reykjavik.
I thank you very much for your letter and the tracts.
Yours sincerely,
Katrin Sinar.

P. S.—I don't have any good picture of myself now but in my next letter I am hoping to be able to send you one, and in your next I would like one of you.
Katrin Sinar.

THE CHEVROLET SIXES SHOW LARGE PRODUCTION

Assurance that Chevrolet's position as "world's largest builder of automobiles" will be sustained again this year, is contained in official production figures which give 106,914 passenger car and truck units as output for the first 45 days production on the new sizes. This figure not only eclipses all previous records of manufacturers of six cylinder cars, but actually exceeds the entire year's output of any other manufacturer during the first year.

The figures as revealed by W. S. Knudsen, president of the company, date from December 15th to February 1st. January production was 86,178, meaning that 20,736 units were produced the last two weeks of December. A highlight of this remarkable 45 day production record was the manufacture, January 31, of 6,729 cars. This was peak for any day during the period and can be regarded as an indication that February would find all Chevrolet's mammoth productive facilities geared to meet maximum quotas. Chevrolet's peak day as a producer of sixes does not compare unfavorably with the company's all time record for a single day, which occurred May 28, 1928, when 7,075 four cylinder units were produced.

Further comparison with last year shows that production this January is only 5,406 units less than January 1928, despite numerous handicaps incident to a changeover as high as Chevrolet effected successfully last

fall. And it is 12,502 in excess of January, 1927, when 73,676 four cylinder units were turned out. Last fall's turnover involved 20 widely scattered plants, and called for an entirely new set of machine tools, patterns and dies. Replacement began while the company still was engaged intensively in volume production of last year's four cylinder car—an achievement, which for speed and efficiency, has never been surpassed in the industry.

Some interesting statistics relative to the turnover were recalled last week by Mr. Knudsen, who declared that the Flint Motor plant manufactured 12,000 motors, an average of better than 1,000 per working day, between November 15th, when the six cylinder announcement was made, and December 1. During December, he related, 60,000 motors were produced, an average of better than 2,000 a day.

All of which would seem to indicate that Chevrolet was well fortified when it made and kept its promise of deliveries January 1, six weeks from the time the new car was announced. Production this year calls tentatively for 1,250,000 units. Several important expansions, completed during the past 12 months, have increased the company's annual capacity by 250,000. Last year Chevrolet outlined a production program calling for 1,000,000 cars, and actually surpasser this quota by 200,000 in a little more than 10 months time.

SUPERVISOR'S PROCEEDINGS.

At 12 o'clock noon committee arose and on motion board adjourned until 1 o'clock p. m.

JOHN SULLIVAN, Chairman.
E. F. PORTER, Clerk.

O'Neill, Feb. 1, 1929, 1 p. m.
Holt County Board met pursuant to adjournment. All members present but Stein.

Board called to order by the Chairman and went into committee of the whole and continued checking county officers.

At 5 o'clock p. m., committee arose and on motion board adjourned until February 2, 1929, at 9 o'clock a. m.

JOHN SULLIVAN, Chairman.
E. F. PORTER, Clerk.

O'Neill, Feb. 2, 1929, 9 a. m.
Holt County Board met pursuant to adjournment. All members present.

Board called to order by the Chairman. Minutes for Feb. 1, 1929, read and approved.

On motion the following resolution was unanimously adopted:

RESOLUTION.

WHEREAS, It is our understanding that legislation will be proposed at the present session of the legislature providing for a Commission or Board of officers to act without pay to which Board the State Engineer might refer questions regarding road building and.

WHEREAS, We believe that it is for the best interest of all concerned that the authority now delegated to the State Engineer remain with him instead of in such proposed Commission.

RESOLVED, That it is the sense of this Board that there would be no change in the law which would result in any transfer of authority now in the State Engineer to any Board or Commission and that a copy of this resolution be mailed to the Representative and Senator of the County.

At 9:30 a. m. on motion the board decided to go as a committee of the whole to inspect some roads and auto gates in Cleveland township and adjourned until February 4, 1929, at 10 o'clock a. m.

JOHN SULLIVAN, Chairman.
E. F. PORTER, Clerk.

O'Neill, Feb. 4, 1929, 10 a. m.
Holt County Board met pursuant to adjournment. All members present.

Board called to order by the Chairman. Minutes for Feb. 2, 1929, read and approved.

RESOLUTION.

Mr. Chairman: I move you that this board request Hon. Ross Amps-poker and Hon. C. E. Havens to use their best efforts to have Highway No. 54 extended from Atkinson north to Butte, Nebraska, and made a part of the State Highway system.

JOHN SULLIVAN.
L. C. MCKIM.
HUGH L. JAMES.
L. E. SKIDMORE.
J. C. STEIN.
JOHN STEINHAUSER.
E. GIBSON.

Upon the above resolution being put to vote by the Chairman it was declared carried.

Board spent the rest of the forenoon in selecting a jury for the March term of court.

At 12 o'clock noon on motion board adjourned until 1 p. m.

JOHN SULLIVAN, Chairman.
E. F. PORTER, Clerk.

O'Neill, Feb. 4, 1929, 1 p. m.
Holt County Board met pursuant to adjournment. All members present.

Board called to order by the Chairman.

On motion Dr. W. J. Douglas was appointed as a member of the soldiers relief commission for a term of three years.

Soldier's Relief Commission Report.

We, your committee on Soldier's Relief fund submit the following report:

Bal. on hand Jan. 25, 1928 \$198.00
Checks returned 180.00

Balance on hand Feb. 4, 1929 18.00

W. J. Douglas, M. D.
Balance by A. D. Havens
Jan. 25, 1928 \$7.47
Deposited by Havens 100.00

Checked by Havens 107.47
7.80

Balance turned over to Douglas 99.67

Checks returned by Douglas 24.46

Balance on hand Feb. 4, 1929 75.23

L. S. Butler

Balance on hand Jan. 25, 1928 \$105.00
Checks returned 20.00

Balance on hand Feb. 4, 1929 \$85.00

On motion the report of the committee was approved and committee discharged.

On motion the following names were approved from which to select the Jurors for the March term of Court:

District No. 1
Coleman—Henry Storjoh, Phoenix.
Emmet—Harry Werner, Emmet.
Emmet—Eugene Luben, Emmet.
Rock Falls—Floyd Johnson, O'Neill.
Saratoga—Roy Nelson, Phoenix.
Pleasant View—William Siebert, Atkinson.

District No. 2
Shields—Edwin Heeb, Atkinson.
Shields—W. A. Conway, O'Neill.
Paddock—C. Harley Ross, Red Bird.
Paddock—Geo. Tomlinson, Opportunity
Steel Creek—S. B. Thomas, Red Bird.
Willowdale—Leslie Wertz, Star.
Iowa—H. J. Stevens, Page.

District No. 3
O'Neill—Geo. Shoemaker, O'Neill.
O'Neill—Ed. Jones, O'Neill.
O'Neill—R. M. Millard, O'Neill.
O'Neill—Richard Minton, O'Neill.
O'Neill—Elmer Hagensick, O'Neill.
Grattan—J. K. Ernst, O'Neill.
Grattan—Joe McNichols, O'Neill.
Grattan—Jerry Hanly, O'Neill.
Grattan—Frank Barrett, O'Neill.
Grattan—John Vitt, O'Neill.
Grattan—James J. Kelly, O'Neill.

District No. 4
Ewing—Bert Lawrence, Ewing.
Ewing—Mervin Butler, Ewing.
Golden—H. E. Pierson, Ewing.
Deloit—John Daniels, Ewing.
Verdigris—W. A. Nichol, Parge.
Verdigris—Lyle T. Roberge, Page.
Verdigris—J. S. Stevens, Page.

District No. 5
Chambers—Wm. Russ, Chambers.
Chambers—Ben Hubbard, Chambers.
Chambers—John Adams, Chambers.
Conley—Wm. Shipman, Chambers.
McClure—Fred Ermer, O'Neill.
Shamrock—Wm. Jutte, O'Neill.
Inman—H. O. Stevens, Inman.
Wyoming—Tom Doolittle, Amelia.
Inman—Geo. A. Coventry, Inman.

District No. 6
Stuart—George Weber, Stuart.
Stuart—Bert Shearer, Stuart.
Stuart—Jim Carrigan, Stuart.
Stuart—Anton Wallinger, Stuart.
Green Valley—Anton Tasler Jr., Stuart.

District No. 7
Sheridan—Fred Mack, Atkinson.
Sheridan—James Kubart, Atkinson.
Atkinson—Chas. Coninger, Atkinson.
Atkinson—John Henning, Atkinson.
Atkinson—Lew E. Gettner, Atkinson.
Atkinson—Phillip Keating, Atkinson.
Atkinson—Mark Walbrath, Atkinson.
Atkinson—Arthur Humpal, Atkinson.
Atkinson—A. J. Frost, Atkinson.
Sand Creek—John Timmerman, Stuart.

At 5 o'clock p. m. on motion board adjourned until Feb. 5, 1929, at 9 o'clock a. m.

JOHN SULLIVAN, Chairman.
E. F. PORTER, Clerk.

O'Neill, Feb. 5, 1929, 9 a. m.
Holt County Board met pursuant to adjournment. All members present.

Board called to order by the Chairman. Minutes for Feb. 4, 1929, read and approved.

Board then went into committee of the whole and continued checking county officers.

At 12 o'clock noon committee arose and on motion board adjourned until 1 o'clock p. m.

JOHN SULLIVAN, Chairman.
E. F. PORTER, Clerk.

O'Neill, Feb. 5, 1929, 1 p. m.
Holt County Board met pursuant to adjournment. All members present.

Board called to order by the Chairman and went into committee of the whole and continued checking county officers.

At 5 o'clock p. m. committee arose and on motion board adjourned until Feb. 6, 1929, at 9 o'clock a. m.

JOHN SULLIVAN, Chairman.
E. F. PORTER, Clerk.

O'Neill, Feb. 6, 1929, 9 a. m.
Holt County Board met pursuant to adjournment. All members present.

Board called to order by the Chairman. Minutes for February 5, 1929, read and approved.

Board then went into committee of the whole and continued checking county officers.

At 12 o'clock noon committee arose and on motion board adjourned until 1 o'clock p. m.

JOHN SULLIVAN, Chairman.
E. F. PORTER, Clerk.

O'Neill, Feb. 6, 1929, 1 p. m.
Holt County Board met pursuant to adjournment. All members present.

Board called to order by the Chairman and went into committee of the whole and continued checking county officers.

At 5 o'clock p. m. committee arose and on motion board adjourned until February 7, 1929, at 9 o'clock a. m.

JOHN SULLIVAN, Chairman.
E. F. PORTER, Clerk.

O'Neill, Feb. 7, 1929, 9 a. m.
Holt County Board met pursuant to adjournment. All members present.

Board called to order by the Chairman and went into committee of the whole and continued checking county officers.

At 12 o'clock noon committee arose and on motion board adjourned until 1 o'clock p. m.

JOHN SULLIVAN, Chairman.
E. F. PORTER, Clerk.

O'Neill, Feb. 7, 1929, 1 p. m.
Holt County Board met pursuant to adjournment. All members present.

Board called to order by the Chairman and went into committee of the whole and continued checking county officers.

At 5 o'clock p. m. committee arose and on motion board adjourned until February 8, 1929, at 9 o'clock a. m.

JOHN SULLIVAN, Chairman.
E. F. PORTER, Clerk.

O'Neill, Feb. 8, 1929, 9 a. m.
Holt County Board met pursuant to



K.C. BAKING POWDER
Same Price for over 38 Years
25 ounces for 25 cents
Guaranteed Pure and Healthful
Millions of pounds used by the Government

adjournment. All members present.

Board called to order by the Chairman. Minutes for February 7, 1929, read and approved. Board then went into committee of the whole and continued checking county officers.

At 12 o'clock noon committee arose and on motion board adjourned until 1 o'clock p. m.

JOHN SULLIVAN, Chairman.
E. F. PORTER, Clerk.

O'Neill, Feb. 8, 1929, 1 p. m.
Holt County Board met pursuant to adjournment. All members present.

Board called to order by the Chairman.

Resolution.

WHEREAS, the several banks of the county desiring to be designated as a depository of public moneys in the hands of, held and collected by the county treasurer of Holt County, want to pledge securities, of the character designated by law, to secure such deposit, and

WHEREAS, the county has no funds sufficiently strong to safely hold such large amount of securities,

NOW, THEREFORE, I move you, that, in accord with Section 5 of Chapter 34 of the session laws of 1927, the following banks be approved as depositories of such securities, to-wit:

First National Bank of Omaha.
Omaha National Bank.
The Chase National Bank of the City of New York.

The First National Bank, O'Neill, Nebraska.
Federal Reserve Bank of Kansas City.

Stockyards National Bank, South Omaha.

and that the county clerk accept of such depositories a trust receipt, in lieu of such securities evidenced thereby in the form of and executed in the manner approved by the County Treasurer of Holt County, Nebraska.

HUGH L. JAMES.
L. E. SKIDMORE.

Upon the above resolution being put to vote by the Chairman it was declared carried.

Resolution.

WHEREAS, The First National Bank, O'Neill, Nebraska; The First National Bank, Stuart, Nebraska; Farmers State Bank, Ewing, Nebraska; The Citizens Bank of Stuart, Nebraska; Inman State Bank, Inman, Nebraska; Chambers State Bank, Chambers, Nebraska; Security State Bank, Atkinson, Nebraska; Nebraska State Bank, O'Neill, Nebraska; Emmet State Bank, Emmet, Nebraska; have made application for the privilege of keeping county moneys, and

WHEREAS, all of said banks have deposited certain bonds, of the character and deposited in the manner as by law provided, for the security of any and all funds to be deposited in any such bank by the county treasurer, and

WHEREAS, all of said banks have agreed to all provisions of law with respect to the deposit of such moneys

NOW, THEREFORE, I move you that the following banks, to-wit: The First National Bank, O'Neill, Nebraska; The First National Bank, Atkinson, Nebraska; The O'Neill National Bank, O'Neill, Nebraska; The First National Bank, Stuart, Nebraska; Farmers State Bank, Ewing, Nebraska; The Citizens Bank of Stuart, Nebraska; Inman State Bank, Inman, Nebraska; Chambers State Bank, Chambers, Nebraska; Security State Bank, Atkinson, Nebraska; Nebraska State Bank, O'Neill, Nebraska; Emmet State Bank, Emmet, Nebraska, be designated, selected and named as depositories of the public monies in the hands of, held and collected by the county treasurer of Holt County, Nebraska.

That a copy of this resolution be transmitted to the Clerk and Treasurer.

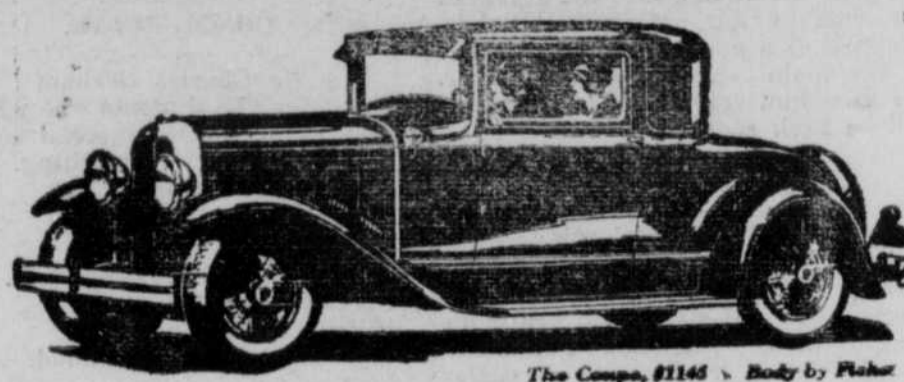
HUGH L. JAMES.
L. E. SKIDMORE.

Upon the above resolution being put to vote by the Chairman it was declared carried.

Mr. Chairman: I move you that the bonds of the following banks as depositories for County funds to

The First National Bank, O'Neill, Nebraska; The First National Bank, Stuart, Nebraska; The Citizens Bank, Stuart, Nebraska; Chambers State Bank, Chambers, Nebraska; Nebraska State Bank, O'Neill, Nebraska; The O'Neill National Bank, O'Neill, Ne-

THE NEW OAKLAND ALL-AMERICAN SIX
PRODUCT OF GENERAL MOTORS



Investigation proves that it has no equal at its price

More for your money. More beauty, luxury and style. More balanced power, speed and acceleration. That's what you get in the New All-American Six... This greatest of all Oaklands is enjoying ever-increasing popularity. Simply because investigation proves that it has no equal in all that it offers at its price.

Prices \$1145 to \$1375, f. o. b. Pontiac, Mich., plus delivery charges. Spring covers and Looney Hydraulic Shock Absorbers included in list prices. Check Oakland delivered prices—they include lowest handling charges. General Motors Term Payment Plan available at minimum rate.

Smith & Warner Motor Co.
Dealers, O'Neill, Nebr.
A. D. Under Norfolk

Combination and Stock SALE

Saturday, March 16, 1929

We will hold our next Big Combination Sale at the farm, just south of Northwestern Depot, O'Neill, commencing at 1:00 p. m., on

40 Head of Cattle 40
Jack Quig will sell 20 Shorthorn heifers and steers, coming yearlings; one of the best Holstein cows in northwest Nebraska, bred to Double Standard Polled Shorthorn bull to calf about September 10th; registered Red Polled Shorthorn bull calf six months old and a good one; 10 pure bred Polled Shorthorn open heifers; 7 cows to calf soon. Also will be sold 4 Red Shorthorn milk cows giving milk and four young calves. All milk cows and heifers will be sold in single lots.

A Lot of Machinery
45 bushel Yellow Dent 90 day seed corn; 8 bushels Calico seed corn. This corn will germinate 94 to 96 per cent. 1,000 bushels of cane seed. A lot of furniture; kid bed; power washer; trip for hay fork; storm windows; 2 fifty-egg incubators; three 32-piece dinner sets of new dishes; chickens and lots of other things too numerous to mention.

This will be the biggest sale of the season and will start promptly at 1:00 p. m. in order to finish before dark. We will serve lunch and hot coffee all day. Sandwiches all kinds 5 cents; coffee 5 cents, cream and sugar free, also onions. Bring your own tin cup. Everything sold at buyers risk, immediately it is sold.

John L. Quig, Manager
COL. JAMES MOORE, Auct. O'NEILL NATL. BANK, Clerk.

The O'Neill National Bank

Capital, Surplus and Undivided Profits, \$125,000.00

This bank carries no indebtedness of officers or stockholders.

EVERY time you waste a dollar, you throw an encouraging bone to the Wolf of Poverty.

The O'Neill National Bank

Capital, Surplus and Undivided Profits, \$125,000.00

This bank carries no indebtedness of officers or stockholders.