

## The new Ford has a very simple and effective lubrication system



THE lubrication system for the engine of the new Ford is as simple in principle as water running down-hill.

A gear pump in the bottom of the oil pan raises the oil to the valve chamber reservoir. From here it flows on to the main crankshaft bearings and the front camshaft bearing. Overflow oil drops into the oil pan tray and runs into troughs through which the connecting rods pass.

As the ends of these rods strike the oil they scoop up a supply for the connecting rod bearing. At the same time they set up a fine spray that lubricates the pistons and other moving parts.

From the tray the oil runs into the bottom of the pan, and is again drawn up through a fine mesh screen and pumped to the valve chamber.

This system is so effective that the five-quart contents of the oil pan pass through the pump twice in every mile when you are traveling at only 30 miles an hour. Yet there is only one movable part—the oil pump.

As a matter of fact, the lubrication system for the new Ford is so simple in design and so carefully made that it requires practically no service attention.

There is just one thing for you to do, but it is a very important thing . . . watch the oil! Change the oil every 500 miles and be sure the indicator rod never registers below low (L).

If the oil level is allowed to fall below low, the supply becomes insufficient to oil all parts as they should be oiled.

To insure best performance it is also advisable to have the chassis of your car lubricated every 500 miles. This has been made easy in the new Ford through the use of the high pressure grease gun system.

Proper oiling and greasing mean so much to the life of your car that they should not be neglected or carelessly done.

See your Ford dealer regularly. He is especially well-fitted to lubricate the new Ford and he will do a good, thorough job at a fair price.

### FORD MOTOR COMPANY

#### PLEASANT VALLEY NEWS.

C. A. Grass autowed up to O'Neill Saturday on business.  
George Fink and wife visited at the Frank Snyder home Sunday.  
Mr. and Mrs. Orville Park spent the day Sunday with the Joe Wert family.  
Clyde Streeter and Claud Hamilton took in the blue rock shoot in Inman Sunday.  
Mr. and Mrs. L. K. Hough of

O'Neill, visited at the Cora Hamilton home Sunday.  
Mrs. R. H. Murray and daughter, Gertrude, visited Thursday at the Clyde Streeter home.  
Mrs. Joe Wert, Claude Jerdan and Ester Timm departed last Friday for their new home at York, Nebraska.  
Miss Elsie Hamilton, of Lincoln, had the misfortune to severely burn her hand with carbonic acid last Saturday.

## A Great Opportunity!

To Buy  
A Brand New Dodge  
Standard or Victory Six

At Greatly Reduced Prices

We must move, at once, our entire stock of Dodge Brothers Standard and Victory Six Passenger Cars.

Here is your opportunity to own a fast, new, smart, dependable Dodge Brothers car at a price never before offered. Every one of these cars comes in attractive colors, luxuriously appointed throughout and beautifully upholstered.

At their former prices these cars were extraordinary bargains—at the NEW prices there is nothing to compare with them for dollar-for-dollar value.

#### STANDARD SIX

	New Price	Saving
	f. o. b. Detroit	
DELUXE SEDAN	\$795	\$175
SEDAN	\$765	\$165
COUPE	\$725	\$150

#### VICTORY SIX

	New Price	Saving
	f. o. b. Detroit	
FOUR-PASSENGER COUPE	\$945	\$225
DELUXE SEDAN	\$945	\$200
SEDAN	\$895	\$200
COUPE	\$845	\$200

Convenient terms even at these low prices!

### F. H. SPANGENBERG, Inc.

117 SO. 3rd ST.

#### ASSOCIATED DEALERS

Bonnet Motor Co.	Madison	Anderson Motor Co.	Neligh
Jerome T. Brazda	Wisner	H. D. Link	Elgin
Gurney Benshoof	Winside	Jacminek & Jiracek	Verdigree
Prazak Auto Co.	Clarkson	E. C. Rector	Orchard
Thos. S. Mains	Stuart	E. A. Phillips	Clearwater
Newman Grove Auto Co.	Newman Grove		

Ralph Prill, Jay Tush and Wayne Henderson were down near Middle Branch Sunday looking after their horses.

Mr. and Mrs. Frank Snyder autowed over to Ewing Friday and visited with their son and daughter, Mr. and Mrs. George Fink.

Mrs. Munson Stewart entertained the N. O. K. club Thursday afternoon. A dainty lunch was served and every one had a good time. Mrs. Luna Smith, of Inman, was a guest of the club.

#### SUPERVISORS' PROCEEDINGS.

(Continued)  
original on file and of record in my said office.

IN WITNESS WHEREOF, I have hereunto subscribed my name and affixed the Seal of said Court, this 31st day of October, A. D. 1928.

IRA H. MOSS,  
Clerk of the District Court.

Upon the above motion being put to vote by the Chairman it was declared carried.

At 12 o'clock on motion board adjourned until 1 o'clock p. m.

JOHN SULLIVAN, Chairman.

E. F. PORTER, Clerk.

O'Neill, Oct. 31, 1928, 1 p. m.

Board met pursuant to adjournment. All members present. Board called to order by the Chairman.

Upon motion the above order was approved and clerk instructed to draw warrants in accordance therewith.

On motion claim of Barney Corri-gan of \$1400.00 for damages claimed

for removing trees and right of way was rejected.

The following claims were audited and approved and on motion allowed on the Road fund:

S. C. Cox	\$9.50
L. R. Tompkins	67.80
Standard Oil Co.	235.65
M. Roy	15.00
John Galligan	110.50
Elgie Irish	180.00
O'Neill Battery Station	12.24
M. H. Butler	17.50
Richard Minton	110.00
Frank and Ed Jungman	49.00
W. R. Callen	3.00
Joe Schaaf	13.58
Wm. Jutte	67.60
James Carman	6.00
Victor Marquarde	18.00
Laurence Pasha	8.50
Marion Davis	53.20
John Steinhauer	35.00
G. R. Wright	49.00
A. B. McKay	20.90
E. Gibson	48.00
Chas. Manning	16.00
Mellor Motor Co.	134.46
Frank Osborn	116.66
D. D. Hunt	38.50
Hugh L. James	14.70
J. C. Cork	86.60
Lee Calkins	121.25
D. H. Murphy	7.00
Pete Weber	74.00
Clarence Tasler	28.00
Henry Schaaf	2.40
Ray Hoffman	56.00
O'Neill Gas & Oil	32.98
John Waldron	12.00

(Continued on page 8)

#### HOLT COUNTY

#### AGRICULTURAL SOCIETY ANNUAL MEETING

The Stockholders of the Holt County Agricultural Society are hereby called to meet in the office of F. J. Dishner, on Friday afternoon, November 30, 1928, at 2:30 o'clock, for the purpose of electing officers for the ensuing year, to set dates for 1929 Fair, and for all business to come before the annual meeting.

F. J. Dishner, President.  
Peter W. Duffy, Secretary.

#### RANCHER, CARTOONIST, COLLEGIAN, NOW AN ACE LEADING MAN IN FILMS

Gary Cooper, Supporting Colleen Moore in "Lilac Time," Has a Very Picturesque Career Despite His Youth.

#### (Current Player Feature)

Gary Cooper, selected from many candidates for the leading role in support of Colleen Moore in First National's "Lilac Time," directed by George Fitzmaurice, Royal Theatre, Thursday, Friday and Saturday, was recruited by motion pictures from the ranch country of Montana.

Ambition as a cartoonist brought this popular leading man under the direct influence of motion pictures, but that is getting ahead of our story. As for the facts, Gary Cooper is six feet two, weighs 180 pounds, and has

reddish-brown hair and blue eyes. He was born in Helena, the capital of Montana, May 7th, 1901, the son of Charles H. and Alice H. Cooper, both of whom are still living.

## W. E. Wanser

(BUV)

### Auctioneer

GENERAL AUCTIONEERING  
Satisfaction Guaranteed  
Phone 13, Page, Neb.  
(27-1f)

#### I PAY HIGHEST CASH PRICES FOR

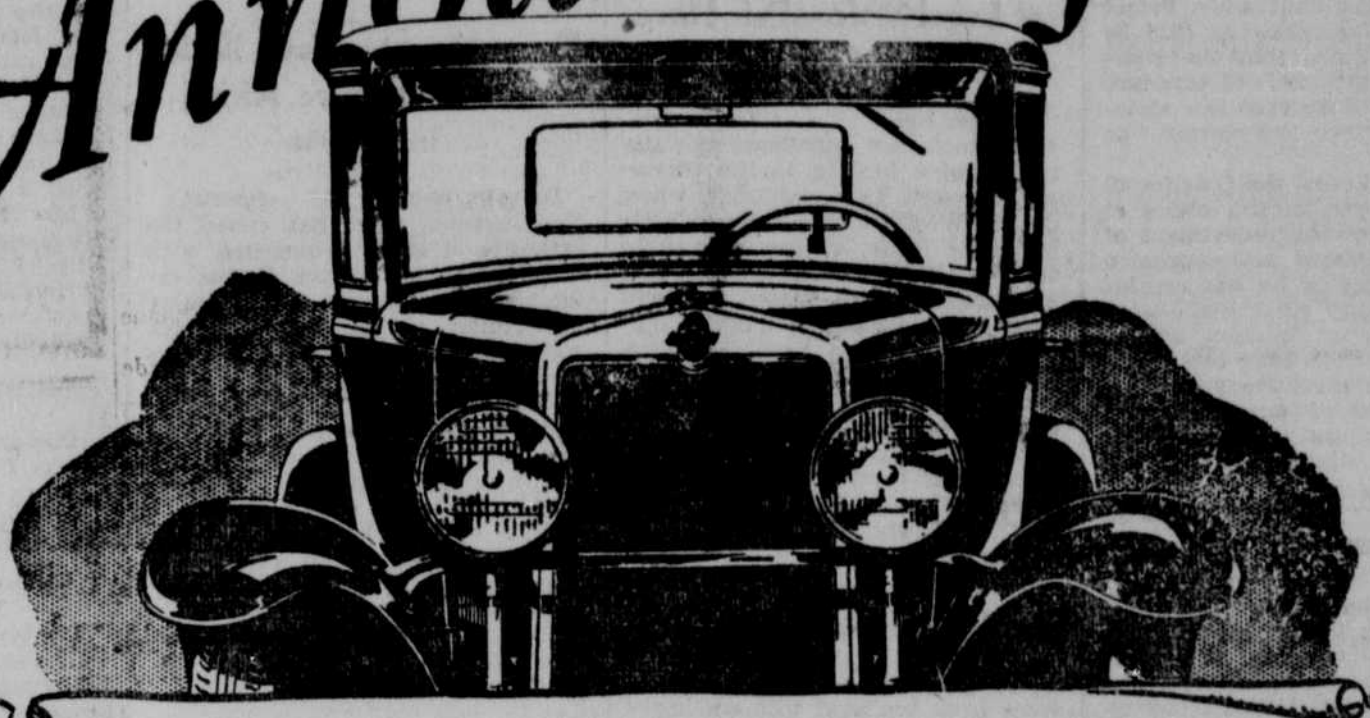
## Hides and Furs

3 Blocks South of Sunset Lodge  
Tourist Park.

HERMAN KLINGLER  
O'Neill, Nebraska

(27-1f)

# Announcing -



## The Outstanding Chevrolet of Chevrolet History

- a Six in the price range of the four!

The Chevrolet Motor Company announces The Outstanding Chevrolet of Chevrolet History . . . a Six in the price range of the four!

Spectacular as Chevrolet's achievements have been in the past . . . notable as its engineering triumphs have proved themselves to be—this remarkable new car dwarfs every previous Chevrolet accomplishment. Not only does it introduce into the low-priced field a new measure of performance, comfort, beauty and style—but it is sold at prices so low as to alter every previous conception of motor car value.

The new six-cylinder valve-in-head engine—developed from more than a hundred motors

designed especially for this sensational car—stands out as an engineering masterpiece. With a power increase of approximately 32% over the previous Chevrolet motor . . . with sensationally greater speed and faster acceleration—it offers a type of performance that is literally astounding . . . even to those who have been accustomed to driving cars costing hundreds of dollars more. And it affords an economy averaging better than 20 miles to the gallon of gasoline!

In appearance, this Outstanding Chevrolet is destined to become an automotive sensation—so smart, so stylish and so distinctively ap-

pointed that it rivals the costliest custom creations. The marvelous new Fisher bodies are longer, lower and roomier with adjustable driver's seat in all closed models—and reveal the matchless artistry of Fisher designers. With their modish new colors, their smart dual mouldings and their distinctive concave pillars, they achieve a degree of original beauty that has seldom been equalled.

You are cordially invited to visit our showroom and secure complete and detailed information on this sensational new car which will be ready for delivery beginning January 1st.

#### Advance Showings

The Outstanding Chevrolet of Chevrolet History will be displayed in a series of advance showings in the cities listed below:

New York, Nov. 24-29, Waldorf Astoria Hotel and Chevrolet Retail Store, Broadway at 57th . . . Detroit, Nov. 24-29, General Motors Bldg. . . Washington, Dec. 1-4, Mayflower Hotel . . . Chicago, Dec. 1-6, Pure Oil Bldg., Wacker Drive & Wabash Ave. . . Los Angeles, Dec. 1-6, Ambassador Hotel Auditorium . . . San Francisco, Dec. 8-13, Civic Auditorium, Larkin Hall . . . Cincinnati, Dec. 8-14, Hotel Sinton . . . St. Louis, Dec. 8-14, Arcadia Ballroom, 3515 Olive St. . . Atlanta, Dec. 18-22, Auditorium—Armory . . . Dallas, Dec. 18-22, Adolphus Hotel Junior Ballroom . . . Portland, Ore., Dec. 18-22, Public Auditorium.

The Roadster . . . .	\$525
The Phaeton . . . .	\$525
The Coach . . . .	\$595
The Coupe . . . .	\$595
The Sedan . . . .	\$675
The Sport Cabriolet . . . .	\$695
The Convertible Landau . . . .	\$725
Light Delivery Chassis	\$400
1½ Ton Chassis . . . .	\$545
1½ Ton Chassis with Cab	\$650
Sedan Delivery . . . .	\$595
All prices f. o. b. Flint, Mich.	

# Arbuthnot & Reka

Dealers, O'Neill, Nebraska

QUALITY AT LOW COST