

## OF INTEREST TO FARMERS

### SILLO ADVANTAGES

During the late summer pastures in most sections are short because of dry weather and because they are grazed too closely. If there is any grass, it is not succulent and is unpalatable. Consequently, cows will not consume enough for high milk production.

Experienced dairymen know that if the production of their cows has decreased during the hot, dry weather because of insufficient feed, it is difficult and practically impossible to bring the production back to normal during that milking period.

The summer silo is probably the best means of supplementing short, dried-up pastures. For a herd of 12 to 20 cows, a silo from 10 to 12 feet in diameter is best suited because the silage can then be fed out fast enough to prevent spoiling. If, however, all the silage is not fed during the summer it can be fed the following winter or the next summer. Silage will keep for several years. Dairymen frequently fill two silos, one for winter feeding and one for summer use.

Where it is not feasible to erect a silo for summer feed the short pasture may be supplemented by certain pasture crops instead of summer silage. In many sections sweet clover has proved very satisfactory for this purpose. It does well at this season and has the advantage of being a legume and consequently contains a large amount of protein. Alfalfa can also be pastured at this time and will assist materially in preventing the midsummer drop in milk flow.

In addition to good pasture high producing cows need to be fed grain to supply the required nutrients. Cows producing more than 20 pounds of milk daily should be given one pound of grain to each four to six pounds of milk produced. The grain feed may be a mixture of corn, oats, wheat bran, ground feed, and should always be more than 35 pounds of milk daily the grain mixture should contain one high protein concentrate of some sort.

### TESTING INCREASES PROFITS

Farmers who have had their herds tested for three or more years in a dairy herd improvement association realized \$25.56 more above feed cost from each of their cows last year than farmers with only a one-year check on the efficiency of their animals. Even farmers whose herds had been tested for only one year in a dairy herd improvement association realized \$10.61 more above feed cost on each of their cows than those farmers whose herds had been tested for milk and butter fat production for only one year.

Cows in those herds that had been tested for milk and butter fat yield for three years or more each averaged 33 pounds more fat for the year than cows in herds tested for only one year. Cows tested for two years averaged 19 pounds more butter fat for the year than those on which records had been kept only for one year.

A dairymen who says, "I have nothing but grades so it won't pay me to join an association," or "My herd is not good enough," or "Isn't large enough," either is making excuses or does not realize the benefits of and the need for a regular check on his cows. Dairymen who have large or small herds, have tested for one or five years, and have pure-bred, grade or mixed herds get very decided benefits from their membership and many would not think of dairying without the information furnished by the association records.

### VALUE OF SOY BEANS

Soybeans provide an excellent protein supplement for use in the grain ration for dairy cattle. Numerous experiments conducted by some of the leading experiment stations in the United States have proved ground soybeans to be equal to linseed meal as a protein supplement in the dairy ration. High protein feeds are relatively high in price and if dairymen would grow more soybeans they would become more independent of purchased protein feeds and insure a greater dairy income.

In the feeding trials conducted comparing ground soybeans with linseed meal, soybeans proved to be equal to the latter as a protein supplement for dairy cattle when fed in the grain ration of corn and oats.

In experiments conducted comparing soybean hay with alfalfa hay, soybean hay was found to be practically equal to alfalfa hay when fed to dairy cattle.

In trials conducted comparing ground soybeans with linseed meal as a protein supplement for the dairy ration, the ground soybeans proved to be worth one third more than the linseed meal as a supplement to a grain ration of corn and oats.

As a roughage for general herd feeding, good quality soybean hay has proved to be just as good as alfalfa hay on many farms and in some cases superior.

### BOTH BRAINS AND BRAWN

Many different elements enter into the business of farming—more than most of us realize. Take two men with farms equal in size and fertility, equal with respect to the lay of the land and all other factors that have a bearing upon returns, and a person often finds that one will make an outstanding success from the start while the other may ultimately fail. Some men are efficient in one or more lines while others seem to be efficient in most lines. Some appear to be natural born dairymen and poor beef and hog producers, while others are efficient hog men and a failure in the production of beef and dairy products. Again, some men are outstanding soil builders and grain producers, but relatively inefficient in the handling of livestock. On the

### AND ADVERTISING HELPS

The farmer who produces farm products of high quality is entitled to the premium which such products properly command. In the past, this premium has not always been paid to the grower. Growers are securing this premium in some sections. It is noteworthy that they are getting it only when they make an insistent and organized demand for it. Co-operative organizations are a means for securing this premium.

### DO YOU THINK SO?

Farm folks may well quote the man who prayed: "Lord, deliver me from my friends; I can take care of my enemies myself."

other hand that are also farmers in every community who seem to be able to make a success of all kinds of farm enterprises; at any rate they succeed in what ever they undertake.

The last mentioned group of farmers are invariably good business men. They think as well as work. They form a sort of partnership between head and hand that often brings surprising results.

### BOOST THE SOY BEAN

A man with 10 cows and a few head of young stock can use five to seven acres of soy beans to good advantage and the reduction of the oat acreage will aid that much in holding down the surplus of that crop. Men who feed two carloads of beef cattle a year can utilize from 10 to 12 acres of soys for that purpose to excellent advantage. Soy beans can also be used in a mixture with tankage and other products for hogs. Similarly, the feeder of sheep and lambs can use a certain amount of this crop. The more of the protein needed for properly balancing the feed for our livestock we can grow on our own farms, especially when this can be done by growing something in place of crops of which we already have a surplus, the better off we shall be. It means utilizing the land to the best advantage and the reduction of unnecessary surpluses.

### INSULATING PROFITABLE

There was a time when the average farmer paid far more attention to the buildings in which his stock was sheltered than to the home in which his family lived, but those days have passed.

Good roads and automobiles have brought the farmer's neighbors nearer. Visitors to the farm house are more frequent. As a result, the farmers all over the country are taking greater interest and pride in the appearance and livability of their homes.

Many farmers have discovered that by insulating the walls and roof of the farm house they can not only save about one-third of their winter's coal bill, but they can maintain their families in better health, cutting down doctor's bills for winter colds and bronchitis.

### PENNING THE BULL

If every bull was considered dangerous there would be fewer accounts of farmers being killed by their bull. The gentle bull is quite often the one that gets his man. A right good ugly bull means one of two things, that he will be sold to the butcher or placed where he can be handled with safety. Too often the former course is pursued and a valuable bull is lost. A proper place to keep and handle the herd sire is as important as a pump in the well or any of the other things that we see so commonly on the farm. Not only is this so from the safety standpoint but for the general good and successful management of a herd. A good herd sire should never be sacrificed because he is ugly. Build a bull pen.

### BETTER SOY BEAN HAY

A thing that is of vastly greater importance than the extra yield of legume hay from use of lime is the better quality of hay that can be secured by liming.

Take soy beans, for instance. While it is possible to boost the yield of hay as much as a ton per acre by liming, a more significant fact is this—the hay from the limed area contains perhaps 120 pounds more protein per ton. This is to say, a difference of \$6 per ton in feeding value on the basis of protein alone.

A great crop for the livestock farmer, soy beans are. For heavy soy beans should be cut when the beans are about half grown in the pods.

### ALWAYS KEEP RECORDS

In farm accounts kept in connection with the farm management extension work of a western agricultural college, it was found that of 158 farmers who had dairy cows, those who had 13 or more, had more than double the net income that was received by those having four or a smaller number of cows. The net farm income for the group having the smaller number of cows was \$1,448 as compared with \$3,422 for those farms having 13 or more cows. Two things helped the latter group make more money. These were a larger business and better cows. The cows in the first group made on an average return of \$52.27 while those in the group having the larger number of cows returned \$76.32.

### A SPRAYING AILMENT

If your eyes smart annoyingly when you retire at night after a day of spraying, a good way to relieve this trouble is as follows: Turn the face downward and rub the eyes with a dry handkerchief so as to cause tears to flow plentifully. This may make the smarting more severe at first so that you will be tempted to give up the treatment. If, however, you stick to it till you can get no more tears, relief will come.

### PROPER TIME TO CULL

The best time to cull is just when the hens quit laying. One should go through the flock once each month until the flock is reduced to the right size. Ordinarily, all hens will lay for their feed during the spring months, and after November 1 it is difficult to identify other than the superior birds. The later the culling is done, the greater will be the number discarded. If, however, the culls are taken out each month, the feed cost is cut down that much sooner.

### DID YOU KNOW THIS?

Idle horses need more than straw to line their stomachs in winter. The straw-fed horse sacrifices his bone structure for maintenance needs, and is likely to become spavined.

### WATCH THE PIGS

Prevention by raising them in clean places and looking them over for any signs of bowel trouble before vaccinating seem to be the only way to reduce these losses, according to the best judgment and experience of producers and the veterinarians.

### ADVICE WORTH HEEDING

It is what makes a horse laugh, a cow give milk, and it always puts the second curl in a pig's tail. For the land's sake, for your own good, and for the good of your animals grow some alfalfa.

### Some Revised Opinion

#### About the Red-Haired

Scientists have discovered all kinds of odd facts about humanity.

For instance, an expert recently stated that he had never seen a bald-headed lunatic!

Now comes the even more peculiar disclosure that red-headed girls may be bow-legged, but brunettes are, as a rule, knock-kneed. These facts are based on data supplied by a certain artists' club which has been collecting statistics respecting its models.

Another interesting point is that red-haired women suffer less from serious diseases than their darker sisters. This is due to the fact that their skin throws off poison more rapidly than a dark person's.

Also, red hair, which a generation ago was jeered at, nowadays is admired, as it should be. The red-haired girl has proved that she is hot-tempered, but, as a rule, much better balanced mentally than a brunette. —Exchange.

#### City Gets Unique Table.

Edinburgh, Scotland, has been presented a table composed of the different kinds of wood grown in Australia. It was the gift of the delegation of Scotchmen who recently traveled from Australia to visit their old country. The principal panels of the top of the table are finely grained, and show an interesting variety of colorings and markings. The design, with the square legs strengthened by crosspieces, is individual. The gift has been placed in the city hall.

#### Ancient Garb.

Gilbert K. Chesterton was defending women's apparel. "To say the least, they have not stood still. They are forever striving for added attractiveness, added comfort, added utility. But look at the men! "The most irrational fantasies often become the most lasting. Two such examples are what are commonly called a pair of trousers and a top hat."

#### Numismatic Treasure.

A pot of gold was found near Sant Malo, France, the other day in demolishing a building used as a hiding place by the Templars when Philippe le Bel sought to confiscate the wealth of the order. Most of the coins, worth a fortune to numismatics, bore the effigy of King Louis X.

#### Longest Roadway.

The Lincoln highway is the longest road in the world. It has a length of 3,331 miles.

A bird in the bush is worth two in the cat's mouth.

# ATWATER KENT RADIO

#### MODEL 40 ELECTRIC, \$77

For 110-120 volt, 50-60 cycle alternating current. Requires six A. C. tubes and one rectifying tube, \$77 (without tubes). Also Model 42 with automatic voltage regulator, \$86, and Model 44, an extra-powerful "distance" set, \$106 (without tubes). For direct current, Model 41, \$67 (without tubes).



What a comfort to know your radio is faithful ...

"MARY, turn on the radio and see what the weather man says. Then let's see if there isn't a good male quartette somewhere, or a brass band—"

What a satisfaction it is to know your radio will do its duty. Good, reliable Atwater Kent Radio! What a host of friends its dependability has made! "You can always count on an Atwater Kent"—wherever radio is known, that's what they say.

#### BATTERY SETS, \$49 - \$68

Solid mahogany cabinets. Panels finished in gold. Model 46, \$49; Model 49, extra-powerful, \$68. Prices do not include tubes or batteries.

On the air—every Sunday night—Atwater Kent Radio Hour—listen in! Prices slightly higher west of the Rockies.

ATWATER KENT MANUFACTURING CO.

4764 Wissahickon Ave. A. Atwater Kent, Pres. Philadelphia, Pa.

"Radio's Truest Voice"

Atwater Kent Radio Speakers Models E-2, E-3, same quality, different in size. Each \$20.

#### From the house current

The 1929 Atwater Kent all-electric set is powered wholly from the house lighting circuit. You snap a switch to turn the current on and off, just as you do with an electric light. Always ready to operate. Current costs only a fraction of a cent an hour.

#### —or from batteries

The 1929 battery set also has clear tone, selectivity, great range and plenty of volume, plus beauty and compactness.

#### —at a money-saving price

You cannot buy the all-round satisfaction that Atwater Kent Radio gives, for less than the figures quoted here. You can pay a great deal more without getting more.



Had To.

Old Man—Yes, sir, I've smoked for 29 years and then all of a sudden I quit.  
Young Man—What brought about the change after so many years?  
Old Man—Went to work in a gasoline plant.

#### Chief Mourner.

"Mrs. Smith seems to have got over the death of her first husband."  
"Yes, but her second husband hasn't."—London Tit-Bits.

We can tell science that we don't care half as much where we came from as where we're going to.

#### Vanquished Hopes.

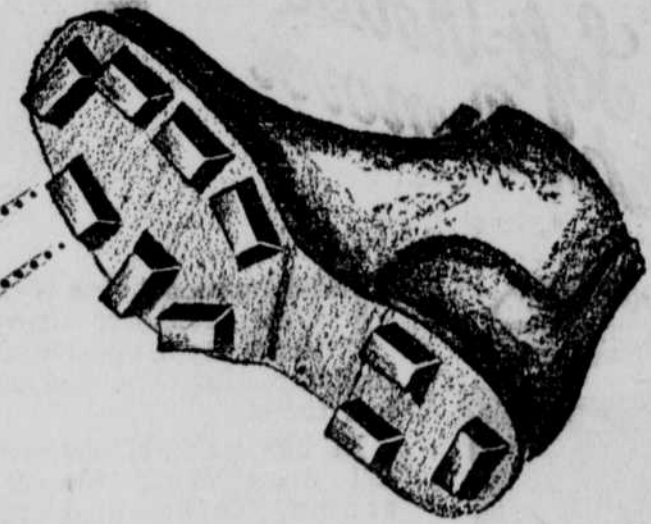
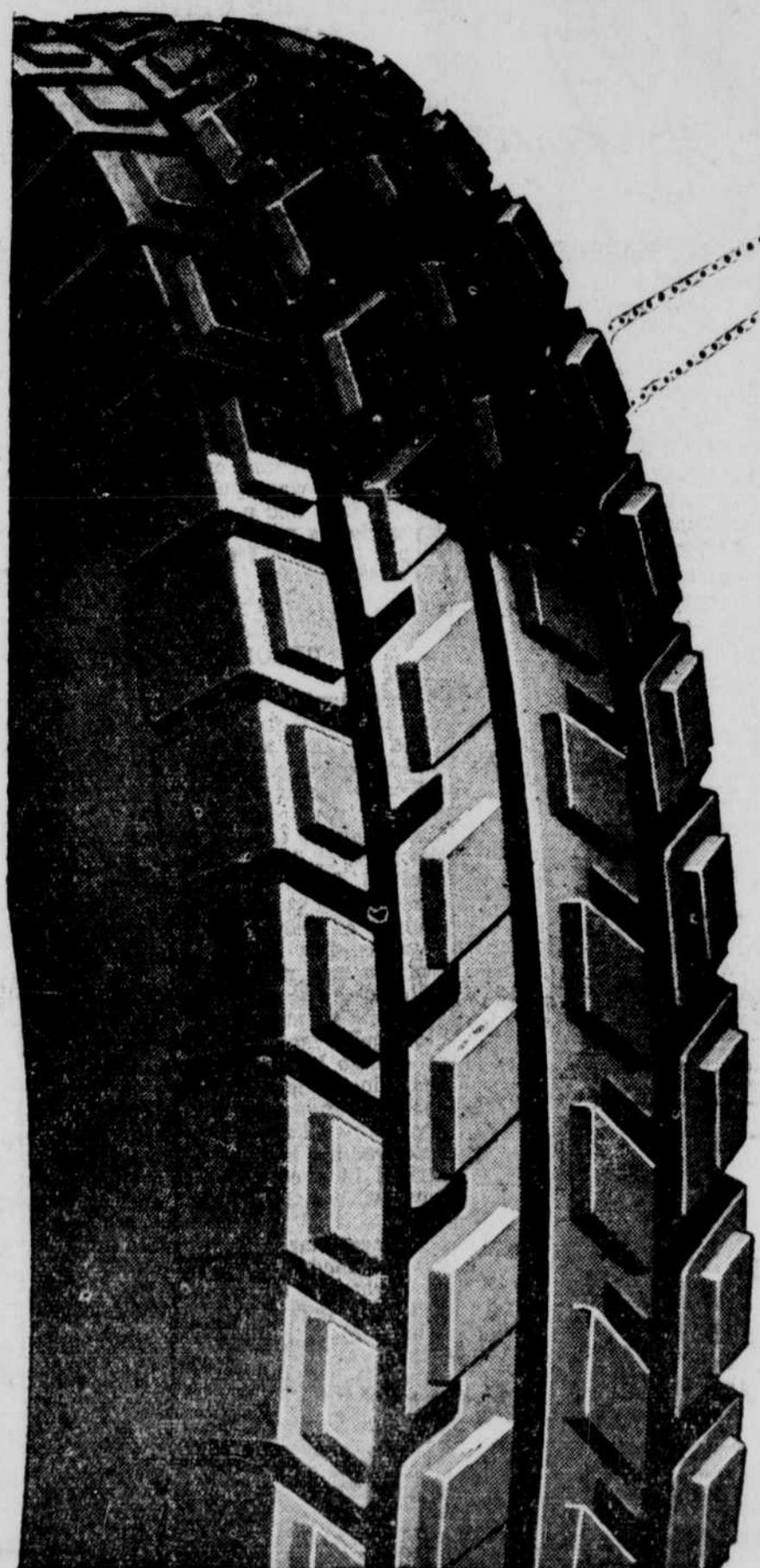
Mother—Junior, do you know where the new candy shop is on Main street?  
Junior (expectantly)—Yes!  
Mother—Well, I want you to go into the grocery next door and get me a pound of onions.

#### Talking of Jokes.

He had just proposed. She had just refused him.  
"You are just a joke," she said.  
"Well, can't you take a joke?" he asked.

No one expects life to be all roses, but he would like at least a year or two to be roses.

# eliminates chains !!



cleated tires that grip like a cleated shoe

CHAINS this winter? NO! Yet, safety all the time—not just when chains are on! And quietness all the time—not just when chains are off!

Cleated tires are the tire industry's answer to winter's most annoying problem. What an innovation!

The picture tells the story. Cleated tires ... grip wet roads ... bite into snow ... are sure-footed in slush and mud ... respond effectively to the demands of four-wheel brakes.

AND THEN, after the trying conditions of winter have worn down the cleats, comes into play the standard long mileage Dunlop non-skid balloon tread ... ready when spring comes to take over the changed road demands brought about by the difference between winter and spring road conditions.

The winter mileage provided by the cleats themselves is entirely additional to the standard tread mileage.

Dunlop considers this winterized tire one of the greatest of its many inventions for the safety and comfort of motorists.

To Dunlop dealers: If the Dunlop representative has not had time to reach you, wire your orders to the nearest Dunlop warehouse. DUNLOP TIRE AND RUBBER CO., BUFFALO, N. Y.

new **DUNLOP** WINTERIZED TIRE