

THE FRONTIER

D. H. Cronin, Editor and Owner

Entered at the postoffice at O'Neill, Nebraska, as Second Class Matter.

SUBSCRIPTION

One Year, in Nebraska \$2.00
One year, outside Nebraska. 2.25

Every subscription is regarded as an open account. The names of subscribers will be instantly removed from our mailing list at expiration of time paid for, if publisher shall be notified; otherwise the subscription remains in force at the designated subscription price. Every subscriber must understand that these conditions are made a part of the contract between publisher and subscriber. Display advertising is charged for on a basis of 25c an inch (one column wide) per week. Want ads 10c per line, first insertion, subsequent insertions, 5c per line.

Official Proceedings of the Holt County Board

O'Neill, Nebr.,
January 6, 1942, 10 A. M.

Holt County Board of Supervisors met as per adjournment. All members present except Stein. Meeting called to order by Chairman.

Minutes of previous meeting were read and on motion were approved as read.

Board spent forenoon in auditing Road and General Fund Claims.

12:00 Noon, on motion, Board adjourned until 1:00 P. M.

W. E. WULF, Chairman.

John C. Gallagher, Clerk.

O'Neill, Nebr.,
January 6, 1942, 1:00 P. M.

Holt County Board of Supervisors met as per adjournment. All members present except Stein. Meeting called to order by Chairman.

On motion, the following claim was allowed on unemployment relief fund:

B. T. Winchell \$500.00

The following claims were audited and approved and on motion were allowed and warrants ordered drawn on Road Fund in payment of same:

John B. Friday \$19.60

Albert Whitney 12.80

Harry Sullivan 24.00

Francis Brandt 24.00

John Bonenberger 22.00

Ray Schaffer 22.50

Donald Weller 22.00

Sinclair Refg. Co. 33.20

Richard Minton 16.00

Ed J. Matousek 10.00

Matilda Brown 28.40

Central Supply Co. 91.80

Charles Strong 24.00

The following Claims were audited and approved and on motion were allowed and warrants ordered drawn on General Fund in payment of same:

Ed J. Matousek \$ 7.00

Walter K. Smith 24.00

Francis D. Lee 80.00

Seth Noble 359.12

Ira H. Moss 179.30

J. H. Gibson 29.60

Hastings Typewriter Co. 2.66

Ira H. Moss 35.00

Robert Williams 7.50

On motion, the order for Mothers Pension for Elizabeth Charvat was approved and warrant drawn in accordance therewith. Carried.

Minutes of this meeting were read and on motion were approved as read.

5:00 P. M., on motion, Board adjourned, Sine Die.

W. E. WULF, Chairman.

John C. Gallagher, Clerk.

O'Neill, Nebr.,
January 13, 1942, 10 A. M.

Holt County Board of Supervisors met on this date as required by Statute for the purpose of reorganizing Board for the year 1942.

All members present except Wulf.

Meeting called to order by Clerk.

In the absence of Supervisor Wulf, no action was taken on reorganization of the Board.

Board spent day in auditing and checking over General, Road and Bridge claims on file against the county.

5:00 P. M., on motion, Board adjourned until January 14, 1942, 9:00 A. M.

John C. Gallagher, Clerk.

O'Neill, Nebr.,
January 14, 1942, 9 A. M.
Holt County Board of Supervisors met as per adjournment. All members present. Meeting called to order by Clerk.

First order of business was the election of Chairman for the ensuing year.

Motion by Smith, seconded by Wulf that election of Chairman be made by ballot. Carried.

The first ballot resulted as follows: Matousek 3, Schollmeyer 1, Gibson 1. As a result of this ballot, Mr. Matousek was declared elected Chairman for the ensuing year.

12:00 Noon, on motion, Board adjourned until 1:00 P. M.

ED J. MATOUSEK,
Chairman.

John C. Gallagher, Clerk.

O'Neill, Nebr.,
January 14, 1942, 1:00 P. M.

Holt County Board of Supervisors met as per adjournment. All members present except Gibson. Meeting called to order by Chairman.

The Chairman submitted the following committees for the ensuing year.

Courthouse—Sullivan, Wulf, Smith.

Finance—Schollmeyer, Stein, Sullivan.

Printing—Stein, Smith, Schollmeyer.

Tax—Gibson, Schollmeyer, Stein.

Bond—Sullivan, Gibson, Schollmeyer.

Bridge—Smith, Wulf, Sullivan.

Road—Wulf, Smith, Gibson.

Settlement Co. Officers—Gibson and Board.

Claims—Smith and Board.

Motion by Stein, seconded by Smith that The Frontier be designated as official paper for the year 1942. Carried.

On motion, the bond of Roma MacLachlan as deputy clerk of Court be approved. Carried.

Motion by Schollmeyer, seconded by Sullivan that the following Wage Scale for year 1942 be adopted:

Single Man 35c per hr.

Man and Team 55c per hr.

Man and 4 Horses 75c per hr.

Common Bridge

Labor 35c per hr.

Foreman Bridge

Workers 50c per hr.

Tractor and Grader

Operator 50c per hr.

Road Dragging

(Round trip) 60c per hr.

Tractor Dragging 1.00 per hr.

Truck Driver 40c per hr.

Carried.

The following claims were audited and approved and on motion were allowed and warrants ordered drawn on General Fund in payment of same:

Arbuthnot Oil Co. .56

The Augustine Co. 37.51

The Augustine Co. 3.80

The Atkinson Graphic 2.20

Churchill Mfg. Co. 21.40

Dr. L. A. Carter 16.00

The Augustine Co. 132.71

The Augustine Co. 6.55

The Atkinson Graphic 10.85

Churchill Mfg. Co. 36.87

Dr. L. A. Carter 8.00

Dr. L. A. Carter 8.00

Julius D. Cronin 3.00

Julius D. Cronin 3.00

Hammond & Stephens Co. 42.27

Industrial Chem. Lab. 16.50

Industrial Chem. Lab. 58.00

United Chemical Co. 20.53

K-B Printing Co. 76.45

K-B Printing Co. 4.00

The T. C. Lord Co. 25.35

The T. C. Lord Co. 15.23

Milburn & Scott Co. 59.67

Milburn & Scott Co. 16.96

Milburn & Scott Co. 1.38
The Norfolk Daily News 35.50
Omaha School Sup. Co. 12.53
Lynus Howard 108.50
Perkins Bros. Co. .59
State Journal Printing Co. 25.00
Stephenson School Sup. Co. 101.39
Stephenson School Sup. Co. 25.31
Stephenson School Sup. Co. 238.26
University Pub. Co. 10.74
Uhl Transfer 2.50
University Pub. Co. 10.29
Underwood Elliot Fisher 12.03
Julius D. Cronin 3.00
Hammond & Stephens Co. 3.00
Hammond & Stephens Co. 392.26
Industrial Chem. Co. 40.32
Industrial Chem. Co. 12.00
The Parawax Co. 38.25
K-B Printing Co. 22.46
K-B Printing Co. 3.00
The T. C. Lord Co. 118.68
Milburn & Scott Co. 3.73
Milburn & Scott Co. 4.28
Milburn & Scott Co. 37.05
The Norfolk Daily News 18.00
Omaha School Sup. Co. .92
Omaha School Sup. Co. 11.61
Perkins Bros. Co. 118.50
Standard Office Equip. Co. 4.62
Stephenson School Sup. Co. 26.60
Stephenson School Sup. Co. 9.70
Stephenson School Sup. Co. 40.86
The Thrifty Printers 1.75
The University Pub. Co. 10.29
Uhl Transfer .50
University Pub. Co. 59.15
Nebr. Inst. Feeble Minded 352.72

5:00 P. M., on motion, Board adjourned until January 15, 1942, 9:00 A. M.

ED J. MATOUSEK,
Chairman.

John C. Gallagher, Clerk.

O'Neill, Nebr.,
January 15, 1942, 9:00 A. M.

Holt County Board of Supervisors met as per adjournment. All members present. Meeting called to order by Chairman.

Minutes of previous meeting were read and on motion were approved as read.

Board spent forenoon in auditing Road and General Fund claims.

12:00 Noon, on motion, Board adjourned until 1:00 P. M.

ED J. MATOUSEK,
Chairman.

John C. Gallagher, Clerk.

O'Neill, Nebr.,
January 15, 1942, 1:00 P. M.

Holt County Board of Supervisors met as per adjournment. All members present. Meeting called to order by Chairman.

The following claims were audited and approved and on motion were allowed and warrants ordered drawn on Road Fund in

payment of same:

Arbuthnot Oil Co. .56

The Augustine Co. 37.51

The Augustine Co. 3.80

The Atkinson Graphic 2.20

Churchill Mfg. Co. 21.40

Dr. L. A. Carter 16.00

The Augustine Co. 132.71

The Augustine Co. 6.55

The Atkinson Graphic 10.85

Churchill Mfg. Co. 36.87

Dr. L. A. Carter 8.00

Dr. L. A. Carter 8.00

Julius D. Cronin 3.00

Julius D. Cronin 3.00

Hammond & Stephens Co. 42.27

Industrial Chem. Lab. 16.50

Industrial Chem. Lab. 58.00

United Chemical Co. 20.53

K-B Printing Co. 76.45

K-B Printing Co. 4.00

The T. C. Lord Co. 25.35

The T. C. Lord Co. 15.23

Milburn & Scott Co. 59.67

Milburn & Scott Co. 16.96

payment of same:

D. E. Aler \$70.00

Edward Alder 11.00

Alder Bros. 2.00

E. J. Allen 6.60

Ellis Butterfield 3.00

Lloyd Brady 50.00

Theo. E. Crawford 11.10

Thomas Hiscocks 3.60

Fred W. Lindberg 23.75

L. J. Pochop 4.05

Charlie Schollmeyer 8.00

Andrew Schmidt 10.80

Joe Schmidt 27.90

Raymond Schmidt 13.50

Bob White 1.00

C. E. Mitchell 20.25

Ries Bros. 4.50

John Sullivan 10.00

American Gear Co. 14.28
Arbuthnot Oil Co. 8.37
Crabb Oil Co. 4.25
Ed Hagensick 2.76
Island Sup. Co. 12.26
Seth Noble 25.35
Texaco Service Station 63.44
T. M. Harrington 1.35
Tom Alder 4.75
Harold Alder 7.50
E. J. Allen 13.50
Bernard Allen 2.50
Willis Boelter 8.50
Albert Carson 3.60
John Derickson 19.00
C. E. Linn 8.00
Bernard Miller 4.50
E. W. Sterner 4.35
Herman Schollmeyer 8.15

Joe Schollmeyer 24.15
John Schmidt 18.00
Awalt Spangler 2.80
Island Supply Co. 23.25
Clem Olberding 32.85
D. A. Schafer 4.50
John Sullivan 10.00
The Alemito Co. 58.81
The Balbach Co. 5.00
J. P. Gans 8.00
Interstate Mach. & Sup. Co. 27.93
Island Sup. Co. 20.15
Spittler Bros. 4.00
Gamble Store 37.35
Atkinson Lumber Co. 42.00

(Continued Next Week)

Mr. and Mrs. Marvin Clouse

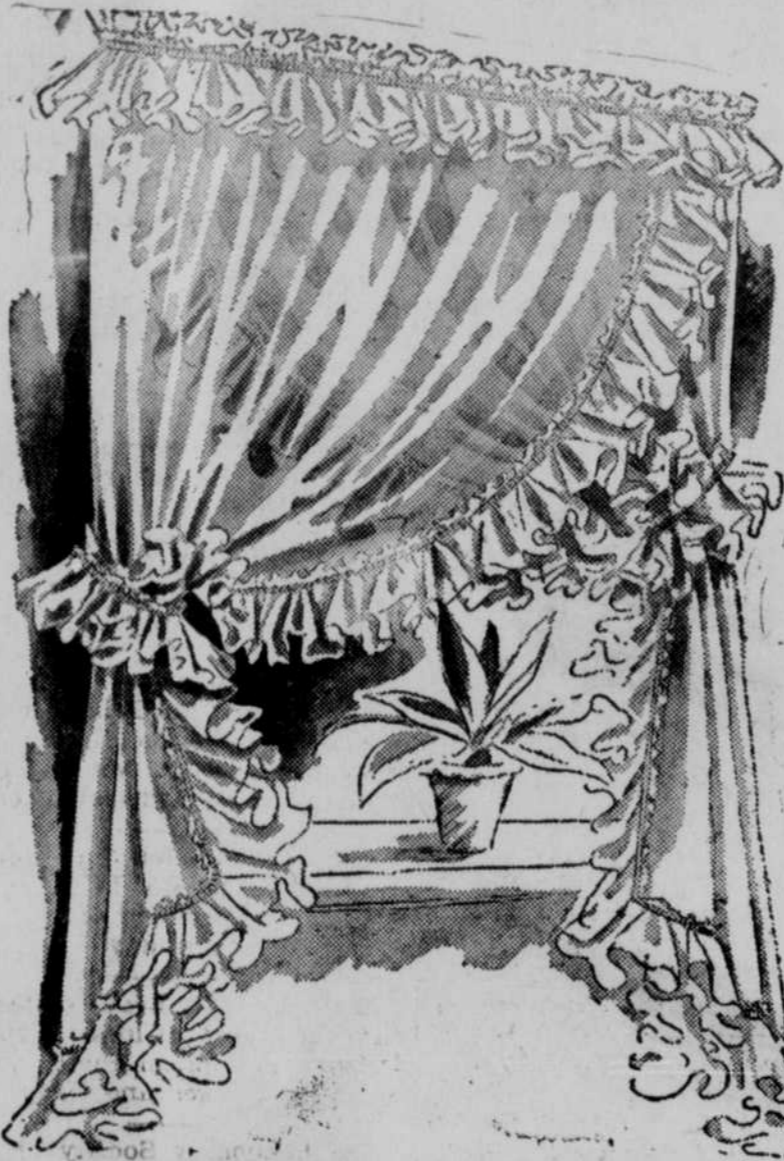
entertained around fifty friends and neighbors Tuesday evening at a farewell party honoring their son, Robert Clouse, who left this morning for the U. S. Army. The evening was spent playing cards. Refreshments were served at the close of the evening.

Mr. and Mrs. Max Honke, Miss Eva Barnes and Miss Mary Wills of Butte were dinner guests of Mrs. Anna McCartney Friday evening and after the dinner they attended the basketball tournament.

Mr. and Mrs. D. Young, Mrs. A. Jaskowski, and Mrs. B. Brennan spent Saturday in Norfolk.

Make All Your Windows Dream Windows With The Spring Freshness Of Pretty Curtains

At Surprisingly Low Cost



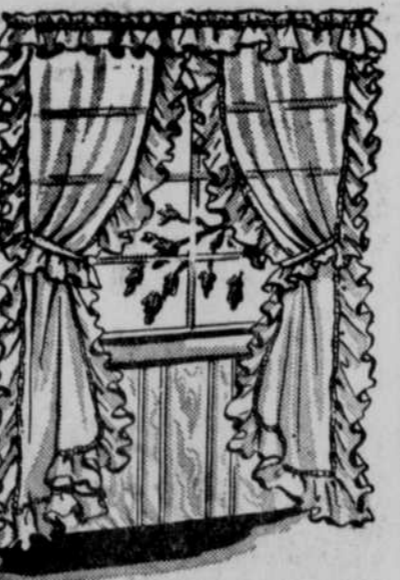
Your home is your stage setting which can flatter you or let you down. Its windows are the "backdrop" against which your personality is expressed vividly, or drably subdued. Make all your windows dream windows then; give any room a new beauty and vitality (still using the same furniture and floor covering) by reframing your windows with pretty and charming new curtains. Even limited budgets will cheer our low prices. Come and see the spring beauties now here.

Picture Your Bedroom Windows Looking Like This

With Crisply New Fluffy Extra Wide Pin Dot Curtains

Each 105-in. Wide **\$398** Pair

Curtains of cream marquisette with thousands of woven-in pin dots sprinkling them like myriads of sleet pellets. Extra wide—each curtain 105-in. and 2½ yds. long—they may be crisscrossed in full, graceful folds, the 6-inch ruffle falling in a frothy cascade to the floor. Strap tieback, felled hems, all selvage removed. 46-in. width curtains \$1.96 64-in. width curtains \$2.98



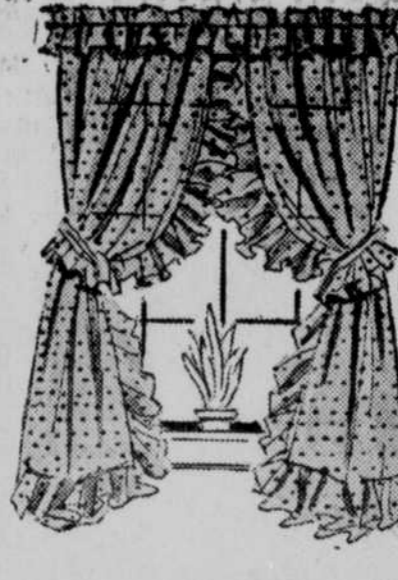
You'll Love These Ruffle Frame

"Pin Dots"

\$139

Pair

Bilowy cream marquisette accented with pin dots. Ruffles up both sides, top and bottom, to frame your windows in loveliness. Each curtain is 53" wide and 2¼ yds. long. Hang them crisscross, as side loop, straight panel or tie-back. You will love them.

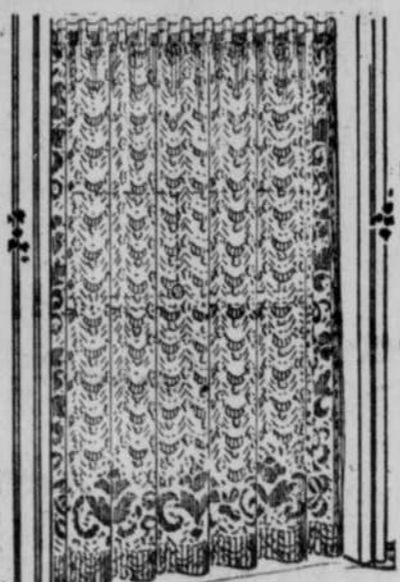


Frilly Beauties! Wide Ruffled Priscillas

98c

Pair

Priscillas fresh as spring with 5" ruffles and ruffled top. In cream or pastel colors to match with your room. Sprinkled with plump cushion dots. Ruffled tie backs. Wide enough to drape in flowing, graceful folds. A long time favorite curtain.



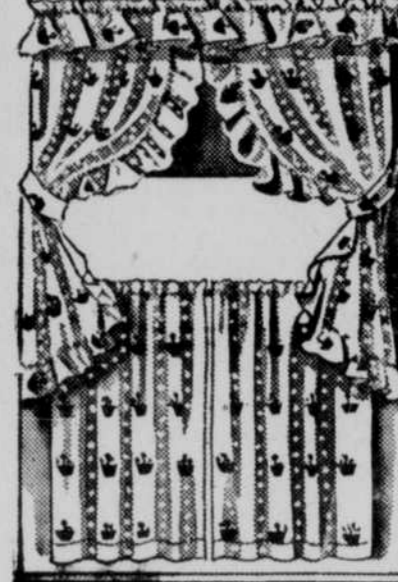
Decorator Smartness For Very Little Money

Lace Panel Curtains

\$139

Each

New—and a wealth of light, airy lace for your windows. Not only fashionable and decorative, but the 8-point mesh, spun of fine Sea Island yarn, is durable, washable. Hemmed sides to hang straight. Each panel is 48" wide. All-over or bordered.



Give Charm To Kitchen—Bathroom

Cottage Sets

Special at

79c

Pair

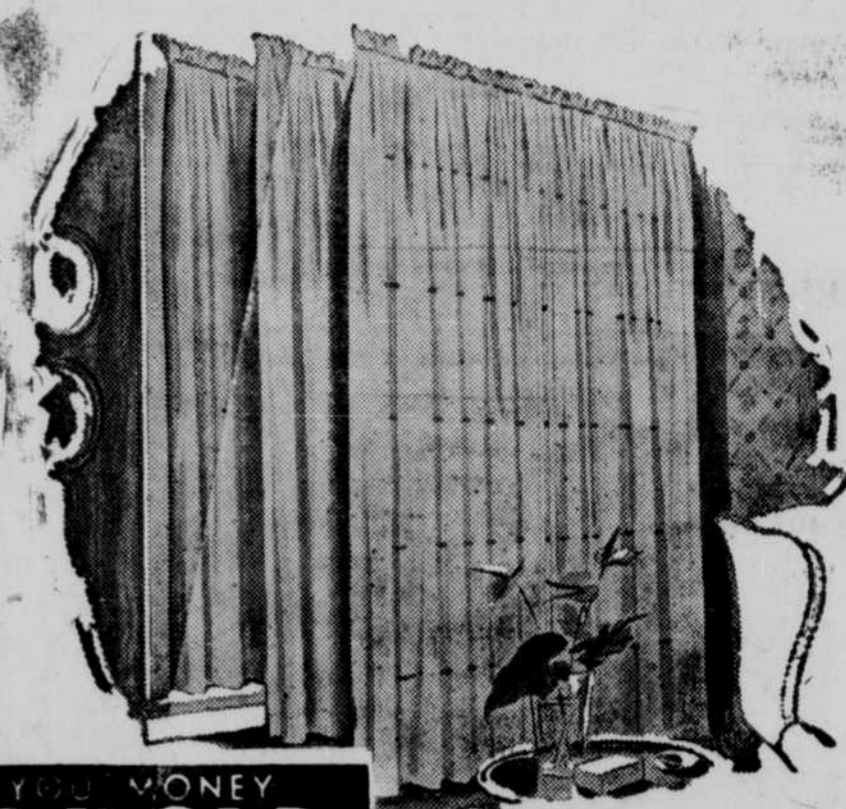
Curtains "make" the kitchen or bathroom as well as other rooms. This standout value brings you brand new cottage sets of unusual quality at this low price. Cream ground with unique figures contrasting in gay colors. Complete with tie backs.

Neither Sun Nor Suds Will Dull The Beauty Of These

RAYON MARQUISSETTE PANEL CURTAINS

Guaranteed Washable **\$149** Each

Curtains that are a soft, sunshiny shimmer at your windows, that flood the room with a muted glow of light. Elegant and gracious, sheer as a breeze, with loom hemmed edges and headed for hanging. Each 48-in. wide, 2¼ yds. long. Finest quality rayon in soft neutral shades.



WE SELL FOR CASH AND SAVE YOU MONEY
BROWN-McDONALD
CONSISTENT LOW PRICES THE YEAR ROUND

(Made up without extra charge)
2 yards long \$1.45
2½ yards long \$1.75

MONEY in bank
Here means you
have cash for instant
use at any time, while
we assume the