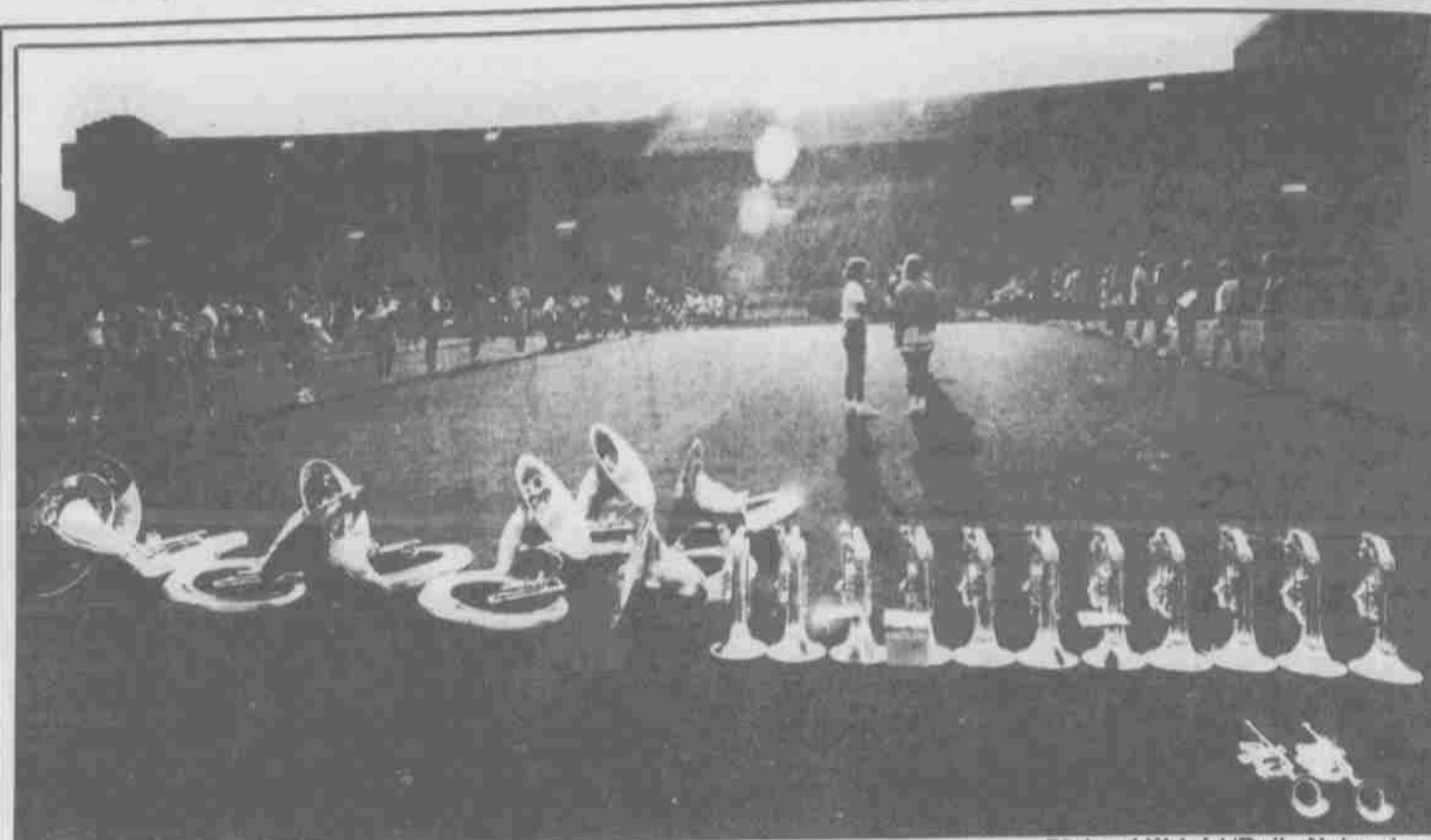


The Cookie Company
 —There is no substitute



2 for 1 SPECIAL
 on
 50¢ cookies

expires Aug. 30. One coupon per person please.
 138 No. 12th 475-0625



Richard Wright/Daily Nebraskan

Tubas on the grass, alas

Members of the 245-strong UNL Marching Band let their horns rest while they go through their steps during practice Tuesday morning. The band started their five practices a day on Saturday.

EXPLORING LIFE'S CHALLENGES

ihcc Indian Hills College/Career
 Sundays, 10:45 a.m., 1000 S. 84th St.
ON CAMPUS: Mondays, 7:30 p.m.
 East Campus Union, Starting Sept. 15
 For Information, call 483-4541

How to get here from there

By Curt Wagner
 Staff Reporter

Traveling to class every day does not have to be difficult and frustrating for commuting students and staff members. Several headache-free modes of transportation are available for UNL commuters.

BUSES: The Lincoln Transportation System will reorganize Lincoln bus routes on Aug. 25, according to Debbie Sovereign, LTS administrative aide. The new route system will not affect the existing shuttle that travels from Lyman Hall on City Campus to Burr-Fedde halls on East Campus.

Buses will continue to stop at every intersection outside the downtown loop, Sovereign said. Downtown buses stop at their designated intersections and

at 11th and O streets. Sovereign said that express routes, which only stop at a few designated areas, also will be available to commuters.

City bus rides cost 65 cents, and the UNL shuttle costs 25 cents. Correct change is advised because bus drivers will not make change. If a commuter does not wish to carry a lot of change around, passports are available for \$20, Sovereign said. These passports give the commuter unlimited bus rides for one month. Punchcards good for 20 rides are available for \$13. Both passports and punchcards can be purchased at Lincoln banks, both student unions and the Nebraska Bookstore.

Transfers are available, Sovereign said. Transfers can be obtained from the driver after the fare is paid. Two types of transfers are available. Regular transfers allow commuters to board a different bus providing travel connections. These transfers are good for one hour or the next connecting bus. Stop-over transfers allow passengers to take the same route and direction after a one-hour stopover.

Information on routes and schedules can be picked up at local banks, UNL unions or by calling the Lincoln Transportation System at 476-1234.

Sovereign said that the carpool service formerly provided by LTS has been ended due to budget cuts.

PERSONAL VEHICLES: Driving to school on your own should be easier this year, according to Lt. John Burke of the UNL Police Department

Parking Division.

Burke said construction around either campus will not cause problems for drivers this year. He said he foresees no lack of parking spaces for commuters.

"We have the space, but it is just not next to classes," Burke said.

Several areas on both campuses available for commuter parking are hardly ever used, Burke said. On City Campus 271 stalls on 14th Street, 265 stalls south of Bob Devaney Sports Center and 175 stalls next to the Brickyard sit empty most of the time. On East Campus, available parking is overlooked near the greenhouses on North 38th Street. Burke said if people would utilize these areas and walk just a little farther, they wouldn't have any parking problems.

An additional parking area of 10 acres on 19th Street, from R to Vine streets, also is being proposed, Burke said.

To park in these areas students need to purchase parking permits at the Sports Center Aug. 20 to 26 from 8:30 a.m. to 5 p.m. Permits cost \$40.

Burke said students should bring their vehicle registration when they buy their permits. They also should study the parking maps so they know the areas they can use.

BIKING AND WALKING: These are two good alternatives if you like to leave early for class and if the weather is suitable.

Lincoln has about 10 miles of off-street bike paths and several miles of marked street routes. Bicycle licenses cost \$1 and can be purchased at most city fire stations, some bicycle shops and the UNL police office, 1235 N. 17th St. Further information is available at the Lincoln Police Department's Traffic Engineering Division at 233 S. 10th St.

FREE HAIRSTYLES Hair Models Needed!

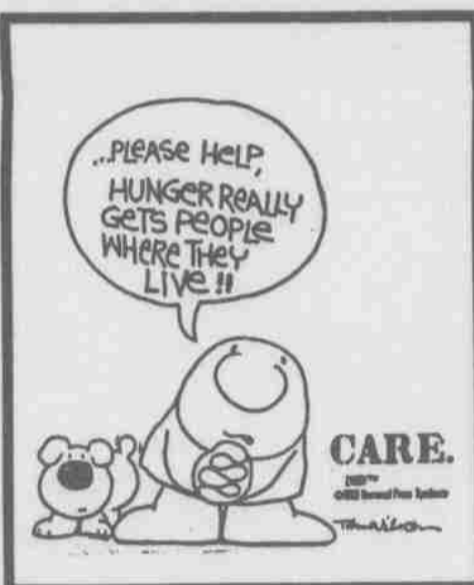
Both men and women needed for a Roffler Hair Show on Sunday, August 24th at the Hilton Hotel (9th & P) in Lincoln.

Two nationally known hairstylists will be demonstrating the latest in cuts and perms before an audience of local stylists.

You will need to come to the El Toro Hair Center on Saturday, August 23rd at 6 p.m. so the two demonstrators can discuss with you what they would like to do with your hair on Sunday. El Toro's address is 208 N. 13th, under the Douglas 3 theatre at 13th & P.

Everyone will receive a perm and a haircut. Some of the work will be done Saturday evening and you will need to be able to be at the Hilton until about 4 p.m. on Sunday.

Believe me, it is a fun day and of course it is all done FREE. If you have any questions, call the Roffler distributor, Bob Taylor at 477-7518.



Great Looking Hair At A Great Price

- Haircut 7.00
- Shampoo Style 6.00
- Perfect Perm 13.50
- Highlight 17.50



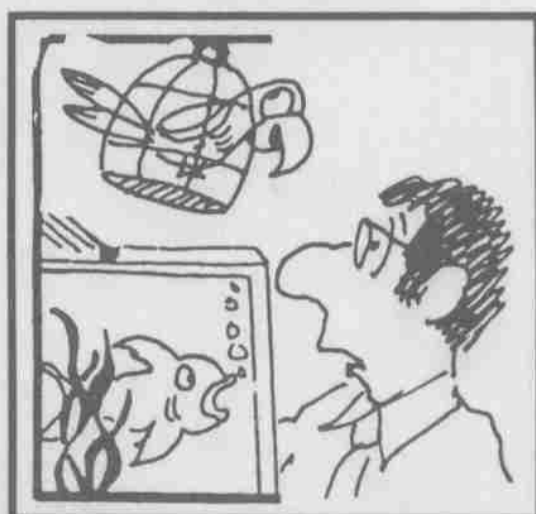
Hairstyling on your schedule. Stop in; sign up; and the stylist will give you the great look and great service you want. Prices slightly higher for long hair. Appointments accepted but not always necessary.

Perm, Haircut & Style **15.00**

Beauty Break
 477-6921 477-6922

Skywalk Level — Atrium
 Open Mon.-Fri. 8-9; Sat. 8-5:30; Sun. 12:00-5:00

PETS...



★ PROVIDE ENJOYMENT ★ A GREAT HOBBY
 ★ A CONVERSATION PIECE FOR YOUR ROOM
 FOR PETS, COME VISIT THE SPECIALISTS AT

The
fish store

STORE HOURS: Mon-Fri 11-8, 921 North 48th St.
 Sat. 10-6, Sun. 1-6 Phone 466-7811

LINCOLN'S MOST COMPLETE STORE FOR ALL YOUR PET SUPPLIES

More women in CBA

For the first time in its 68 year history, almost half of the students enrolled in the College of Business Administration at UNL will be women.

According to Associate Dean Clay Singleton, the increase in women is one of the primary factors in the college's continuing enrollment increases. Singleton said approximately 4,000 students will enroll in the College of Business Administration this fall, 15 percent more than a year earlier. The College expects more than 1,200 freshmen to indicate their intention to major in business administration — up from 964 freshmen last fall.

Singleton suggested the major reason for the ever-increasing popularity of business administration as a major for both men and women students is pure economics.

Singleton said the college's allure continues despite the high academic standards that students must maintain. A 2.5 grade-point average (C plus) is required for College of Business Administration courses, including calculus, statistics, math and economics.