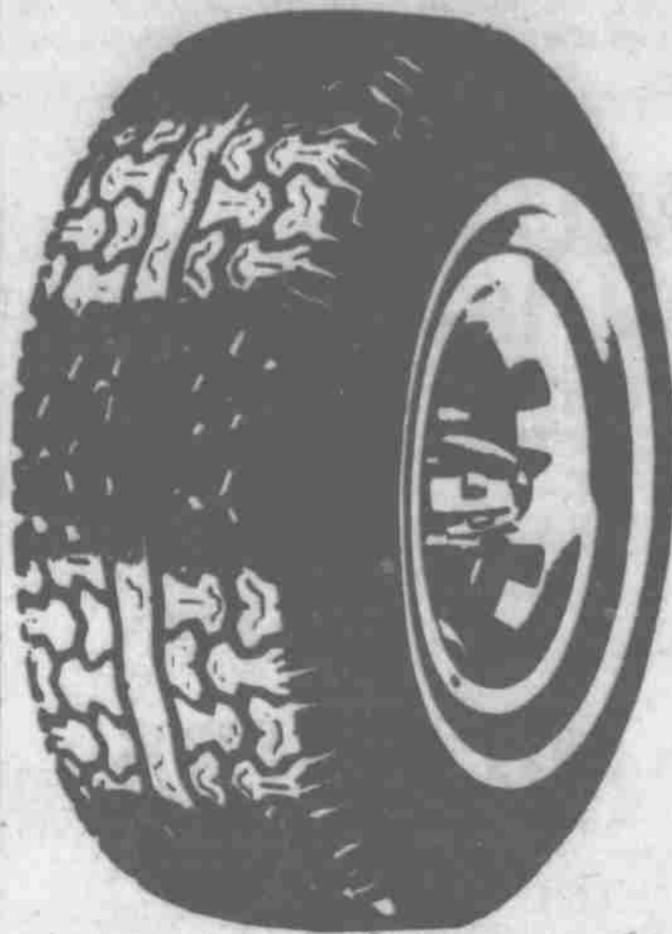


BF Goodrich

YOUR BEST BUY

BF Goodrich



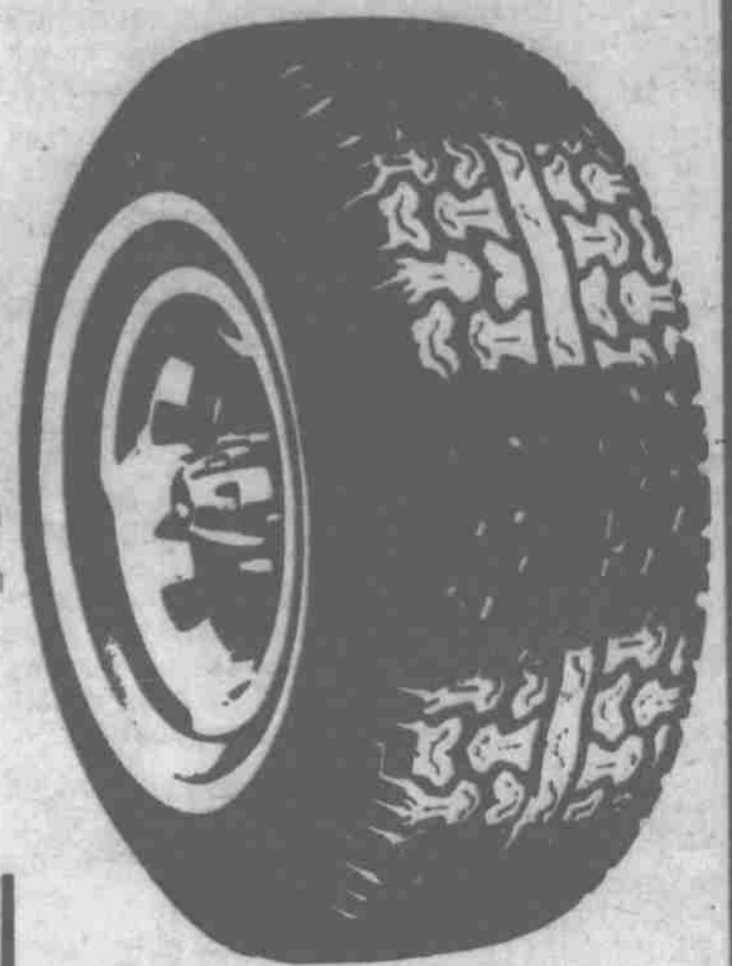
Capitol Tire

More Than a Tire Store!

1/2 PRICE SALE

**LIVESAVER ALL-SEASON
"STEEL BELTED RADIAL"**

BUY THE FIRST TIRE AT OUR REGULAR TRADE-IN PRICE — 2ND TIRE AT 1/2 PRICE.



RADIAL SNOW TIRES

Size	Double Steel Belted	FET
P175/80R13	\$47	1.98
P185/75R14	\$56	2.25
P205/75R14	\$58	2.43
P215/75R15	\$68	2.71
P225/75R15	\$70	2.99
P235/75R15	\$73	3.04

WHY PAY MORE!

Size	Capitol's Reg. Trade-in Price	1/2 Price
P155/80R13	56.00	28.00
P165/80R13	58.00	29.00
P175/80R13	62.00	31.00
P185/80R13	64.00	32.00
P195/75R14	74.00	37.00
P205/75R14	76.00	38.00
P215/75R14	78.00	39.00
P205/75R15	80.00	40.00
P215/75R15	84.00	42.00
P225/75R15	88.00	44.00
P235/75R15	90.00	45.00

PLUS F.E.T. 1.51-2.90 per tire

SNOW TIRES

Size	19 ⁹⁵	+ 1.50 Blk. Blom
6.00x12		
A78-13	29.00	1.71
E78-14	39.00	2.29
F78-14	41.00	2.42
G78-14	42.00	2.56
G78-15	45.00	2.80
H78-15	48.00	2.85
L78-15	49.00	3.11

All above Tires Polyester — Blk.

Tire Studding \$9.95

ANTIFREEZE \$2.99
Limit 2 gallon



WINTER TUNE-UPS

(Electronic Ignition)

- \$29⁹⁵** 4 cylinder
 - \$36⁰⁰** 6 cylinder
 - \$46⁰⁰** 8 cylinder
- Install resistor plugs
 - Set timing
 - Inspect rotor, distributor cap, PCV valve, ignition, cables, air filter, crank case, vent filter and vapor canister filter.
 - Adjust idle speed
 - Test battery & charging system
- All conventional ignitions \$5 more! Most U.S. cars and light trucks plus Datsun, Toyota & Honda.

IMPORT MUD & SNOW TIRES

Steel Belted — Blk

155SR12	\$36	\$1.41
155SR13	\$37	\$1.50
165SR13	\$38	\$1.62
165SR15	\$45	\$1.85
175/70SR13	\$43	\$1.88
185/70SR13	\$44	\$1.83
185/70SR14	\$46	\$1.94
195/70SR14	\$48	\$2.14

BATTERIES

The "Maintenance FREE" Battery



(High Cranking Output in Coldest of Weather)

- Removable top strip allows addition of water
 - Lead/Calcium plates produce greater cranking amperage
 - Lead/Calcium batteries less susceptible to self-discharge
 - Low resistance intercell connection increase cranking power
- We have Batteries to fit Honda-VW Garden tractors.

Save \$5 off above Batteries
Good with coupon only

HEET 2/99^c
Limit 4

BRAKE SERVICE



Your Choice

\$49⁹⁵

Semi-Metallic Pads extra
DRUM BRAKE

FRONT DISC BRAKE

- Install New Pads
- Turn 2 Rotors
- Respack Front Bearings
- Inspect Calipers
- Check Brake Fluid Level

- Install Shoes Front or Rear
- Rebuild Wheel Cylinder
- Turn Drums
- Install New Holddown Springs
- Adjust
- Bleed System
- Road Test



ALL TERRAIN TIRES

Steel belted radial, raised letters
P235/75R15

\$79⁹⁵ + 3.33
Blomished

RADIALS AVAILABLE

10-15 Lt **68.00**

11-15 Lt **74.00**

Plus F.E.T.

OIL, LUBE & FILTER

\$10⁹⁵

imported slightly higher

- Includes: Spin on filter • 5 qts. 10W30 PennZoil • Lube chassis parts with zerks

EXPIRES 11-30-83.

WINTERIZE RADIATOR SERVICE



\$19⁹⁵

- including new coolant - antifreeze
- Drain Radiator • Power Flush • Install Flush Tee • Install up to 8 quarts of antifreeze coolant • Pressure check system

EXPIRES 11-30-83.

Capitol Tire

More Than a Tire Store



2400 "O" St.
474-1525

1150 No. 48th St.
467-3561

48th & Van Dorn
483-2285

13th & South St.
477-3741