

Five spikers named to team

Five Nebraska volleyball players were named to the 1983 all-Big Eight conference team this week, highlighted by the third straight selection of junior Cathy Noth and senior Erin Dean.

Noth and Dean joined sophomore Sharon Kramer on the first team, which included Dianne Doles of Iowa State, Sharon Olmstead of Missouri and Dianne Berg of Missouri.



Photo courtesy of UNL Sports Information

Karen Dahlgren

Setter Mary Buysse and middle-blocker Karen Dahlgren were voted to the second team, with Kansas State's Sharon Ridley and Cathy Sittenauer, Lori Erickson of Kansas and Dina Herzog of Missouri.

Noth was the leading vote getter among the conference coaches for the first time. The 5-9 junior from Bettendorf, Iowa, is second in the conference in hitting percentage (.386) and fourth in kills per game (3.1).

Dean, an outside hitter from Kansas City is also averaging 3.1 kills per game, while Kramer is fifth in hitting percentage (.292).

Dahlgren leads the conference in hitting percentage with a .392 mark. In addition to being named to the conference all-Academic team last week, Dahlgren was also named player of the week for her performances against Iowa State and Kansas last week. Dahlgren is a redshirt freshman from Bertrand.

Nebraska, 22-3, is a heavy favorite to win the Big Eight Tournament in Ames, Iowa, Saturday. The Huskers will play the winner of the Iowa State-Kansas State game at 11:30 a.m. Saturday at Beyer Hall on the Iowa State campus. The Huskers are ranked eighth and ninth in the two national volleyball polls this week.

Save Money And Ride Together

 BUS

 CARPOOL

Place a personal in the Daily Nebraskan

MAKE PLANS! CHANGE PLANS! BUT DON'T MISS IT!

Factory Direct
Spectacular

JUST FOR YOU!
JUST IN TIME
FOR CHRISTMAS
GIVING FROM
A.T. THOMAS!

**11 HOURS OF SAVINGS
TOMORROW 10AM-9PM!**

A.T. Thomas buys diamonds direct from the cutter. Jewelry direct from the manufacturer and that means **YOU SAVE!**

J. & J. ZAJDMAN, INC.
DIAMOND MANUFACTURERS
ANYTOWN - NEW YORK

Dear A.T.:
Per our recent conversation, we are sending you your half-million-dollar order. Due to your consistent high volume purchases, prices will be adjusted as quoted. Shipment will arrive, guaranteed, in time for your big sale. Good Luck and thanks for your valued business.
Val Braverman

NEBRASKA HAS NEVER BEFORE SEEN A SALE LIKE THIS! SO BUY NOW FOR CHRISTMAS WITH TOTAL CONFIDENCE!

- LOWEST PRICE GUARANTEED OR YOUR MONEY BACK!
- 30 DAY MONEY-BACK GUARANTEE!
- \$10 HOLDS ANY ITEM UNTIL CHRISTMAS!

THE A.T. THOMAS DOWNTOWN ATRIUM STORE WILL BE CLOSED FRIDAY DURING THIS SPECTACULAR SALE!

SHOP EAST PARK PLAZA STORE ONLY!

Spectacular Value
14k Gold Serpentine 16" Chain \$9.99
Reg. 37.95
ALL CHAINS 30-40% OFF

Spectacular Savings

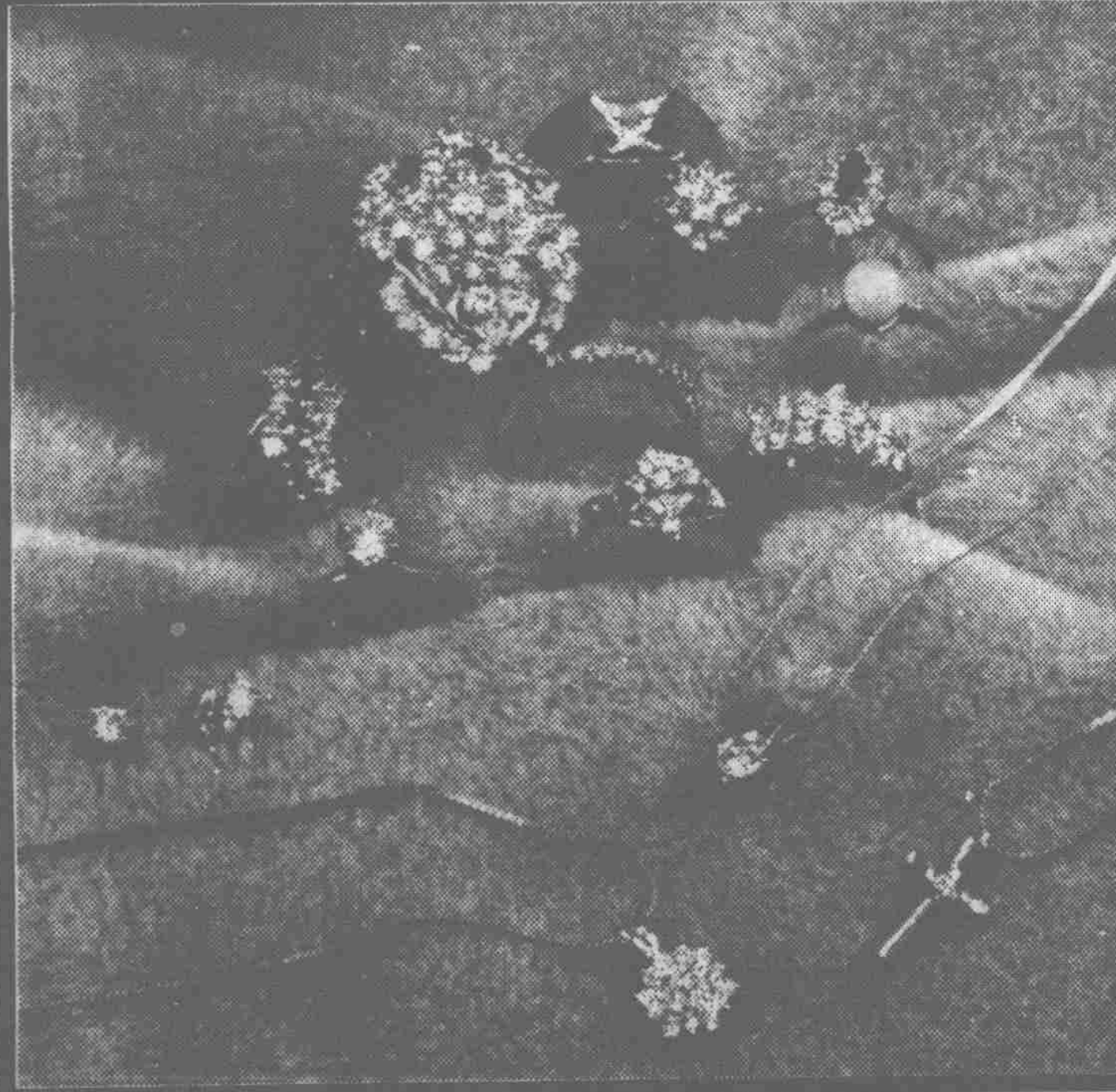
- Pearl Pendant with one diamond on 14k gold chain. (Reg. 89.95)
- Pearl Ring with 2 diamonds (Reg. 89.95)
- 14k Gold Cross with diamond and chain (Reg. 119.95)

YOUR CHOICE \$59.95

Spectacular Savings On Diamond Solitaires

1/5 ct. (Reg. \$395) **\$199**
1/3 ct. (Reg. \$750) **\$395**
1/2 ct. (Reg. \$1195) **\$795**

Spectacular Choice
Men's Diamond or Stone Ring
Your Choice \$99



Spectacular Savings on Diamond Earrings

	Reg.	Now
.10tw	\$180	\$79
.15tw	\$225	\$105
.20tw	\$300	\$159
.30tw	\$495	\$229
.50tw	\$895	\$495

Spectacular Savings on Diamond Pendants

	Reg.	Now
.02tw	\$59	\$39
.05tw	\$99	\$79
.10tw	\$159	\$99
.15tw	\$199	\$139
.20tw	\$289	\$219
.25tw	\$475	\$319
.30tw	\$675	\$399
.50tw	\$1295	\$695

Spectacular Savings on All Ladies Fashion and Dinner Rings
from **\$195**
to **\$2995**

THIS PAGE CONTAINS JUST A FEW EXAMPLES OF THE QUALITY, SALE-PRICED JEWELRY YOU'LL FIND ON DISPLAY DURING THIS SPECTACULAR EVENT!

A.T. Thomas Jewelers

EAST PARK PLAZA ONLY — 66th & 'O'

467-5402