

st Speedway
27th Street

Wellness Week '83



ALCOHOL DEMONSTRATION to demonstrate the effects of drinking. Individuals (who are pictured from UNL) to participate in a course and skills test while not drinking.

ce Budweiser/D&D Distributors
UNL Campus Police
Godfather's Pizza
Lancaster County Atty. Office

OF CHARGE



Craig Smith
Health Aide Cather 6



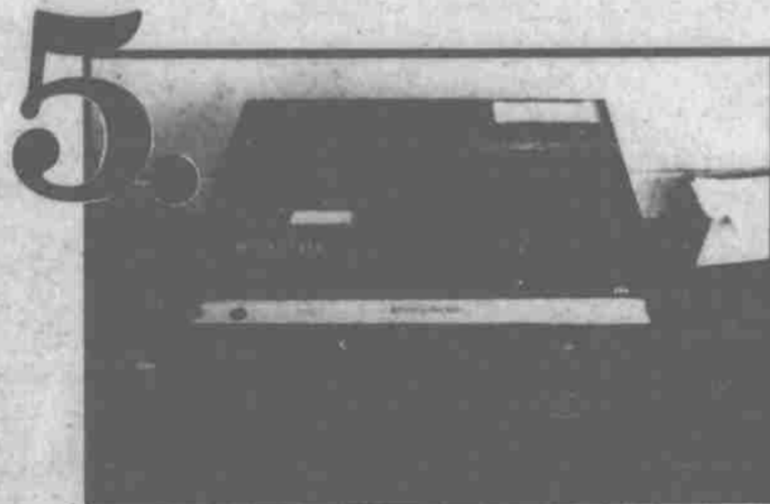
Diane Bannister
Health Aide Burr 3 East



Lisa Butler
Health Aide Cather 11



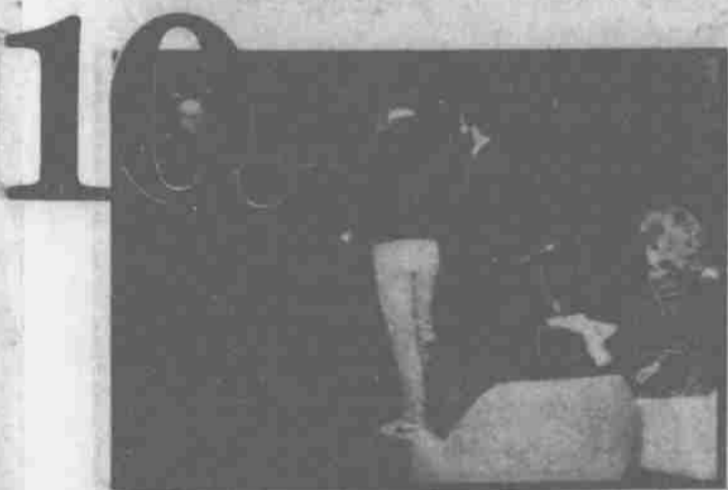
4. The preliminary testing device has three readings: pass, warning and fail. If you pass or get a warning light on the field test, it is up to the officer whether or not to take you to the County Jail for further testing, based on his visual observations. If you fail you are automatically escorted to the City-County Building for an official breath test.



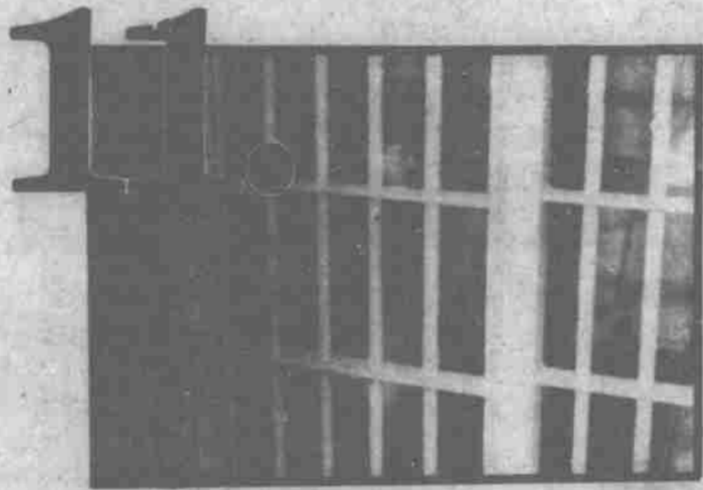
5. The intoxilyzer measures breath alcohol levels. If you refuse to take the intoxilyzer test, you are automatically subject to administrative revocation of your license. If you have more than .10% alcohol in your blood, you may be charged and incarcerated.



6. Most studies show that an average person can consume about one shot of liquor per hour and still pass the breath test, but that rule of thumb varies greatly depending on your weight and body metabolism. A better rule of thumb is not to drive if you drink. Nebraska's getting tough on DWI, and the penalties are stiff and mandatory.



10. Under the new DWI laws, put into effect July 17, 82, the minimal terms of probation you could receive are: 60 days suspension of drivers license with restricted privileges for four months thereafter, \$200 fine, required attendance at alcohol education classes, and to submit a written monthly report as well as reporting in person to the probation officer as directed.



11. If you are given a straight court sentence, the maximum penalty you would receive for DWI 1st offense is: 7 days jail term, \$200 fine, and six months complete suspension of your drivers license. 2nd time offenders receive a mandatory 30 day jail term, \$500 fine, and one year complete suspension. 3rd time offenders receive 3-6 months in jail, \$500 fine, and lifetime suspension of driving privileges.



12. One DWI conviction may stay with you forever. Nebraska is now in a thirty-state compact whereby if you lose your license because of DWI in this state, you lose it in 29 other states. Remember, a taxi cab costs only pennies compared to the emotional and financial costs of a drunken driving charge.
Drunk drivers can kill and often do!

NUMBER TO FOLLOW

PLEASE DRINK IN MODERATION.

This announcement was paid for by Budweiser and D & D Distributing and the Daily Nebraskan

We'd like to thank the University Health Center for their assistance in preparing this ad.