

## Ginn Takes First Place In Two Mile

In a finish that would do credit to any century dash, Nebraska's bespectacled Bobby Ginn sprinted home a half yard ahead of Oklahoma's Bill Lyda in the two mile dual between the Huskers and Sooners, Saturday morning preceding the game in the time of 9:45.3.

It was a race between two great runners, Lyda and Ginn, all the way with Dick Smethers charging into first place several times during the race but falling back to a poor third when the two mile marker was reached.

### Sprint Did It.

All the way around the last lap of the eight lap grind Lyda drove forward and then Ginn closed up the gap. In the last 50 yards both put on a sprint that would do credit to any 220 yard man and Ginn finally pushed himself out in front in the last 15 yards.

As for team totals, the Sooners captured a second, third, fourth and sixth place out of the eight places offered to score 15 points while the Huskers had to be content with first, fifth, seventh and eighth for a total of 21 points.

In a two mile run the team of four men that scores the lowest number of points wins the dual. This makes the second victory for the Oklahoma team this year and the first loss for Nebraska.

### Time Good.

At the mile Smethers was in first place with Lyda, second; Ginn, third. The time was good in the opinion of Nebraska coach, Ed Weir, with the weather right and the track fast.

The way that the eight runners came in: Bob Ginn, Nebraska, first; Bill Lyda, Oklahoma, second; Dick Smethers, Oklahoma, third; Hoyt Burns, Oklahoma, fourth; Paul Johrde, Nebraska, fifth; Howard Pruitt, Oklahoma, sixth; Arden Kersey, Nebraska, seventh; Jim Brogan, Nebraska, eighth. Harlan Culwell of Nebraska and Warren Layman of Oklahoma ran unattached.

## Sport Slants

BY CLINT KANAGA

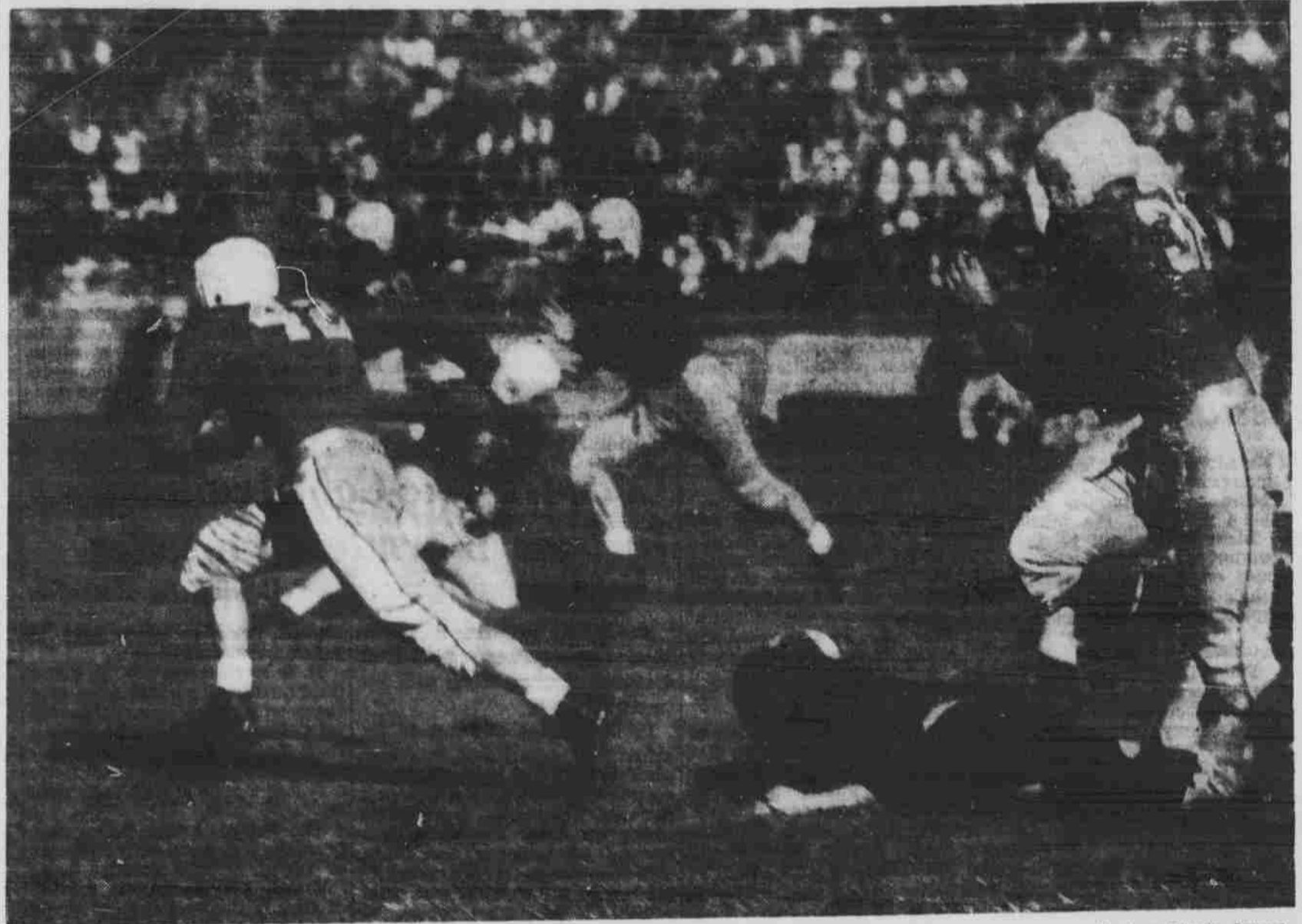
Two years ago this fall, Gwinn Henry took over the task of headmaster for Kansas gridiron outcomes, and never did a coach face a more hopeless job. Any Kansas high school athlete who had ambitions of making good in college football left the Sunflower state for Colorado, California, or Oklahoma. When Gwinn stepped in, he wasn't even blessed with a good holdover crop of lettermen and fresh prospects.

In his first two years, '39 and '40, Henry was able to win only two ball games each fall, and those against small teams. However, this is his third season and the outlook looms brighter. Nine men came up to the varsity from last year's frosh team labeled as future stars and six of them are in the present line-up as sophomores. Kansas doesn't figure to win many games this autumn, but it wouldn't surprise team followers if Henry's boys sprang a few upsets.

### A Team Analysis

The strongest position on the Kansas squad is at end. Henry has four fine flankers in Ulrich, Hagen, Schaaake and Hardman. On

## Bradley Makes 35 Yard Run . . .



Shown on the way to the Kansas 17 yard line at the game yesterday is Dale Bradley, Nebraska tailback, who had just intercepted a pass. This 35 yard run paved the way for the Husker's initial score in the first quarter.

the left wing is "Hub" Ulrich, 193 pound senior, one of the best defensive ends in the valley. Understudying Ulrich is another senior, Ralph Schaaake, while two juniors, Paul Hardman and Bob Hagen, share the right wing duties quite capably.

The top three varsity tackles happen to be sophomores. Jack Tenenbaum (210) and Gene "Chief" Long (204) are starters with Warren Hodges (215) as their first relief man. As a freshman, Hodges was rated as a coming All-American but somehow he hasn't been able to find himself in varsity competition.

The guard situation is fair, although considerably weakened by injuries at the present moment. Of the best four guards, Fluker, Merkel, Kern and Crawford, all but Crawford will graduate in June. In Bob Fluker (207) left guard, Gwinn Henry believes he has one of the conference's best.

The regular center is Bob Githens, a 190 pound sophomore. Githens, against Temple and Washington, proved to be a worthy successor for all-star Don Pierce ('40). The only other pivot man on the squad is another sophomore, Dale Lowery.

In Ralph Miller, senior quarterback, lie all of Kansas' hopes for success this season. Miller has an impressive three year record in passing and punting, in addition to being a good ball carrier. Harlan Altman, sophomore, may take Miller's place as signal caller next fall.

Three of the first four Jayhawk halfbacks will return next season and each one of the trio has great potentialities. In the present starters, sophomores Ray Evans (181) and Ray Niblo (184), Kansas has a pair of future greats. Niblo will take over Miller's passing and kicking assignments next fall while Evans bids fair to be the top ground gainer for K. U. for this season and the next two years.

Don Pollom, a junior who is pressing Niblo for his job, ran 26 yards to score on Temple and will snatch a few headlines before he finishes competition.

Henry depends upon a sophomore redhead and a junior letterman to handle his fullbacking. Don "Red Dog" Ettinger, 195 pound first year man, is colorful and good. Give him another year and he should be the best in the Big Six. No. 2 line smasher is Ed Linquist, tow-headed junior, who ran 18 yards for a touchdown against Washington the only time he got to carry the ball.

If the draft doesn't put an end to college football as "Phog" Allen thinks it will, Gwinn Henry should have one of the finest teams in the Big Six in another year or two. Watch the Jayhawkers of 1942.

Ed. Note—Clint Kanaga is sports editor of the K. U. student paper. He wrote this guest column for the Daily before the game yesterday.

## UN Grad Heads Cincinnati College

Lyle Klotz, who was graduated from the college of pharmacy in 1928, and took his MA in pharmaceutical chemistry here the following year, and in 1935 received his doctor's degree from the University of Florida, has just been made dean of the Cincinnati college of pharmacy.

There will be approximately 1,936,680 cubic feet of space inside the Love Memorial library now under construction.

## Girls' Sport

By Susan Shaw

Kappa Alpha Theta was presented with the Intramural Plaque, Wednesday evening at the WAA mass meeting. This award is given to the team scoring the greatest number of points thruout the entire girls sports year. The Independents received the plaque symbolizing second place. Awards were given to the following for victories in individual sports:

Soccer baseball: Pi Beta Phi, first; Gamma Phi Beta, second. Nebraska ball: Howard Hall, first; Wilson Hall, second. Deck tennis: Gamma Phi Beta, first; Gamma Phi Beta, second.

Bowling: Kappa Alpha Theta, first; Delta Delta Delta, second. Ping pong singles: Independents, first and second. Doubles: Delta Delta Delta first; Sigma Delta Tau second.

Basketball: Independents, first; Delta Delta Delta, second. Swimming: Alpha Xi Delta, first; Delta Gamma, second. Baseball: Whitney Hall, first; Howard Hall, second.

Deck tennis teams must be submitted to the WAA office by Friday. The tournament will begin on Monday.

The soccer baseball tournament

began Wednesday with the Pi Phi in a 24-0 win over the Alpha Chi-Omegas. Delta Gamma came thru to defeat the Kappa Kappa Gamma, 16-1 and Delta Delta Delta won from Love Hall, 9 to 0.

All riding club members planning to attend the supper next Wednesday, Oct. 15, at the WAA cabin turn in 25 cents to any of the officers: Virginia Chambers, 3-3606; Marge Rivett, 2-5332; Peggy Halstead, 2-5332; and Pat Chamberlain, 2-5332. Club members meet on Grant Memorial steps at 8 o'clock on Saturday and 4 on Wednesday and Sunday. Tickets this year will be ten or five rides at 55c an hour including free instruction. Round trip transportation to Pioneers Park will be 10c. The first riding show this year will be Nov. 9.

## Lutheran Student Group Holds Service Today

Lutheran students will assemble for the regular service of worship Sunday morning in parlors Y and Z of the Union at 10:45. Rev. H. Erck will speak on the topic: "Jesus Receiveth Sinners."

Miss Charlotte Filter will accompany the singing, and Miss Adelaide Kloepper will be the soloist. The communion service as arranged in the new hymnal will be used for the first time by the student group. This little church of the "Lutheran Hour" extends a hearty invitation to all who are interested in the gospel of Christ.

There will be 284 windows, 125 rooms, and 200 doors in the new library being built.

Say--You Guys & Gals!  
Climb on the  
TURNPIKE  
Band Wagon  
Tonight

Every SUNDAY  
5 1/2 Hours Dancing starting at 6:30 p. m. at the Turnpike

TONITE  
Charlie  
Great 14 piece Radio & Recording Orchestra

Special from 6:30 to 8:30  
BARGAIN PRICES  
39c Ea. before 8 P. M.  
45c Ea. After 8 P. M.  
Tax Inc.

TEAGARDEN and his  
BARGAIN Buffet Bar  
All you can eat for 25c  
Choice of Assorted SANDWICHES  
2 Salads, Pickles, Chips  
Coffee, or Pop, and Desert

## Do You Have \$2.00?

Buy Your

# '42' CORNHUSKER

Now!!!

\$2.00 Down and \$2.75 by March 15

—OR—

\$4.50 Cash by November 15

PICTURES OF EVERYONE