

pardonable neglect for which the administration is responsible.

"The government now has and must have most emphatically the unstinted and patriotic support of every citizen in the existing exigency. But unquestioning, loyal and patriotic support of the government is one thing; approval of the fatuous course which the administration has followed is quite another. I can not in this message adequately review that course; that I shall do later.

"No intelligent man is deceived by the temporary prosperity due to abnormal conditions, and no one can fail to appreciate the gravity of the problems with which we shall be faced when the war ends. We are alive to the imperative necessity of assuring the bases of honest business. I am in deep sympathy with the effort to improve the conditions of labor; to prevent exploitation; to safeguard the future of the nation by protecting our women and children.

"I believe in workmen's compensation laws; in wise conservation of our national resources, so that they may be protected, developed and used to the utmost public advantage. But underlying every endeavor to promote social justice is the indispensable condition that there shall be a stable foundation for honorable enterprise. American industry must have proper protection if labor is to be safeguarded. We must rescue our instrumentalities of interstate and foreign commerce, our transportation facilities from uncertainty and confusion.

"We must show that we know how to protect the public without destroying or crippling our productive energies. To what agency shall we look for the essential constructive program on which our security and prosperity must depend? It is vain to expect it from the democratic party. That party has not the national outlook. Both its traditions and dominating influences are fatal handicaps.

"I have no sectional word to utter. We are to elect a president of the whole country, not of a part. The south, as well as the north, east and west, will be the gainers from our endeavors. But it is sober truth, as I see it, that as we go forward we must make the republican party the instrument of our advance.

"We want deeds, not words; far-reaching national policies. The progressives have insisted on responsible, not invisible government; on efficient administration. I yield to no one in that demand. I am eager to call the best ability of the country to our aid. For the conduct of the great department the executive is directly responsible, and there is no excuse whatever for the toleration of incompetence in order to satisfy partisan obligations.

"I am deeply appreciative of your indorsement. I find no difference in platform or in aim which precludes the most hearty co-operation and the most complete unity. It is within the party that the liberalizing spirit you invoke can have the widest and most effective influence. I solicit your earnest effort for the common cause."

THE COLONEL AS A CRITIC

"Now, then," snapped the Colonel, gritting his teeth savagely, "have you got down all my statement on Wilson's note yesterday?"

Secretary—"Yes, sir."

"Did you put down that part about our shameful surrender of American rights?"

Secretary—"Yes, sir."

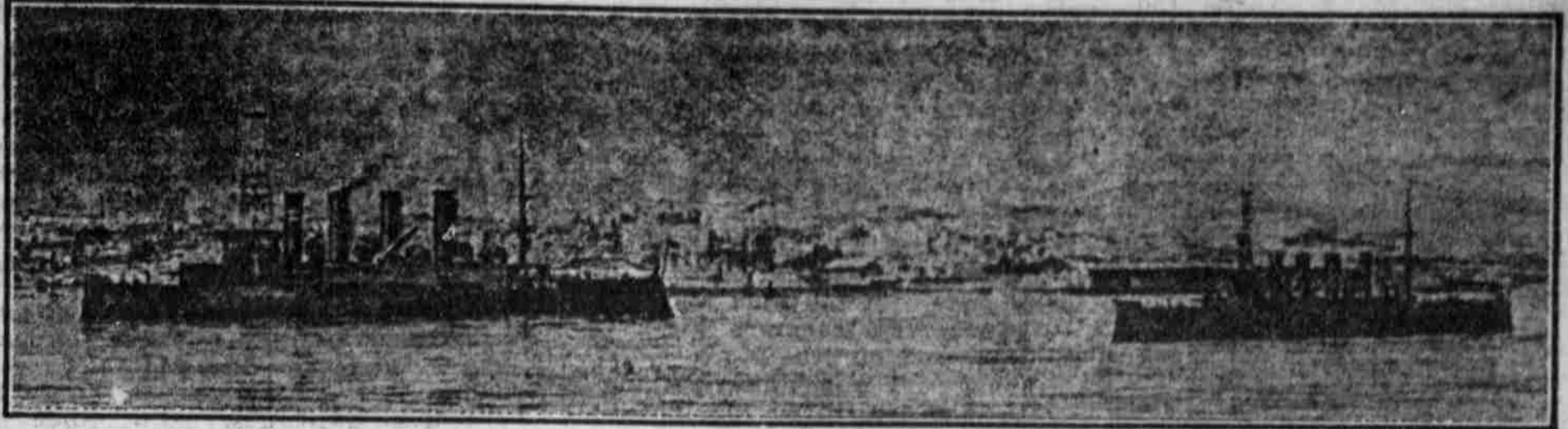
"And the weak, meaningless phrases of the note?"

Secretary—"I have that, sir."

"And the part about the flabby, vacillating policy that dictated it? Bully? Now, bring me a copy of the note and let's see what the man said."
—Columbia State.

SAN DIEGO, CALIFORNIA

The Southern Gateway City of the Pacific Coast



San Diego Bay, "The Harbor of the Sun," contains 22 square miles

It has natural channel waters, deeper and wider than those of Baltimore, Boston, or Philadelphia, and only excelled by four other American harbors in these respects. This is not only a commercial harbor, but is probably the finest and safest yatching harbor in the world. Being perfectly landlocked, rough waters are unknown.

One and one-quarter million dollars have been expended by San Diego to construct the first unit of a modern pier system. San Diego owns its water frontage, and is the first American port of call north of the Panama canal, hence, is nearer all of the Atlantic seaboard by water transportation than any other city on the Pacific Coast, and should become the distributing point for all of the southwest portion of the United States.

The city of San Diego has made a wonderful growth in the past ten years, as shown by the Chamber of Commerce year book, viz:

POPULATION: 1870, 2,300; 1880, 2,637; 1890, 16,156; 1910, 39,578; 1915, 90,000.

THE LAND OF SUNSHINE

The average sunshine in San Diego for a period of 20 years, being from 1894 to 1914, according to the U. S. Government Weather Bureau report was: 3,028 hours per year, or an average of 8 hours and 17 minutes per day for every day in the year for the past 20 years.

THE BEST CLIMATE IN THE UNITED STATES

The U. S. Weather Bureau report covering a period of 27 years, from 1887 to 1914, gives the following:

"TEMPERATURE: Normal annual temperature 61 degrees. The warmest month was August 1891, mean, temperature 72 degrees. The coldest month was January, 1894, mean, temperature 50 degrees."



Come and see both the best place in the United States to live and enjoy life, and the Panama-California International Exposition this year while you can get reduced railroad fare, and see the best features of both of the 1915 Expositions in one, including exhibits from Canada, Russia, France, Spain, Hawaii, Italy, Holland, Switzerland, Brazil, Germany, Persia, India, Turkey and Egypt.

A METROPOLITAN CITY

There is no city in the United States more metropolitan in its residence owners than San Diego. They come from every state in the Union, and from every country on the Globe. This is accounted for by reason of its healthful climate.

VISITORS TO SAN DIEGO have been looking forward to the time when they could retire and spend the balance of their lives in the most pleasant resident section of the United States, and when here they select and buy a residence lot to suit their taste. Years afterward, they, or their children, come and build their home upon it, finding it worth many times more than when it was purchased.

We have platted, graded, sidewalked and placed on the market the beautiful Southlook tract of 150 lots, close in, high and sightly, with unobstructed ocean and mountain view. This tract is located about midway between the business section and the city limits, and only five blocks from the cement paved streets. The prices of lots range from \$800 to \$1200 each, and should double in value within the next few years.

When you come to San Diego, call on us. Our autos are at your disposal, and we will sell you a choice lot, or home already built, at 10 per cent. down and 1 per cent per month. Write us for a map and description.

JEWELL INVESTMENT CO., San Diego, California

212 AMERICAN NATIONAL BANK BUILDING. Phone, Main 2826