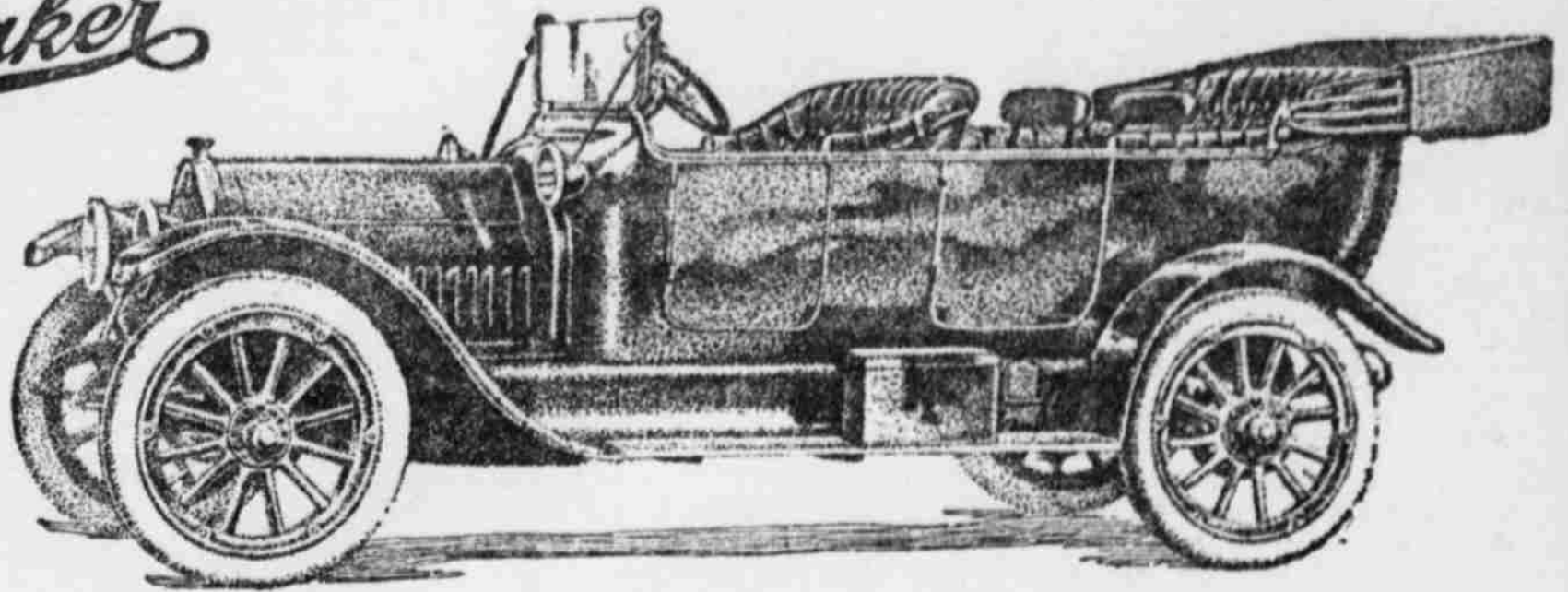


Studebaker

The "SIX"
\$1550



When You Get Acquainted With This "SIX" You Will Surely Want One

A drive in the Studebaker "SIX" will charm and convince you.

If there has ever been confusion in your mind concerning the qualities of a worthy Six, your questions will be fully answered after you have driven this "SIX".

And even if you are aware what some good sixes can do, you will enjoy a greater glow of satisfaction when you drive this car.

As you sit behind the alluringly smooth and responsive motor, no one will need to tell you why you like it. You will know perfectly well.

The instant and full answer to your call for increased speed or power, the sure and perfect response to your control, the quietness, the absence of vibration, the sheer thorough-bred ability of this "SIX" to do all its work without strain or perceptible effort—these things will prove a never-ending delight.

It is as hard adequately to describe this "SIX" as it is always difficult to describe any new and more perfect instrument.

BUT—the Studebaker "SIX" will win you, as sure as ever you sit behind the wheel.

Buy It Because It's a Studebaker

Studebaker "Six" Engineering

The design of a fine six-cylinder car, especially in the motor, calls for exceptional skill and wide experience.

Efficiency at all speeds and the absence of vibration, which are the unique advantages of a worthy Six, can only be attained by the most scientific engineering.

To attain perfect results we use experimental laboratories of large size and full equipment, where every idea built into the Studebaker "SIX" has been proved correct beyond the possibility of error.

We work by knowledge, not by theory.

Every ton of steel we buy is first made according to Studebaker formulas and later rigorously tested to be sure it is up to standard.

Throughout the manufacture, which is carried on entirely in our plants, from forty huge power hammers which forge out over 250 parts for every Studebaker "SIX", to

the last operation, accurate to the one-thousandth of an inch, the "SIX" is built with a scrupulous regard for fine work and the best materials.

Studebaker Standards of Luxury

From the beautifully balanced chassis to the deep upholstery and complete equipment, the "SIX" shows careful attention to appearance and comfort.

It is, of course, electrically lighted and started.

The auxiliary seats, making ample room for six-passengers, are exceedingly comfortable and yet may readily be folded to one side.

The painting is lustrous, requiring twenty-four operations, including many days of drying and aging, before it is finished.

We use Studebaker-Jiffy storm curtains, the most ingenious improvement ever made in automobile curtains.

The Studebaker "SIX" is a car of complete comfort and strikingly handsome appearance.

Call upon our dealer or let him know that you are interested

Specifications

\$1550

Studebaker "SIX"

Long Stroke, 40 H. P. Motor.

Electric Starter
Electric Lights
Electric Horn
34 x 4-inch tires
Detachable, Demountable Rims
Extra Rim
Tire Holders
Speedometer
Three-quarter Elliptic Rear Springs
Full-floating Rear Axle
Silk Mohair Top and Cover
Studebaker-Jiffy Curtains
Clear-vision, Ventilating, Rain-vision
Windshield
Tools and Special Tool Box

(Price, Complete, f. o. b. Detroit)
(Add Freight to Point of Delivery)

\$885 Studebaker "25"

\$1290 Studebaker "35"

STUDEBAKER, Detroit