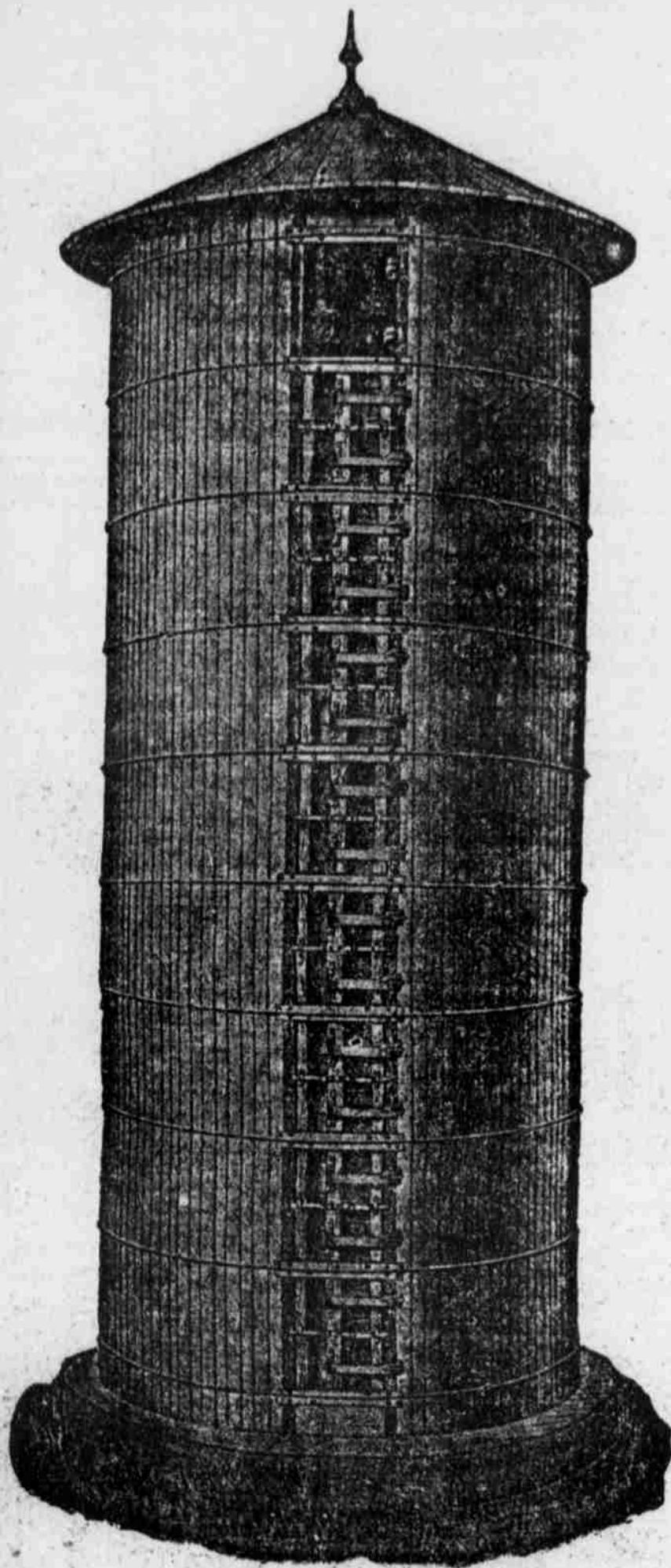


HINGE DOOR SILO

QUALITY---STRENGTH---DURABILITY



THE HINGE-DOOR SILO

Licensed under Harder Patent No. 627732

MADE OF BEST WASHINGTON FIR—the wood least affected by moisture and exposure. Made **ONLY** in one-piece staves, absolutely preventing bulging, and saving more than half the time required to erect the ordinary silo. The anchoring system is the best to be found in any silo and makes the silo as firm as a rock.

Felt gaskets that make our silo door absolutely air-tight are placed not on the frame—but on the door itself! Consequently they cannot be torn off by pitchforks or other tools when handling silage.

The lock is so simple that all you need to do is to turn one lever, and your door is locked tight and fast.

The Hinge-Door Silo is the cheapest to erect, has the longest life, and keeps your silage in better condition the year around than any other silo made.

Fill this out and send to us and we will mail to you free of charge our Silo Book and Literature. (Commoner)

Name

P. O.

State

Of course you need a Silo—there's no question about that. Neither is there any question but that the Hinge-Door Silo is the BEST.

The Hinge-Door is the greatest improvement that has been made since the invention of the Silo. The continuous hinged door makes a perfect ladder. The doors are always in place. It's the easiest Silo to open—doors simply swing inward, where they are out of the way.

No Freezing of Silage in Winter! Careless farm hands CAN'T take door out. No one can possibly be too lazy to close them. They're so simple to operate.

A Silo door, to be secure, should weigh from 30 to 50 pounds. How would you like to lift this with one hand on a blustery winter morning, while hanging to a so-called ladder about 20 to 40 feet above the ground?

With our Hinge-Door, all you do is raise the lever, push back the door, and you are at your silage!

The "door-ladder" is perfect, both in construction and in practicability. It's not a make-shift. Each door is equipped with eleven malleable iron castings. The two hinges form the rung of the ladder, strong enough to hold a ton! And this step is provided every 15 inches.

But we can't tell you even a FAIR part of our story in this space. Write today for our free booklet that gives all the facts.

We can PROVE to you that it takes LESS time to erect a Hinge Door Silo than any other on the market.

READ THIS TESTIMONY

Tobias, Nebraska, February 5, 1912.—Will say to anyone whom it may concern that I am very much obliged to the NEBRASKA SILO COMPANY for selling me a HINGE-DOOR SILO.—Henry Bartels.

Ord, Nebraska, February 13, 1912.—I am very much pleased with the Hinge-Door Silo I purchased of you last year. It has come up in every way to my expectation and is all you claim for it. It has kept my ensilage in perfect condition and there is not a particle of waste and no mouldy silage, but it is good clear through to the very edge. When I first saw your silo I was impressed with it owing to its convenient door and splendid quality of wood. I think the Hinge-Door Silo has the best and most convenient door I have ever seen on a silo. The ladder is easy to climb and cannot be beat. I have found the Nebraska Silo Company in every way reliable and accommodating in business matters.—W. M. Gray.

Republican, Nebr., January 24, 1912.—I can say I am perfectly satisfied with my Silo, and believe it to be all you represent it to be. I think the Hinge-Door a decided improvement over any other door on the market, and the hoops are of the very best quality. Some of the hoops on other makes of Silos here in my neighborhood gave way. But neither my neighbor, Gould, nor I have had any trouble with ours.—A. D. Moran.

Central City, Nebraska, February 24, 1912.—The Hinge-Door Silo that we bought from you last Fall has surely fulfilled all our expectations and we are highly pleased with it. We got it up in good shape and were much pleased with the quality of wood in the staves. As we have had a lot of experience with other makes of Silos, and especially as to door-frames, I was anxious to find out how we would like the Hinge-Door. We have always been more or less troubled in getting hired help to put doors back and keep the silo closed, in order to prevent freezing, but find that with the Hinge-Door the boys take pleasure in closing them, as they are easily opened and closed. We have two silos here, and there was a difference in the amount that froze around the outside during the cold weather this winter amounting to over one foot. While our other silo froze in 12 to 14 inches, the Nebraska Silo, with its tight roof and tight closed doors, did not at any time freeze so it could not be thrown down with a silage fork.—Badger & Frost, Holstein Breeders.

FREE BOOK Send at once for our free illustrated book, telling all about silos in general and particularly the Hinge-Door Silo. We have, without question, the only silo you will want to buy after you've seen the evidence.

JUST SEND THIS COUPON. Mail the coupon today, before you forget about it. It means Dollars to you! Write at once!

OUR EXHIBIT at the State Fair will be located same as last year—directly in front of the cattle barn. We offer free silage to any Stock Exhibitor at the Fair. Come and See Us.

Nebraska Silo Company

HOME OFFICE, LINCOLN, NEBRASKA

Missouri and Southern Iowa: Bellows Bros., Maryville, Mo.; Kansas and Oklahoma, Continental Creamery Co., Topeka, Kans.; Minnesota Office, 2707 Girard Ave., Minneapolis.

