

# Investigate the Irrigated Lands of La Lomita at Mission, Texas

In the Lower Rio Grande Valley of the Gulf Coast Country

If you are looking for irrigated land, where large crops and big profits are a practical certainty, where the growing season extends the entire twelve months of the year, come to Mission, Texas, and investigate for yourself the La Lomita Irrigated Semi-Tropical Lands, while the prices are within your reach.

Irrigated lands in other less favorable sections of the United States are selling from \$500 to \$1,000 per acre, because of the profitable crops they will produce. When it is taken into consideration that every month of the year is a farming month at Mission, you can form some idea of the future value of these lands, which can be purchased now at a fraction of their real worth.

**ADVANTAGES OF IRRIGATION**

Farmers, fruit growers, truck raisers, all recognize the advantages of irrigated lands over non-irrigated sections, no matter where located, as by irrigation we have no drouth, no rain at the wrong time. It means that all the ground is not wet at the same time, which, while benefiting some crops, injures others. It means that for any crop a farmer wishes to grow, the exact amount of moisture needed at the exact time it is needed is available. It means also that a farmer can rush his crops until they are fully matured, and then shut off the water and allow them to ripen slowly.

An irrigated tract on the La Lomita lands at Mission means diversity of crops, big crops, no crop failures, no replanting due to unfavorable weather, no wet harvest, best quality, farmers' insurance, fertilization of the soil by the silt carried in the waters of the Rio Grande, and it means prosperity and happiness. Five acres, properly cultivated, is enough to insure a good living to a family. Twenty acres is a great abundance, and forty acres make a man a plantation owner.

**EXPERIENCE NOT NECESSARY**

It is not necessary that a man be experienced to make a successful irrigation farmer. All that is required is good judgment properly applied—the same as you would apply it on your eastern or northern farm, for there you sometimes get moisture when you don't need it, while the irrigation farmer takes it only as he needs it. The supreme advantage of a tract at Mission is that you are certain that you can grow the crop, and the climate makes it possible to grow a variety of crops and get them in shape for the markets, which can not be done in any country where the rainfall is great.

We simply use irrigation to supplement our average annual rainfall of 30 inches. If it rains we do not irrigate; if we think a little water will help our crops, we turn it on, and that's all there is to it.

**ABUNDANT WATER SUPPLY**

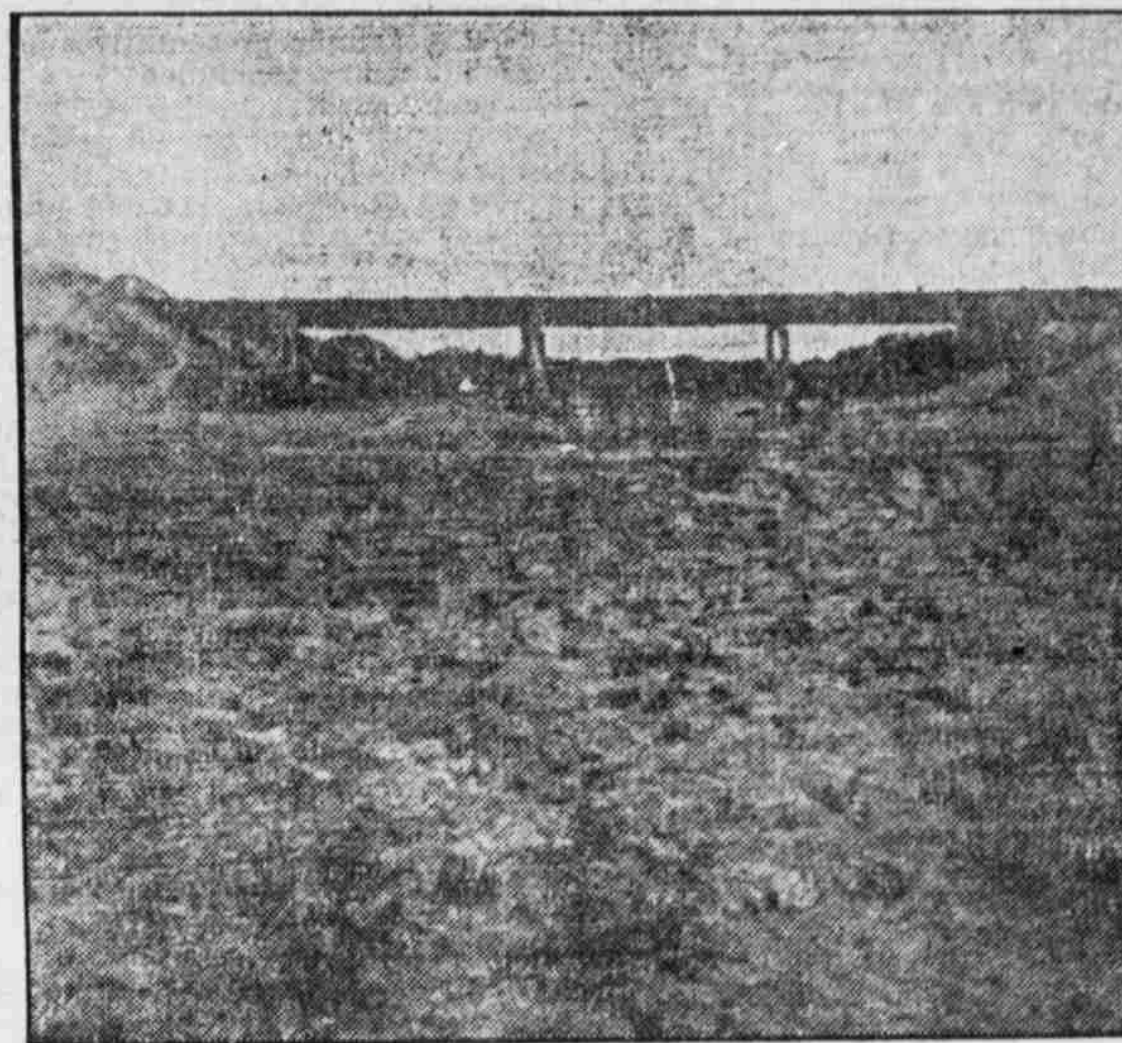
No one who buys lands on the La Lomita Irrigated Tract at Mission need ever have fear of not having enough water or of having too much water. We have carefully prepared to let every farmer have plenty of water just when he needs it for his crops, and we have also taken far-sighted care of the drainage question. The high natural drainage of our lands and the elevation above sea level should appeal to everyone who desires the richest farming lands this country has ever seen, when irrigated properly, and our canal system is as near perfect as it is possible to make it.

**THE CANAL**

The La Lomita canal, which supplies irrigation water from the Rio Grande to the farming lands of Mission, is 15 miles long and has an additional 15



Main Canal of La Lomita Irrigation System



Flume of La Lomita Irrigation System

**The Most Fertile Soil; Abundance of Water for Irrigation; Perfect Natural Drainage; a Climate Unsurpassed; Cheapest Labor in the Country.**

miles of laterals, thus placing plenty of water directly on the farms of everyone who purchases from the fine irrigated lands of our 27,000 acre tract.

As these lands are largely along the river front, the town of Mission being only three miles from the river, the proximity of good irrigation water is greatly in the favor of the truck growers and farmers. The canal system is so situated that it can irrigate all of the land lying between Mission and the Gulf of Mexico in the Rio Grande Valley, were it necessary. The canal has a natural drop of four to five feet to the mile, and the great pump has a capacity of 35,000 gallons per minute. Near the town is a reservoir covering seven and one-half acres, and from this the water will be pumped to the second lift, giving to the highest lands of the bench an abundance of water.

**MODERN PUMPING PLANT**

The pumping plant is modern in every respect and was carefully planned to suit the requirements of farmers on the La Lomita lands. The great stream of water pumped from this modern plant into the flume is steady and continuous so that no trouble is ever experienced in keeping the great canal and the laterals filled with water.

In many places where farm lands are under irrigation, trouble has been experienced on account of the poor drainage arrangements or the entire lack of drainage. On the La Lomita irrigated lands at Mission, we have carefully prepared for drainage, so that danger from too much water or from overflows is done away with. Old resacas or former river beds have been used, in addition to the drainage ditches, and as the land also has the advantage of natural drainage, it is apparent that the drainage problem has been solved satisfactorily at Mission.

**PRODUCES WONDERFUL CROPS**

The staple crops of the valley are from cotton, corn, sugar cane and alfalfa. Returns from these are sure and enormous.

Cotton flourishes well here, from one bale to one and a half bales per acre being the average.

Corn produces from 50 to 75 bushels per acre, and three crops have been matured on the same land in 14 months.

Sugar cane yields 30 to 60 tons per acre for six to ten years without replanting, with ample facilities for milling and marketing.

Alfalfa readily yields a net profit of from \$100 to \$120 per acre, selling for \$15 to \$18 per ton net. From six to nine cuttings per annum is an average harvest.

After the staples, various kinds of truck, fruit and nursery stock pay handsomely in this region.

**FRUITS AND VEGETABLES**

Enormous profits have been realized by the growers of early vegetables for the northern markets.

Oats yield 60 to 75 bushels per acre, and planters have done exceedingly well with crops of clover, broom corn, sorghum, milo, maize, potatoes, cauliflower, snap beans, cucumbers, celery, and in fact every kind of vegetable you can mention. Watermelons and cantaloupes will yield from \$125 to as high as \$200 per acre.

Oranges, plums, apples and grapes do unusually well here. This valley bids fair to be the greatest orange and grape country in the United States, the profits of these fruits being large.

Pineapples, grape fruit, pears, apricots, bananas, strawberries, blackberries, olives and figs are being cultivated with profit.

A farm at Mission offers unlimited opportunities of a happy home and the accumulation of wealth. These lands, which comprise the pick and choice of the Lower Rio Grande Valley, are now on sale. They are best for you to buy because they are irrigated from the silt-laden waters of the Rio Grande river. Unlike most new countries there is an abundance of cheap labor at all times.

The Gulf Coast Country of Texas is a delightful place to live. Winters are mild and sunny, summers pleasantly tempered by Gulf breezes. People are locating here from all sections of the country, and pronounce the climate in every way superior to the famed Southern California, without its dampness.

When you have read this ad, you can make no better decision than to take a trip down this way. This is a proposition that will stand close inspection. Buy a homeseeker's ticket on the first or third Tuesday of each month and go down for yourself. The expense is small. The price of the land is reasonable now, and next year it will be more. Our proposition unexcelled in the state of Texas, and we solicit your investigation and correspondence.

**CONWAY & HOIT, MISSION, HIDALGO COUNTY, TEXAS**