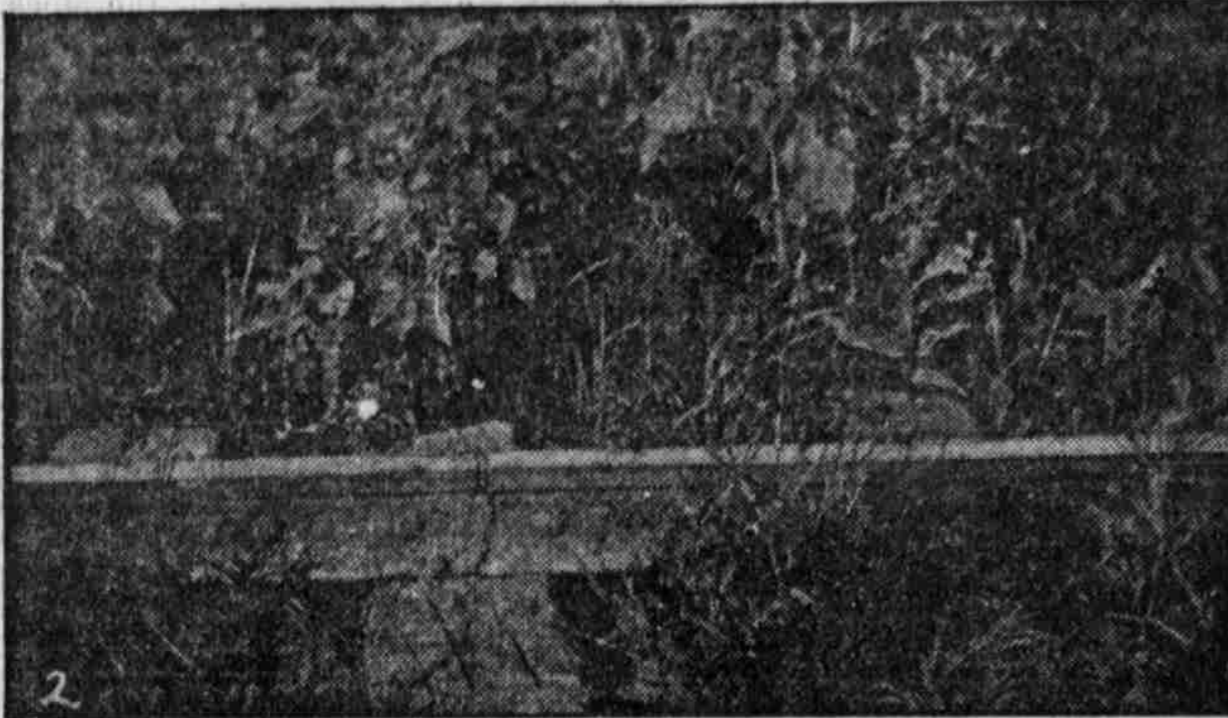
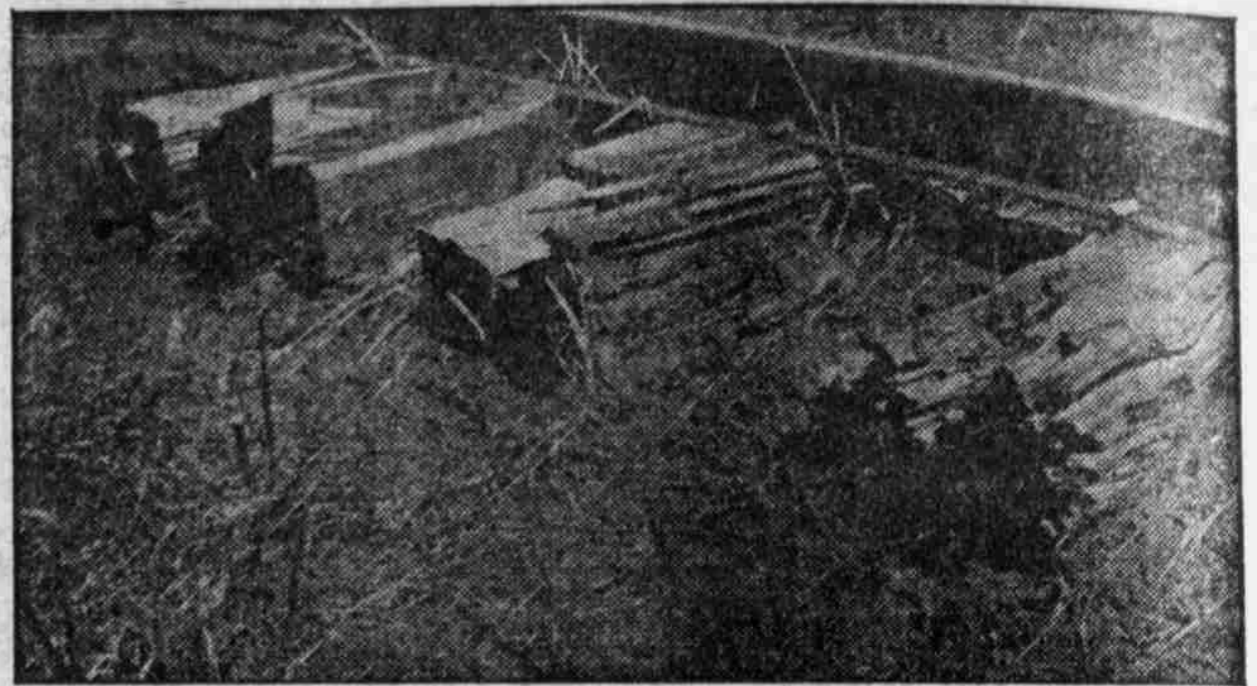


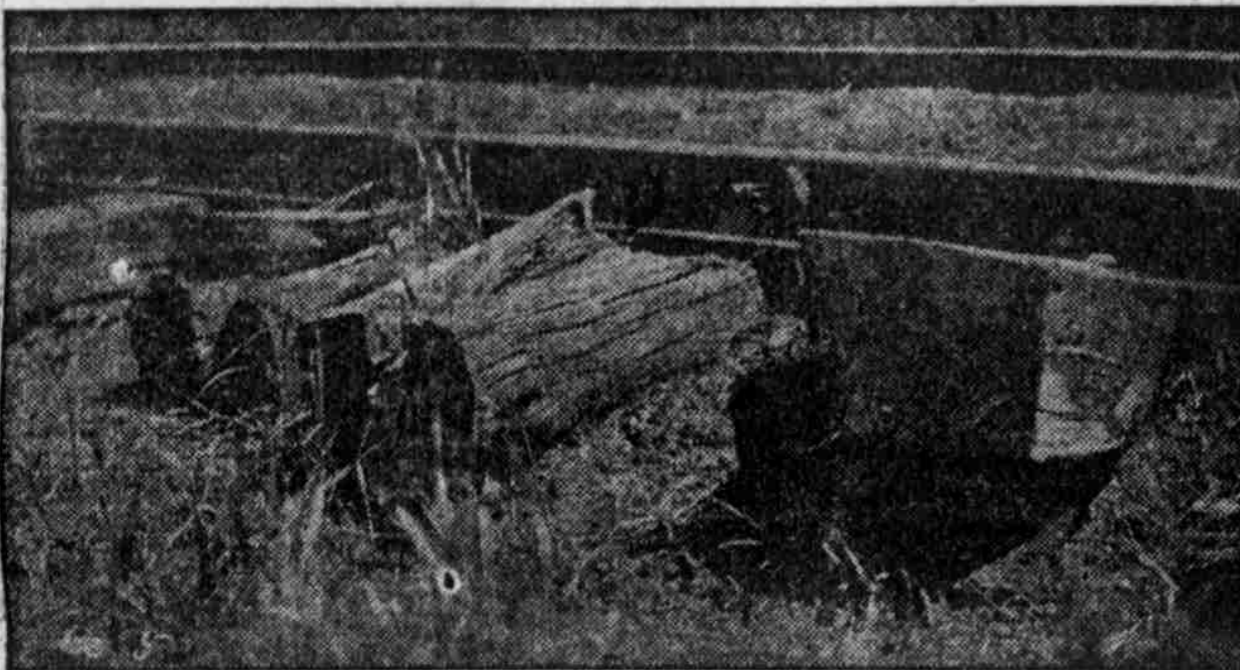
## HOW MODERN GREED DISREGARDS SAFETY OF LIFE AND LIMB



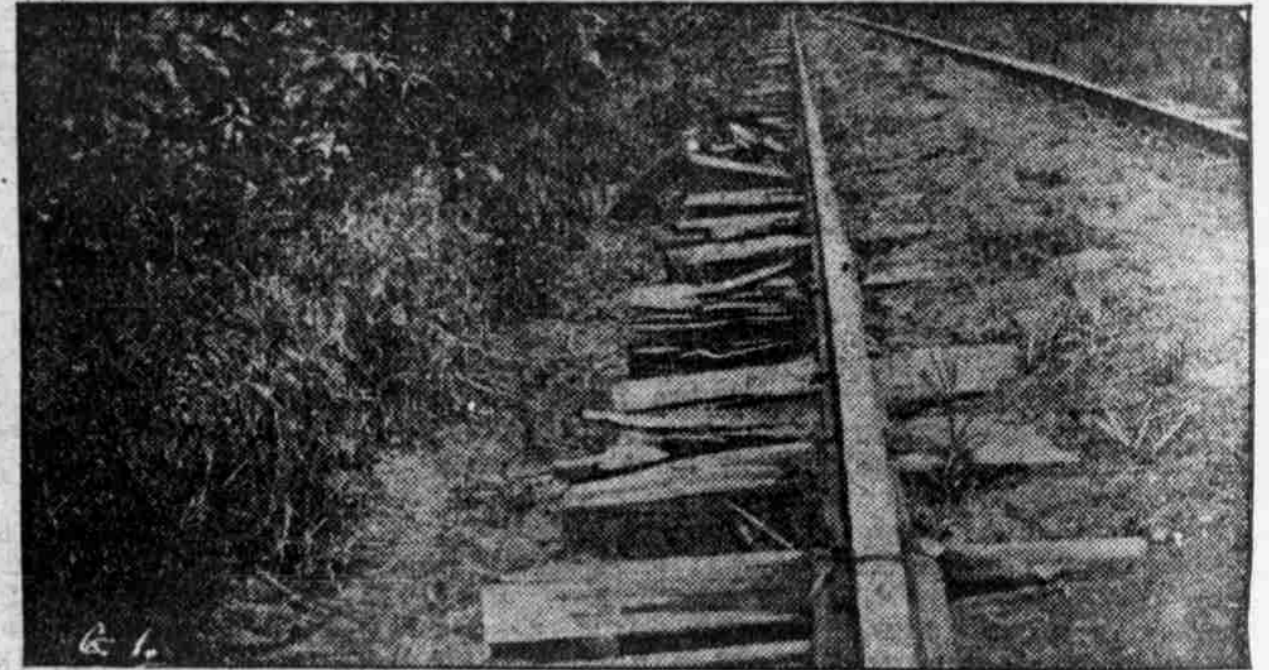
Showing Broken Angle Bars and Rotten Ties on Railroad South of Plattsmouth, Neb.



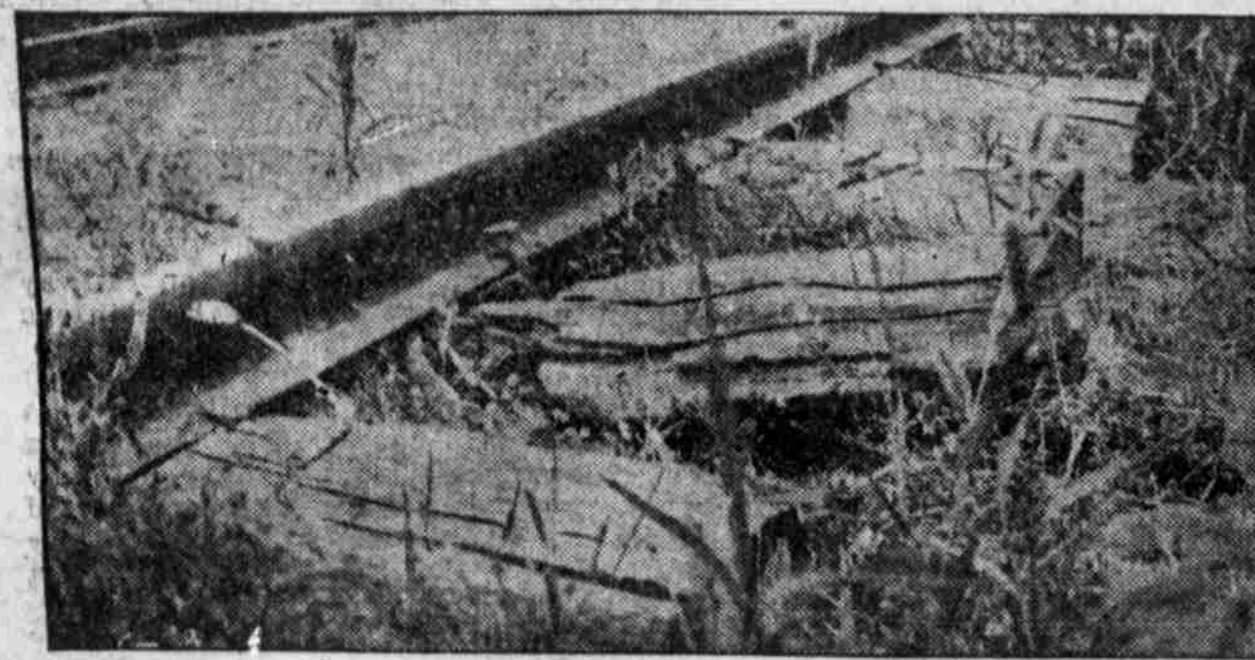
Showing Four Consecutive Rotten Ties on Railroad Between Weeping Water and Union in Nebraska.



Showing Three Consecutive Rotten Ties on Railroad Between Weeping Water and Auburn in Nebraska.



Showing Eight Consecutive Rotten and Broken Ties on Railroad Between Weeping Water and Union in Nebraska.



Showing Broken Tie on Railroad Between Weeping Water and Omaha in Nebraska.



Showing Rotten Ties on Railroad North of Falls City, Nebraska.

Photographs of actual condition existing on a main line of railroad in Nebraska. These photographs have been filed, together with complaint, with the Nebraska State Railroad Commission. The complaint will be found elsewhere in this issue of The Commoner.

## COMPLAINT IN NEBRASKA

On Monday, August 5, Vice President Vurpia filed with the Nebraska state railway commission on behalf of the National Union of Railway Trackmen a complaint against the Missouri Pacific Railway company. Representatives of the union spent considerable time in gathering evidence and taking photographs of existing conditions. Some of these photographs are reproduced in this issue of The Commoner, and speak for themselves. The complaint made to the Nebraska commission follows:

To the Honorable Board of Railroad Commissioners of the State of Nebraska: Your complainant, the National Union of Railway Trackmen, alleges that it is a voluntary association, with headquarters at Fort Scott, Kan., its mem-

bership being limited to men engaged in railway track work in the United States of America. The main purposes of the organization are to secure fair wages, and just treatment for its members, also to secure the safest possible conditions for the operation of railway trains, to the end that life and limb may be made more secure in railway travel.

Your complainant, by its vice president, H. A. Vurpia, complains of the Missouri Pacific Railway company, and alleges:

First—That the said railway company is a corporation organized and existing under and by virtue of the laws of the state of Missouri; that said corporation owns, controls and operates a line of railroad from St. Louis in the state of Missouri through the states of Missouri, Kansas and Nebraska, to the city of Omaha in the said

state of Nebraska. The said corporation also owns, controls and operates a line of railway from the town of Weeping Water, Neb., to the city of Lincoln, Neb. The aforesaid corporation also owns, controls and operates a line of railway from Auburn, in the state of Nebraska to the town of Crete, in said state.

Second.—Your complainant further alleges, that for a number of years the said railway company has not employed on its lines of railway in Nebraska a sufficient number of men to perform the work of keeping its railway tracks in safe condition for the passage of railway trains over said tracks, and that said railway company during the same length of time has not furnished sufficient material with which to make repairs on the tracks of its said railway within this state. Its railway tracks are divided for