

THE COURIER

Published Every Saturday

Entered in the Postoffice at Lincoln as second class matter.

OFFICE, 900-910 P STREET

TELEPHONE } Business Office, 214
 } Editorial Rooms, 90

SUBSCRIPTION RATES:

Per annum, in advance, \$1.00

Single Copy,05

FASHION

From the March Millinery Trade Review.

Spangles in Spring Millinery.—Spangles, or paillettes, were never in more abundant evidence in millinery accessories than they are in those of the new mode. Of tiny size they appear in chains of edging for ruchings and leaves; a little larger they dot the petals of flowers; as relief of net, in bands and crowns, and in some cases reaching the size of a nickel five-cent piece, they form distinguishing covering of hats, while net, hung with closely set, narrow, acutely pointed jet gelatine drops, or spikes of fringe-like effect, divides favor with folds and puffing of tulle and chiffon for the facing of hats. They have come out in jet, silver, steel and the usual metallic effects with new and very beautiful productions of their kind in opalescent and iridescent effects.

Feather Garnitures for Spring and Summer.—Ostrich plumes, as seen in models exhibited in collections brought out in the recent openings, are holding their own, and have indications of continuance in use. Certain of the shapes in the hats, to be effective, make a demand for them as trimming. They are still placed under the brims of the large hats at the left side, but they are laid quite as frequently over the exterior as within the brim and sweep around the right side as often as around the left

side. A white wisp of heron algette, stuck in the edge of the crown, at the left side toward the front, and pointed forward, is a feature in the garnishing of box turbans. Serviceable and ready-to-wear hats of fiber and the straw braids, shown in late displays of the new millinery, were trimmed objectively with quills of the Argus pheasant; and it is said that pigeons and other of the birds of medium large size used in millinery may come into requisition as the season advances.

"Nancy Brown" in Millinery.—An illustration of one method of using very wide ribbon as trimming on a hat is seen in a model from Paris, called the "Nancy Brown." It is of white French chip braid of the Leghorn plating, with the crown very wide and low. The brim, wide and plain, left un-faced, is bent up at the back. Soft satin ribbon, sixteen inches wide, with dotted center in marine blue, and printed floriated bordering, in design of rosebuds, forget-me-nots and small green leaves, laid over the crown, is gathered up at each side under a mat of flowers about the size of the saucer of an after-dinner coffee cup, of a half-blown rosebud set in a mass of velvet forget-me-nots and small green leaves. White tulle draped on the bandeau underneath is encircled by loosely laid liberty satin ribbon in pale rose-pink, a rosette bow formed of the ribbon at each side of the front.

Black Flowers Popular in French Millinery.—Although the season is hardly sufficiently advanced in Paris for spring millinery to be worn, there is nothing else to be seen in the showrooms. For these models, speaking generally, quite light and particularly pastel tints are given the preference, not infrequently, however, mixed with black. Strangely enough this admixture of black often appears in the flowers. There is a great fancy for black cowslips, primroses, laburnum and other flowers, mounted with similar blossoms of a natural tint. Thus a pretty hat in palest blue satin straw, draped loosely about with white tulle, has a wreath of forget-me-nots around the crown. Most of the flowerets are blue, but here and there is a black one. In another example the black is extended to the facing of the brim, this being in black chip, whereas the outside of the hat is in palest pastel pink chip, and there is moreover a narrow pleating of black velvet sewn around

PHYSICIAN TO THE POPE



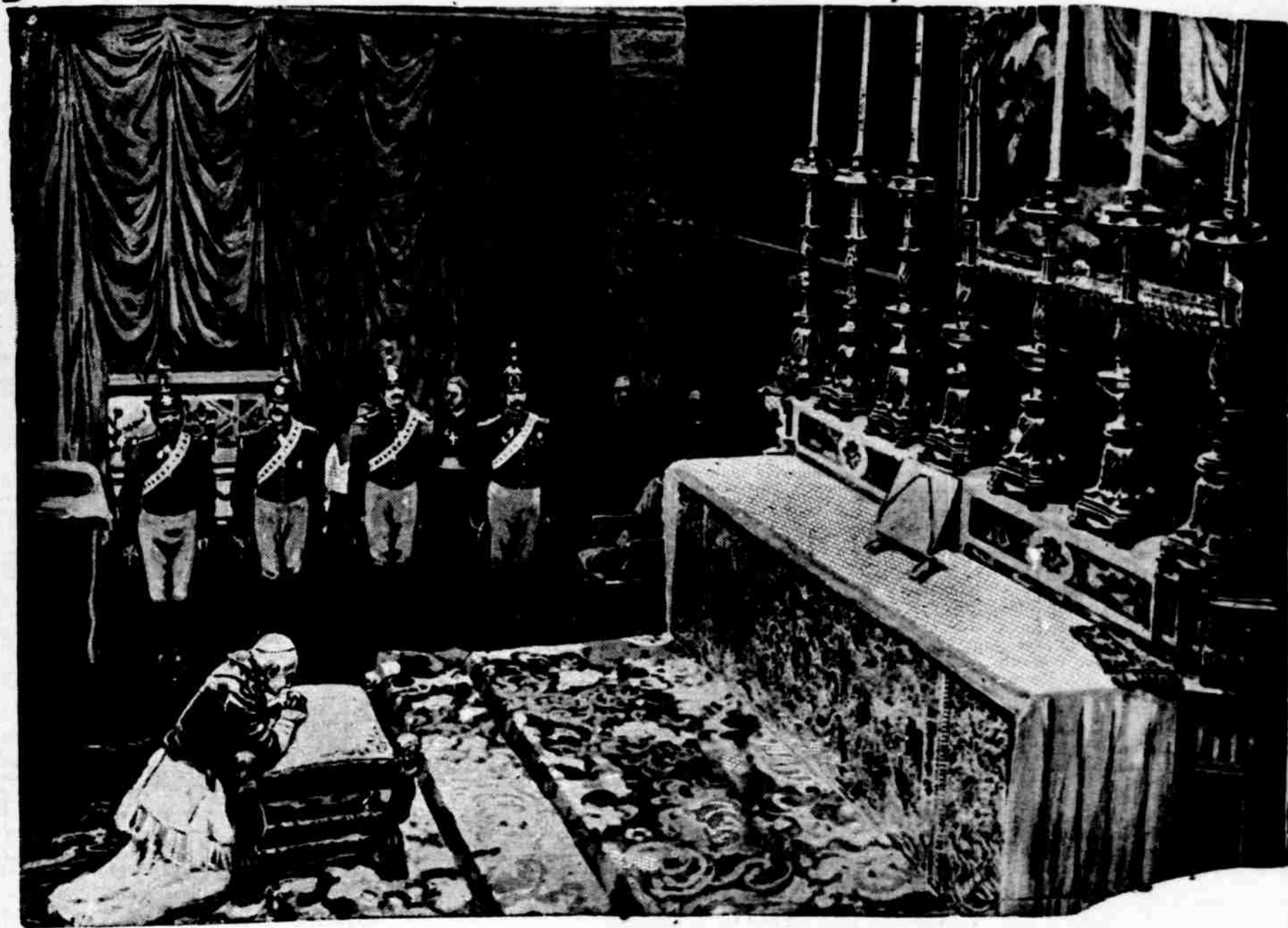
Great responsibilities rest upon the shoulders of Dr. Joseph Lappont, for he is the Pope's private physician and responsible for the physical well-being of the head of the Catholic world. His name is signed to all the official bulletins concerning Leo's health.

the edge of the rolled brim so as to lie on the outer and pink side. The trimming consists of two bunches of primroses attached to opposite sides of the crown. The flowers in one of these bunches are black on the inner sides of the petals and white on the outer side with white stalks, whereas those on the opposite side are all pink. Then again bunches of yellow and of black laburnum with a few green leaves are fast-

ened to the center and also to the back of a plateau hat made of palest silver-gray crinoline braids mounted in pleated ruffles.

The Colors in Spring Millinery.—Bright colors are, however, not by any means left out in the cold. Some milliners continue to favor combinations of deep, bright blue and green in spite of its having been rather overdone last year. The novelties in this line are mostly large

INTERESTING PICTURE OF POPE LEO



This valuable photograph, which is absolutely authentic, shows the aged pope Leo at his devotions in the Sistine Chapel. It is probably the most interesting picture of his Holiness ever taken.