

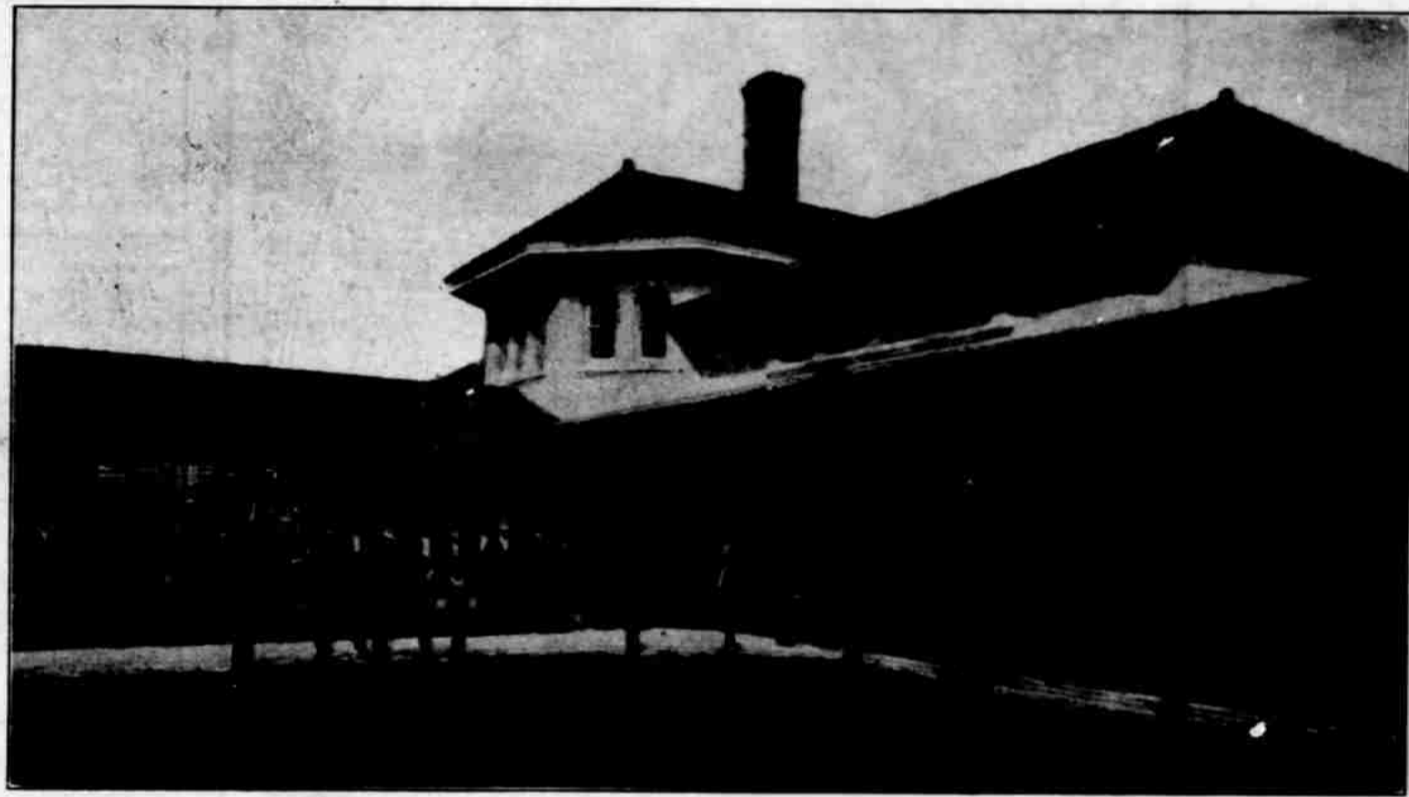
# THE COURIER

VOL. XVIII, NO. XLI

LINCOLN, NEBRASKA, SATURDAY, OCTOBER 18, 1903.

ESTABLISHED IN 1886

## THROUGH THE CAMERA'S EYE



The new passenger station of the Burlington railroad at Hastings, Neb., just completed at a cost of \$75,000. It is one of the best equipped stations on the entire Burlington system. The exterior view is imposing and the architectural effect is correct.



Interior view of the new Hastings passenger station.