

Fashions of the Day.

My Dearest Adelaide: Why are other-wise well-dressed women so careless about their shoes? When you come to think of it, it is really most surprising. Nine women out of ten that you meet in drawing rooms and on the street are badly shod. It is not uncommon to see black dresses with tan shoes and handsome silks and velvets with "barked" and grimy kid. Women who are particular about their gloves seem many times to give no thought to the dressing of the feet. A woman should have at least six or seven pairs of shoes for the street—high and low kid, high and low patent leather, high and low tan—to say nothing of the house shoes and slippers. Shoes should be changed as often as the dress or even oftener.

Tan shoes should never be worn with black dresses. They do very well with blue or colors which do not correspond exactly, but are in shocking taste with black costumes. Patent leather should be worn with silk, satin or velvet, or else a perfectly fresh, French kid shoe. With tailor-made suits and with cloth the kid boot is always correct. The tan shoe is a freedom allowed for comfort, but unless carefully confined to the proper suit is decidedly untidy and plebeian. Tan shoes, unless matching costumes, should go with wash goods, checks, summer wools, warm-day "get-ups," shirt waists and negligé.

The popular low shoe is laced over the instep, and gaining in popularity is lacing instead of buttons for the high shoe. In slippers the one strap is the favorite, with moderately low or moderately high French heel.

By the way, the "French heel" is no more condemned to oblivion. With the coming of the closer fitting skirts and the train, which necessitates the lifting of skirts, shoes are taking a new lease of beauty. A woman's foot, these spring days, will be observed, and it has already become a noticeable fact that the dear creatures have been taking advantage of

NEXT TO THE COOK'S HEART

And the most important factor in a well regulated kitchen is the range. It must be one that the drafts are easy and accessible to handle, so that the oven can be tempered to any degree necessary for baking. One of the most particular elements of making palatable, healthy baked food consists in keeping the oven at the proper heat. It must also be economical of fuel, in size and form it must be symmetrical; material and workmanship the most perfect. It should have beautiful and artistic designs in Nickel Trimmings.

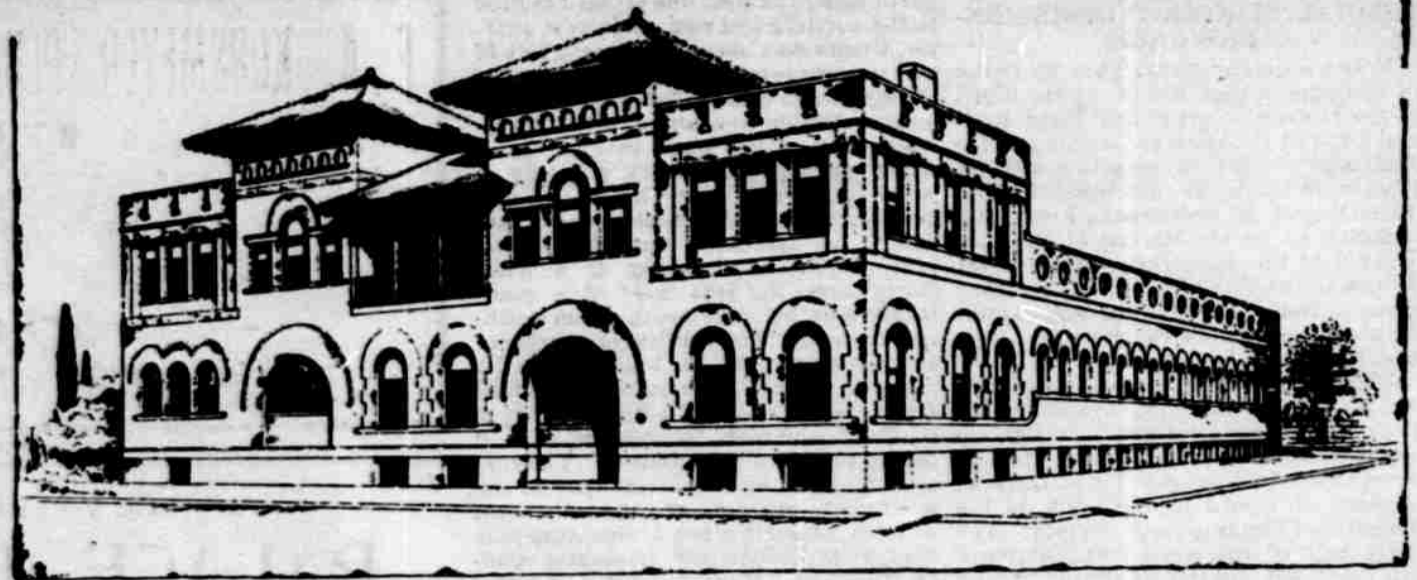
All these essential features we have in the New Lincoln Steel Range. This is our reason for calling it the



It is acknowledged by all competitors to be the handsomest steel range made. In the future we will tell you about a model kitchen and a few receipts for dainty dishes.

We guarantee them in every particular. If your dealer does not keep them write to us.

BUCKSTAFF BROS. Mfg. Co., Makers. Lincoln, Neb



Sulpho-Saline Sanitarium, Cor. 14th and M

All Kinds of Baths—Scientific Masseurs. A Deep Sea Pool, 50x142 feet.

Shaving—Hairdressing.

DRS. EVERETT, Managing Physicians.

past fashions and are careless; this is why, my dear, that I waded into the "sloppiness" of some women, in the beginning of my letter, about their pedal dressing. You would really be amazed to see how comparatively few neatly-booted feminine feet there are on Broadway and Fifth avenue.

Gloves for spring are about the same in styles as we have had for the winter. Pearl tinted with heavy black stitching are again among the new importations, and so are the lemon, flesh tint, cream and white. Pale tints with narrow stitching, black and self-color, are bringing a higher price, which means, I suppose, that they are a little later in style. These are in the four-button gloves. The mousquetaires are in evidence among the new gloves, which are just from Paris, and that means the elbow sleeve will be seen again on summer dresses—no French woman will go without it.

These sunshiny days are bringing out spring jackets. The ripple basque has entirely disappeared, and all the spring jackets have the basque fitting smoothly at the back and over the hips. Backs are fitted closely to the figure and fronts are square, single or double-breasted, without darts, excepting in the under-arm seam.

Veils are a special feature of the springy days, and are sometimes three yards in length. These are adjusted loosely to the hat, with ends coming forward and tied in a fluffy bow under the chin, with the ends forming a vest effect in the opened blouse. Sometimes the veil is all white with chiffon and lace-trimmed ends, or it is black with white trimming, and again, all black. Of course, all veils are not in this style, but this is a favorite, and gives the soft drapery effect so much in vogue.

By the way, speaking of the "opened blouse," it is amusing to see the utter disregard of whether or no a blouse is made to be opened or not—most winter blouses have been made not to wear open. But they are open now, and the lapel of one side of the blouse is entirely different from the other. One side will be trimmed with fur, with a facing showing, and the other will be without trimming, with the lining and hooks or fastenings in full view. The new blouses, of course, are made with broad lapels turned back and open to the belt in "V" shape. The Medici collar still holds its own, and forms the same frame work for the face and neck trimming.

White is used a great deal for facing lapels and lining the Medici collar.

White plumes have burst forth anew. They are on all kinds of hats—I mean the long, sweeping plume. One plume will reach all around the pompadour roll of the hair and the end will fall on the shoulder. These hats are mostly velvet toques, which set back on the head with

no trimming but the one long plume. Edith and Reta have ordered spring "tailor-mades," and both of them ordered blue—blue that is blue. It is a shade that is almost as strong as national blue. One being a blonde and the other a brunette, you would not suppose the color to be becoming to both, but it is, and is an exquisite shade. Edith ordered a jacket and skirt made without braiding or trimming. The seams are overlapped, and there is to the jacket a blue velvet collar. Reta's suit is to be heavily braided with black, and is made with a military sort of waist, which will show her pretty figure and graceful curves to advantage.

It is my opinion that braiding will be too popular as a trimming and will soon become "common." It is already seen on nearly everything. Where braiding is not seen tucks are. Silks and satins are tucked in every conceivable way as much as are the thinner materials.

TESNA.

NEW TOURIST CAR LINE.

Weekly Personally Conducted Excursions to Portland, Ore., via Burlington Route.

On February 17 and every Thursday thereafter at 6:10 p. m. Pullman tourist sleepers in charge of our own excursion conductor are scheduled to leave Lincoln for Portland, via Denver, Leadville, Salt Lake City, Ogden and Oregon Short Line, passing through the grandest scenery of the Rockies and stopping several hours at Salt Lake City to allow a visit at many points of interest there.

Berths, tickets and full information may be obtained at B. & M. depot or city ticket office, corner Tenth and O.

GEO. W. BONNELL, C. P. & T. A.

AMERICAN EXCHANGE NATIONAL BANK

LINCOLN, Neb.

S. H. BURNHAM, A. J. SAWYER, President. Vice-President. D. G. WING, Cashier.

CAPITAL \$250,000.

DIRECTORS: A. J. Sawyer, S. H. Burnham, E. Finney, J. A. Lancaster, Lewis Gregory, N. Z. Snell, G. M. Lambertson, D. G. Wing, S. W. Burnham.

"Why do you object to my opening the mail?" inquired the new editor petulantly. "Because," responded the publisher, smilingly pocketing the rake-off of two-cent stamps, "because I wish to see which of the contributions bear the stamp of Genius!"

IT IS THE TRAIN TO TAKE

The Burlington's "Vestibuled Flyer," which leaves Lincoln every evening at 6:10 p. m. and arrives in Denver the next morning at 7:15.

It carries thro' sleepers, chair and dining cars, and offers a service that is unexcelled by any road running into Denver—remember this when purchasing your tickets and START RIGHT.

B. & M. depot cor. 7th and P sts. City Ticket office cor. 10th and O sts.

G. W. BONNELL, G. P. & T. A.

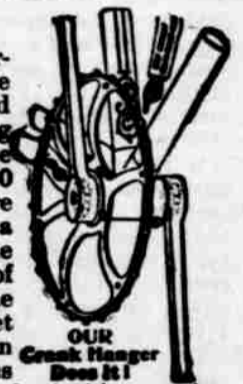
CYCLE PHOTOGRAPHS
ATHLETIC PHOTOGRAPHS
PHOTOGRAPHS OF BABIES
PHOTOGRAPHS OF GROUPS
EXTERIOR VIEWS

Clements

THE PHOTOGRAPHER
129 South Eleventh Street.

Our Crank Hanger Does It

The Racycle Narrow Tread is the easiest running and longest wearing wheel made, because there is from 20 to 30 per cent. less pressure on the bearings of a wheel having the balls in the hubs of the cranks and the chain and sprocket wheel rolling between the bearings, thus saving leverage. We back this assertion with



\$1,000 IN CASH.

If you do not believe it examine the Racycle, either theoretically or practically, figure on it, and if you can disprove our assertion we will GIVE YOU \$1,000 IN CASH.

Here is your chance, send for catalogue.

MIAMI CYCLE & MFG CO.,

MIDDLETOWN, OHIO

A. L. GIRARD & Co., Agent, Lincoln.

Mrs. Boxe Houlder—What prevented your husband from attending the last performance of "Tannhauser," Mrs. Soaque?

Mrs. Soaque (icily)—Annheuser!