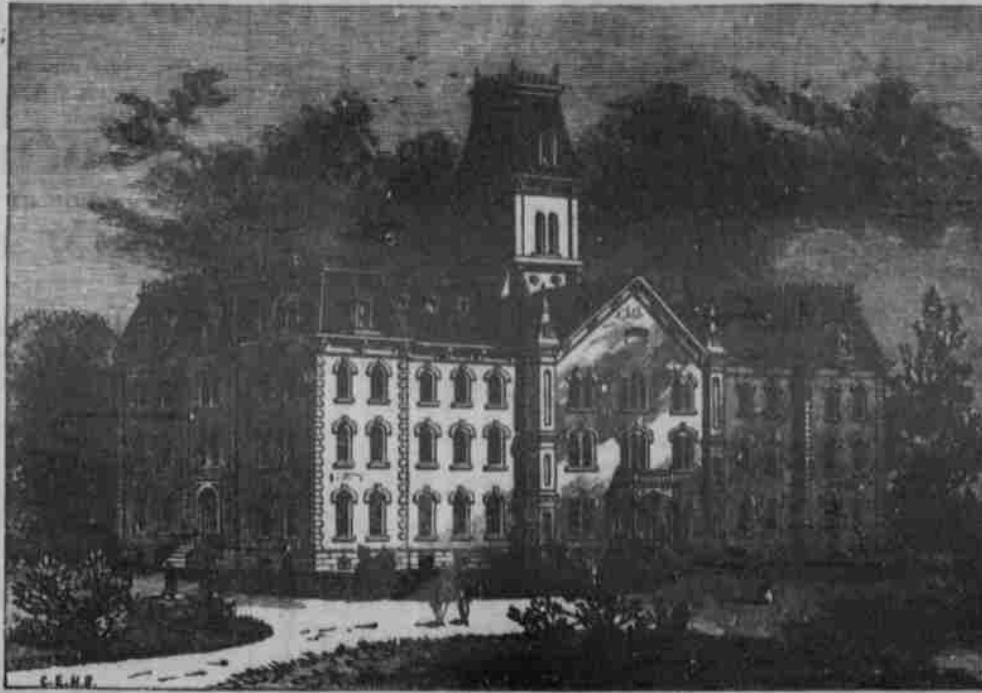


# UNIVERSITY OF NEBRASKA.



**Five Complete Courses, Open to Ladies and Gentlemen. Tuition Free.  
No Charge for Incidentals.**

**FACULTY:**

H. E. Hitchcock, A. M., Ph. D., Dean, and Professor of Mathematics.  
Samuel Aughey, A. M., Ph. D., Professor of Natural Sciences.  
George McMillan, A. M., Professor of Greek Language and Literature.  
George E. Howard, A. M., Professor of History.  
G. E. Barber, A. M., Professor of Latin Language and Literature.  
H. H. Nicholson, A. M., Professor of Physics and Chemistry.  
L. A. Sherman, A. M., Professor of English Literature.  
F. W. Grube, A. M., Professor of Modern Languages.  
S. R. Thompson, A. M., Professor of Didactics and Agriculture.

**FACULTY:**

Harvey Culbertson, M. S., Professor of Horticulture.  
Charles N. Little, A. B., Tutor in Mathematics and Civil Eng.  
Miss Ellen Smith, A. M., Principal Latin School.  
Miss M. G. Hitchcock, Tutor in Latin School.  
Adelaide Dearborn, Teacher of Elocution.  
Conservatory of Music.—S. B. Hohmann, Director.  
Painting and Drawing, Miss Ada Seaman.  
Ensign Richard Townley, U. S. N., Military Science and Tactics.

ESTABLISHED 1869.

**ED. A. CHURCH & CO.**

Dealers and Jobbers in

**CURTAINS**

AND

*Window Shades,*

And everything pertaining to

**INTERNAL DECORATION**

CHURCH'S BLOCK, O ST.

**HOVEY & PECK,**

—Wholesale and Retail dealers in—

**Stoves, Hardware, Tinware,  
Woodenware, &c.**

First class hardware store. A specialty made of pocket knives. 106 North 10th street.

**Leighton & Brown**

Make a Specialty of

**School Books**

—AND—

*Fine Stationery.*

**A. M. DAVIS,**

1224 O Street,

Wholesale and Retail Dealer in

*—Carpeting—*

Oil-Cloths, Mattings, Rugs,

Mats, Wall Paper,

Window Shades, Lace Curtains, Damask, &c

**The Best Place To Buy**

ALL KINDS OF

**GROCERIES**

Garden and Grass  
Seeds, is

**V. E. FARMER,**

140 South 11th. 1300 E St.

**Conservatory of Music,**

STATE UNIVERSITY,

Furnishes superior instruction in

**Piano Forte,**

**Organ, Singing,**

**Harmony, Etc.**

Either in private or classes. Tuition moderate. For further particulars, send for circular or see the Director, S. B. Hohmann.