

Commercial Hotel.
(Douglas House Enlarged.)
J. J. IMHOFF, - - - Proprietor.
HENRY WEAVER, MANAGER.
Late of Gault House, Chicago.
Lincoln, Neb.

J. MONTEITH,
MANUFACTURER AND DEALER IN
BOOTS AND SHOES,
Made from the best material and warranted. Repairing neatly done on short notice.
North side Square. LINCOLN, NEB.

Bowker, Kennard & Co.,
BANKERS,
LINCOLN, - - - NEBRASKA.
YOUNG & CHASE.

PHOTOGRAPHERS,
O Street Between 10th and 11th
LINCOLN, NEBRASKA.

Steam Bakery.
Students and others desiring Bread, Crackers, Pies, etc., will find it to their interest to call at the Steam Bakery, North side of Public Square—Next to the Atwood House.

Tuttle & Harwood,
ATTORNEYS AT LAW,
LINCOLN, - - - NEBRASKA.

WILLIAM DEVEREAUX,
Manufacturer of Fine Cigars,
AND DEALER IN ALL OF

Chewing and Smoking Tobacco,
And Smokers Articles of all Descriptions,
O Street, Three Doors East of Tenth,
LINCOLN, NEBRASKA.

McCLURE BROS.,

Have on hand
A COMPLETE ASSORTMENT OF

GENTS'

FURNISHING GOODS,

HATS AND CAPS,
CORNER OF O AND 11TH STREETS,
LINCOLN, - - - NEBRASKA.

C. H. Van Fossen,
AGENT FOR THE
PEACOCK FORT SCOTT
COAL,
HARD, and soft
WOOD.
LINCOLN, - - - NEBRASKA.

AMASA COBB, Pres't. J. F. SUDDUTH, Cashier.
W. P. PHILLIPS, Vice-President.

First National Bank
OF LINCOLN.

Authorized Capital,
HALF MILLION DOLLARS.

DIRECTORS,
AMASA COBB. W. P. PHILLIPS.
J. F. SUDDUTH. J. G. MILLER.
W. P. FARWELL.

JOHN L. McCONNELL,
Dealer in

Staple & Fancy Dry Goods

AND NOTIONS,

No. 12, Briggs' block, South side O Street,

LINCOLN, - - - NEBRASKA.

CENTRAL MARKET.

Bohanan Bro's,
—DEALERS IN—
Meats, Sausages, Game and Provisions
of all Kinds.
South Side Market Space,
LINCOLN, NEBRASKA

H. W. HARDY,
Offers special inducements to
STUDENTS! TEACHERS! PREACHERS!
AT HIS BRICK
FURNITURE STORE,
No. 11, 10th Street,
Lincoln, Nebraska.

Recommended by the State Superintendent
of Nebraska.

The Standard.

The Largest. The Cheapest. The Best.

Worcester's Quarto
Dictionary.

The authority of the U. S. SENATE and HOUSE OF REPRESENTATIVES, and of EVERETT, SUMNER, QUINCY, RIVES, WINTHROP, MARSH, MANN, HILLARD, HOLMES, LONGFELLOW, ALEXANDER, BYRANT, IRVING, HENRY, FELTON, and the leading authors of Europe and America.
The "MEDAL OF MERIT," was awarded at the Vienna Exposition to Worcester.
Retail price \$10; liberal discount made to school districts, teachers ministers and clubs. Correspondence solicited.

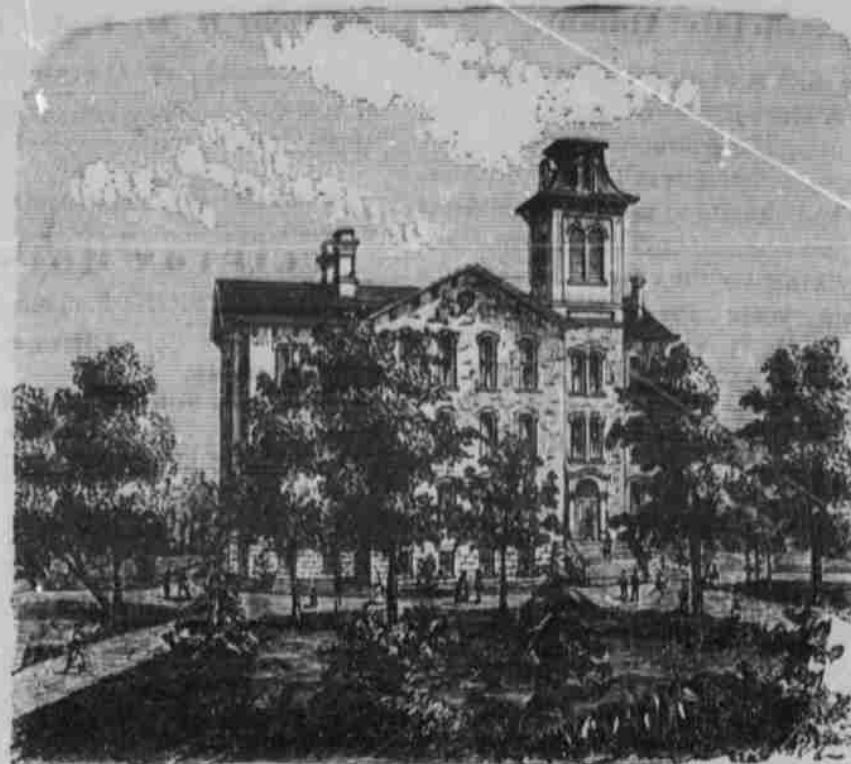
Brewer & Tileston

ALSO PUBLISH

HILLARD'S READERS,
FRANKLIN'S READERS,
WORCESTER'S DICTIONARIES,
WORCESTER'S SPELLING BOOKS,
SEAVEY'S U. S. HISTORY,

All of which are recommended by the State Superintendent of Nebraska for use in all the common schools of the State, and in use in a large majority. Single copies of any of the above for examination (except Quarto Dictionary) will be sent by mail to any teacher sending one half the retail price. Address

JOHN M. TAGGART,
Palmyra, Nebraska.



NORMAL SCHOOL, PERU, NEMAHA COUNTY, NEBRASKA.

UNIVERSITY OF NEBRASKA,
LINCOLN, NEBRASKA.

The University of the State was opened for the second year September 12, 1873, under favorable conditions, and thus far has been prosperous and successful.

PROFESSORS.

The Faculty, at present, is composed of seven Professors, skilled in their several departments of instruction.

ADMISSION.

Students of both sexes are admitted to the University on passing examination in the common English branches, if entering the Latin School; or in studies of advanced classes, if claiming an advanced standing.

TUITION.

Tuition in all departments is FREE. There is an entrance fee of \$5. Books are furnished at cost.

APPARATUS, Etc.

The Institution is liberally supplied with Apparatus, Cabinet, Library, and all needful facilities for illustrating the subjects taught. The Philosophical and Chemical Apparatus is especially large and valuable.

AGRICULTURAL COLLEGE.

The Agricultural College is now open, and furnishes a full course of instruction running through four years, or a partial course in practical agriculture, requiring one year. The completion of the full course entitles the student to a degree.

BOARDING.

Boarding is obtained at reasonable rates in private families, or by renting rooms the expense may be reduced to \$2 or \$3 per week. At present boarding in families is from \$4 to \$5 per week.

CALENDAR.

The Fall Term began Thursday, September 12. The Winter Term will begin Thursday, January 2, 1874.

Correspondence is solicited by the Chancellor from those intending to enter College.

The health of our State and the facilities offered in the University, should be strong inducements for those seeking health and advantages for education.

For circulars and other information respecting the University, address

A. R. BENTON,
Chancellor University of Neb.,
LINCOLN, NEB.

C. B. PARKER,

—WHOLESALE AND RETAIL DEALERS IN—

Hardware, Nails, Stoves and Tinware,

ALSO

TABLE AND POCKET CUTLERY, AGRICULTURAL IMPLEMENTS AND MECHANICAL TOOLS.

O street, between 9th and 10th.

LINCOLN, NEBRASKA.

CLINE'S

PHOTOGRAPH ROOMS,

One door south of Post Office,

LINCOLN, NEBRASKA.

NEBRASKA
State Normal School.

FACULTY.

T. J. MORGAN, Principal,
Mental and Moral Science; School Economy.

JAMES BELLANGER,
Mathematics.

KATE S. DICERMAN,
Instrumental Music; Gymnastics.

ALBERT NICHOLS,
Principal of Preparatory School.

ELIZA C. MORGAN, Preceptress,
Rhetoric; English Literature.

W. E. WILSON,
Natural Science; Greek.

M. HELEN BURT,
Methods; Latin.

ELLEN E. JOHNSTON,
Principal of Model School.

CLENDEN.

Board Meets Quarterly--December, March, June, September.

First Term begins Thursday, Sept. 4, 1873; Ends Wednesday, Jan. 1874. Second Term begins Thursday, Feb. 4, 1874; Ends Tuesday, June 23, 1874.

Students can enter at any time. The best time is at the beginning of the year; or, if that is not practicable, then either November 13, February 4, or April 15.

Tuition free. Number of students enrolled since September over three hundred. For catalogue address

T. J. MORGAN, Principal.

O. W. WEBSTER & BRO,

DEALERS IN

BOOTS & SHOES,

LEATHER & FINDINGS,

No. 3 East O Street,

Lincoln Neb.

Have just received a complete stock of goods direct from Eastern factories.

Students.

Ministers and

Others

Will find it to their advantage to call and examine before purchasing elsewhere, as a liberal deduction is always offered to such individuals.

REPAIRING DONE TO ORDER.