

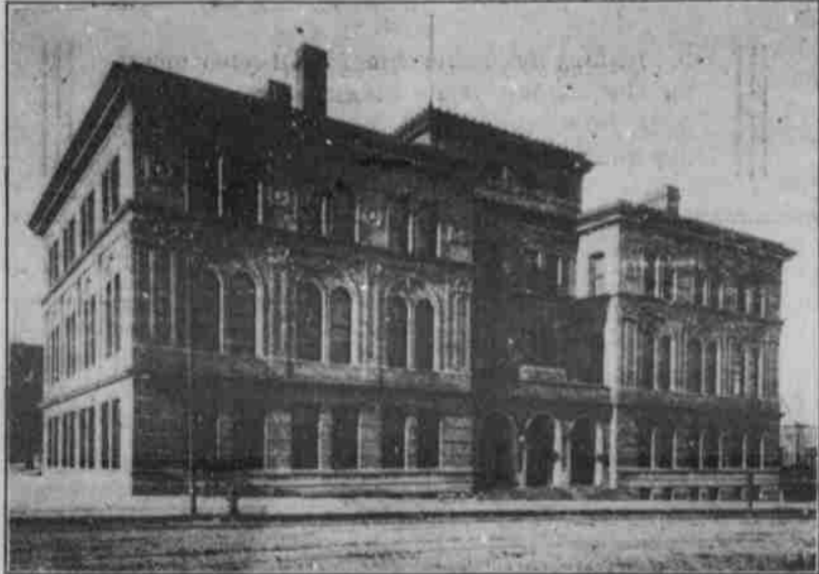
### Going to Take That Wheel Along This Summer?

Of Course You Are!

Better come around and let us put a crate on it. The cost will be but a trifle and you will be saved a whole lot of trouble.

**The Lincoln Novelty Works**  
331 South Eleventh Street

**CREIGHTON MEDICAL COLLEGE**  
Corner Fourteenth and Davenport Streets, Omaha.



The course in this school consists of four terms of eight months each. The first two years are devoted chiefly to laboratory and class room work; the last two to the more practical part of medicine, consisting almost entirely of clinics and clinical lectures. For catalogue and further information write to D. C. BRYANT, Sec., McCague Building, Omaha, Neb.

## 30 Men's SILK NECKTIES 30

We closed out a lot of 150 dozen Men's Japanese Wash Silk String and Club House Ties from a New York manufacturer. They were all he had and he was anxious to dispose of them even if he didn't make any money, and at the price we bought them he didn't make very much. They are made from genuine Japanese Wash Silk, come in a great variety of patterns, light and dark stripes, checks, plaids, Foulards and Persian effects. Just the thing for any kind of a collar, cool and dressy. Their real value is about 15c each, but we can and will offer them on Monday and while they last

**Per Dozen 25c Each 30**

We'll fill mail orders for these and strictly recommend that you write at once, mentioning the Nebraskan-Hesperian.

*A. Herpolsheimer Co*

LINCOLN, NEBRASKA

## The University of Minnesota

College of Medicine  
and Surgery

The thirteenth Annual Course of Lectures will commence on the 19th day of September, 1900, and will continue eight and one-half months. The course is graded and covers a period of four years. Medical Hall, the Laboratory of Medical Science, the Laboratory of Medical Chemistry, and the Laboratory of Anatomy are situated upon the Campus. The clinical opportunities afforded by the hospitals and dispensaries of Minneapolis and St. Paul are at the command of the College. For outdoor clinical service a new clinical building has been built in a central location.

For information address,  
**DR. PARKS RITCHIE,**  
DEAN UNIVERSITY OF MINNESOTA,  
MINNEAPOLIS, MINN.

## RUSH MEDICAL COLLEGE

IN AFFILIATION WITH  
THE UNIVERSITY OF CHICAGO  
ORGANIZED 1837

The academic year of Rush Medical College is divided into four quarters corresponding with those recognized with the University of Chicago, beginning respectively the first of July, first of October, first of January, and first of April, each continuing for twelve weeks. A recess of one week occurs between the end of each quarter and the beginning of the next following.

The general course of instruction requires four years of study in residence, with a minimum attendance upon three quarters each year. A student may begin his college work upon the first day of any quarter, and may continue in residence for as many successive quarters as he desires. Credit will not be allowed, however, for more than three consecutive quarters. At least forty-five months must elapse between the date of a first matriculation and the date of graduation.

For further information address,  
**RUSH MEDICAL COLLEGE,**  
CHICAGO, ILLINOIS.

You want the finest..



We have it!



# CLARKSON

# LAUNDRY

# COMPANY



330-332-334-336-338-340

**SOUTH ELEVENTH  
STREET.**