

W. F. MASON, President

L. HANSEN, Cashier

TRY IT JUST ONCE

You are always glad to follow the example of wise and prudent men in all things but banking. You have not got a prospersus neighbor who does not carry a bank book. Why don't you? Call today and make a small deposit as a starter. Try it just once and see if you don't step a little higher when you go home to your family. It is much easier to forge to the front with one of our neat little bank books in your pocket. Don't take our word for this but try it, just once.

First National Bank

Loup City, Nebraska.

We Pay 5 per cent on Time Deposits.

T. S. John Auctioneer

LOUP CITY, NEBRASKA

All Auctioneering business attended to promptly. Satisfaction guaranteed. Give me a trial. Phone 7304.

Use Ungles Dry Dip

Can Be Used In All Kinds of Weather.

Easy to use Simply sow it over the stock like grass seed. It works by evaporation and need not be on the animal.



Is the vermin exterminator, disinfectant & cleanser which you have been looking for. Order today.

Immediately stops the loss incurred in feeding stock which are pestered with vermin and itching. Cleanliness means profit. Is cheap, 25 lbs. \$2.50. 50 lbs. \$4.50. 100 lbs \$8.00. All put up in tight wood packages. MILO GILBERT Agent Phone 9611, or purchase at Hayhurst-Galloway's Hardware Store

Compare our Job Work with others a word to the wise is sufficient.

Notice

THE MOVING PICTURE SHOW At the New Opera House Will Run Every Night in The Week Hereafter A 4-Reel Show Every Tuesday, Thursday and Saturday Change of Program

Nothing but the best pictures will be shown here. Everybody is cordially invited to attend.

THOMAS DADDOW

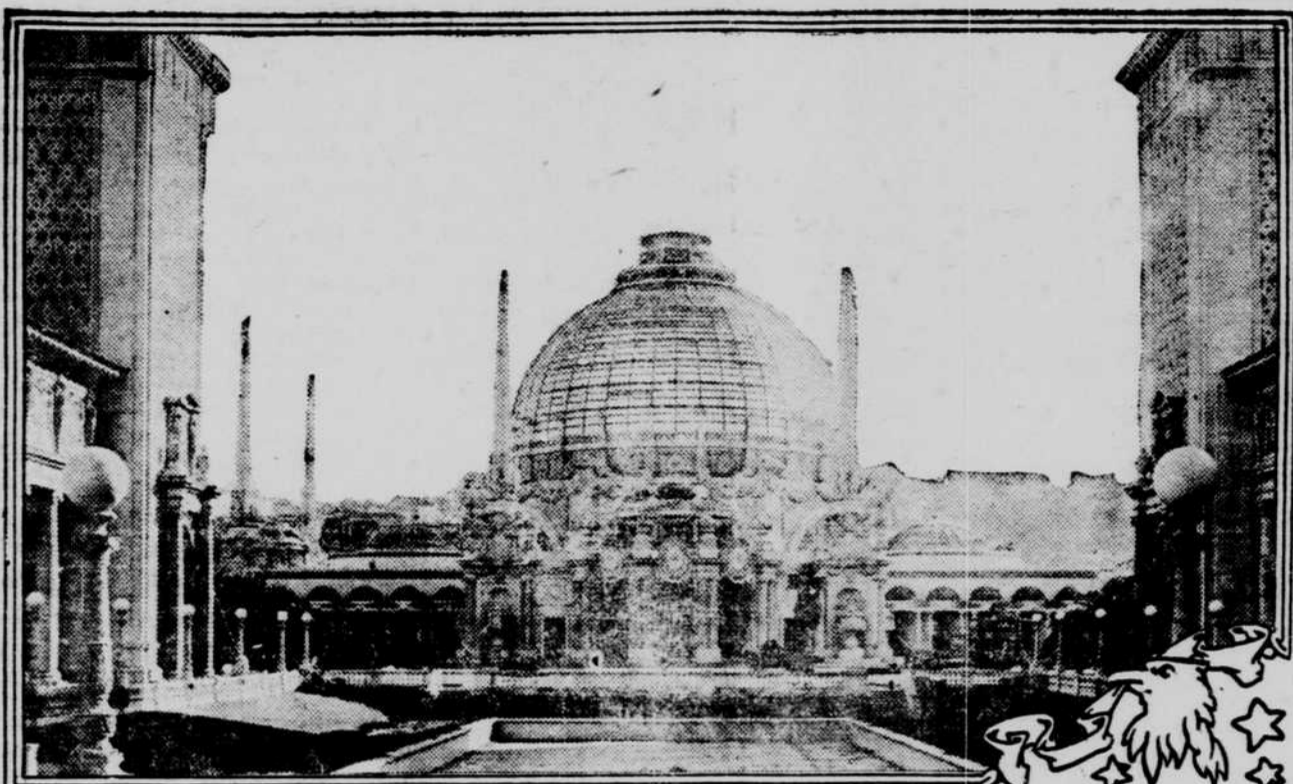
Let the Northwestern visit your home during 1915. You will like it.

Big International Exposition's Amusements Novel and Wonderful

President Wilson Will Visit Panama-Pacific Display of Nations via Panama Canal—Vanderbilt Cup Race and Grand Prix Will Be Held in San Francisco.

By HAMILTON WRIGHT. WONDERFUL and novel amusements, parades and pageants of the oriental countries, auto and yacht races and athletic contests will be observed upon a scale of unexampled magnitude and grandeur at the Panama-Pacific International Exposition. The extensive participation of China, Japan, Siam and Indo Cochin China, when taken in connection with the plans already made and with the interesting oriental population of San Francisco, assures such spectacles as have never before been seen in the occident. Pageants of miles in length set off by wonderful floats and marvelous pyrotechnics will wind through the streets of San Francisco. There will be held throughout the

this event. The famous Salt Lake Mormon choir, the deep toned plaintive singers of Hawaii and even a chorus of fifty Maorian singers will take part in the choral events. At an expenditure of \$1,250,000 the Exposition has constructed a great Auditorium in the civic center of San Francisco, which will be used by the great conventions and song festivals. Mr. and Mrs. Douglas Crane will present their latest terpsichorean novelty, "Exposition Tango." Mr. Harry Lauder will sing the Exposition ballad. The amusement section of the Exposition, the "Zone," corresponding to the famous "Midway" at the World's Columbian Exposition at Chicago, will carry out the purpose of the Exposition to give every feature a high educational value. continental railways. The Grand Canyon concession is built upon so prodigious a scale that visitors will view the canyons from a standard gauge railway coach running on a standard gauge track. A huge working model of the Panama canal is so extensive that visitors seated in comfortable theater chairs will be carried along the route of the canal upon a movable platform, and a dictaphone at the arm of each chair will describe each scene as it comes into view. A novel amusement feature will be provided by working submarine boats of sixty-five tons displacement, which will operate in an artificial lagoon. The Aerospace, a huge inverted pendulum, operating like a giant seesaw, with a great balancing weight on the short end and a car for passengers at the extremity of its long



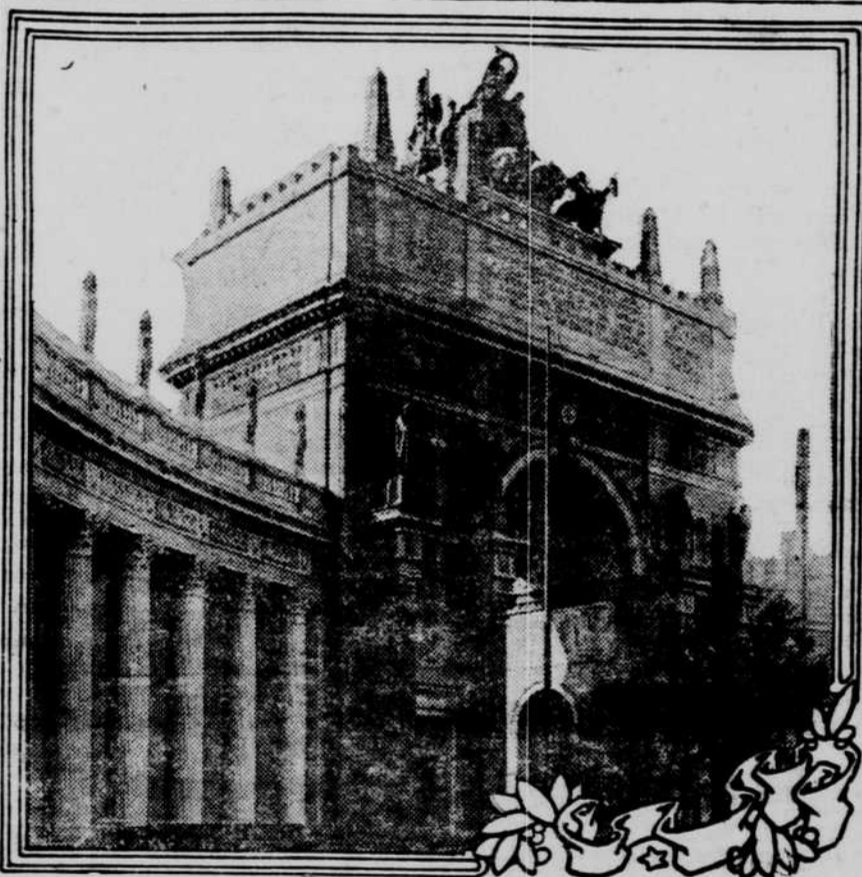
WONDERFUL GLASS DOME OF THE PALACE OF HORTICULTURE, PANAMA-PACIFIC INTERNATIONAL EXPOSITION, SAN FRANCISCO, 1915.

Palace of Horticulture, looking through the Court of Palms. This beautiful structure has a glass dome 185 feet high and 152 feet in diameter. Crowning the dome is a huge basket. The general style of the architecture is the French renaissance, with Saracenic modification. The extreme length of the palace is 672 feet and breadth 320 feet.

entire period of the Exposition, which opens Feb. 20, 1915, a series of great events, including sports and athletic contests of many kinds conducted upon a scale of great magnitude. The Vanderbilt Automobile Cup Race and the Grand Prix, the two supreme events of the automobile year, will be held upon a four mile course, embracing a circuit of the Exposition palaces, a spectacular background far exceeding in beauty and grandeur any which ancient Rome beheld during its historic chariot races. The Vanderbilt Cup Race will take place on Feb. 22 and the Grand Prix on Feb. 27, 1915. Great motorboats of the deep sea cruiser type will race for a \$10,000 prize from New York through the Panama canal to the Golden Gate. A series of international yacht races in the twenty-one meter class will be held in San Francisco bay. President Woodrow Wilson, Emperor William of Germany and King George of England have each offered trophies in these events. Swimming, water polo, fly casting, canoeing, football, baseball and long distance foot racing are included in a series of more than 200 different kinds of contests. President Wilson himself will attend the Exposition, and it is probable the members of congress will attend in an especially chartered steamer.

Imagine, for the purposes of illustration, the interest, action and novelty of ten great cruises like Barnum & Bailey's combined into a single "greatest show on earth" and presented at ten times the cost of the single production and an idea is gained of the originality of this section. A total of more than eleven millions of dollars has been expended in its establishment. The concessions, as these less serious features of the Exposition are known, include a great open air panoramic reproduction of the Yellowstone National park and a similar representation of the Grand Canyon of Arizona, presented by two of the transcon-

er arm, will raise sightseers more than 325 feet above San Francisco bay, affording an unsurpassed view of the Exposition City and the Golden Gate. Apart from the amusements, conventions and congresses, the vast pageants, the superb pavilions of the nations and the magnificent state buildings, the Exposition itself is a sight well worth seeing. The giant exhibit palaces, the loftiest and most imposing exhibition buildings ever constructed, are in their architecture representative of the finest work of a commission of famous American architects, who freely collaborated with distinguished members of this profession abroad.



VAST TRIUMPHANT ARCH AT THE WORLD'S GREATEST EXPOSITION, THE PANAMA-PACIFIC INTERNATIONAL EXPOSITION SAN FRANCISCO, 1915.

Arch of the Setting Sun in the west entrance to the Court of the Universe at the Panama-Pacific International Exposition. Surmounting the arch is a group of statuary representing "The Nations of the West." In the middle figure of a woman, "The Mother of Tomorrow," and by her side are two children, "The Hopes of Tomorrow." Other figures represent an American Indian, a Mexican, an Alaskan and other American types.

Notice For Liquor License. In the Matter of the Application of Julius J. Dilla for a Liquor License: Notice is hereby given that the said Julius J. Dilla did, on the 10th day of February, A. D. 1915, file his petition to the chairman and members of the County Board of Supervisors of Sherman county, State of Nebraska, for a license to sell malt, spirituous and vinous liquors at retail at Schaupps, in the southeast quarter of section twelve (12) township fifteen (15) north range fourteen (14) in the county of Sherman, and State of Nebraska, from the 6th day of March, 1915, to the 6th day of March, 1916. If there be no objection, protest or remonstrance filed on or before March 4, 1915, said license will be granted. Dated this 10th day of February, A. D. 1915. JULIUS J. DILLA. Attest: L. B. Polski, County Clerk. A. W. Boecking, Deputy.

A great many people at the present time are eating rye bread or bread made from whole wheat flour. If you eat this kind of bread you will feel better. The Loup City Mills make pure rye flour also.

On Wearing Goggles. Safety Engineering has this to say about the wearing of goggles by industrial workers: In order to reduce injuries to the eyes of industrial workers, two requirements are of primary importance—to provide the goggle which meets the needs of the operator, and insistence that the goggles be worn at all times when in the danger zone. The fact should not be overlooked that not only must the lenses be best suited to meet the conditions of work, but the goggle must not occasion discomfort. If the goggle causes discomfort to the wearer he is apt to remove it, and many eyes have been injured and lost from this cause. An entirely satisfactory goggle will seldom be removed by the wearer who appreciates that an eye can never be replaced.

"Madame" Fitted Him. The friends of a certain senator say that, although it is admitted that someone used senate stationery to promote a mining scheme, it is very unjust to make any charge of dishonesty against the kindly old man. To illustrate his character, they tell this story: He was one of the funeral party that accompanied the body of a distinguished senator to its burial place. On the return trip he went early to bed. The next morning his round, red face, devoid of hair, gentle of expression and wrinkled, was thrust out of his berth as the Pullman conductor passed by. "Are we on time, captain?" called out the senator in his thin piping voice. "Just on time, madame," said the conductor, as he lifted his hat and passed on.

They Need the Money. It is no disgrace to die poor—but it's a mean trick to play on your relatives.

Silence is Golden. Let a fool hold his tongue and he may pass for a sage.—Publius Syrus.

Men's Suits

\$10.00 Suits now on Sale at \$6.50
\$13.50 and \$15.00 Suits at \$9.95
\$18.00 and \$20.00 Suits at \$14.95

OVERCOATS

\$10.00 Overcoats, on sale at \$6.00
\$13.50 and \$15.00 Overcoats \$9.95
Overcoats up to \$20.00. \$12.95

LADIES COATS AT 50 CENTS ON THE DOLLAR

ALL WINTER GOODS PROPORTIONATELY REDUCED

THE HUB

Victor Viener, Proprietor.

WHEN LOOKING FOR A SQUARE MEAL DROP IN AT THE

Ideal Bakery & Restaurant

SOUTH SIDE OF PUBLIC SQUARE

Meals, Lunches and Short Orders at all Hours

We Also Carry a Full Line of Bakery Goods. Careful Attention Given all Special Orders. Cream Puffs and Boston Brown Bread every Saturday afternoon. Put in your order early.

LOUP CITY FLOUR

Why buy Flour shipped here by outside mills when you can get

Loup City White Satin Flour

for less money, and every sack guaranteed. All dealers handle our flour.

LOUP CITY MILL & LIGHT CO.

O. E. SCHLOTE Auctioneer

Loup City, Nebraska.

All Auctioneering Business Attended to promptly. Satisfaction Guaranteed. Give me a trial.

See my price and make your dates at the First National Bank

California Expositions SEASON OF 1915

Commencing March 1st, a \$50 round trip rate will be made to San Francisco, Los Angeles or San Diego, over direct routes, with \$17.50 additional one way via Portland or Seattle. Approximately these rates from Central and Eastern Nebraska and Kansas.

The Pacific Coast tour is the World's greatest rail journey. These expositions will bring before you the romance, and the modern civilization of California. When you go, make the tour more complete by including the ocean voyage between San Francisco and Portland in the new steamers "Great Northern" or "Northern Pacific."—palaces of the Pacific, with speed of express trains and the proportions of ocean steamers; the 17.50 additional includes berths and meals on these steamers. Our publications will tell you about this grand tour, our through service, the ocean coast voyage, etc., or write either of us.

J. A. DANIELSEN, Agent

L. W. WEEKLY, General Passenger Agent
1004 Farnum Street, Omaha.

WHY

Not join the procession and become a Northwestern reader? Everybody's is doing it.