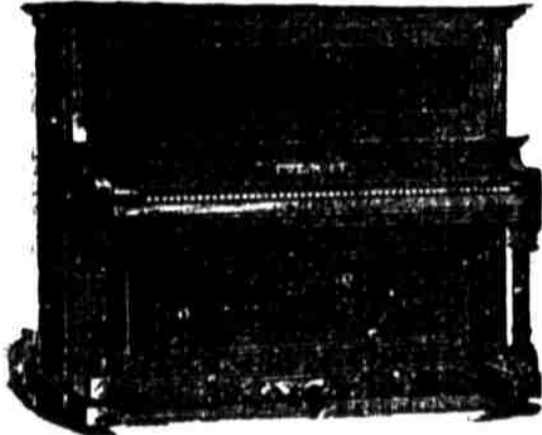


**SCHMOLLER
& MUELLER**

**THE BIG
PIANO HOUSE**

135 SOUTH 11th STREET



OUR LEADERS

Steinway & Sons
Schmoller & Mueller
Steger & Sons
Vose & Sons
Emerson
Mueller
A. B. Chase
Geo. Steck

And 23 others. We sell new
Pianos on \$5 monthly
payments

**Are You Going
-to-
ST. LOUIS
N. E. A.
and the
WORLD'S
FAIR?**

Never before has the N. E. A. arranged its meeting with such wonderful opportunities for the Teacher, Instructor or Professor. The route via the Burlington will be the favorite one, as it has been heretofore.



G. W. Bonnell
City Passenger Agent
Burlington Route

Largest and Best Equipped Eating House in the City. Furnished Rooms in Connection.

Palace Dining Hall.
21 Meals, \$3.00.

W. H. Hart, Prop.

1130 N Street Lincoln, Neb.

University Bulletin

TODAY—Convocation, Rev. Swearingen, "Positive Faith."
TODAY—Session of Board of Regents, U. 162.
APRIL 14—Students' Recital, Memorial Hall.
APRIL 15 & 16—Nebraska Indians vs. Nebraska, the Campus.
APRIL 20 & 21—Omaha League vs. Nebraska, the Campus.
APRIL 22—Girls' Basketball, Minnesota vs. Nebraska, the Armory.
APRIL 22—Company B Hop, Fraternity Hall.
APRIL 22—Baseball Team leaves on Eastern trip.
APRIL 22—Viking Dance, Walsh Hall.
APRIL 23—Annual Engineering Society Banquet, Lindell Hotel.
APRIL 23—Track Meet, Lincoln High vs. Nebraska, F. & M. Park.
APRIL 28—Ladies' Minstrel, Oliver Theatre.
APRIL 28—Graduating Recital, Memorial Hall.
APRIL 29—Interstate Debate, Kansas vs. Nebraska, Memorial Hall.
APRIL 30—Interclass Meet, the Campus.
MAY 3—Recital, Memorial Hall.
MAY 6—Glee Club Concert, Oliver Theatre.
MAY 10—Recital, Memorial Hall.
MAY 11—Convention Nebraska Photographers' Association, Art Hall.
MAY 12—Recital, Memorial Hall.
MAY 19—South Dakota vs. Nebraska, the Campus or F. & M. Park.
MAY 20—Pan-Hel Dance, The Auditorium.
MAY 20—Competitive Drill Day.
MAY 20—Interscholastic Field Day, High School Fete Day, the Campus or F. & M. Park.
MAY 21—Track Meet, Minnesota vs. Nebraska, the Campus or F. & M. Park.
MAY 24—Cadet Encampment Begins.
JUNE 4—Annual Concert, School of Music, Memorial Hall.
JUNE 9—Thirty-third Annual Commencement.

Campus Gleanings.

The annual banquet of the Engineering society will take place on the evening of April 23 at the Lindell hotel.

Chas. E. Reed, ex-'04, has become a member of the Louis C. Kelsy & Co. firm of civil and contracting engineers, Salt Lake City, Utah. Last year Mr. Reed was instructor in civil engineering and took a large part in pushing the work of the Engineering society, of which he was president.

Mr. Fisher of the firm of Fisher & Lowrei of Omaha, visited the mechanical department Monday for the purpose of exhibiting drawings of a system of rolled bearings, which he has worked out. The new bearing is calculated to reduce the tractive force necessary to move heavy loads such as are put upon railroad cars.

W. C. Sturdevant, civil engineering '03, is engaged with the Idaho state engineer as topographer in surveys for the adjudication of water rights in the Snake river valley. His work includes location of canals and laterals, also crop and area of land together with its ownership. He expects in a short time to become assistant water master.

"Nebraska Engineering" is the new title given to this year's edition of the engineering annual. Proof sheets are now coming from the printer, and it will not be long before the board of managers will have it on sale. The new annual is bound in a very artistic cover and besides the various articles upon engineering subjects will contain pictures and a description of the equipment of the engineering department.

Earl J. Woodward, M. D., treats diseases of the eye, ear and throat. Rooms 207-08 Richards block, Phone 666.



Enjoy and appreciate our kind of clothes. If you consider good taste in dress essential to success you should see our "Kensington" Spring Suits. New Browns, Grays and Blues—hand made throughout --with more style than you get in any other make.

Suits \$15.00 to \$30.00

THE "KENSINGTON" . . . they fit.

Magee & Deemer.

R. S. YOUNG BUILDING SUPPLY COMPANY
WHOLESALE AND RETAIL DEALERS IN
COAL, ASH GROVE LIME, KALLOLITE KEENE'S
BEST CEMENT, HARDWALL PLASTER, SAND, WHITE LIME.
Cement, Pressed Brick, Fire Brick, Fire Clay, Stone and
MASONS' SUPPLIES.
Office 1842 O St., Telephone 700. Yards 19th & Q. Telephone 720

Woodwards
HIGH GRADE
CHOCOLATES AND BONBONS
Sold only by Harley Drug Co., 11th and O Street

"Follow the Flag."



**Many Miles Shortest
to St. Louis.**

The only line with its own Station at the main entrance of the World's Fair Grounds. Many special rates during the Exposition. All agents can sell via the Wabash.

HARRY E. MOORES, G. A. P. D., Omaha, Neb.