

BUSINESS DIRECTORY

Every Loyal University Student Is Urged to Patronize these Nebraskan Advertisers, and to Mention the Paper While Doing So.

- ART GOODS—Curtice, Lincoln Book Store.
- BANKS—Columbia, First National.
- BARBER SHOP—Palace, R. & C., Shannon.
- BATHS—Chris' Place.
- BICYCLES, ATHLETIC GOODS—Sam Hall, Sidles, Girard, Lyman.
- BOOKS & STATIONERY—Porter, Co-Op, Brown, University Book Store. Sam Hall, Lincoln Book Store.
- BOOK BINDING—Gillespie.
- CARPENTER—Wilson.
- CIGARS—Powell, Lindsey, Follart.
- CLOTHING—Unland, Magee & Deemer, B. L. Paine, Armstrong.
- COAL—Gregory, Dierks, Whitebreast, P. D. Smith.
- CONFECTIONERY—Leming, Maxwell, Lincoln Candy Kitchen.
- DAIRY—Franklin, Leming.
- DANCING HALL—Fraternity.
- DRUGGIST—Steiner, Woempner, Rector, Brown, Riggs, Wright.
- FLORISTS—Chapin Bros.
- DRY GOODS—Miller & Paine.
- FURNITURE—Rudge & Guenzel, A. M. Davis, Hardy.
- EXPRESS—Lincoln Local, Lincoln
- GROCERS—Keystone, Farmers Grocery, Transfer.
- HARDWARE—Hall, Rudge & Guenzel.
- HOTELS—Lindell, Walton, Boyd.
- INSURANCE—Connecticut Mutual.
- JEWELERS—Tucker, Hallet, Richards.
- LAUNDRIES—Yule Bros.,
- LIVERIES—Melick.
- LUMBER—Dierks.
- NIGHT SCHOOL—Modern Commercial.
- NOVELTIES—Thorpe.
- OIL & GASOLINE—Lincoln Tank Line.
- OPTICIAN—Dr. J. J. Davis.
- PAINT & GLASS—Western Glass & Paint Co.
- PHOTOGRAPHS—Hayden.
- PIANOS—Schmoller & Mueller, Ross Curtice.
- PLUMBING—Korsmeyer.
- POOL & BILLIARDS—Powell.
- PRINTING, Griffin Greer, New Century, Ivy Press, Review Press, George Bros.
- RESTAURANTS—Westerfield, Unique, Don Cameron, Good Health.
- SHOES—Perkins & Sheldon, Sanderson, Anderson.
- SHOE REPAIRING—Blue Front Shop.
- STENOGRAPHER—Shepherd, room 512, Richards bldg.
- SUITORUM—Weber, Burt's.
- TAILORS—Unland, Bumstead.
- THEATRES—Olliver, Lyric.
- TYPEWRITERS—Olliver.

Call at 1134 O St.
OR TELEPHONE 812
For all kinds of
Commercial and Society Printing
Griffin-Greer Printing Co

There is no watch, clock or article of jewelry we cannot fix
C. A. TUCKER
The Up-to-the-Minute Jeweler
PROMPT SERVICE 1123 O Street

BLIND AT CHAPEL.

Students of Nebraska City Institution entertain Students.

A good program was rendered at chapel yesterday morning by the students of the State Institute for the Blind at Nebraska City. Some of those who took part were blind, while others were only partially so, or in such a state as to make their work unprofitable in other schools. Those who saw them in their unfortunate condition could not help but sympathize with them, while they groped around on the stage, placing their fullest confidence in their instructors, and although most of them were deprived of the sense of sight, they fully demonstrated that the other senses were not lacking in keenness.

The young man who played the organ after he had had only four months' practice, did much better than the average person after they have a year's work, and the lady who sang had a well trained musical voice.

This afforded us an opportunity to familiarize ourselves with the work that is being done at another of our state institutions, and we have reason to feel proud of its results along with all others.

The superintendent talked a few minutes and emphasized the fact that the program was not of a charity character, nor was the school, as some people were harboring the erroneous idea. "It is a state institution," he said, "and not an asylum either. It is a fact we came here to furnish a program for one of the charity organizations of the city, but we are not living on charity ourselves. We are supported by the state the same as you are, and the legislature appropriates us money as freely as any of the public institutions. We have school the same as you do. It begins in September and closes in June, and our pupils come and go the same as yours. Our school is different in that it provides for those who are hindered by poor vision to obtain an education."

After the program was finished, Professor Fossler expressed a vote of thanks in behalf of the school for the excellent program given and assured them a hearty appreciation of the entire audience.

Dr. Ross Offers New Course.

Provided that twelve or more qualified persons desire such a course the professor of sociology proposes to mark the centennial of Malthus' great "Essay on Population" by conducting in next fall's semester a post-graduate seminary on "The Dynamics of Population." The session will be on Thursday evening of each week from 7:15 to 9:15 in U. 206. The amount of preparation will probably average four hours a week. The work will consist in co-operative research on the main and reports on special topics, subject and in individual investigations.

The work is intended to lead up to and throw light upon such matters of current discussion as "Race Suicide," "Degeneration," Immigration, the Negro Question, the acclimatization of white races in the tropics, the cityward drift, the new woman, divorce, the higher education of girls, compulsory school attendance, the restriction of child labor, the treatment of criminals, the sterilization of the unfit, militarism, commercialism and socialism.

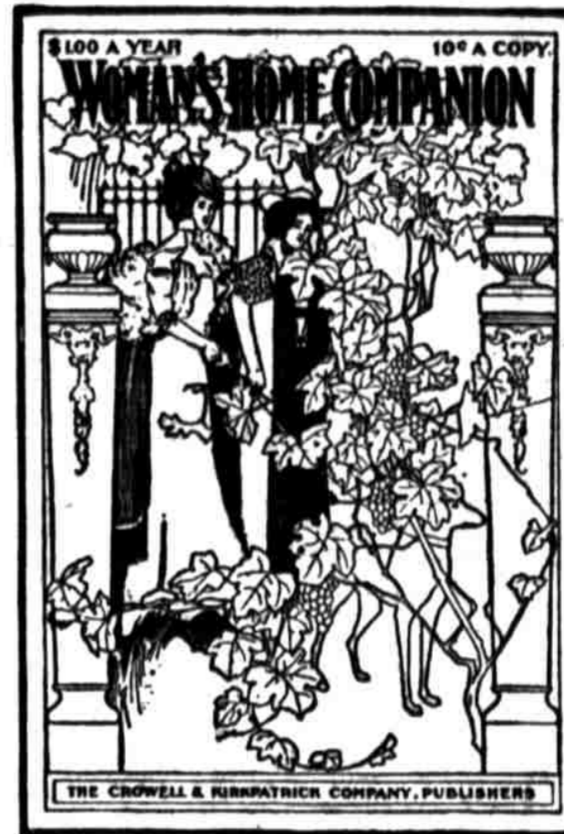
In order that the University may assemble the literature of the subject and in order to announce the seminary in the forthcoming register, it is necessary to know in advance whether sufficient interest exists to warrant the offering of the course. All who would take such a course are therefore requested to give their names to the undersigned before the end of February.
EDWARD A. ROSS,
Prof. of Sociology.

Sam's Cafe. The only place in the city to get the famous "Little Gem Hot Waffles." Special service for ladies.

Go to the Burr barber shop if you want a first class shave, hair-cut or massage. Everything first-class and up-to-date. Shannon and Demmick, proprietors.

Box of cigars given away every day at Powell's Oliver theatre building.

Woman's Home Companion



THE IDEAL HOME MAGAZINE

Is in its twenty-eighth year; is printed on fine paper and profusely illustrated. It gives 40 to 54 pages a month, each page 11 by 16 inches, and a new and beautiful cover in colors every issue. Its editors and contributors are the most popular American writers; in short, it is the ideal family magazine, magnificently illustrated. Its departments are edited by experts and are full of interest. As a home magazine it has no superiors, and few, if any, equals.

600 Pages—1,200 Pictures

EACH PAGE IS EQUAL TO FOUR ORDINARY MAGAZINE PAGES...

Hundreds of thousands consider it a family necessity. It is clean, pure and inspiring. Its contents, while varied, are entertaining and of the highest order. It contains neither sensationalism nor provincialism. This number is constantly increasing.

Monthly, 40 to 54 Pages, Each 11 by 16 Inches.

It already has 340,000 subscribers, and this number is constantly increasing.

A Live Agent Wanted in Every Community. Most Liberal Terms.

Subscription Price \$1.00 a Year. Ten Cents a Copy.

Send Ten Cents for a sample copy and we will send you an elegant engraving, 20 by 25 inches in size, of Landseer's famous painting "Defiance, or Stag at Bay." Mention this offer when you write.

Address **WOMAN'S HOME COMPANION, Springfield, Ohio**

We Carry Only STYLISH SHOES

THE celebrated Hanan, Walk-Over and W. L. Douglas makes for men. Hanan and Sorosis Shoes for women. Swedish Gymnasium Shoe. None genuine unless stamped "Perkins' Swedish."

ROGERS & PERKINS COMPANY

Successors to Webster & Rogers and Perkins and Sheldon Co. 1129 O Street.

GEO. A. WILSON CONTRACTOR AND BUILDER

Office and Shop, 222 S. 12th. Telephone B 1297
Estimates furnished upon application. Job work promptly attended to.
LINCOLN, NEBRASKA

Western Glass & Paint Co.
12th & M. Sts., Lincoln, Neb.

GET YOUR HACK FOR THE JUNIOR PROM FROM...
FORBES STABLE
Office 1131 P Street Phone 550

Selected by the Government

To carry the United States Overland Mail across the continent, on account of its being the best and most direct line



VIA Omaha the Union Pacific is

- 204 miles shorter to Salt Lake City.
- 278 miles shorter to San Francisco.
- 278 miles shorter to Los Angeles.
- 358 miles shorter to Portland.
- 12 hours quicker to Salt Lake City.
- 16 hours quicker to San Francisco.
- 16 hours quicker to Los Angeles.
- 16 hours quicker to Portland.

THAN ANY OTHER LINE

Electric Lighted Trains Daily
E. B. SLOSSEN, General Agent

Steiner-Woempner Drug Co.

Successors to STEINER PHARMACY.
1146 O Street
Phone 707 Lincoln, Neb.
Manufacturers of Steiner's Balsam Rhubarb Cold Capsules, Pile Cure and Gray's Condition Powders.