

**BUSINESS DIRECTORY**

Every Loyal University Student is Urged to Patronize these Nebraskan Advertisers, and to Mention the Paper While Doing So.

- BANKS—Columbia, First National.
- BARBER SHOP—Palace, R. & C., Shannon; Marshall & Richards.
- BATHS—Chris' Place.
- BICYCLES, ATHLETIC GOODS—Sam Hall, Sidles, Girard.
- BOOKS & STATIONERY—Porter, Co-Op, Brown, University Book Store, Sam Hall.
- CARPENTER—Wilson.
- CIGARS—Powell, Lindsey, Clarey, Follart.
- CLOTHING—Unland, Magee & Deemer, B. L. Paine, Armstrong, Toggery.
- COAL—Gregory, Dierks, Whitebreast, P. D. Smith.
- CONFECTIONERY—Leming, Maxwell, Lincoln Candy Kitchen.
- DAIRY—Franklin, Leming.
- DRUGGIST—Steiner, Woempner, Rector, Brown, Riggs, Wright.
- FLORISTS—Chapin Bros.
- DRY GOODS—Miller & Paine.
- GROCERS—Keystone.
- FURNITURE—Rudge & Guenzel, A. M. Davis, Hardy.
- EXPRESS—Lincoln Local, Lincoln Transfer.
- HARDWARE—Hall, Rudge & Guenzel.
- DANCING HALL—Fraternity.
- HOTELS—Lindell, Walton.
- LIVERIES—Melick.
- LUMBER—Dierks.
- NIGHT SCHOOL—Modern Commercial.
- NOVELTIES—Thorpe.
- OIL & GASOLINE—Lincoln Tank Line.
- PAINT & GLASS—Western Glass & Paint Co.
- PLUMBING—Korsmeyer.
- POOL & BILLIARDS—Powell.
- PRINTING, Griffin Greer, New Century, Ivy Press, Review Press.
- RESTAURANTS—Westerfield, Unique, Don Cameron, Good Health.
- SHOES—Perkins & Sheldon, Sanderson, Anderson, Cincinnati Shoe, Cincinnati Shoe Store.
- SHOE REPAIRING—Blue Front Shop.
- MANDOLIN & GUITAR INSTRUCTION—Mrs. Roy M. Rhone, 1332 J.
- SUTORIUM—Weber, Burt's.
- TAILORS—Unland, Bumstead, Ludwig.

Rates \$1.00 and \$1.25 Per Day. Special Rates by the Week.

**BOYD HOTEL**

MRS. KATE MARTIN, PROP. Only one block from B. & M. Depot. Only one block from Post Office. Near all street car lines.

ESTABLISHED 1871  
**E. HALLETT**  
Jeweler and Optician  
EYES EXAMINED FREE  
1143 O St.

**LINDSEY'S CIGAR STORE**

Up-to-Date Soda Fountain and Magazines.  
118 North 11th Street.

**POWELL'S BILLIARD AND POOL HALL** was opened this fall with tables all newly covered, best cues and balls, newly papered, everything up-to-date, including customers.

B. P. POWELL, 146 N 11th St. Phone 1 664

**In Society.**

Mr. Fred Brown of Fremont is to be a new Phi Delta Theta.

Messrs. Ritchie, Myers, Hupp and Fisher are pledged to Phi Delta Phi.

Delta Gamma will give a dancing party at Walsh hall February 16.

John E. Lester was a visitor at the Delta U. house last week.

Dwight Kramer, '07, of Omaha, is pledged to Phi Gamma Delta.

Will Bonkemper of Lincoln is pledged to Delta Upsilon.

Mrs. Margaret Sailor of Omaha, visited at the Kappa house over Sunday.

The Phi Deltas gave a bob sled party Wednesday evening.

Mrs. Mary Whiting Westman is visiting in Lincoln.

Miss Ina Cooper has returned to the University after a week's visit at her home in Humboldt.

Miss Rachel Nicholson entertained the Pi Phi's last night at a "Cooky Shine" at her home.

Delta Delta Delta has issued invitations to a dancing party at Walsh hall Friday, February 12.

Claire Cornell entertained a few classmates Saturday evening at her home.

Miss Georgia Field entertained at luncheon to the active members of Kappa Alpha Theta Saturday.

Miss Laura Houtz entertained the active members of Kappa Kappa Gamma Saturday afternoon at her home.

Saturday evening the house girls of Kappa Kappa Gamma will entertain some of the alumnae at a house party.

Miss Ada Sargent of Council Bluffs, will visit at the Kappa house over Sunday.

St. Luke's Choir club of the Episcopal church, will give a party at Walsh Hall February 11th.

Misses Minnie Gardner of Auburn, Lucy Van Horn of Pawnee City, and Lola Soutwick will be initiated into Kappa Kappa Gamma Thursday evening.

The annual banquet of Kappa Alpha Theta will be held Saturday evening at 6:30 at the Lindell. A play by home talent will follow at the chapter house.

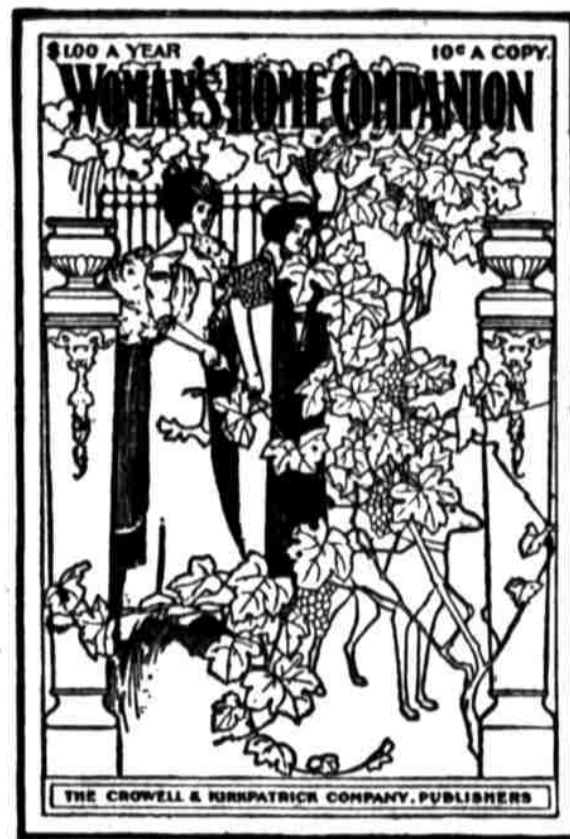
Pi Beta Phi will initiate Thursday evening at the home of Miss Stuart. Misses Mildred and Nita Hazelwood, Margaret McLucas and Pauline Bush are the Pi Phi's to be.

Capt. L. P. Hewitt of Company D, entertained the members of that company Friday evening at the Phi-Delta house. This evening was spent in games, music, and talks by Captains Chase, Barnes and Walton, old Company D officers. The fellows all had a good time and got much better acquainted with each other.

The annual Cadet Officers' Hop was held last Friday evening at Fraternity hall. The affair was quite equal to any of the Officers' Hops previously given. A program of twenty numbers and two extras was danced. Abbot's orchestra furnished music for the occasion. Messrs. Parker, chairman of the committee, and Mohrman, master of ceremonies, had the affair in charge. Some eighty couples attended.

Five hundred dollars are to be spent in decorations alone at the Junior Ball at Minnesota. Of course, with tickets at the usual price no such outlay as this can be made here, yet the price of tickets isn't all that stands in the way. At Minnesota the affair is one of the Junior class, not of one or two individuals. Here the Junior class lends its name and authority temporarily to a few, and too often no fair return is received for the loan.

**Woman's Home Companion**



**THE IDEAL HOME MAGAZINE**

Is in its twenty-eighth year; is printed on fine paper and profusely illustrated. It gives 40 to 54 pages a month, each page 11 by 16 inches, and a new and beautiful cover in colors every issue. Its editors and contributors are the most popular American writers; in short, it is the ideal family magazine, magnificently illustrated. Its departments are edited by experts and are full of interest. As a home magazine it has no superiors, and few, if any, equals.

**600 Pages—1,200 Pictures**

EACH PAGE IS EQUAL TO FOUR ORDINARY MAGAZINE PAGES...

Hundreds of thousands consider it a family necessity. It is clean, pure and inspiring. Its contents, while varied, are entertaining and of the highest order. It contains neither sensationalism nor provincialism. number is constantly increasing.

Monthly, 40 to 54 Pages, Each 11 by 16 Inches.

It already has 340,000 subscribers, and this

**A Live Agent Wanted in Every Community. Most Liberal Terms.**

**Subscription Price \$1.00 a Year. Ten Cents a Copy.**

**Send Ten Cents** for a sample copy and we will send you an elegant engraving, 20 by 25 inches in size, of Landseer's famous painting "Defiance, or Stag at Bay." Mention this offer when you write.

Address **WOMAN'S HOME COMPANION, Springfield, Ohio**

The wedding of Ferd Rehlander to Miss Elsie Tremblett occurred last week in Jacksonville, Ill. Mr. Rehlander is a member of Beta Theta Pi and was prominent in University social circles while in school.

Some seventy-five young ladies, members of the various sororities, gave a unique party at the armory Saturday evening. The men were conspicuous by their absence, the only representative of the masculine persuasion being the one who presided at the piano. Half of the girls came dressed to take the part of the men, in coats, vests, lofty collars and ties. A few were costumed in stunning French officer style. Despite the absence of real men a very delightful evening was spent in dancing. The hall was tastefully decorated and ice served during the evening.

Lincoln Local Express, 11th and N. Tel. 787. Baggage hauled.

Board \$2.50 per week at the Good Health Cafe.

Lincoln Transfer Co. Baggage. Phone, 176.

The R. & C. Barber Shop. Eight chairs. Two doors east of Lyric theatre.



**The Photographer**

1029 O STREET FOR FINE PHOTOS

**GEO. A. WILSON CONTRACTOR AND BUILDER**

Office and Shop, 222 S. 12th. Telephone B 1307

Estimates furnished upon application. Job work promptly attended to.

LINCOLN, NEBRASKA

**Western Glass & Paint Co.**

12th & M. Sts., Lincoln, Neb.

**Selected by the Government**

To carry the United States Overland Mail across the continent, on account of its being the best and most direct line



**VIA Omaha the Union Pacific is**

- 204 miles shorter to Salt Lake City.
- 278 miles shorter to San Francisco.
- 278 miles shorter to Los Angeles.
- 358 miles shorter to Portland.
- 12 hours quicker to Salt Lake City.
- 16 hours quicker to San Francisco.
- 16 hours quicker to Los Angeles.
- 16 hours quicker to Portland.

**THAN ANY OTHER LINE**

Electric Lighted Trains Daily

E. B. SLOSSEN, General Agent

**Steiner-Woempner Drug Co.**

Successors to STEINER PHARMACY.

1146 O Street

Phone 707 Lincoln, Neb.

Manufacturers of Steiner's Balsam, Rhubarb Cold Capsules, Pile Cure and Gray's Condition Powders.